

Anti-Melanoma gp100 antibody [EP4863(2)] ab137078

リコンビナント **RabMAb**

★★★★★ [14 Abreviews](#) [44 References](#) [画像数 7](#)

製品の概要

製品名	Anti-Melanoma gp100 antibody [EP4863(2)]
製品の詳細	Rabbit monoclonal [EP4863(2)] to Melanoma gp100
由来種	Rabbit
特異性	The mouse recommendation is based on the WB results. We do not guarantee IHC-P for mouse.
アプリケーション	適用あり: WB, IHC-P, IP, Flow Cyt (Intra), IA, ICC/IF
種交差性	交差種: Mouse, Human
免疫原	Synthetic peptide within Human Melanoma gp100 aa 1-100. The exact sequence is proprietary. Database link: P40967
ポジティブ・コントロール	WB: B16-F0 (Mouse melanoma epithelial cell-like) whole cell lysate and Human melanoma lysate. IHC: Human melanoma tissue. ICC/IF: B16-F0 (Mouse melanoma epithelial cell-like) cell line. Flow Cyt (intra): B16-F0 (Mouse melanoma epithelial cell-like) cell line. IP: B16-F0 (Mouse melanoma epithelial cell-like) whole cell lysate.
特記事項	Our RabMAb [®] technology is a patented hybridoma-based technology for making rabbit monoclonal antibodies. For details on our patents, please refer to RabMAb[®] patents . Rat: We have preliminary internal testing data to indicate this antibody may not react with this species. Please contact us for more information.

製品の特性

製品の状態	Liquid
保存方法	Shipped at 4°C. Store at +4°C short term (1-2 weeks). Upon delivery aliquot. Store at -20°C. Avoid freeze / thaw cycle.
バッファー	Preservative: 0.01% Sodium azide Constituents: 40% Glycerol, 0.05% BSA, 59% PBS
精製度	Protein A purified
ポリ/モノ	モノクローナル
クローン名	EP4863(2)
アイソタイプ	IgG

アプリケーション

The Abpromise guarantee **Abpromise保証は、次のテスト済みアプリケーションにおけるab137078の使用に適用されます**
アプリケーションノートには、推奨の開始希釈率がありますが、適切な希釈率につきましてはご検討ください。

アプリケーション	Abreviews	特記事項
WB	★★★★★ (1)	1/1000 - 1/10000. Predicted molecular weight: 70 kDa.
IHC-P	★★★★★ (5)	1/100 - 1/500. Perform heat mediated antigen retrieval with citrate buffer pH 6 before commencing with IHC staining protocol. The mouse recommendation is based on the WB results. We do not guarantee IHC-P for mouse.
IP		1/30.
Flow Cyt (Intra)		1/40. ab172730 - Rabbit monoclonal IgG, is suitable for use as an isotype control with this antibody.
IA		1/50.
ICC/IF	★★★★★ (2)	1/50.

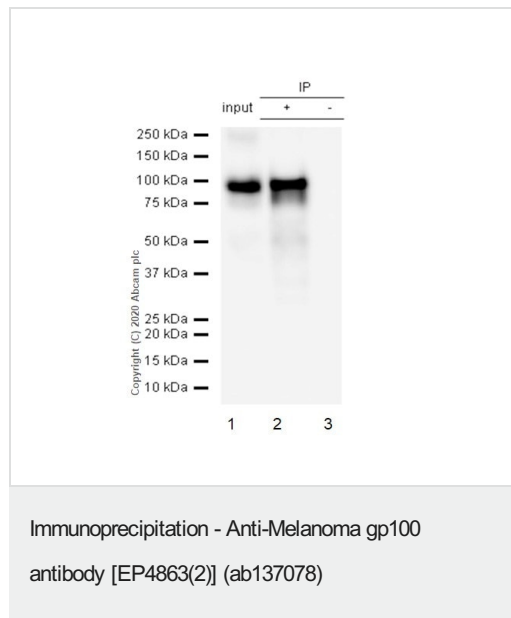
ターゲット情報

機能	Plays a central role in the biogenesis of melanosomes. Involved in the maturation of melanosomes from stage I to II. The transition from stage I melanosomes to stage II melanosomes involves an elongation of the vesicle, and the appearance within of distinct fibrillar structures. Release of the soluble form, ME20-S, could protect tumor cells from antibody mediated immunity.
組織特異性	Preferentially expressed in melanomas. Some expression was found in dysplastic nevi. Not found in normal tissues nor in carcinomas. Normally expressed at low levels in quiescent adult melanocytes but overexpressed by proliferating neonatal melanocytes and during tumor growth.
配列類似性	Belongs to the PMEL/NMB family. Contains 1 PKD domain.
ドメイン	The RPT domain is essential for the generation of the fibrillar matrix of melanosomes. The luminal domain is necessary for correct processing and trafficking to melanosomes.
翻訳後修飾	A small amount of P1/P100 (major form) undergoes glycosylation to yield P2/P120 (minor form). P2 is cleaved by a furin-like proprotein convertase (PC) in a pH-dependent manner in a post-Golgi, prelysosomal compartment into two disulfide-linked subunits: a large luminal subunit, M-alpha/ME20-S, and an integral membrane subunit, M-beta. Despite cleavage, only a small fraction of M-alpha is secreted, whereas most M-alpha and M-beta remain associated with each other intracellularly. M-alpha is further processed to M-alpha N and M-alpha C. M-alpha C further undergoes processing to yield M-alpha C1 and M-alpha C3 (M-alpha C2 in the case of PMEL17-is or PMEL17-ls). Formation of intraluminal fibrils in the melanosomes requires the formation of M-alpha that becomes incorporated into the fibrils. Stage II melanosomes harbor only Golgi-modified Pmel17 fragments that are derived from M-alpha and that bear sialylated O-linked oligosaccharides. N-glycosylated. O-glycosylated; contains sialic acid.

細胞内局在

Secreted and Endoplasmic reticulum membrane. Golgi apparatus. Melanosome. Endosome > multivesicular body. Identified by mass spectrometry in melanosome fractions from stage I to stage IV. Localizes predominantly to intraluminal vesicles (ILVs) within multivesicular bodies. Associates with ILVs found within the lumen of premelanosomes and melanosomes and particularly in compartments that serve as precursors to the striated stage II premelanosomes.

画像



ab137078 immunoprecipitating Melanoma gp100. 10µg of cell lysate was incubated with primary antibody at a dilution of 1/500 and VeriBlot for IP Detection Reagent (HRP) ([ab131366](#)) at a dilution of 1/10000.

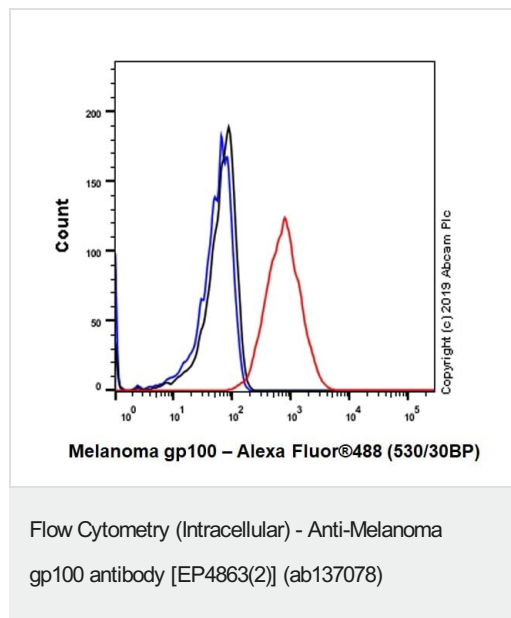
Lane 1: B16-F0 (mouse melanoma epithelial cell-like) whole cell lysate 10ug

Lane 2: B16-F0 (mouse melanoma epithelial cell-like) whole cell lysate

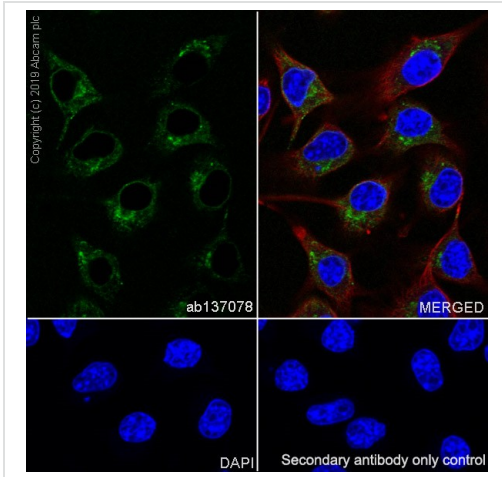
Lane 3: Rabbit monoclonal IgG ([ab172730](#)) instead of ab137078 in B16-F0 whole cell lysate

Exposure time: 1 second

Observed MW: 85-100 KDa

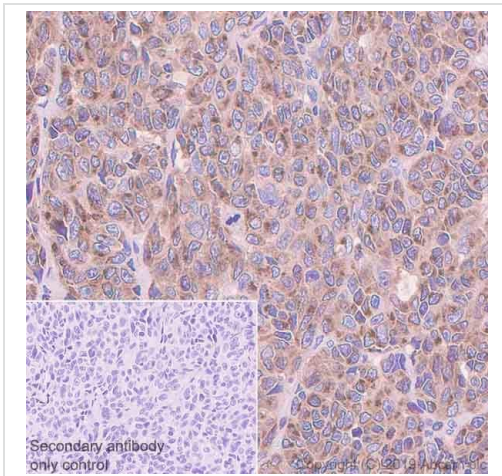


Overlay histogram showing B16-F0 (Mouse skin melanoma cell) cells stained with ab137078 (red line). The cells were fixed with 4% paraformaldehyde and then permeabilized with 90% methanol. The cells were then incubated with ab137078 at 1/40 dilution. The secondary antibody used was Goat anti rabbit IgG (Alexa Fluor® 488, [ab150077](#)) at 1/2000 dilution. Isotype control antibody (black line) was Rabbit monoclonal IgG ([ab172730](#)). Unlabelled control (blue line) was cells without incubation with primary antibody and secondary antibody.



Immunocytochemistry/ Immunofluorescence - Anti-Melanoma gp100 antibody [EP4863(2)] (ab137078)

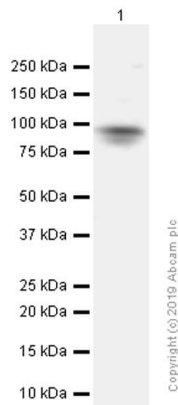
ab137078 staining Melanoma gp100 in B16-F0 (mouse skin) cells by ICC (Immunocytochemistry). Cells were fixed with 4% Paraformaldehyde and permeabilized with 0.1% Triton X-100. Samples were incubated with primary antibody at a dilution of 1/50. A goat anti rabbit IgG (Alexa Fluor® 488) (**ab150077**) was used as the secondary antibody at a dilution of 1/1000. Anti-alpha Tubulin antibody [DM1A] - Microtubule Marker (Alexa Fluor® 594) **ab195889** was used as a counterstain at a dilution of 1/200. DAPI was used as a nuclear counterstain.



Immunohistochemistry (Formalin/PFA-fixed paraffin-embedded sections) - Anti-Melanoma gp100 antibody [EP4863(2)] (ab137078)

ab137078 staining Melanoma gp100 in human melanoma tissue sections by Immunohistochemistry (IHC-P - paraformaldehyde-fixed, paraffin-embedded sections). Tissue was fixed with paraformaldehyde and antigen retrieval was by heat mediation in a EDTA buffer. Samples were incubated with primary antibody at a dilution of 1/250 for 30 minutes at room temperature. Rabbit specific IHC polymer detection kit HRP/DAB (**ab209101**) was used as the secondary antibody.

The immunostaining staining was performed on a Leica Biosystems BOND® RX instrument.



Western blot - Anti-Melanoma gp100 antibody [EP4863(2)] (ab137078)

Anti-Melanoma gp100 antibody [EP4863(2)] (ab137078) at 1/1000 dilution + Human melanoma lysate 15µg

Secondary

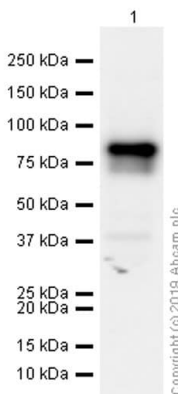
Goat Anti-Rabbit IgG (HRP) with minimal cross-reactivity with human IgG at 1/2000 dilution

Predicted band size: 70 kDa

Exposure time: 18-0 seconds

Observed MW: 85-100 KDa

The molecular weights observed are consistent with what have been described in PMID: 16492709 and PMID: 7961886



Western blot - Anti-Melanoma gp100 antibody [EP4863(2)] (ab137078)

Anti-Melanoma gp100 antibody [EP4863(2)] (ab137078) at 1/10000 dilution + B16-F0 (Mouse melanoma epithelial cell-like) whole cell lysate at 15 µg

Secondary

Goat Anti-Rabbit IgG H&L (HRP) ([ab97051](#)) at 1/20000 dilution

Predicted band size: 70 kDa

Exposure time: 50 seconds

Observed MW: 85-100 KDa

The molecular weights observed are consistent with what have been described in PMID: 16492709 and PMID: 7961886

Why choose a recombinant antibody?



Research with confidence
Consistent and reproducible results



Long-term and scalable supply
Recombinant technology



Success from the first experiment
Confirmed specificity



Ethical standards compliant
Animal-free production

Anti-Melanoma gp100 antibody [EP4863(2)]
(ab137078)

Please note: All products are "FOR RESEARCH USE ONLY. NOT FOR USE IN DIAGNOSTIC PROCEDURES"

Our Abpromise to you: Quality guaranteed and expert technical support

- Replacement or refund for products not performing as stated on the datasheet
- Valid for 12 months from date of delivery
- Response to your inquiry within 24 hours
- We provide support in Chinese, English, French, German, Japanese and Spanish
- Extensive multi-media technical resources to help you
- We investigate all quality concerns to ensure our products perform to the highest standards

If the product does not perform as described on this datasheet, we will offer a refund or replacement. For full details of the Abpromise, please visit <https://www.abcam.co.jp/abpromise> or contact our technical team.

Terms and conditions

- Guarantee only valid for products bought direct from Abcam or one of our authorized distributors