


Anti-Melanoma antibody [HMB45 + M2-7C10 + M2-9E3] ab732

リコンビナント

★★★★★ **2 Abreviews** **25 References** 画像数 1

製品の概要

製品名	Anti-Melanoma antibody [HMB45 + M2-7C10 + M2-9E3]
製品の詳細	Mouse recombinant multiclonal [HMB45 + M2-7C10 + M2-9E3] to Melanoma
由来種	Mouse
アプリケーション	適用あり: IHC-Fr, IHC-P, Flow Cyt
種交差性	交差種: Human 交差が予測される動物種: Rat 
免疫原	Recombinant full length protein corresponding to Melanoma. HMB45 - Pigmented melanoma metastases from LN MART-1 - Recombinant human MART-1 protein
エピトープ	HMB45 and MART-1
ポジティブ・コントロール	IHC-P: Metastatic melanoma in lymph node.
特記事項	<p>This cocktail is HMB45 + two different clones of MART-1[M2-7C10] + [M2-9E3]. HMB34 isotype: IgG1/kappa and both clones of MART-1: IgG2b + IgG2b</p> <p>HMB-45 and MART-1 are coexpressed in the majority of melanomas, as well as uniquely expressed in certain cases. Thus, the HMB-45 and MART-1 cocktail is potentially more sensitive than HMB-45 or MART-1 alone. MART-1 is a cocktail of clones M2-7C10 and M2-9E3. The combination of HMB-45 and the MART-1 cocktail make this triple antibody cocktail a first-order pan melanoma screener.</p> <p>This product was changed from ascites to tissue culture supernatant on 14/07/17. The following lots are from ascites and are still in stock as of 14/07/17 – GR313023 and GR3175007. Lot numbers higher than GR313023 will be from tissue culture supernatant. Please note that the dilutions may need to be adjusted accordingly.</p> <p>The Life Science industry has been in the grips of a reproducibility crisis for a number of years. Abcam is leading the way in addressing this with our range of recombinant monoclonal antibodies and knockout edited cell lines for gold-standard validation. Please check that this product meets your needs before purchasing.</p> <p>If you have any questions, special requirements or concerns, please send us an inquiry and/or contact our Support team ahead of purchase. Recommended alternatives for this product can be found below, along with publications, customer reviews and Q&As</p> <p>Please note that this antibody is an oligoclonal antibody. It is a cocktail of monoclonal antibodies that have been carefully selected. Oligoclonal antibodies have not only the specificity and batch-</p>

to-batch consistency of a monoclonal antibody, but also have the advantage of the sensitivity of a polyclonal antibody due to their ability to recognize multiple epitopes on an antigen.

製品の特長

製品の状態	Liquid
保存方法	Shipped at 4°C. Store at +4°C short term (1-2 weeks). Store at -20°C or -80°C. Avoid freeze / thaw cycle.
バッファー	Preservative: 0.09% Sodium azide Constituents: 97.5% Water, 0.99% BSA, 0.33% Tris HCl, 0.007% Hydrochloric acid, 0.04% Tween
精製度	Tissue culture supernatant
一次抗体 備考	HMB-45 and MART-1 are coexpressed in the majority of melanomas, as well as uniquely expressed in certain cases. Thus, the HMB-45 and MART-1 cocktail is potentially more sensitive than HMB-45 or MART-1 alone. MART-1 is a cocktail of clones DT101 and BC199. The combination of HMB-45 and the MART-1 cocktail make this triple antibody cocktail a first-order pan melanoma screener.
ポリ/モノ	Recombinant Multiclonal
クローン名	HMB45 + M2-7C10 + M2-9E3
ミエローマ	unknown
アイソタイプ	IgG2b
軽鎖の種類	kappa

アプリケーション

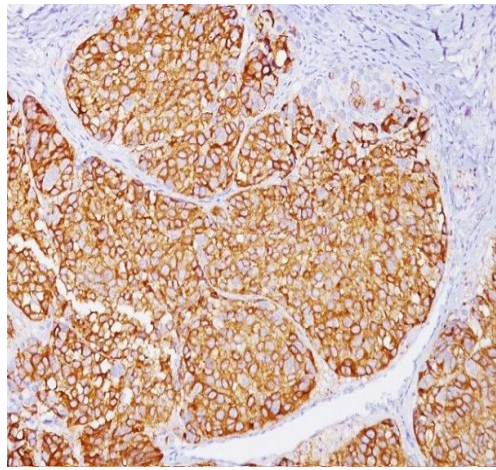
The Abpromise guarantee Abpromise保証は、次のテスト済みアプリケーションにおけるab732の使用に適用されます
アプリケーションノートには、推奨の開始希釈率がありますが、適切な希釈率につきましてはご確認ください。

アプリケーション	Abreviews	特記事項
IHC-Fr		Use at an assay dependent concentration.
IHC-P	★★★★★ (1)	1/100 - 1/200. The staining intensity of this melanoma cocktail is enhanced by performing heat mediated antigen retrieval using a high pH buffer. The HMB-45 portion of this antibody will stain with citrate buffer, pH 6.0; however, data shows the MART-1 portion of this cocktail may be negative unless a high pH buffer is used. We therefore, strongly recommend that you do not use citrate buffer for this
Flow Cyt		Use at an assay dependent concentration. PubMed: 22147606 ab170192 - Mouse monoclonal IgG2b, is suitable for use as an isotype control with this antibody.

ターゲット情報

関連性	Malignant melanoma is a malignant neoplasm of melanocytes, arising de novo or from a pre existing benign nevus, which occurs most often in the skin but also may involve other sites.
細胞内局在	Membrane; Single-pass membrane protein

画像



ab732 staining Melanoma in Human lymph node tissue sections by Immunohistochemistry (IHC-P - paraformaldehyde-fixed, paraffin-embedded sections).

Immunohistochemistry (Formalin/PFA-fixed paraffin-embedded sections) - Anti-Melanoma antibody
[HMB45 + M2-7C10 + M2-9E3] (ab732)

Please note: All products are "FOR RESEARCH USE ONLY. NOT FOR USE IN DIAGNOSTIC PROCEDURES"

Our Abpromise to you: Quality guaranteed and expert technical support

- Replacement or refund for products not performing as stated on the datasheet
- Valid for 12 months from date of delivery
- Response to your inquiry within 24 hours
- We provide support in Chinese, English, French, German, Japanese and Spanish
- Extensive multi-media technical resources to help you
- We investigate all quality concerns to ensure our products perform to the highest standards

If the product does not perform as described on this datasheet, we will offer a refund or replacement. For full details of the Abpromise, please visit <https://www.abcam.co.jp/abpromise> or contact our technical team.

Terms and conditions

- Guarantee only valid for products bought direct from Abcam or one of our authorized distributors