

Anti-MEK4/MKK4 antibody [EP615Y] ab33912

KO 評価済 リコンビナント RabMAb

★★★★☆ 1 Abreviews 8 References 画像数 3

製品の概要

製品名	Anti-MEK4/MKK4 antibody [EP615Y]
製品の詳細	Rabbit monoclonal [EP615Y] to MEK4/MKK4
由来種	Rabbit
アプリケーション	適用あり: WB 適用なし: ICC/IF
種交差性	交差種: Mouse, Rat, Human
免疫原	Synthetic peptide within Human MEK4/MKK4 (C terminal). The exact sequence is proprietary. Database link: P45985
ポジティブ・コントロール	WB: NIH/3T3 and HeLa whole cell lysates. Rat brain tissue lysate.
特記事項	This product is a recombinant monoclonal antibody, which offers several advantages including: <ul style="list-style-type: none"> - High batch-to-batch consistency and reproducibility - Improved sensitivity and specificity - Long-term security of supply - Animal-free production For more information see here . Our RabMAb [®] technology is a patented hybridoma-based technology for making rabbit monoclonal antibodies. For details on our patents, please refer to RabMAb[®] patents .

製品の特性

製品の状態	Liquid
保存方法	Shipped at 4°C. Store at +4°C short term (1-2 weeks). Upon delivery aliquot. Store at -20°C long term. Avoid freeze / thaw cycle.
バッファー	pH: 7.20 Preservative: 0.01% Sodium azide Constituents: 59% PBS, 40% Glycerol (glycerin, glycerine), 0.05% BSA
精製度	Protein A purified
特記事項(精製)	ab33912 is a purified IgG.
ポリ/モノ	モノクローナル

クローン名 EP615Y
アイソタイプ IgG

アプリケーション

The Abpromise guarantee Abpromise保証は、次のテスト済みアプリケーションにおけるab33912の使用に適用されます
アプリケーションノートには、推奨の開始希釈率がありますが、適切な希釈率につきましてはご検討ください。

アプリケーション	Abreviews	特記事項
WB	★★★★☆ (1)	1/1000. Predicted molecular weight: 44 kDa.

追加情報 Is unsuitable for ICC/IF.

ターゲット情報

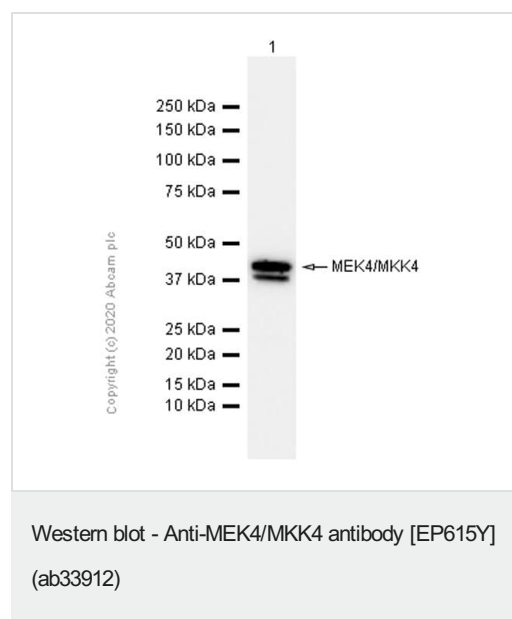
機能 Dual specificity kinase that activates the JUN kinases MAPK8 (JNK1) and MAPK9 (JNK2) as well as MAPK14 (p38) but not MAPK1 (ERK2) or MAPK3 (ERK1).

組織特異性 Abundant expression is seen in the skeletal muscle. It is also widely expressed in other tissues.

配列類似性 Belongs to the protein kinase superfamily. STE Ser/Thr protein kinase family. MAP kinase kinase subfamily.
Contains 1 protein kinase domain.

翻訳後修飾 Activated by phosphorylation on Ser/Thr by MAP kinase kinase kinases.

画像



Anti-MEK4/MKK4 antibody [EP615Y] (ab33912) at 1/1000 dilution
(Purified) + Rat brain lysate at 15 µg

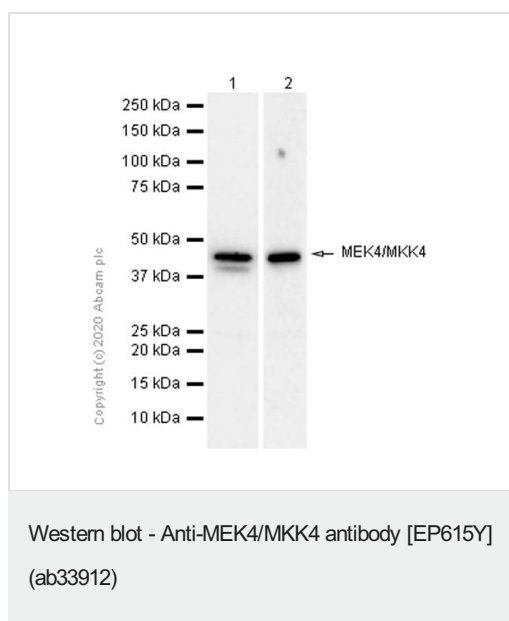
Secondary

Goat Anti-Rabbit IgG H&L (HRP) ([ab97051](#)) at 1/20000 dilution

Predicted band size: 44 kDa

Observed band size: 44 kDa

Blocking buffer: 5% NFDM/TBST



All lanes : Anti-MEK4/MKK4 antibody [EP615Y] (ab33912) at 1/4000 dilution (Purified)

Lane 1 : NIH/3T3 (Mouse embryonic fibroblast) whole cell lysate

Lane 2 : HeLa (Human cervix adenocarcinoma epithelial cell) whole cell lysate

Lysates/proteins at 15 µg per lane.

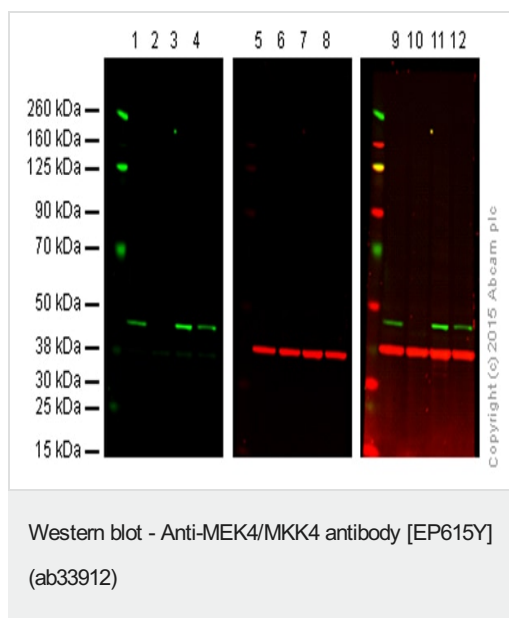
Secondary

All lanes : Goat Anti-Rabbit IgG H&L (HRP) ([ab97051](#)) at 1/20000 dilution

Predicted band size: 44 kDa

Observed band size: 44 kDa

Blocking buffer: 5% NFDM/TBST



Lanes 1, 5 and 9: Wild-type HAP1 cell lysate (20 µg)

Lanes 2, 6 and 10: MEK4 knockout HAP1 cell lysate (20 µg)

Lanes 3, 7 and 11: HeLa cell lysate (20 µg)

Lanes 4, 8 and 12: A431 cell lysate (20 µg)

Lanes 1, 2, 3 and 4: Green signal from target - ab33912 observed at 44 kDa

Lanes 5, 6, 7 and 8: Red signal from loading control - [ab8245](#) observed at 37 kDa

Lanes 9, 10, 11 and 12: Merged (red and green) signal

ab33912 was shown to specifically react with MEK4 when MEK4 knockout samples were used. Wild-type and MEK4 knockout samples were subjected to SDS-PAGE. ab33912 and [ab8245](#) (loading control to GAPDH) were diluted 1/1000 and 1/2000 respectively and incubated overnight at 4°C. Blots were developed with Goat anti-Rabbit IgG H&L (IRDye® 800CW) preadsorbed ([ab216773](#)) and Goat anti-Mouse IgG H&L (IRDye® 680RD) preadsorbed ([ab216776](#)) secondary antibodies at 1/10 000 dilution for 1 h at room temperature before imaging.

Our Abpromise to you: Quality guaranteed and expert technical support

- Replacement or refund for products not performing as stated on the datasheet
- Valid for 12 months from date of delivery
- Response to your inquiry within 24 hours

- We provide support in Chinese, English, French, German, Japanese and Spanish
- Extensive multi-media technical resources to help you
- We investigate all quality concerns to ensure our products perform to the highest standards

If the product does not perform as described on this datasheet, we will offer a refund or replacement. For full details of the Abpromise, please visit <https://www.abcam.co.jp/abpromise> or contact our technical team.

Terms and conditions

- Guarantee only valid for products bought direct from Abcam or one of our authorized distributors