

Anti-MEK2 (phospho T394) antibody ab30622

★★★★★ [2 Abreviews](#) [8 References](#) [画像数 4](#)

製品の概要

製品名	Anti-MEK2 (phospho T394) antibody
製品の詳細	Rabbit polyclonal to MEK2 (phospho T394)
由来種	Rabbit
アプリケーション	適用あり: WB, IHC-P, ICC/IF
種交差性	交差種: Human
免疫原	Synthetic peptide corresponding to Human MEK2 (phospho T394).
特記事項	<p>The Life Science industry has been in the grips of a reproducibility crisis for a number of years. Abcam is leading the way in addressing this with our range of recombinant monoclonal antibodies and knockout edited cell lines for gold-standard validation. Please check that this product meets your needs before purchasing.</p> <p>If you have any questions, special requirements or concerns, please send us an inquiry and/or contact our Support team ahead of purchase. Recommended alternatives for this product can be found below, along with publications, customer reviews and Q&As</p>

製品の特性

製品の状態	Liquid
保存方法	Shipped at 4°C. Upon delivery aliquot and store at -20°C. Avoid freeze / thaw cycles.
バッファー	<p>pH: 7.40</p> <p>Preservative: 0.02% Sodium azide</p> <p>Constituents: PBS, 50% Glycerol (glycerin, glycerine), 0.87% Sodium chloride</p>
精製度	Without Mg ²⁺ and Ca ²⁺
特記事項 (精製)	Immunogen affinity purified
	The antibody against non phosphopeptide was removed by chromatography using non phosphopeptide corresponding to the phosphorylation site.
ポリ/モノ	ポリクローナル
アイソタイプ	IgG

アプリケーション

The Abpromise guarantee

Abpromise保証は、次のテスト済みアプリケーションにおけるab30622の使用に適用されます

アプリケーションノートには、推奨の開始希釈率がありますが、適切な希釈率につきましてはご検討ください。

アプリケーション	Abreviews	特記事項
WB	★★★★★ (2)	1/500 - 1/1000. Predicted molecular weight: 44 kDa.
IHC-P		Use at an assay dependent concentration.
ICC/IF		Use a concentration of 1 - 5 µg/ml.

ターゲット情報

機能

Catalyzes the concomitant phosphorylation of a threonine and a tyrosine residue in a Thr-Glu-Tyr sequence located in MAP kinases. Activates the ERK1 and ERK2 MAP kinases.

関連疾患

Defects in MAP2K2 are a cause of cardiofaciocutaneous syndrome (CFC syndrome) [MIM:115150]; also known as cardio-facio-cutaneous syndrome. CFC syndrome is characterized by a distinctive facial appearance, heart defects and mental retardation. Heart defects include pulmonic stenosis, atrial septal defects and hypertrophic cardiomyopathy. Some affected individuals present with ectodermal abnormalities such as sparse, friable hair, hyperkeratotic skin lesions and a generalized ichthyosis-like condition. Typical facial features are similar to Noonan syndrome. They include high forehead with bitemporal constriction, hypoplastic supraorbital ridges, downslanting palpebral fissures, a depressed nasal bridge, and posteriorly angulated ears with prominent helices. The inheritance of CFC syndrome is autosomal dominant.

配列類似性

Belongs to the protein kinase superfamily. STE Ser/Thr protein kinase family. MAP kinase kinase subfamily.

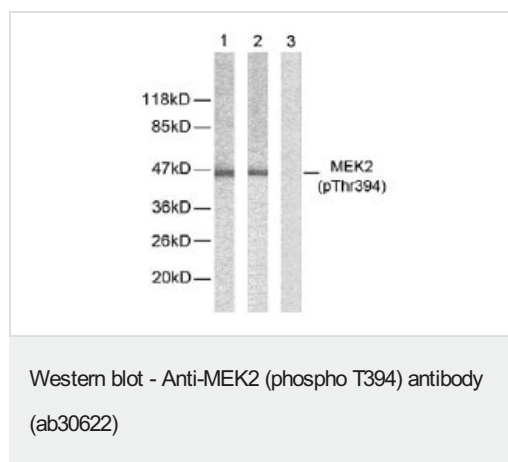
Contains 1 protein kinase domain.

翻訳後修飾

MAPKK is itself dependent on Ser/Thr phosphorylation for activity catalyzed by MAP kinase kinase kinases (RAF or MEKK1).

Acetylation of Ser-222 and Ser-226 by Yersinia yopJ prevents phosphorylation and activation, thus blocking the MAPK signaling pathway.

画像



All lanes : Anti-MEK2 (phospho T394) antibody (ab30622) at 1/500 dilution

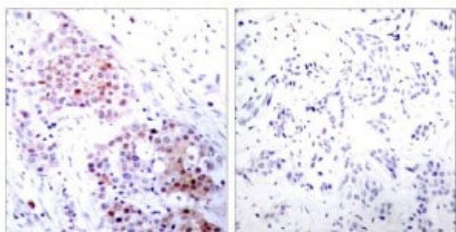
Lane 1 : extracts from ovary cancer cells.

Lane 2 : extracts from ovary cancer cells, preincubated with synthesized non phosphopeptide

Lane 3 : extracts from ovary cancer cells, preincubated with synthesized phosphopeptide (negative control).

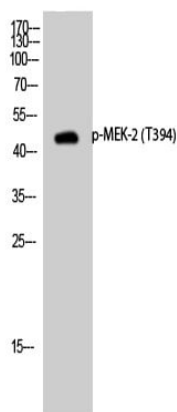
Predicted band size: 44 kDa

Observed band size: 46 kDa



Immunohistochemistry (Formalin/PFA-fixed paraffin-embedded sections) - Anti-MEK2 (phospho T394) antibody (ab30622)

Immunohistochemical analysis of paraffin embedded human breast carcinoma tissue sections, using 1/50 MEK2 (Phospho Thr394) Antibody (ab30622). Left: untreated sample; Right: sample preincubated with synthesized phosphopeptide (negative control).



Western blot - Anti-MEK2 (phospho T394) antibody (ab30622)

Anti-MEK2 (phospho T394) antibody (ab30622) at 1/2000 dilution + VEC cell lysates

Predicted band size: 44 kDa

Immunocytochemistry/ Immunofluorescence - Anti-MEK2 (phospho T394) antibody (ab30622)

ICC/IF image of ab30622 stained MCF7 cells. The cells were 100% methanol fixed (5 min) and then incubated in 1%BSA / 10% normal goat serum / 0.3M glycine in 0.1% PBS-Tween for 1h to permeabilise the cells and block non-specific protein-protein interactions. The cells were then incubated with the antibody (ab30622, 1µg/ml) overnight at +4°C. The secondary antibody (green) was Alexa Fluor® 488 goat anti-rabbit IgG (H+L) used at a 1/1000 dilution for 1h. Alexa Fluor® 594 WGA was used to label plasma membranes (red) at a 1/200 dilution for 1h. DAPI was used to stain the cell nuclei (blue) at a concentration of 1.43µM.

Please note: All products are "FOR RESEARCH USE ONLY. NOT FOR USE IN DIAGNOSTIC PROCEDURES"

Our Abpromise to you: Quality guaranteed and expert technical support

- Replacement or refund for products not performing as stated on the datasheet

- Valid for 12 months from date of delivery
- Response to your inquiry within 24 hours
- We provide support in Chinese, English, French, German, Japanese and Spanish
- Extensive multi-media technical resources to help you
- We investigate all quality concerns to ensure our products perform to the highest standards

If the product does not perform as described on this datasheet, we will offer a refund or replacement. For full details of the Abpromise, please visit <https://www.abcam.co.jp/abpromise> or contact our technical team.

Terms and conditions

- Guarantee only valid for products bought direct from Abcam or one of our authorized distributors