

Anti-MEK1 (phospho S298) antibody [EPR3338] - BSA and Azide free ab214445

リコンビナント **RabMAb**

2 References [画像数 7](#)

製品の概要

製品名	Anti-MEK1 (phospho S298) antibody [EPR3338] - BSA and Azide free
製品の詳細	Rabbit monoclonal [EPR3338] to MEK1 (phospho S298) - BSA and Azide free
由来種	Rabbit
特異性	ab96379 detects MEK1 phosphorylated at threonine 298. The mouse and rat recommendation is based on the WB results. We do not guarantee IHC-P for mouse and rat.
アプリケーション	適用あり: Flow Cyt (Intra), IHC-P, WB, ICC/IF 適用なし: IP
種交差性	交差種: Mouse, Rat, Human
免疫原	Synthetic peptide. This information is proprietary to Abcam and/or its suppliers.
ポジティブ・コントロール	Flow Cyt (intra): HeLa cells; ICC/IF: HeLa cells; IHC-P: Human ovarian carcinoma tissue; WB; Rat and mouse skeletal muscle, HeLa cells.
特記事項	ab214445 is the carrier-free version of ab96379 . Our carrier-free antibodies are typically supplied in a PBS-only formulation, purified and free of BSA, sodium azide and glycerol. The carrier-free buffer and high concentration allow for increased conjugation efficiency. This conjugation-ready format is designed for use with fluorochromes, metal isotopes, oligonucleotides, and enzymes, which makes them ideal for antibody labelling, functional and cell-based assays, flow-based assays (e.g. mass cytometry) and Multiplex Imaging applications. Use our conjugation kits for antibody conjugates that are ready-to-use in as little as 20 minutes with <1 minute hands-on-time and 100% antibody recovery: available for fluorescent dyes, HRP, biotin and gold. This product is compatible with the Maxpar [®] Antibody Labeling Kit from Fluidigm, without the need for antibody preparation. Maxpar [®] is a trademark of Fluidigm Canada Inc. This product is a recombinant monoclonal antibody, which offers several advantages including: <ul style="list-style-type: none"> - High batch-to-batch consistency and reproducibility - Improved sensitivity and specificity - Long-term security of supply

- Animal-free production

For more information [see here](#).

Our RabMAb[®] technology is a patented hybridoma-based technology for making rabbit monoclonal antibodies. For details on our patents, please refer to [RabMAb[®] patents](#).

製品の特性

製品の状態	Liquid
保存方法	Shipped at 4°C. Store at +4°C. Do Not Freeze.
バッファー	pH: 7.2 Constituent: PBS
キャリア・フリー	はい
精製度	Protein A purified
ポリ/モノ	モノクローナル
クローン名	EPR3338
アイソタイプ	IgG

アプリケーション

The Abpromise guarantee **Abpromise保証は、**次のテスト済みアプリケーションにおけるab214445の使用に適用されます
アプリケーションノートには、推奨の開始希釈率がありますが、適切な希釈率につきましてはご検討ください。

アプリケーション	Abreviews	特記事項
Flow Cyt (Intra)		Use at an assay dependent concentration.
IHC-P		Use at an assay dependent concentration. Perform heat mediated antigen retrieval with citrate buffer pH 6 before commencing with IHC staining protocol.
WB		Use at an assay dependent concentration. Detects a band of approximately 45 kDa (predicted molecular weight: 43 kDa).
ICC/IF		Use at an assay dependent concentration.

追加情報 Is unsuitable for IP.

ターゲット情報

機能	Catalyzes the concomitant phosphorylation of a threonine and a tyrosine residue in a Thr-Glu-Tyr sequence located in MAP kinases. Activates ERK1 and ERK2 MAP kinases.
組織特異性	Widely expressed, with extremely low levels in brain.
関連疾患	Defects in MAP2K1 are a cause of cardiofaciocutaneous syndrome (CFC syndrome) [MIM:115150]; also known as cardio-facio-cutaneous syndrome. CFC syndrome is characterized by a distinctive facial appearance, heart defects and mental retardation. Heart defects include pulmonic stenosis, atrial septal defects and hypertrophic cardiomyopathy. Some affected

individuals present with ectodermal abnormalities such as sparse, friable hair, hyperkeratotic skin lesions and a generalized ichthyosis-like condition. Typical facial features are similar to Noonan syndrome. They include high forehead with bitemporal constriction, hypoplastic supraorbital ridges, downslanting palpebral fissures, a depressed nasal bridge, and posteriorly angulated ears with prominent helices. The inheritance of CFC syndrome is autosomal dominant.

配列類似性

Belongs to the protein kinase superfamily. STE Ser/Thr protein kinase family. MAP kinase kinase subfamily.

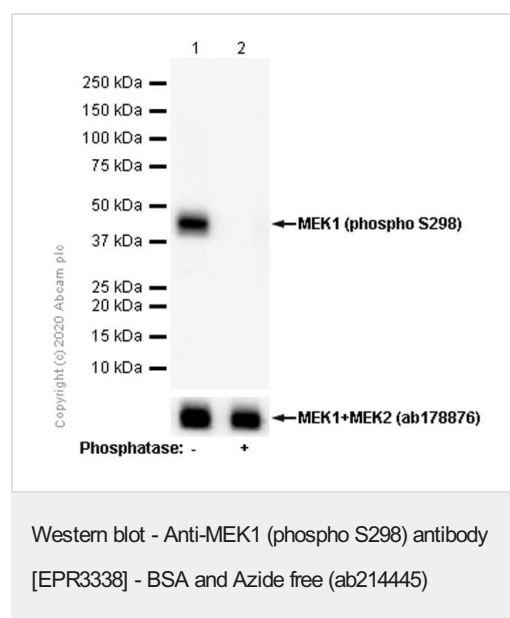
Contains 1 protein kinase domain.

翻訳後修飾

Phosphorylation on Ser/Thr by MAP kinase kinase kinases (RAF or MEKK1) regulates positively the kinase activity.

Acetylation by Yersinia yopJ prevents phosphorylation and activation, thus blocking the MAPK signaling pathway.

画像



All lanes : Anti-MEK1 (phospho S298) antibody [EPR3338] ([ab96379](#)) at 1/1000 dilution (Purified)

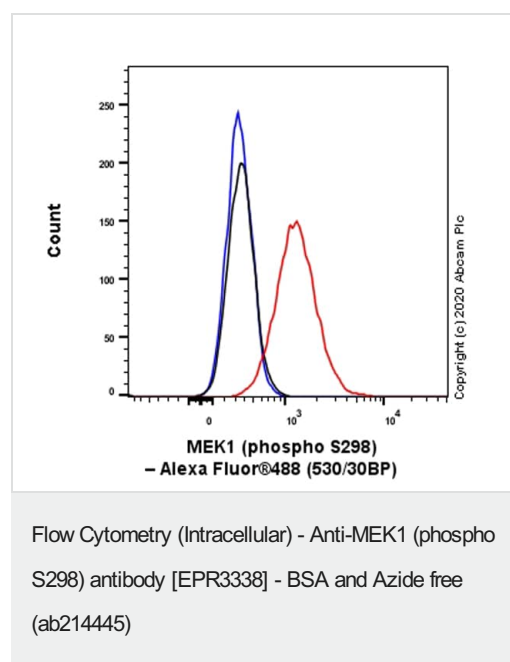
Lane 1 : Rat skeletal muscle lysate

Lane 2 : Rat skeletal muscle lysate, the membrane treated with phosphatase for 1 hour

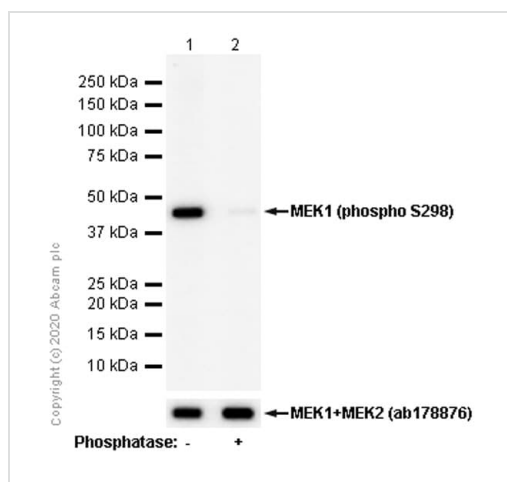
Secondary

All lanes : Goat Anti-Rabbit IgG H&L (HRP) ([ab97051](#)) at 1/20000 dilution

Predicted band size: 43 kDa



This data was developed using [ab96379](#), the same antibody clone in a different buffer formulation. Intracellular Flow Cytometry analysis of HeLa (Human cervix adenocarcinoma epithelial cell) cells labeling MEK1 with Purified [ab96379](#) at 1/100 dilution (10 µg/mL) (Red). Cells were fixed with 4% Paraformaldehyde and permeabilised with 90% Methanol. A Goat anti rabbit IgG (Alexa Fluor® 488, [ab150077](#)) secondary antibody was used at 1/2000. Isotype control - Rabbit monoclonal IgG (Black). Unlabeled control - Cell without incubation with primary antibody and secondary antibody (Blue).



Western blot - Anti-MEK1 (phospho S298) antibody [EPR3338] - BSA and Azide free (ab214445)

All lanes : Anti-MEK1 (phospho S298) antibody [EPR3338] ([ab96379](#)) at 1/1000 dilution (Purified)

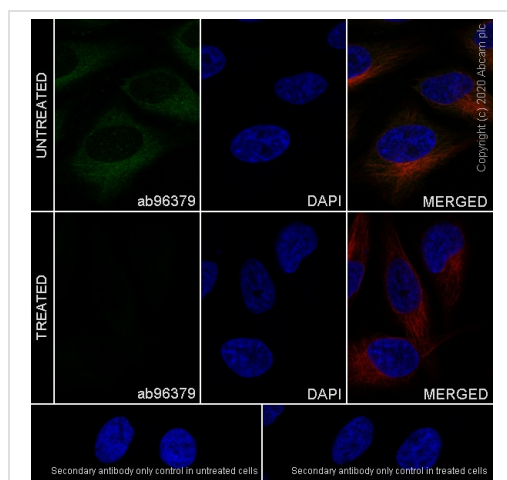
Lane 1 : Mouse skeletal muscle lysate

Lane 2 : Mouse skeletal muscle lysate, the membrane treated with phosphatase for 1 hour

Secondary

All lanes : Goat Anti-Rabbit IgG H&L (HRP) ([ab97051](#)) at 1/20000 dilution

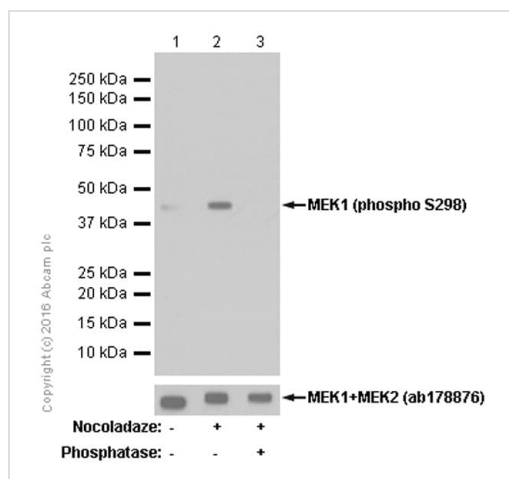
Predicted band size: 43 kDa



Immunocytochemistry/ Immunofluorescence - Anti-MEK1 (phospho S298) antibody [EPR3338] - BSA and Azide free (ab214445)

This data was developed using [ab96379](#), the same antibody clone in a different buffer formulation.

Immunocytochemistry analysis of HeLa (Human cervix adenocarcinoma epithelial cell) treated with lambda phosphatase cells labeling MEK1 with Purified [ab96379](#) at 1/100 dilution (9.53 µg/mL). Cells were fixed in 4% Paraformaldehyde and permeabilized with 0.1% tritonX-100. Cells were counterstained with Ab195889 Anti-alpha Tubulin antibody [DM1A] - Microtubule Marker (Alexa Fluor® 594) 1/200 dilution (2.5 µg/mL). Goat anti rabbit IgG (Alexa Fluor® 488, [ab150077](#)) was used as the secondary antibody at 1/1000 dilution (2 µg/mL). DAPI (blue) was used as nuclear counterstain. PBS instead of the primary antibody was used as the secondary antibody only control.



Western blot - Anti-MEK1 (phospho S298) antibody [EPR3338] - BSA and Azide free (ab214445)

All lanes : Anti-MEK1 (phospho S298) antibody [EPR3338] ([ab96379](#)) at 1/1000 dilution (Purified)

Lane 1 : HeLa (Human cervix adenocarcinoma epithelial cell) whole cell lysate

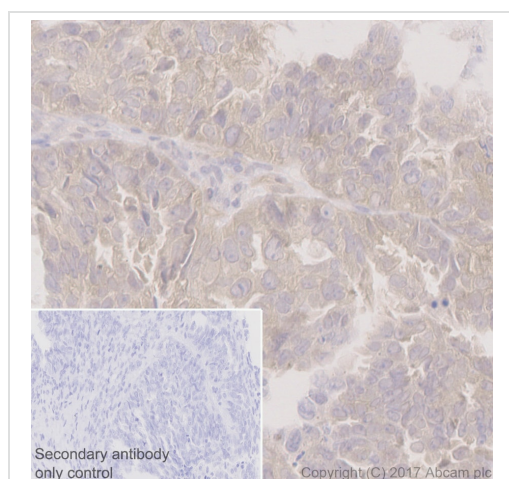
Lane 2 : HeLa (Human cervix adenocarcinoma epithelial cell) treated with 100 ng/ml nocodazole for 18 hours whole cell lysate

Lane 3 : HeLa (Human cervix adenocarcinoma epithelial cell) treated with 100ng/ml nocodazole for 18 hours, then the membrane treated with phosphatase for 1 hour

Secondary

All lanes : Goat Anti-Rabbit IgG H&L (HRP) ([ab97051](#)) at 1/20000 dilution

Predicted band size: 43 kDa



Immunohistochemistry (Formalin/PFA-fixed paraffin-embedded sections) - Anti-MEK1 (phospho S298) antibody [EPR3338] - BSA and Azide free (ab214445)

This data was developed using [ab96379](#), the same antibody clone in a different buffer formulation.

Immunohistochemistry (Formalin/PFA-fixed paraffin-embedded sections) analysis of human ovarian carcinoma tissue sections labeling MEK1 with Purified [ab96379](#) at 1/50 dilution (19.06 µg/mL). Perform heat mediated antigen retrieval using [ab93684](#) (Tris/EDTA buffer, pH 9.0). ImmunoHistoProbe one step HRP Polymer (ready to use) was used as the secondary antibody. Negative control: PBS instead of the primary antibody. Hematoxylin was used as a counterstain.

Why choose a recombinant antibody?



Research with confidence
Consistent and reproducible results



Long-term and scalable supply
Recombinant technology



Success from the first experiment
Confirmed specificity



Ethical standards compliant
Animal-free production

Anti-MEK1 (phospho S298) antibody [EPR3338] -
BSA and Azide free (ab214445)

Please note: All products are "FOR RESEARCH USE ONLY. NOT FOR USE IN DIAGNOSTIC PROCEDURES"

Our Abpromise to you: Quality guaranteed and expert technical support

- Replacement or refund for products not performing as stated on the datasheet
- Valid for 12 months from date of delivery
- Response to your inquiry within 24 hours
- We provide support in Chinese, English, French, German, Japanese and Spanish
- Extensive multi-media technical resources to help you
- We investigate all quality concerns to ensure our products perform to the highest standards

If the product does not perform as described on this datasheet, we will offer a refund or replacement. For full details of the Abpromise, please visit <https://www.abcam.co.jp/abpromise> or contact our technical team.

Terms and conditions

- Guarantee only valid for products bought direct from Abcam or one of our authorized distributors