

Anti-ME1 antibody ab97445

★★★★★ [1 Abreviews](#) [21 References](#) [画像数 2](#)

製品の概要

製品名	Anti-ME1 antibody
製品の詳細	Rabbit polyclonal to ME1
由来種	Rabbit
アプリケーション	適用あり: IHC-P, WB, ICC/IF
種交差性	交差種: Mouse, Rat, Human 交差が予測される動物種: Cow 
免疫原	Recombinant fragment corresponding to a region within amino acids 161-489 of Human ME1 (NP_002386).
特記事項	<p>The Life Science industry has been in the grips of a reproducibility crisis for a number of years. Abcam is leading the way in addressing this with our range of recombinant monoclonal antibodies and knockout edited cell lines for gold-standard validation. Please check that this product meets your needs before purchasing.</p> <p>If you have any questions, special requirements or concerns, please send us an inquiry and/or contact our Support team ahead of purchase. Recommended alternatives for this product can be found below, along with publications, customer reviews and Q&As</p>

製品の特性

製品の状態	Liquid
保存方法	Shipped at 4°C. Upon delivery aliquot. Store at -20°C or -80°C. Avoid freeze / thaw cycle.
バッファー	pH: 7.00 Preservative: 0.025% Proclin 300 Constituents: 79% PBS, 20% Glycerol (glycerin, glycerine)
精製度	Immunogen affinity purified
ポリ/モノ	ポリクローナル
アイソタイプ	IgG

アプリケーション

The Abpromise guarantee

Abpromise保証は、 次のテスト済みアプリケーションにおけるab97445の使用に適用されます

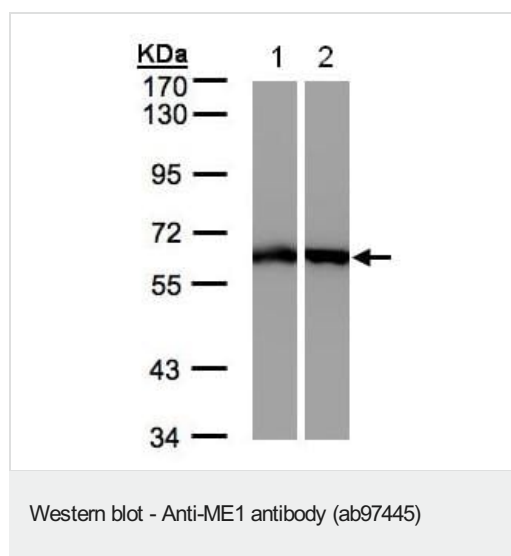
アプリケーションノートには、推奨の開始希釈率がありますが、適切な希釈率につきましてはご確認ください。

アプリケーション	Abreviews	特記事項
IHC-P		Use at an assay dependent concentration.
WB	★★★★★ (1)	1/500 - 1/3000. Predicted molecular weight: 64 kDa.
ICC/IF		1/100 - 1/200.

ターゲット情報

組織特異性	Expressed in all tissues tested including liver, placenta and white adipose tissue.
配列類似性	Belongs to the malic enzymes family.
細胞内局在	Cytoplasm.

画像



All lanes : Anti-ME1 antibody (ab97445) at 1/500 dilution

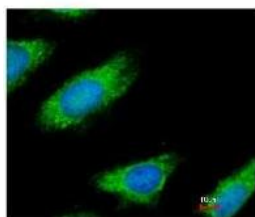
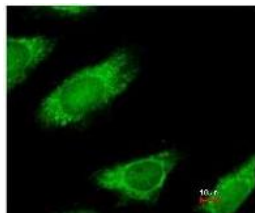
Lane 1 : A431 whole cell lysate

Lane 2 : HeLa S3 whole cell lysate

Lysates/proteins at 30 µg per lane.

Predicted band size: 64 kDa

7.5% SDS PAGE



Immunofluorescence analysis of ME1 in paraformaldehyde fixed HeLa, using ab97445 at a 1/200 dilution.
Lower image: merged with DNA probe.

Immunocytochemistry/ Immunofluorescence - Anti-ME1 antibody (ab97445)

Please note: All products are "FOR RESEARCH USE ONLY. NOT FOR USE IN DIAGNOSTIC PROCEDURES"

Our Abpromise to you: Quality guaranteed and expert technical support

- Replacement or refund for products not performing as stated on the datasheet
- Valid for 12 months from date of delivery
- Response to your inquiry within 24 hours
- We provide support in Chinese, English, French, German, Japanese and Spanish
- Extensive multi-media technical resources to help you
- We investigate all quality concerns to ensure our products perform to the highest standards

If the product does not perform as described on this datasheet, we will offer a refund or replacement. For full details of the Abpromise, please visit <https://www.abcam.co.jp/abpromise> or contact our technical team.

Terms and conditions

- Guarantee only valid for products bought direct from Abcam or one of our authorized distributors