

### Anti-MD2 antibody ab24182

★★★★★ [15 Abreviews](#) [38 References](#) [画像数 10](#)

#### 製品の概要

製品名	Anti-MD2 antibody
製品の詳細	Rabbit polyclonal to MD2
由来種	Rabbit
アプリケーション	<b>適用あり:</b> WB, ICC/IF, IHC-P
種交差性	<b>交差種:</b> Mouse, Rat, Human
免疫原	Synthetic peptide corresponding to Human MD2. MD-2 antibody was raised against a peptide corresponding to 13 amino acids near the center of human MD-2. The immunogen is located within the last 50 amino acids of MD-2. Database link: <a href="#">Q9Y6Y9</a> (Peptide available as <a href="#">ab39815</a> )

#### 特記事項

The Life Science industry has been in the grips of a reproducibility crisis for a number of years. Abcam is leading the way in addressing this with our range of recombinant monoclonal antibodies and knockout edited cell lines for gold-standard validation. Please check that this product meets your needs before purchasing.

If you have any questions, special requirements or concerns, please send us an inquiry and/or contact our Support team ahead of purchase. Recommended alternatives for this product can be found below, along with publications, customer reviews and Q&As

#### 製品の特性

製品の状態	Liquid
保存方法	Shipped at 4°C. Store at +4°C short term (1-2 weeks). Store at +4°C.
バッファー	pH: 7.2 Preservative: 0.02% Sodium azide Constituent: PBS
精製度	Affinity purified
特記事項(精製)	Via peptide column.
ポリ/モノ	ポリクローナル
アイソタイプ	IgG

## アプリケーション

### The Abpromise guarantee

**Abpromise保証は、次のテスト済みアプリケーションにおけるab24182の使用に適用されます**

アプリケーションノートには、推奨の開始希釈率がありますが、適切な希釈率につきましてはご検討ください。

アプリケーション	Abreviews	特記事項
WB	★★★★☆ (5)	Use a concentration of 0.5 - 2 µg/ml. Detects a band of approximately 25 kDa (predicted molecular weight: 18 kDa).
ICC/IF	★★★★★ (2)	Use at an assay dependent concentration.
IHC-P	★★★★☆ (5)	Use at an assay dependent concentration.

## ターゲット情報

### 機能

Cooperates with TLR4 in the innate immune response to bacterial lipopolysaccharide (LPS), and with TLR2 in the response to cell wall components from Gram-positive and Gram-negative bacteria. Enhances TLR4-dependent activation of NF-kappa-B. Cells expressing both MD2 and TLR4, but not TLR4 alone, respond to LPS.

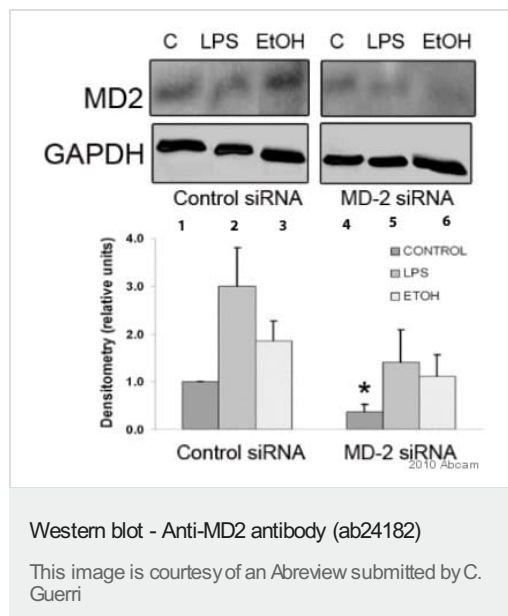
### 翻訳後修飾

N-glycosylated; high-mannose.

### 細胞内局在

Secreted > extracellular space.

## 画像



**All lanes** : Anti-MD2 antibody (ab24182) at 2 µg/ml (in 5% milk in TBS/T 0.1% (blocking buffer) for 12 hours at 4°C)

**Lane 1** : Whole cell lysate of rat cortical astrocytes treated with control siRNA for 96 hours

**Lane 2** : Whole cell lysate of rat cortical astrocytes treated with control siRNA for 96 hours and LPS (50 ng/ml) for 10 minutes

**Lane 3** : Whole cell lysate of rat cortical astrocytes treated with control siRNA for 96 hours and ethanol (50 mM) for 10 minutes

**Lane 4** : Whole cell lysate of rat cortical astrocytes treated with MD2 siRNA for 96 hours

**Lane 5** : Whole cell lysate of rat cortical astrocytes treated with MD2 siRNA for 96 hours and LPS (50 ng/ml) for 10 minutes

**Lane 6** : Whole cell lysate of rat cortical astrocytes treated with MD2 siRNA for 96 hours and ethanol (50 mM) for 10 minutes

Lysates/proteins at 40 µg per lane.

### Secondary

**All lanes** : An HRP-conjugated Goat anti-rabbit IgG at 1/20000

dilution

Developed using the ECL technique.

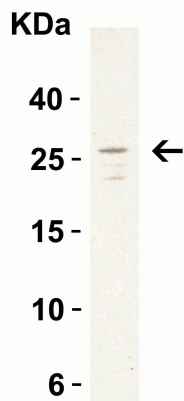
Performed under reducing conditions.

**Predicted band size:** 18 kDa

**Observed band size:** 25 kDa

**Exposure time:** 2 minutes

**Blocking Step:** 5% Milk for 1 hour at room temperature.



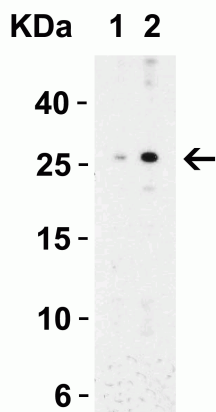
Western blot - Anti-MD2 antibody (ab24182)

Anti-MD2 antibody (ab24182) at 1 µg/ml + Daudi cell lysate at 15 µg

**Secondary**

Goat anti-rabbit IgG HRP conjugate at 1/10000 dilution

**Predicted band size:** 18 kDa



Western blot - Anti-MD2 antibody (ab24182)

**Lane 1 :** Anti-TRIM5 delta antibody (**ab24181**) at 0.5 µg/ml

**Lane 2 :** Anti-TRIM5 delta antibody (**ab24181**) at 1 µg/ml

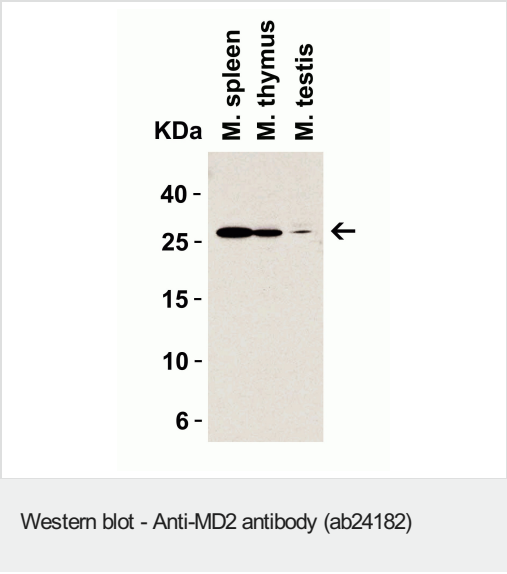
**All lanes :** Mouse spleen tissue

Lysates/proteins at 15 µg per lane.

**Secondary**

**All lanes :** Goat anti-rabbit IgG HRP conjugate at 1/10000 dilution

**Predicted band size:** 18 kDa



**All lanes :** Anti-MD2 antibody (ab24182) at 1 µg/ml

**Lane 1 :** Mouse spleen lysate

**Lane 2 :** Mouse thymus lysate

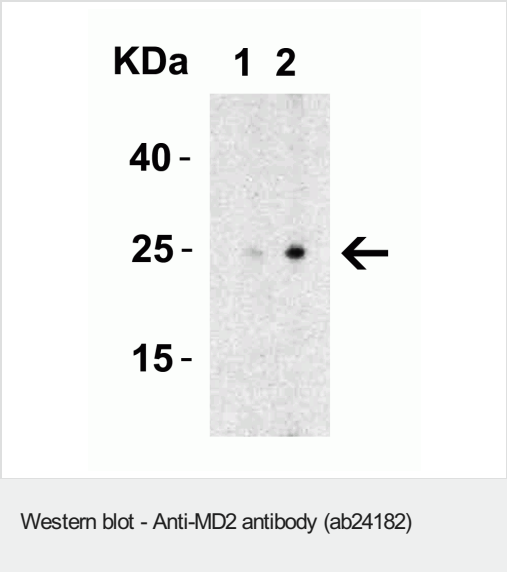
**Lane 3 :** Mouse testis lysate

Lysates/proteins at 15 µg per lane.

**Secondary**

**All lanes :** Goat anti-rabbit IgG HRP conjugate at 1/10000 dilution

**Predicted band size:** 18 kDa



**All lanes :** Anti-MD2 antibody (ab24182)

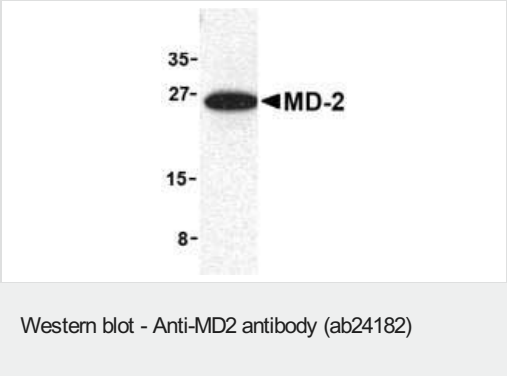
**All lanes :** Rat spleen lysate

Lysates/proteins at 15 µg per lane.

**Secondary**

**All lanes :** Goat anti-rabbit IgG HRP conjugate at 1/10000 dilution

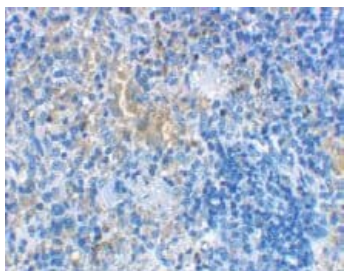
**Predicted band size:** 18 kDa



Anti-MD2 antibody (ab24182) at 1 µg/ml (mouse spleen lysate)

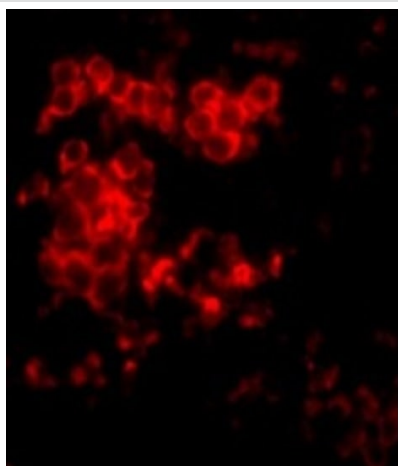
**Predicted band size:** 18 kDa

**Observed band size:** 26 kDa



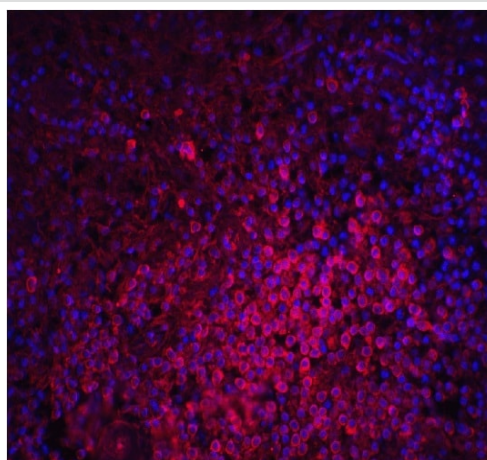
Immunohistochemistry (Formalin/PFA-fixed paraffin-embedded sections) - Anti-MD2 antibody (ab24182)

ab24182 at 2µg/ml staining of MD2 in rat spleen cells by IHC



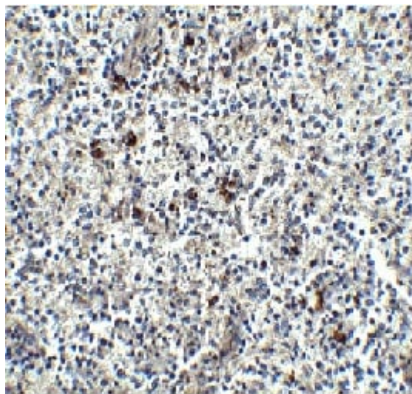
Immunocytochemistry/ Immunofluorescence - Anti-MD2 antibody (ab24182)

Immunofluorescent analysis of MD2 in Rat Spleen cells with ab24182 at 10 µg/mL in ICC/IF.



Immunocytochemistry/ Immunofluorescence - Anti-MD2 antibody (ab24182)

Immunofluorescent analysis of MD2 in human spleen cells with ab24182 at 20 µg/mL in ICC/IF.



Immunohistochemical analysis of human spleen tissue stained for MD2 using ab24182 at 2.5µg/mL.

Immunohistochemistry (Formalin/PFA-fixed paraffin-embedded sections) - Anti-MD2 antibody (ab24182)

**Please note:** All products are "FOR RESEARCH USE ONLY. NOT FOR USE IN DIAGNOSTIC PROCEDURES"

#### **Our Abpromise to you: Quality guaranteed and expert technical support**

---

- Replacement or refund for products not performing as stated on the datasheet
- Valid for 12 months from date of delivery
- Response to your inquiry within 24 hours
- We provide support in Chinese, English, French, German, Japanese and Spanish
- Extensive multi-media technical resources to help you
- We investigate all quality concerns to ensure our products perform to the highest standards

If the product does not perform as described on this datasheet, we will offer a refund or replacement. For full details of the Abpromise, please visit <https://www.abcam.co.jp/abpromise> or contact our technical team.

#### **Terms and conditions**

---

- Guarantee only valid for products bought direct from Abcam or one of our authorized distributors