

Anti-MD1 antibody ab45424

[2 References](#) [画像数 2](#)

製品の概要

製品名	Anti-MD1 antibody
製品の詳細	Rabbit polyclonal to MD1
由来種	Rabbit
アプリケーション	適用あり: IHC-P, WB
種交差性	交差種: Human
免疫原	Synthetic 15 amino acid peptide from near the center of human MD1
ポジティブ・コントロール	Daudi cell lysate.
特記事項	<p>The Life Science industry has been in the grips of a reproducibility crisis for a number of years. Abcam is leading the way in addressing this with our range of recombinant monoclonal antibodies and knockout edited cell lines for gold-standard validation. Please check that this product meets your needs before purchasing.</p> <p>If you have any questions, special requirements or concerns, please send us an inquiry and/or contact our Support team ahead of purchase. Recommended alternatives for this product can be found below, along with publications, customer reviews and Q&As</p>

製品の特性

製品の状態	Liquid
保存方法	Shipped at 4°C. Store at +4°C.
バッファー	pH: 7.2 Preservative: 0.02% Sodium azide Constituent: PBS
精製度	Immunogen affinity purified
特記事項(精製)	This antibody is an immunoaffinity purified IgG
ポリモノ	ポリクローナル
アイソタイプ	IgG

アプリケーション

The Abpromise guarantee

Abpromise保証は、次のテスト済みアプリケーションにおけるab45424の使用に適用されます

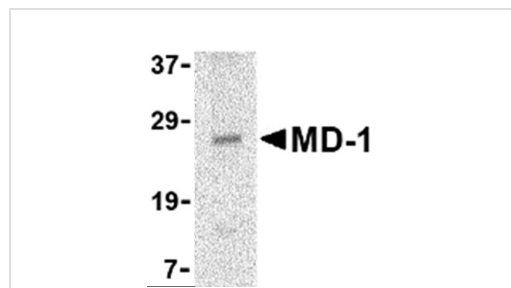
アプリケーションノートには、推奨の開始希釈率がありますが、適切な希釈率につきましてはご確認ください。

アプリケーション	Abreviews	特記事項
IHC-P		Use a concentration of 2.5 µg/ml.
WB		Use a concentration of 1 - 2 µg/ml. Detects a band of approximately 27 kDa (predicted molecular weight: 18 kDa).

ターゲット情報

機能	May cooperate with CD180 and TLR4 to mediate the innate immune response to bacterial lipopolysaccharide (LPS) and cytokine production. Important for efficient CD180 cell surface expression.
組織特異性	Highly expressed in B-cells, monocytes and tonsil.
細胞内局在	Secreted > extracellular space. Associated with CD180 at the cell surface.

画像

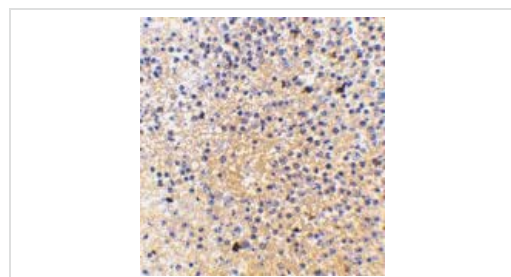


Western blot - Anti-MD1 antibody (ab45424)

Anti-MD1 antibody (ab45424) at 2 µg/ml + Daudi cell lysate at 15 µg

Predicted band size: 18 kDa

Observed band size: 27 kDa



Immunohistochemistry (Formalin/PFA-fixed paraffin-embedded sections) - Anti-MD1 antibody (ab45424)

ab45424 at 2.5µg/ml staining MD1 in human spleen tissue section by Immunohistochemistry (Formalin/ PFA fixed paraffin-embedded tissue sections).

Please note: All products are "FOR RESEARCH USE ONLY. NOT FOR USE IN DIAGNOSTIC PROCEDURES"

Our Abpromise to you: Quality guaranteed and expert technical support

- Replacement or refund for products not performing as stated on the datasheet
- Valid for 12 months from date of delivery
- Response to your inquiry within 24 hours

- We provide support in Chinese, English, French, German, Japanese and Spanish
- Extensive multi-media technical resources to help you
- We investigate all quality concerns to ensure our products perform to the highest standards

If the product does not perform as described on this datasheet, we will offer a refund or replacement. For full details of the Abpromise, please visit <https://www.abcam.co.jp/abpromise> or contact our technical team.

Terms and conditions

- Guarantee only valid for products bought direct from Abcam or one of our authorized distributors