

Anti-MCP1 antibody ab9669

★★★★★ [4 Abreviews](#) [96 References](#) [画像数 4](#)

製品の概要

製品名	Anti-MCP1 antibody
製品の詳細	Rabbit polyclonal to MCP1
由来種	Rabbit
アプリケーション	適用あり: WB, Sandwich ELISA
種交差性	交差種: Human
免疫原	Recombinant fragment corresponding to Human MCP1. Run BLAST with ExPASy Run BLAST with NCBI
特記事項	<p>Although some customers have been successful in IHC we no longer batch test in this application. For and IHC validated antibody please see ab73680</p> <p>The Life Science industry has been in the grips of a reproducibility crisis for a number of years. Abcam is leading the way in addressing this with our range of recombinant monoclonal antibodies and knockout edited cell lines for gold-standard validation. Please check that this product meets your needs before purchasing.</p> <p>If you have any questions, special requirements or concerns, please send us an inquiry and/or contact our Support team ahead of purchase. Recommended alternatives for this product can be found below, along with publications, customer reviews and Q&As</p>

製品の特性

製品の状態	Lyophilized:Reconstitute with 200µl of sterile water. Please note that if you receive this product in liquid form it has already been reconstituted as described and no further reconstitution is necessary.
保存方法	Shipped at 4°C. Store at +4°C short term (1-2 weeks). Upon delivery aliquot. Store at -20°C long term.
精製度	Immunogen affinity purified
ポリ/モノ	ポリクローナル
アイソタイプ	IgG
軽鎖の種類	unknown

アプリケーション

The Abpromise guarantee

Abpromise保証は、次のテスト済みアプリケーションにおけるab9669の使用に適用されます

アプリケーションノートには、推奨の開始希釈率がありますが、適切な希釈率につきましてはご検討ください。

アプリケーション	Abreviews	特記事項
WB	★★★★☆ (3)	Use a concentration of 0.1 - 0.2 µg/ml. To detect hMCAF/MCP-1 by Western Blot analysis this antibody can be used at a concentration of 0.1 - 0.2 µg/ml. Used in conjunction with compatible secondary reagents the detection limit for recombinant MCP-1 is 1.5 - 3.0 ng/lane, under either reducing or non-reducing conditions.
Sandwich ELISA		Use a concentration of 0.5 - 2 µg/ml. Can be paired for Sandwich ELISA with Mouse monoclonal [2.2-4H5-1A11] to MCP1 (ab9858) . To detect MCP-1 by sandwich ELISA (using 100 µl/well antibody solution) a concentration of 0.5 - 2.0 µg/ml of ab9669 is required. This antigen affinity purified antibody, in conjunction with ab271250 as a detection antibody, allows the detection of at

ターゲット情報

機能

Chemotactic factor that attracts monocytes and basophils but not neutrophils or eosinophils. Augments monocyte anti-tumor activity. Has been implicated in the pathogenesis of diseases characterized by monocytic infiltrates, like psoriasis, rheumatoid arthritis or atherosclerosis. May be involved in the recruitment of monocytes into the arterial wall during the disease process of atherosclerosis.

配列類似性

Belongs to the intercrine beta (chemokine CC) family.

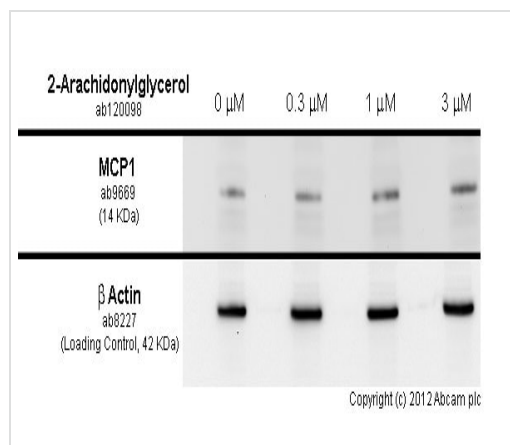
翻訳後修飾

Processing at the N-terminus can regulate receptor and target cell selectivity. Deletion of the N-terminal residue converts it from an activator of basophil to an eosinophil chemoattractant.

細胞内局在

Secreted.

画像

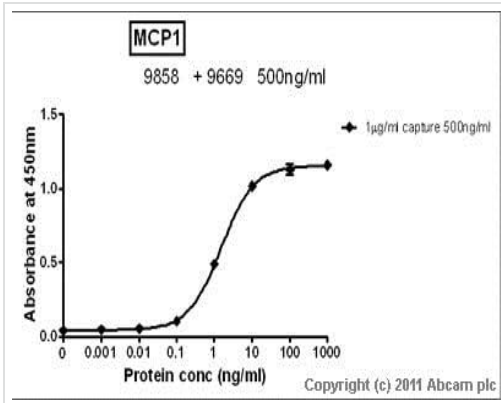


Western blot - Anti-MCP1 antibody (ab9669)

HL-60 cells were incubated at 37°C for 24hrs with vehicle control (0 µM) and varied concentrations of 2-Arachidonylglycerol (**ab120098**). Increased expression of MCP1 in HL-60 cells correlates with an increase in 2-Arachidonylglycerol concentration, as described in literature.

Whole cell lysates were prepared with RIPA buffer (containing protease inhibitors and sodium orthovanadate), 10µg of each were loaded on the gel and the WB was run under reducing conditions. After transfer the membrane was blocked for an hour using 5% BSA before being incubated with ab9669 at 1 µg/ml and **ab8227** at 1 µg/ml overnight at 4°C. Antibody binding was detected using an anti-rabbit antibody conjugated to HRP (**ab97051**) at 1/10000

dilution and visualised using ECL development solution.



Sandwich ELISA - Anti-MCP1 antibody (ab9669)

Standard curve for MCP1 (Analyte: **ab73866**); dilution range 1pg/ml to 1µg/ml using Capture Antibody Mouse monoclonal to MCP1 (**ab9858**) at 1µg/ml and Detector Antibody Rabbit polyclonal to MCP1 (ab9669) at 0.5µg/ml.



Western blot - Anti-MCP1 antibody (ab9669)

All lanes : Anti-MCP1 antibody (ab9669) at 0.2 µg/ml

Lane 1 : Recombinant human MCP1 protein (**ab73866**) at 0.01 µg

Lane 2 : Recombinant human MCP1 protein (**ab73866**) at 0.001 µg

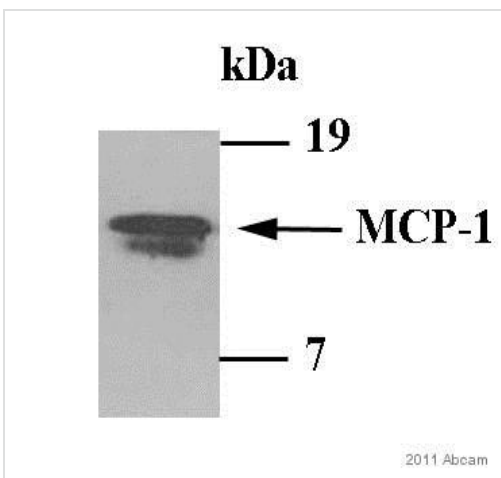
Secondary

All lanes : Goat Anti-Rabbit IgG H&L (HRP) preadsorbed (**ab97080**) at 1/5000 dilution

Developed using the ECL technique.

Performed under reducing conditions.

Exposure time: 1 minute



Western blot - Anti-MCP1 antibody (ab9669)

Image courtesy of Dr Laura Toma by Abreview.

Anti-MCP1 antibody (ab9669) at 1/4000 dilution + lysate prepared from human smooth muscle treated with 100µg/ml glycated LDL at 10 µg

Secondary

Goat Anti-Rabbit IgG H&L (HRP) (**ab6721**) at 1/20000 dilution

Developed using the ECL technique.

Observed band size: 12-14 kDa

Exposure time: 1 minute

Please note: All products are "FOR RESEARCH USE ONLY. NOT FOR USE IN DIAGNOSTIC PROCEDURES"

Our Abpromise to you: Quality guaranteed and expert technical support

- Replacement or refund for products not performing as stated on the datasheet
- Valid for 12 months from date of delivery
- Response to your inquiry within 24 hours

- We provide support in Chinese, English, French, German, Japanese and Spanish
- Extensive multi-media technical resources to help you
- We investigate all quality concerns to ensure our products perform to the highest standards

If the product does not perform as described on this datasheet, we will offer a refund or replacement. For full details of the Abpromise, please visit <https://www.abcam.co.jp/abpromise> or contact our technical team.

Terms and conditions

- Guarantee only valid for products bought direct from Abcam or one of our authorized distributors