

Anti-MCP1 antibody [2.2-4H5-1A11] ab9858

[1 Abreviews](#) [4 References](#) [画像数 2](#)

製品の概要

製品名	Anti-MCP1 antibody [2.2-4H5-1A11]
製品の詳細	Mouse monoclonal [2.2-4H5-1A11] to MCP1
由来種	Mouse
アプリケーション	適用あり: WB, IHC-P, ELISA, Sandwich ELISA
種交差性	交差種: Human, Recombinant fragment
免疫原	Recombinant full length protein corresponding to Human MCP1. Recombinant hMCAF/MCP-1 (human Macrophage/Monocyte chemotactic protein-1) Database link: P13500
ポジティブ・コントロール	WB: Recombinant human MCP1 protein (ab9670).
特記事項	<p>This product is no longer batch tested in IHC, for an IHC validated antibody please see ab73680</p> <p>The Life Science industry has been in the grips of a reproducibility crisis for a number of years. Abcam is leading the way in addressing this with our range of recombinant monoclonal antibodies and knockout edited cell lines for gold-standard validation. Please check that this product meets your needs before purchasing.</p> <p>If you have any questions, special requirements or concerns, please send us an inquiry and/or contact our Support team ahead of purchase. Recommended alternatives for this product can be found below, along with publications, customer reviews and Q&As</p>

製品の特性

製品の状態	Lyophilized:Reconstitute with 500µl of sterile water. Please note that if you receive this product in liquid form it has already been reconstituted as described and no further reconstitution is necessary.
保存方法	Shipped at 4°C. Store at +4°C short term (1-2 weeks). Upon delivery aliquot. Store at -20°C long term.
精製度	Protein A purified
ポリ/モノ	モノクローナル
クローン名	2.2-4H5-1A11
ミエローマ	unknown
アイソタイプ	IgG1

アプリケーション

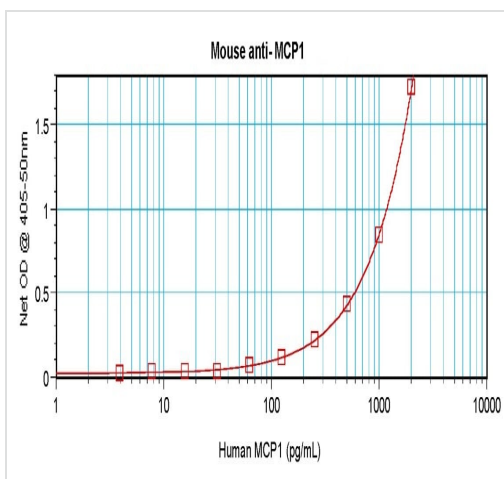
The Abpromise guarantee **Abpromise保証は、** 次のテスト済みアプリケーションにおけるab9858の使用に適用されます
アプリケーションノートには、推奨の開始希釈率がありますが、適切な希釈率につきましてはご確認ください。

アプリケーション	Abreviews	特記事項
WB		Use at an assay dependent concentration.
IHC-P		Use at an assay dependent concentration.
ELISA		Use at an assay dependent concentration.
Sandwich ELISA		Use a concentration of 1 µg/ml. Can be paired for Sandwich ELISA with Rabbit polyclonal to MCP1 (ab9669) . For sandwich ELISA, use this antibody as Capture at 1 µg/ml with ab9669 as Detection.

ターゲット情報

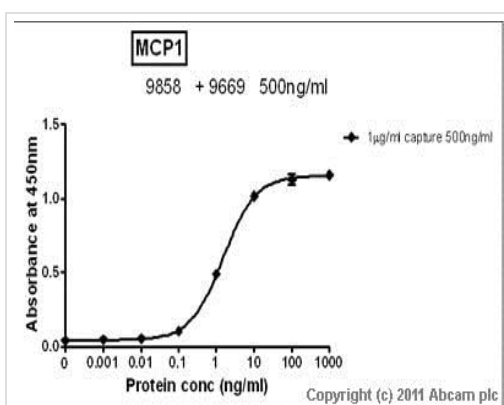
機能	Chemotactic factor that attracts monocytes and basophils but not neutrophils or eosinophils. Augments monocyte anti-tumor activity. Has been implicated in the pathogenesis of diseases characterized by monocytic infiltrates, like psoriasis, rheumatoid arthritis or atherosclerosis. May be involved in the recruitment of monocytes into the arterial wall during the disease process of atherosclerosis.
配列類似性	Belongs to the intercrine beta (chemokine CC) family.
翻訳後修飾	Processing at the N-terminus can regulate receptor and target cell selectivity. Deletion of the N-terminal residue converts it from an activator of basophil to an eosinophil chemoattractant.
細胞内局在	Secreted.

画像



Sandwich ELISA - Anti-MCP1 antibody [2.2-4H5-1A11] (ab9858)

In a sandwich ELISA (assuming 100 µl/well), a concentration of 1.0-2.0 µg/ml of this antibody will detect at least 100 pg/mL of Recombinant Human MCP-1 when used with Biotin Anti-MCP1 antibody (**ab271250**) as the detection antibody at a concentration of approximately 0.5-1.0 µg/mL.



Sandwich ELISA - Anti-MCP1 antibody [2.2-4H5-1A11] (ab9858)

Standard curve for MCP1 (Analyte: **ab73866**); dilution range 1pg/ml to 1µg/ml using Capture Antibody Mouse monoclonal to MCP1 (ab9858) at 1µg/ml and Detector Antibody Rabbit polyclonal to MCP1 (**ab9669**) at 0.5µg/ml.

Please note: All products are "FOR RESEARCH USE ONLY. NOT FOR USE IN DIAGNOSTIC PROCEDURES"

Our Abpromise to you: Quality guaranteed and expert technical support

- Replacement or refund for products not performing as stated on the datasheet
- Valid for 12 months from date of delivery
- Response to your inquiry within 24 hours
- We provide support in Chinese, English, French, German, Japanese and Spanish
- Extensive multi-media technical resources to help you
- We investigate all quality concerns to ensure our products perform to the highest standards

If the product does not perform as described on this datasheet, we will offer a refund or replacement. For full details of the Abpromise, please visit <https://www.abcam.co.jp/abpromise> or contact our technical team.

Terms and conditions

- Guarantee only valid for products bought direct from Abcam or one of our authorized distributors