


### Anti-MCM2 (phospho S108) antibody [EPR4121] ab109271

リコンビナント **RabMAb**

#### 4 References [画像数 4](#)

#### 製品の概要

|              |  |
|--------------|--|
| 製品名          | Anti-MCM2 (phospho S108) antibody [EPR4121]  |
| 製品の詳細        | Rabbit monoclonal [EPR4121] to MCM2 (phospho S108)   |
| 由来種          | Rabbit   |
| アプリケーション     | <b>適用あり:</b> WB, IP, ICC/IF<br><b>適用なし:</b> Flow Cyt or IHC-P  |
| 種交差性         | <b>交差種:</b> Mouse, Human<br><b>交差が予測される動物種:</b> Rat   |
| 免疫原          | Synthetic peptide. This information is proprietary to Abcam and/or its suppliers.  |
| ポジティブ・コントロール | HeLa whole cell lysate ( <a href="#">ab150035</a> ); HeLa cells.   |
| 特記事項         | This product is a recombinant monoclonal antibody, which offers several advantages including: <ul style="list-style-type: none"> <li>- High batch-to-batch consistency and reproducibility</li> <li>- Improved sensitivity and specificity</li> <li>- Long-term security of supply</li> <li>- Animal-free production</li> </ul> For more information <a href="#">see here</a> .<br>Our RabMAb <sup>®</sup> technology is a patented hybridoma-based technology for making rabbit monoclonal antibodies. For details on our patents, please refer to <a href="#">RabMAb<sup>®</sup> patents</a> . |

#### 製品の特性

|       |  |
|-------|--|
| 製品の状態 | Liquid   |
| 保存方法  | Shipped at 4°C. Store at -20°C. Stable for 12 months at -20°C.   |
| バッファー | pH: 7.20<br>Preservative: 0.05% Sodium azide<br>Constituents: 0.1% BSA, 40% Glycerol (glycerin, glycerine), 9.85% Tris glycine, 50% Tissue culture supernatant |
| 精製度   | Protein A purified   |
| ポリ/モノ | モノクローナル  |
| クローン名 | EPR4121  |

アイソタイプIgG

アプリケーション

The Abpromise guarantee      **Abpromise保証は、** 次のテスト済みアプリケーションにおけるab109271の使用に適用されます  
アプリケーションノートには、推奨の開始希釈率がありますが、適切な希釈率につきましてはご検討ください。

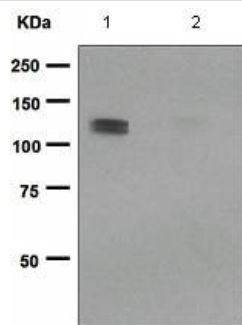
| アプリケーション | Abreviews | 特記事項   |
|----------|-----------|--|
| WB       |           | 1/1000 - 1/10000. Detects a band of approximately 125 kDa (predicted molecular weight: 102 kDa). |
| IP       |           | 1/10 - 1/100.  |
| ICC/IF   |           | 1/100 - 1/250.   |

追加情報      Is unsuitable for Flow Cyt or IHC-P.

ターゲット情報

|       |  |
|-------|--|
| 機能    | Acts as component of the MCM2-7 complex (MCM complex) which is the putative replicative helicase essential for 'once per cell cycle' DNA replication initiation and elongation in eukaryotic cells. The active ATPase sites in the MCM2-7 ring are formed through the interaction surfaces of two neighboring subunits such that a critical structure of a conserved arginine finger motif is provided in trans relative to the ATP-binding site of the Walker A box of the adjacent subunit. The six ATPase active sites, however, are likely to contribute differentially to the complex helicase activity. Required for the entry in S phase and for cell division. |
| 配列類似性 | Belongs to the MCM family.<br>Contains 1 MCM domain.   |
| 翻訳後修飾 | Phosphorylated on Ser-108 by ATR in proliferating cells. Ser-108 proliferation is increased by genotoxic agents. Ser-40 is mediated by the CDC7-DBF4 and CDC7-DBF4B complexes, while Ser-53 phosphorylation is only mediated by the CDC7-DBF4 complex. Phosphorylation by the CDC7-DBF4 complex during G1/S phase is required for the initiation of DNA replication.   |
| 細胞内局在 | Nucleus.   |

画像



Western blot - Anti-MCM2 (phospho S108) antibody [EPR4121] (ab109271)

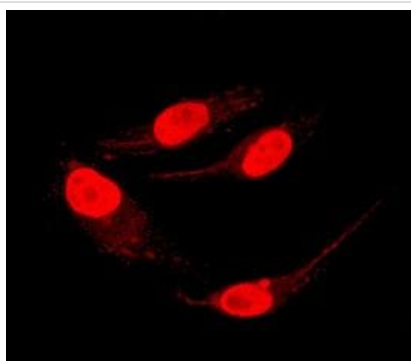
**All lanes :** Anti-MCM2 (phospho S108) antibody [EPR4121] (ab109271) at 1/1000 dilution

**Lane 1 :** HeLa cell lysate, untreated

**Lane 2 :** HeLa cell lysate, treated with Alkaline Phosphatase (AP)

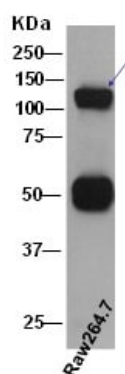
Lysates/proteins at 10 µg per lane.

**Predicted band size:** 102 kDa



Immunocytochemistry/ Immunofluorescence - Anti-MCM2 (phospho S108) antibody [EPR4121] (ab109271)

Immunofluorescent staining of HeLa cells using ab109271 at a dilution of 1/100.



Immunoprecipitation - Anti-MCM2 (phospho S108) antibody [EPR4121] (ab109271)

MCM2 was immunoprecipitated from Raw264.7 (Mouse macrophage cell line transformed with Abelson murine leukemia virus) with ab109271 at 1/80 dilution.

Exposure time: 10 second.

### Why choose a recombinant antibody?



**Research with confidence**  
Consistent and reproducible results



**Long-term and scalable supply**  
Recombinant technology



**Success from the first experiment**  
Confirmed specificity



**Ethical standards compliant**  
Animal-free production

Anti-MCM2 (phospho S108) antibody [EPR4121]  
(ab109271)

**Please note:** All products are "FOR RESEARCH USE ONLY. NOT FOR USE IN DIAGNOSTIC PROCEDURES"

### Our Abpromise to you: Quality guaranteed and expert technical support

---

- Replacement or refund for products not performing as stated on the datasheet
- Valid for 12 months from date of delivery
- Response to your inquiry within 24 hours
- We provide support in Chinese, English, French, German, Japanese and Spanish
- Extensive multi-media technical resources to help you
- We investigate all quality concerns to ensure our products perform to the highest standards

If the product does not perform as described on this datasheet, we will offer a refund or replacement. For full details of the Abpromise, please visit <https://www.abcam.co.jp/abpromise> or contact our technical team.

### Terms and conditions

---

- Guarantee only valid for products bought direct from Abcam or one of our authorized distributors