

Anti-MCL1 (phospho S159) antibody ab111574

★★★★★ [1 Abreviews](#) [4 References](#) [画像数 1](#)

製品の概要

| | |
|----------|---|
| 製品名 | Anti-MCL1 (phospho S159) antibody |
| 製品の詳細 | Rabbit polyclonal to MCL1 (phospho S159) |
| 由来種 | Rabbit |
| アプリケーション | 適用あり: ICC/IF |
| 種交差性 | 交差種: Human |
| 免疫原 | Synthetic peptide corresponding to Human MCL1 (phospho S159). |
| 特記事項 | <p>The Life Science industry has been in the grips of a reproducibility crisis for a number of years. Abcam is leading the way in addressing this with our range of recombinant monoclonal antibodies and knockout edited cell lines for gold-standard validation. Please check that this product meets your needs before purchasing.</p> <p>If you have any questions, special requirements or concerns, please send us an inquiry and/or contact our Support team ahead of purchase. Recommended alternatives for this product can be found below, along with publications, customer reviews and Q&As</p> |

製品の特性

| | |
|-----------|---|
| 製品の状態 | Liquid |
| 保存方法 | Shipped at 4°C. Store at -20°C. Stable for 12 months at -20°C. |
| バッファー | <p>pH: 7.40</p> <p>Preservative: 0.02% Sodium azide</p> <p>Constituents: 49% PBS, 50% Glycerol (glycerin, glycerine), 0.88% Sodium chloride</p> |
| 精製度 | Immunogen affinity purified |
| 特記事項 (精製) | ab111574 was affinity-purified from rabbit antiserum by affinity-chromatography using epitope-specific phosphopeptide. The antibody against non-phosphopeptide was removed by chromatography using non-phosphopeptide corresponding to the phosphorylation. |
| ポリ/モノ | ポリクローナル |
| アイソタイプ | IgG |

アプリケーション

The Abpromise guarantee

Abpromise保証は、次のテスト済みアプリケーションにおけるab111574の使用に適用されます

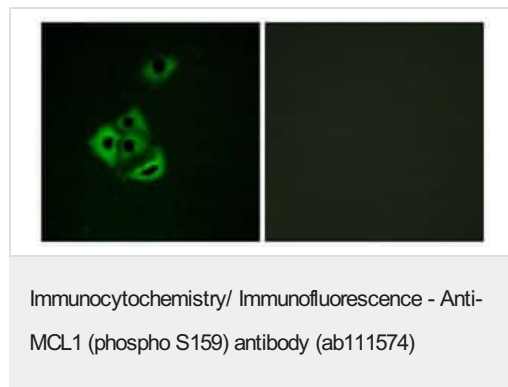
アプリケーションノートには、推奨の開始希釈率がありますが、適切な希釈率につきましてはご検討ください。

| アプリケーション | Abreviews | 特記事項 |
|----------|-----------|----------------|
| ICC/IF | | 1/100 - 1/500. |

ターゲット情報

| | |
|-------|--|
| 機能 | Involved in the regulation of apoptosis versus cell survival, and in the maintenance of viability but not of proliferation. Mediates its effects by interactions with a number of other regulators of apoptosis. Isoform 1 inhibits apoptosis. Isoform 2 promotes apoptosis. |
| 配列類似性 | Belongs to the Bcl-2 family. |
| 翻訳後修飾 | Cleaved by CASP3 during apoptosis. In intact cells cleavage occurs preferentially after Asp-127, yielding a pro-apoptotic 28 kDa C-terminal fragment. Rapidly degraded in the absence of phosphorylation on Thr-163 in the PEST region. Phosphorylated on Thr-163. Treatment with taxol or okadaic acid induces phosphorylation on additional sites. |
| 細胞内局在 | Membrane. Cytoplasm. Mitochondrion. Nucleus > nucleoplasm. Cytoplasmic, associated with mitochondria. |

画像



ab111574, at 1/100 dilution, staining MCL1 in A549 cells by Immunofluorescence, in the presence (right panel) or absence (left panel) of immunising peptide.

Please note: All products are "FOR RESEARCH USE ONLY. NOT FOR USE IN DIAGNOSTIC PROCEDURES"

Our Abpromise to you: Quality guaranteed and expert technical support

- Replacement or refund for products not performing as stated on the datasheet
- Valid for 12 months from date of delivery
- Response to your inquiry within 24 hours
- We provide support in Chinese, English, French, German, Japanese and Spanish
- Extensive multi-media technical resources to help you
- We investigate all quality concerns to ensure our products perform to the highest standards

If the product does not perform as described on this datasheet, we will offer a refund or replacement. For full details of the Abpromise, please visit <https://www.abcam.co.jp/abpromise> or contact our technical team.

Terms and conditions

- Guarantee only valid for products bought direct from Abcam or one of our authorized distributors