

### Anti-mCherry antibody [EPR20579] ab213511

リコンビナント RabMAb<sup>®</sup>

★★★★★ **5 Abreviews** **21 References** **画像数 4**

#### 製品の概要

製品名	Anti-mCherry antibody [EPR20579]
製品の詳細	Rabbit monoclonal [EPR20579] to mCherry
由来種	Rabbit
アプリケーション	<b>適用あり:</b> IP, WB <b>適用なし:</b> Flow Cyt or ICC/IF
種交差性	<b>交差種:</b> Species independent
免疫原	Recombinant fragment. This information is proprietary to Abcam and/or its suppliers.
ポジティブ・コントロール	WB: 293T cells transfected with a His-tagged mCherry whole cell lysate. IP: 293T cells transfected with a His-tagged mCherry whole cell lysate.
特記事項	This product is a recombinant monoclonal antibody, which offers several advantages including: <ul style="list-style-type: none"><li>- High batch-to-batch consistency and reproducibility</li><li>- Improved sensitivity and specificity</li><li>- Long-term security of supply</li><li>- Animal-free production</li></ul> For more information <a href="#">see here</a> . Our RabMAb <sup>®</sup> technology is a patented hybridoma-based technology for making rabbit monoclonal antibodies. For details on our patents, please refer to <a href="#">RabMAb<sup>®</sup> patents</a> .

#### 製品の特性

製品の状態	Liquid
保存方法	Shipped at 4°C. Store at +4°C short term (1-2 weeks). Upon delivery aliquot. Store at -20°C long term. Avoid freeze / thaw cycle.
バッファー	pH: 7.2 Preservative: 0.01% Sodium azide Constituents: 0.05% BSA, 40% Glycerol, PBS
精製度	Protein A purified
ポリ/モノ	モノクローナル
クローン名	EPR20579

## アプリケーション

**The Abpromise guarantee** **Abpromise保証は、次のテスト済みアプリケーションにおけるab213511の使用に適用されます**  
アプリケーションノートには、推奨の開始希釈率がありますが、適切な希釈率につきましてはご検討ください。

アプリケーション	Abreviews	特記事項
IP	★★★★★ (2)	1/20.
WB	★★★★★ (2)	1/1000. Detects a band of approximately 29 kDa (predicted molecular weight: 26 kDa).

## 追加情報

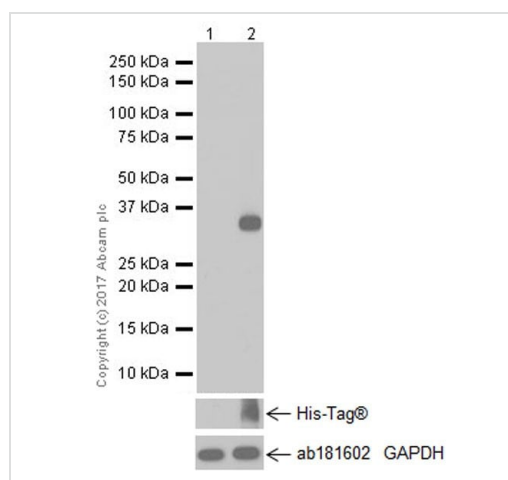
Is unsuitable for Flow Cyt or ICC/IF.

## ターゲット情報

## 関連性

mCherry is derived from proteins originally isolated from *Cnidarians* (jelly fish, sea anemones and corals), and is used as a fluorescent tracer in trasfection and transgenic experiments. The prototype for these fluorescent proteins is Green Fluorescent Protein (GFP), which is a ~27kDa protein isolated originally from the jellyfish *Aequoria victoria*. The mCherry protein is derived from DsRed, a red fluorescent protein related to GFP isolated from so-called disc corals of the genus *Discosoma*.

## 画像



Western blot - Anti-mCherry antibody [EPR20579]  
(ab213511)

**All lanes** : Anti-mCherry antibody [EPR20579] (ab213511) at 1/1000 dilution

**Lane 1** : 293T (human epithelial cell line from embryonic kidney transformed with large T antigen) transfected with an empty expression vector whole cell lysate

**Lane 2** : 293T (human epithelial cell line from embryonic kidney transformed with large T antigen) transfected with a His-tagged mCherry whole cell lysate

Lysates/proteins at 10 µg per lane.

**Secondary**

**All lanes** : Goat Anti-Rabbit IgG H&L (HRP) (**ab97051**) at 1/100000 dilution

Developed using the ECL technique.

**Predicted band size:** 26 kDa

**Observed band size:** 29 kDa

**Exposure time:** 5 seconds

Blocking/Dilution buffer: 5% NFDM/TBST.

Anti-mCherry antibody [EPR20579] (ab213511) at 1/1000 dilution +  
Green fluorescent protein (GFP) at 0.01 µg

### Secondary

Goat Anti-Rabbit IgG H&L (HRP) ([ab97051](#)) at 1/100000 dilution

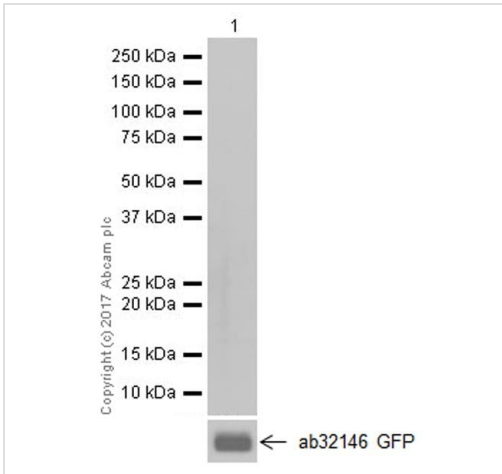
Developed using the ECL technique.

**Predicted band size:** 26 kDa

**Exposure time:** 3 minutes

Blocking/Dilution buffer: 5% NFDM/TBST.

Green fluorescent protein (GFP) contains aa1-238 with His-tag.



Western blot - Anti-mCherry antibody [EPR20579]  
(ab213511)

mCherry was immunoprecipitated from 0.35 mg of 293T (human epithelial cell line from embryonic kidney transformed with large T antigen) transfected with a His-tagged mCherry whole cell lysate with ab213511 at 1/20 dilution. Western blot was performed from the immunoprecipitate using ab213511 at 1/1000 dilution. VeriBlot for IP Detection Reagent (HRP) ([ab131366](#)), was used for detection at 1/10,000 dilution.

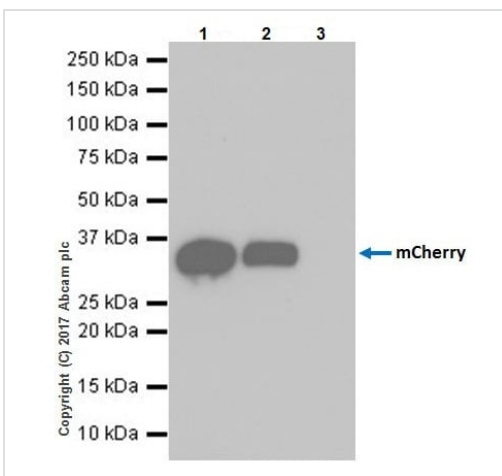
Lane 1: 293T transfected with a His-tagged mCherry whole cell lysate 10 µg (Input).

Lane 2: ab213511 IP in 293T transfected with a His-tagged mCherry whole cell lysate.

Lane 3: Rabbit monoclonal IgG ([ab172730](#)) instead of ab213511 in 293T transfected with a His-tagged mCherry whole cell lysate.


Blocking and dilution buffer and concentration: 5% NFDM/TBST.

Exposure time: 10 seconds.



Immunoprecipitation - Anti-mCherry antibody  
[EPR20579] (ab213511)

Why choose a recombinant antibody?



**Research with confidence**  
Consistent and reproducible results

**Long-term and scalable supply**  
Recombinant technology

**Success from the first experiment**  
Confirmed specificity

**Ethical standards compliant**  
Animal-free production

Anti-mCherry antibody [EPR20579] (ab213511)

**Please note:** All products are "FOR RESEARCH USE ONLY. NOT FOR USE IN DIAGNOSTIC PROCEDURES"

### Our Abpromise to you: Quality guaranteed and expert technical support

---

- Replacement or refund for products not performing as stated on the datasheet
- Valid for 12 months from date of delivery
- Response to your inquiry within 24 hours
- We provide support in Chinese, English, French, German, Japanese and Spanish
- Extensive multi-media technical resources to help you
- We investigate all quality concerns to ensure our products perform to the highest standards

If the product does not perform as described on this datasheet, we will offer a refund or replacement. For full details of the Abpromise, please visit <https://www.abcam.co.jp/abpromise> or contact our technical team.

### Terms and conditions

---

- Guarantee only valid for products bought direct from Abcam or one of our authorized distributors