

Anti-mCherry antibody ab205402

★★★★★ **5 Abreviews** **54 References** 画像数 3

製品の概要

製品名	Anti-mCherry antibody
製品の詳細	Chicken polyclonal to mCherry
由来種	Chicken
アプリケーション	適用あり: WB, ICC/IF
種交差性	交差種: Species independent
免疫原	Recombinant full length protein (His-tag) corresponding to mCherry. The immunogen sequence is from a following reference. Shaner NC et al. Nature Biotechnology 22:1567-1572 (2004).
ポジティブ・コントロール	Lysate of HEK293 cells transfected with pFin-EF1-mCherry vector; HEK293 cells transfected with pFin-EF1-mCherry vector.
特記事項	<p>The Life Science industry has been in the grips of a reproducibility crisis for a number of years. Abcam is leading the way in addressing this with our range of recombinant monoclonal antibodies and knockout edited cell lines for gold-standard validation. Please check that this product meets your needs before purchasing.</p> <p>If you have any questions, special requirements or concerns, please send us an inquiry and/or contact our Support team ahead of purchase. Recommended alternatives for this product can be found below, along with publications, customer reviews and Q&As</p>

製品の特性

製品の状態	Liquid
保存方法	Shipped at 4°C. Store at +4°C. Do Not Freeze.
バッファー	Preservative: 0.0325% Sodium azide
精製度	IgY fraction
特記事項(精製)	Concentrated IgY preparation.
ポリ/モノ	ポリクローナル
アイソタイプ	IgY

アプリケーション

The Abpromise guarantee

Abpromise保証は、 次のテスト済みアプリケーションにおけるab205402の使用に適用されます

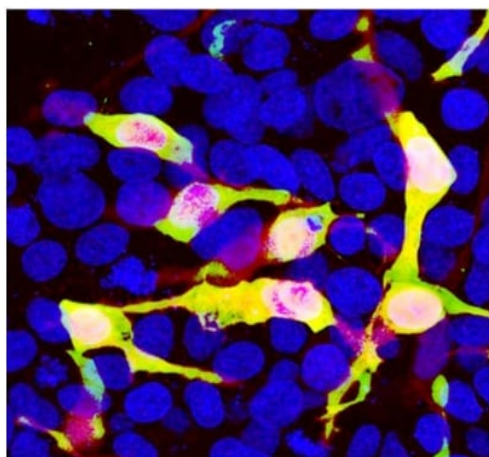
アプリケーションノートには、推奨の開始希釈率がありますが、適切な希釈率につきましてはご確認ください。

アプリケーション	Abreviews	特記事項
WB		1/2000. Predicted molecular weight: 30 kDa.
ICC/IF	★★★★★ (1)	1/1000.

ターゲット情報

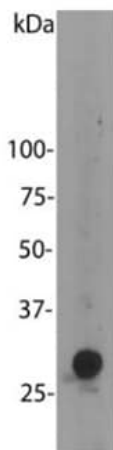
関連性 mCherry is derived from proteins originally isolated from *Cnidarians* (jelly fish, sea anemones and corals), and is used as a fluorescent tracer in trasfection and transgenic experiments. The prototype for these fluorescent proteins is Green Fluorescent Protein (GFP), which is a ~27kDa protein isolated originally from the jellyfish *Aequoria victoria*. The mCherry protein is derived from DsRed, a red fluorescent protein related to GFP isolated from so-called disc corals of the genus *Discosoma*.

画像



Immunofluorescent analysis of HEK293 cells transfected with pFin-EF1-mCherry vector labeling mCherry using ab205402 at 1/1000 dilution (green). Red: mCherry; Blue: blue DNA stain. Note: Most HEK293 cells are not transfected so only the nucleus of these cells can be visualized with a blue DNA stain. Cells which are transfected with mCherry are bright red. Green antibody staining is only seen cells which express Cherry, as expected, and the superimposition of the green and red results in an orange signal.

Immunocytochemistry/ Immunofluorescence - Anti-mCherry antibody (ab205402)

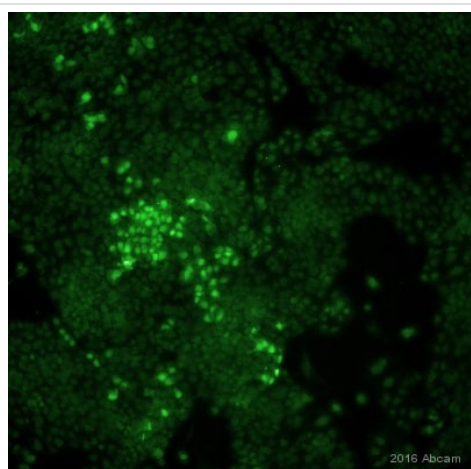


Western blot - Anti-mCherry antibody (ab205402)

Anti-mCherry antibody (ab205402) at 1/2000 dilution + lysate of HEK293 cells transfected with pFin-EF1-mCherry vector

Predicted band size: 30 kDa

Observed band size: 30 kDa



Immunocytochemistry/ Immunofluorescence - Anti-mCherry antibody (ab205402)

This image is courtesy of an anonymous abreview.

Immunocytochemistry/ Immunofluorescence analysis of Human ES cells with mCherry gene reporter labeling mCherry with ab205402 at 1/1000 dilution. Cells were fixed with paraformaldehyde and permeabilized with 0.1% Triton-X. Blocking was carried out with 10% BSA for 1 hour at 4°C, followed by incubation with ab205402 at 1/1000 for 12 hours at 4°C. A polyclonal goat anti-chicken Alexa Fluor® 488 was used as the secondary antibody at 1/100 dilution.

Please note: All products are "FOR RESEARCH USE ONLY. NOT FOR USE IN DIAGNOSTIC PROCEDURES"

Our Abpromise to you: Quality guaranteed and expert technical support

- Replacement or refund for products not performing as stated on the datasheet
- Valid for 12 months from date of delivery
- Response to your inquiry within 24 hours
- We provide support in Chinese, English, French, German, Japanese and Spanish
- Extensive multi-media technical resources to help you
- We investigate all quality concerns to ensure our products perform to the highest standards

If the product does not perform as described on this datasheet, we will offer a refund or replacement. For full details of the Abpromise, please visit <https://www.abcam.co.jp/abpromise> or contact our technical team.

Terms and conditions

- Guarantee only valid for products bought direct from Abcam or one of our authorized distributors