

Anti-mCherry antibody [1C51] ab125096

★★★★★ [15 Abreviews](#) [175 References](#) [画像数 5](#)

製品の概要

製品名	Anti-mCherry antibody [1C51]
製品の詳細	Mouse monoclonal [1C51] to mCherry
由来種	Mouse
アプリケーション	適用あり: WB, ICC/IF, IHC-P
種交差性	交差種: Species independent
免疫原	Recombinant full length protein corresponding to mCherry.
ポジティブ・コントロール	IHC-P: mCherry-transfected monkey brain tissue, Drosophila melanogaster eye imaginal discs and smooth muscle cells in rat bladder tissue. WB: HEK-293 cells transfected with mCherry-HA construct and mCherry recombinant protein. ICC/IF: mCherry-transfected HEK-293T cells.
特記事項	<p>The Life Science industry has been in the grips of a reproducibility crisis for a number of years. Abcam is leading the way in addressing this with our range of recombinant monoclonal antibodies and knockout edited cell lines for gold-standard validation. Please check that this product meets your needs before purchasing.</p> <p>If you have any questions, special requirements or concerns, please send us an inquiry and/or contact our Support team ahead of purchase. Recommended alternatives for this product can be found below, along with publications, customer reviews and Q&As</p>

製品の特性

製品の状態	Liquid
保存方法	Shipped at 4°C. Store at +4°C short term (1-2 weeks). Upon delivery aliquot. Store at -20°C long term.
バッファー	Preservative: 0.03% Sodium azide Constituents: 50% Glycerol, PBS
精製度	Protein G purified
ポリ/モノ	モノクローナル
クローン名	1C51
アイソタイプ	IgG2a

アプリケーション

The Abpromise guarantee

Abpromise保証は、次のテスト済みアプリケーションにおけるab125096の使用に適用されます

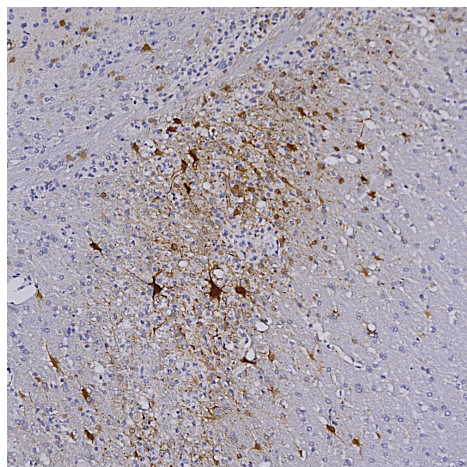
アプリケーションノートには、推奨の開始希釈率がありますが、適切な希釈率につきましてはご検討ください。

アプリケーション	Abreviews	特記事項
WB	★★★★★ (2)	1/2000. Detects a band of approximately 28 kDa.
ICC/IF	★★★★★ (3)	1/500.
IHC-P	★★★★★ (4)	1/2000.

ターゲット情報

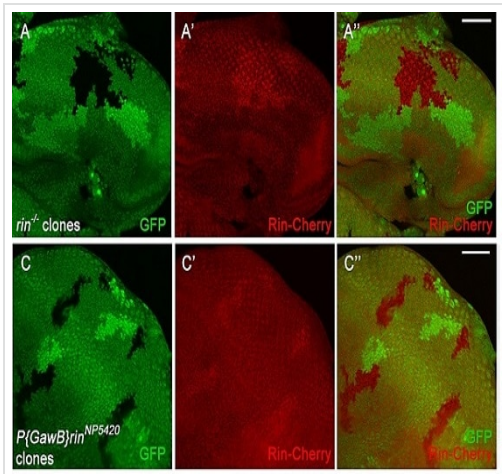
関連性 mCherry is derived from proteins originally isolated from *Cnidarians* (jelly fish, sea anemones and corals), and is used as a fluorescent tracer in trasfection and transgenic experiments. The prototype for these fluorescent proteins is Green Fluorescent Protein (GFP), which is a ~27kDa protein isolated originally from the jellyfish *Aequoria victoria*. The mCherry protein is derived from DsRed, a red fluorescent protein related to GFP isolated from so-called disc corals of the genus *Discosoma*.

画像



Immunohistochemistry (Formalin/PFA-fixed paraffin-embedded sections) - Anti-mCherry antibody [1C51] (ab125096)

Chromogenic immunostaining of formalin fixed paraffin embedded mCherry transfected monkey brain with mouse mAb to mCherry, dilution 1/2000, detected in DAB (brown) following the ImmPress method. Hematoxylin (blue) was used as the counterstain. ab125096 specifically detected the soma and axons of mCherry positive neurons in the cortex, as expected for this model.

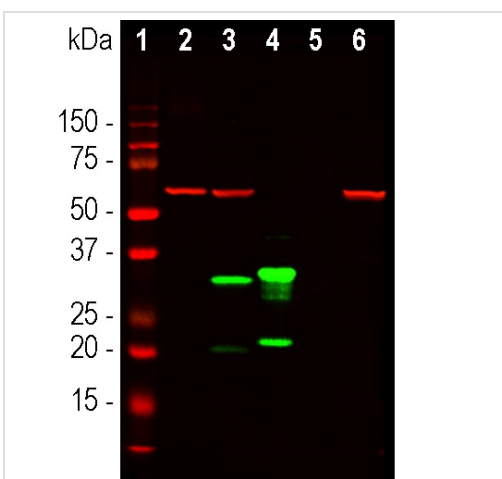


Immunohistochemistry (Formalin/PFA-fixed paraffin-embedded sections) - Anti-mCherry antibody [1C51] (ab125096)

Baumgartner R et al. The RNA-binding proteins FMR1, rasputin and caprin act together with the UBA protein lingerer to restrict tissue growth in *Drosophila melanogaster*. PLoS Genet 9:e1003598 (2013).

4% paraformaldehyde fixed (at RT for 20 min and blocked with 2% NDS in 0.3% PBT) *Drosophila melanogaster* eye imaginal discs stained for mCherry (Red) using ab125096.

Analysis of *rin* hypomorphic alleles and the genomic rescue transgene *Grin^{Cherry}*. (A–C'') Negatively marked 72 h old *rin*² (A, A''), (C, C'') mutant clones (induced with the FLP/FRT system) in eye imaginal discs of third instar larvae. Rin-Cherry levels expressed from the *Grin^{Cherry}* are autonomously increased in the *rin* mutant clones (A' and C'). The scale bar represents 50 μm.



Western blot - Anti-mCherry antibody [1C51] (ab125096)

All lanes : Anti-mCherry antibody [1C51] (ab125096) at 1/1000 dilution

Lane 1 : Protein standard

Lane 2 : HEK-293 (human epithelial cell line from embryonic kidney) cell lysate

Lane 3 : HEK-293 cells transfected with mCherry-HA construct

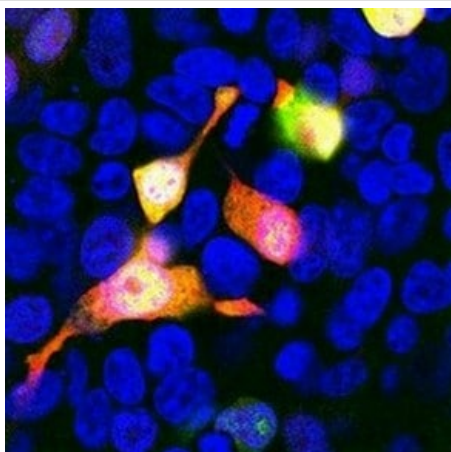
Lane 4 : mCherry recombinant protein

Lane 5 : GFP recombinant protein

Lane 6 : HEK-293 transfected with GFP construct.

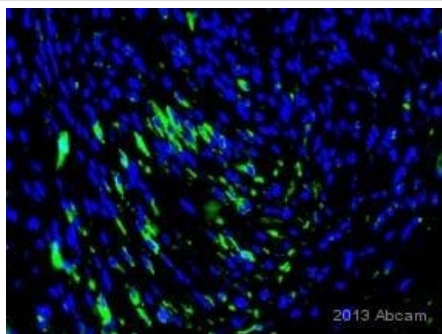
Major band at about 30kDa corresponds to mCherry protein.

MCA-1C51 antibody does not react with GFP protein. The same blot was simultaneously probed with chicken pAb to HSP60, dilution 1:5,000 in red which reveals band at 60kDa seen only in cell lysates.



Immunocytochemistry/ Immunofluorescence - Anti-mCherry antibody [1C51] (ab125096)

mCherry-transfected HEK-293 (Human epithelial cell line from embryonic kidney transformed with large T antigen) cells labeling mCherry using ab125096 followed with a green secondary. DAPI was used to stain nuclei in blue. Cells are visualized using a confocal microscope. Transfected cells appear in yellow/orange colour.



Immunohistochemistry (Formalin/PFA-fixed paraffin-embedded sections) - Anti-mCherry antibody [1C51] (ab125096)

Image courtesy of an anonymous Abreview

ab125096 staining mCherry in smooth muscle cells in rat bladder by Immunohistochemistry (Formalin/PFA-fixed paraffin-embedded sections).

Tissue was fixed with 10% buffered formalin and blocked with 5000 ug/ml BSA for 30 minutes at 22°C. Samples were incubated with primary antibody (1/100 in BSA) for 1 hour at 22°C. An Alexa Fluor® 488-conjugated Goat polyclonal anti mouse (1/400) was used as the secondary antibody.

Please note: All products are "FOR RESEARCH USE ONLY. NOT FOR USE IN DIAGNOSTIC PROCEDURES"

Our Abpromise to you: Quality guaranteed and expert technical support

- Replacement or refund for products not performing as stated on the datasheet
- Valid for 12 months from date of delivery
- Response to your inquiry within 24 hours
- We provide support in Chinese, English, French, German, Japanese and Spanish
- Extensive multi-media technical resources to help you
- We investigate all quality concerns to ensure our products perform to the highest standards

If the product does not perform as described on this datasheet, we will offer a refund or replacement. For full details of the Abpromise, please visit <https://www.abcam.co.jp/abpromise> or contact our technical team.

Terms and conditions

- Guarantee only valid for products bought direct from Abcam or one of our authorized distributors