

### Anti-MBD3 antibody [EPR9913] - ChIP Grade ab157464

KO 評価済 リコンビナント RabMAb

★★★★★ 9 Abreviews 18 References 画像数 8

#### 製品の概要

製品名	Anti-MBD3 antibody [EPR9913] - ChIP Grade
製品の詳細	Rabbit monoclonal [EPR9913] to MBD3 - ChIP Grade
由来種	Rabbit
アプリケーション	<b>適用あり:</b> Flow Cyt (Intra), IP, WB, ICC/IF, ChIP <b>適用なし:</b> IHC-P
種交差性	<b>交差種:</b> Mouse, Rat, Cow, Human
免疫原	Synthetic peptide. This information is proprietary to Abcam and/or its suppliers.
ポジティブ・コントロール	HeLa, 293T, fetal brain and Y79 lysates; HeLa cells; Permeabilized 293T cells.
特記事項	This product is a recombinant monoclonal antibody, which offers several advantages including: <ul style="list-style-type: none"> <li>- High batch-to-batch consistency and reproducibility</li> <li>- Improved sensitivity and specificity</li> <li>- Long-term security of supply</li> <li>- Animal-free production</li> </ul> For more information <a href="#">see here</a> . Our RabMAb® technology is a patented hybridoma-based technology for making rabbit monoclonal antibodies. For details on our patents, please refer to <a href="#">RabMAb® patents</a> .

#### 製品の特性

製品の状態	Liquid
保存方法	Shipped at 4°C. Store at -20°C.
バッファー	pH: 7.2 Preservative: 0.01% Sodium azide Constituents: 9% PBS, 40% Glycerol (glycerin, glycerine), 0.05% BSA, 50% Tissue culture supernatant
精製度	Tissue culture supernatant
ポリ/モノ	モノクローナル
クローン名	EPR9913
アイソタイプ	IgG

## アプリケーション

**The Abpromise guarantee** Abpromise保証は、次のテスト済みアプリケーションにおけるab157464の使用に適用されます  
アプリケーションノートには、推奨の開始希釈率がありますが、適切な希釈率につきましてはご確認ください。

アプリケーション	Abreviews	特記事項
Flow Cyt (Intra)		1/10 - 1/100. <b>ab172730</b> - Rabbit monoclonal IgG, is suitable for use as an isotype control with this antibody.
IP	★★★★★ (1)	Use at an assay dependent concentration.
WB	★★★★★ (4)	1/1000 - 1/5000. Predicted molecular weight: 33 kDa.
ICC/IF	★★★★★ (2)	1/100 - 1/1000.
ChIP	★★★★★ (1)	Use at an assay dependent concentration.

**追加情報** Is unsuitable for IHC-P.

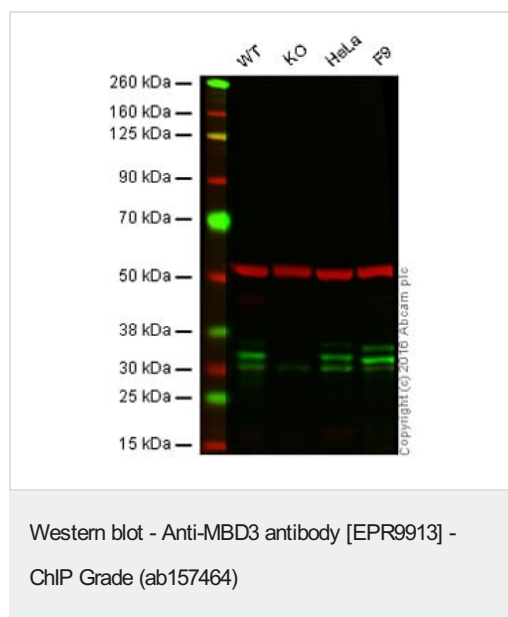
## ターゲット情報

**機能** Does not bind DNA by itself. Recruits histone deacetylases and DNA methyltransferases. Acts as transcriptional repressor and plays a role in gene silencing.

**配列類似性** Contains 1 MBD (methyl-CpG-binding) domain.

**細胞内局在** Nucleus. Nuclear, in discrete foci.

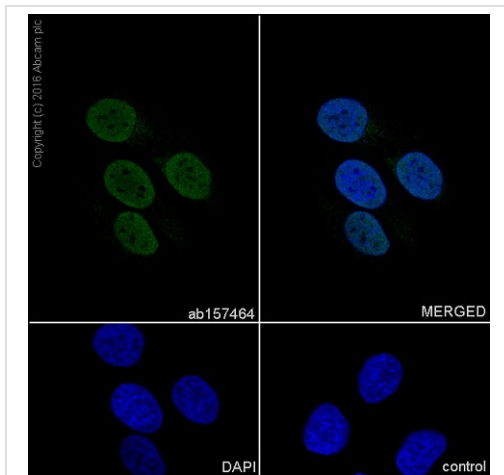
## 画像



**Lane 1:** Wild-type HAP1 cell lysate (20 µg)  
**Lane 2:** ProteinX knockout HAP1 cell lysate (20 µg)  
**Lane 3:** Wild-type HAP1 cell lysate (20 µg)  
**Lane 4:** ProteinX knockout HAP1 cell lysate (20 µg)  
**Lanes 1 - 4:** Merged signal (red and green). Green - ab157464 observed at 33 kDa. Red - loading control, **ab8245**, observed at 37 kDa.

ab157464 was shown to recognize MBD3 when MBD3 knockout samples were used, along with additional cross-reactive bands. Wild-type and MBD3 knockout samples were subjected to SDS-PAGE. ab157464 and **ab8245** (loading control to GAPDH) were diluted 1/1000 and 1/10000 respectively and incubated overnight at 4°C. Blots were developed with Goat anti-Rabbit IgG H&L (IRDye® 800CW) preadsorbed (**ab216773**) and Goat anti-Mouse IgG H&L

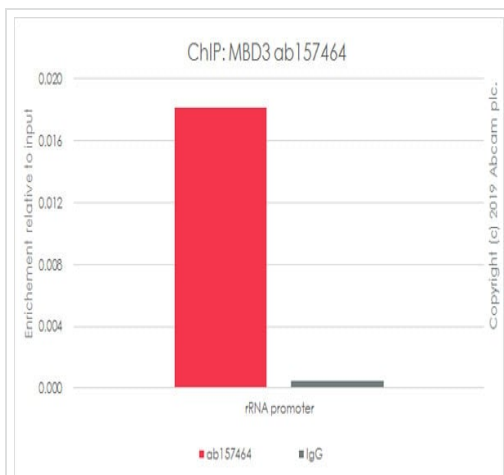
(IRDye® 680RD) preadsorbed (**ab216776**) secondary antibodies at 1/10000 dilution for 1 hour at room temperature before imaging.



Immunocytochemistry/ Immunofluorescence - Anti-MBD3 antibody [EPR9913] - ChIP Grade (ab157464)

Immunocytochemistry/Immunofluorescence analysis of HeLa (human cervix adenocarcinoma) labelling MBD3 with purified ab157464 at 1/1000. Cells were fixed with 4% PFA and permeabilized with 0.1% Triton X-100. An Alexa Fluor® 488-conjugated goat anti-rabbit IgG (1/1000) was used as the secondary antibody (Ab150077). Nuclei counterstained with DAPI (blue).

Control: PBS only



ChIP - Anti-MBD3 antibody [EPR9913] - ChIP Grade (ab157464)

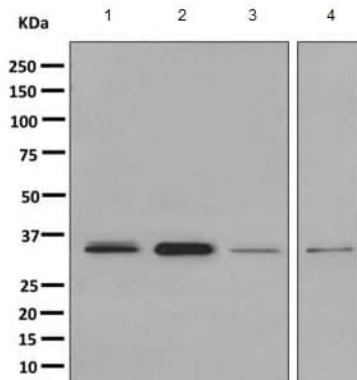
Chromatin was prepared from HeLa cells according to the Abcam Dual X-ChIP protocol\*. Cells were fixed with EGS for 30 minutes, then formaldehyde for 10 minutes.

The ChIP was performed with 25 µg of chromatin, 5 µg of ab157464 (red), and 20 µl of Protein A/G sepharose beads. 5 µg of rabbit normal IgG was added to the beads control (gray). The immunoprecipitated DNA was quantified by real time PCR (Sybr green approach).

Primers and probes are located in the first kb of the transcribed region.

\*[http://www.abcam.com/resources?](http://www.abcam.com/resources?keywords=X%20ChIP%20protocol)

keywords=X%20ChIP%20protocol



Western blot - Anti-MBD3 antibody [EPR9913] - ChIP Grade (ab157464)

**All lanes :** Anti-MBD3 antibody [EPR9913] - ChIP Grade (ab157464) at 1/1000 dilution

**Lane 1 :** HeLa cell lysate

**Lane 2 :** 293T cell lysate

**Lane 3 :** Fetal brain lysate

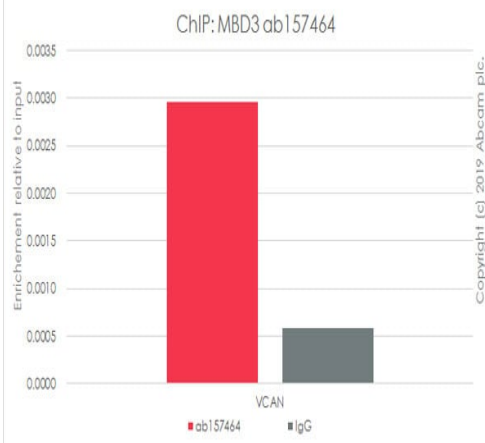
**Lane 4 :** Y79 cell lysate

Lysates/proteins at 10 µg per lane.

## Secondary

**All lanes :** HRP labelled goat anti-rabbit at 1/2000 dilution

**Predicted band size:** 33 kDa



ChIP - Anti-MBD3 antibody [EPR9913] - ChIP Grade (ab157464)

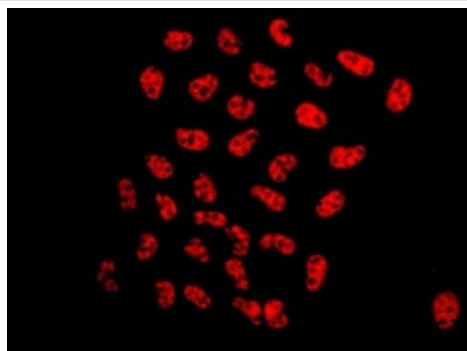
Chromatin was prepared from NIH/3T3 cells according to the Abcam Dual X-ChIP protocol\*. Cells were fixed with EGS for 30 minutes, then formaldehyde for 10 minutes.

The ChIP was performed with 25 µg of chromatin, 5 µg of ab157464 (red), and 20 µl of Protein A/G sepharose beads. 5 µg of rabbit normal IgG was added to the beads control (gray). The immunoprecipitated DNA was quantified by real time PCR (Sybr green approach).

Primers and probes are located in the first kb of the transcribed region.

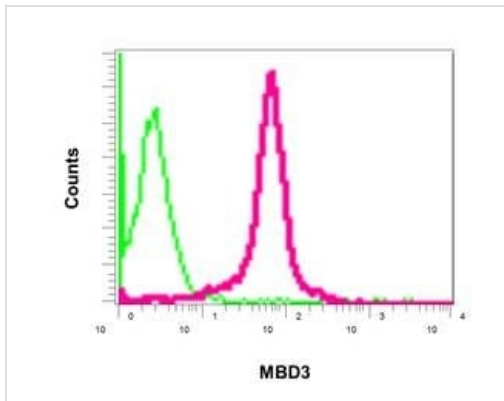
\*[http://www.abcam.com/resources?](http://www.abcam.com/resources?keywords=X%20ChIP%20protocol)

keywords=X%20ChIP%20protocol



Immunocytochemistry/ Immunofluorescence - Anti-MBD3 antibody [EPR9913] - ChIP Grade (ab157464)





Immunofluorescent analysis of HeLa cells labeling MBD3 with ab157464 at 1/100 dilution.



Intracellular flow cytometric analysis of permeabilized 293T cells labeling MBD3 with ab157464 at 1/10 dilution (red) compared to a rabbit IgG negative control (green).

Flow Cytometry (Intracellular) - Anti-MBD3 antibody  
[EPR9913] - ChIP Grade (ab157464)

Why choose a recombinant antibody?

 <p><b>Research with confidence</b> Consistent and reproducible results</p>	 <p><b>Long-term and scalable supply</b> Recombinant technology</p>
 <p><b>Success from the first experiment</b> Confirmed specificity</p>	 <p><b>Ethical standards compliant</b> Animal-free production</p>

Anti-MBD3 antibody [EPR9913] - ChIP Grade (ab157464)

**Please note:** All products are "FOR RESEARCH USE ONLY. NOT FOR USE IN DIAGNOSTIC PROCEDURES"

### Our Abpromise to you: Quality guaranteed and expert technical support

- Replacement or refund for products not performing as stated on the datasheet
- Valid for 12 months from date of delivery
- Response to your inquiry within 24 hours
- We provide support in Chinese, English, French, German, Japanese and Spanish
- Extensive multi-media technical resources to help you
- We investigate all quality concerns to ensure our products perform to the highest standards

If the product does not perform as described on this datasheet, we will offer a refund or replacement. For full details of the Abpromise, please visit <https://www.abcam.co.jp/abpromise> or contact our technical team.

## Terms and conditions

---

- Guarantee only valid for products bought direct from Abcam or one of our authorized distributors