

Anti-Matriptase 2 antibody - Cytoplasmic domain ab56180

★★★★★ [2 Abreviews](#) [6 References](#) [画像数 1](#)

製品の概要

製品名	Anti-Matriptase 2 antibody - Cytoplasmic domain
製品の詳細	Rabbit polyclonal to Matriptase 2 - Cytoplasmic domain
由来種	Rabbit
特異性	ab56180 reacts with Matriptase 2 (TMPRSS6) and does not react with the other TMPRSSs. ab56180 recognizes all of the listed forms of Matriptase 2.
アプリケーション	適用あり: WB
種交差性	交差種: Human
免疫原	Synthetic peptide based on the aminoterminal end (cytoplasmic domain) of Matriptase 2 (Human).
特記事項	<p>The Life Science industry has been in the grips of a reproducibility crisis for a number of years. Abcam is leading the way in addressing this with our range of recombinant monoclonal antibodies and knockout edited cell lines for gold-standard validation. Please check that this product meets your needs before purchasing.</p> <p>If you have any questions, special requirements or concerns, please send us an inquiry and/or contact our Support team ahead of purchase. Recommended alternatives for this product can be found below, along with publications, customer reviews and Q&As</p>

製品の特性

製品の状態	Liquid
保存方法	Shipped at 4°C. Store at -20°C. Stable for 12 months at -20°C.
バッファー	<p>pH: 7.40</p> <p>Preservative: 0.05% Sodium azide</p> <p>Constituents: 50% Glycerol, 2.9% Sodium chloride, PBS</p>
精製度	Immunogen affinity purified
ポリ/モノ	ポリクローナル
アイソタイプ	IgG

アプリケーション

The Abpromise guarantee

Abpromise保証は、 次のテスト済みアプリケーションにおけるab56180の使用に適用されます

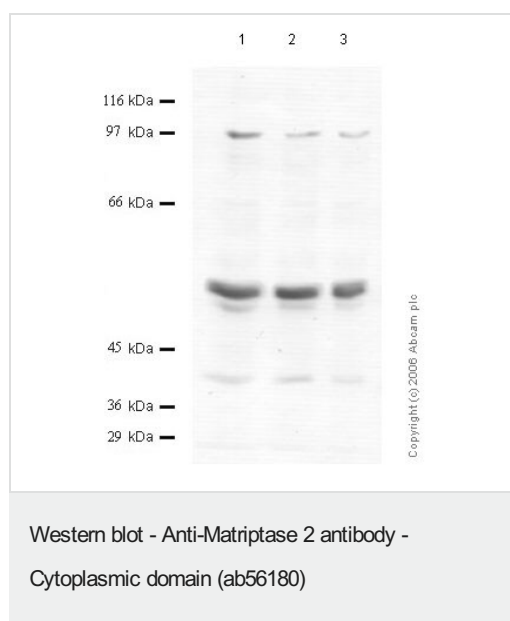
アプリケーションノートには、推奨の開始希釈率がありますが、適切な希釈率につきましてはご確認ください。

アプリケーション	Abreviews	特記事項
WB	★★★★★ (1)	1/1000 - 1/5000. Predicted molecular weight: 89 kDa.

ターゲット情報

機能	Serine protease which hydrolyzes a range of proteins including type I collagen, fibronectin and fibrinogen. Can also activate urokinase-type plasminogen activator with low efficiency. May play a specialized role in matrix remodeling processes in liver. Required to sense iron deficiency. Overexpression suppresses activation of the HAMP promoter.
組織特異性	Liver specific.
関連疾患	Defects in TMPRSS6 are the cause of iron-refractory iron deficiency anemia (IRIDA) [MIM:206200]; also known as hypochromic microcytic anemia with defect in iron metabolism or hereditary iron-handling disorder or pseudo-iron-deficiency anemia. Key features include congenital hypochromic microcytic anemia, very low mean corpuscular erythrocyte volume, low transferrin saturation, abnormal iron absorption characterized by no hematologic improvement following treatment with oral iron, and abnormal iron utilization characterized by a sluggish, incomplete response to parenteral iron.
配列類似性	Belongs to the peptidase S1 family. Contains 2 CUB domains. Contains 3 LDL-receptor class A domains. Contains 1 peptidase S1 domain.
ドメイン	Cytoplasmic domain mediates HAMP suppression via proximal promoter element(s).
細胞内局在	Cell membrane.

画像



All lanes : Anti-Matriptase 2 antibody - Cytoplasmic domain
(ab56180) at 1/1000 dilution

All lanes : Cell media from human embryonic kidney HEK293 cells

Predicted band size: 89 kDa

Our Abpromise to you: Quality guaranteed and expert technical support

- Replacement or refund for products not performing as stated on the datasheet
- Valid for 12 months from date of delivery
- Response to your inquiry within 24 hours

- We provide support in Chinese, English, French, German, Japanese and Spanish
- Extensive multi-media technical resources to help you
- We investigate all quality concerns to ensure our products perform to the highest standards

If the product does not perform as described on this datasheet, we will offer a refund or replacement. For full details of the Abpromise, please visit <https://www.abcam.co.jp/abpromise> or contact our technical team.

Terms and conditions

- Guarantee only valid for products bought direct from Abcam or one of our authorized distributors