

Anti-MAT1A antibody [EPR7938] ab129176

リコンビナント RabMAb

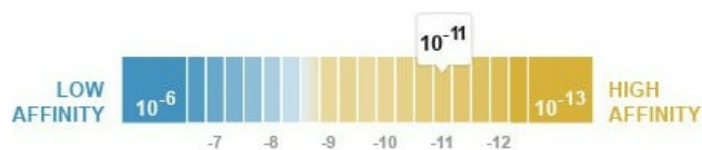
4 References [画像数 5](#)

製品の概要

製品名	Anti-MAT1A antibody [EPR7938]
製品の詳細	Rabbit monoclonal [EPR7938] to MAT1A
由来種	Rabbit
アプリケーション	適用あり: WB, IP 適用なし: Flow Cyt
種交差性	交差種: Mouse, Rat, Human
免疫原	Synthetic peptide within Human MAT1A aa 50-150. The exact sequence is proprietary.
ポジティブ・コントロール	WB: Human fetal liver, Mouse liver, and Rat liver lysates. IP: 293T cells.
特記事項	This product is a recombinant monoclonal antibody, which offers several advantages including: <ul style="list-style-type: none">- High batch-to-batch consistency and reproducibility- Improved sensitivity and specificity- Long-term security of supply- Animal-free production For more information see here . Our RabMAb [®] technology is a patented hybridoma-based technology for making rabbit monoclonal antibodies. For details on our patents, please refer to RabMAb[®] patents .

製品の特性

製品の状態	Liquid
保存方法	Shipped at 4°C. Store at +4°C short term (1-2 weeks). Upon delivery aliquot. Store at -20°C long term. Avoid freeze / thaw cycle.
解離定数 (K _D 値)	K _D = 1.22 x 10 ⁻¹¹ M



[Learn more about K_D](#)

バッファー	pH: 7.2 Preservative: 0.01% Sodium azide
-------	---

	Constituents: 59% PBS, 40% Glycerol, 0.05% BSA
精製度	Protein A purified
ポリ/モノ	モノクローナル
クローン名	EPR7938
アイソタイプ	IgG

アプリケーション

The Abpromise guarantee **Abpromise保証は、次のテスト済みアプリケーションにおけるab129176の使用に適用されます**
 アプリケーションノートには、推奨の開始希釈率がありますが、適切な希釈率につきましてはご検討ください。

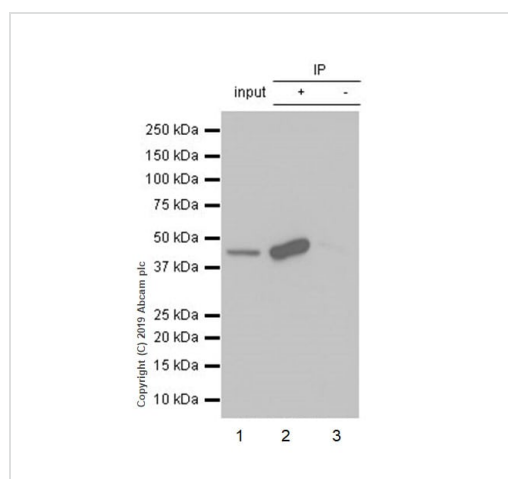
アプリケーション	Abreviews	特記事項
WB		1/1000 - 1/10000. Detects a band of approximately 44 kDa (predicted molecular weight: 44 kDa).
IP		1/10 - 1/100.

追加情報 Is unsuitable for Flow Cyt.

ターゲット情報

関連性 MAT1A catalyzes a two-step reaction that involves the transfer of the adenosyl moiety of ATP to methionine to form S-adenosylmethionine and triphosphosphate, which is subsequently cleaved to PPI and Pi. S-adenosylmethionine is the source of methyl groups for most biological methylations. Mutations in this gene are associated with methionine adenosyltransferase deficiency.

画像



Immunoprecipitation - Anti-MAT1A antibody
 [EPR7938] (ab129176)

ab129176 (Purified) at 1:40 dilution (2 µg) immunoprecipitating MAT1A in 293T whole cell lysate.

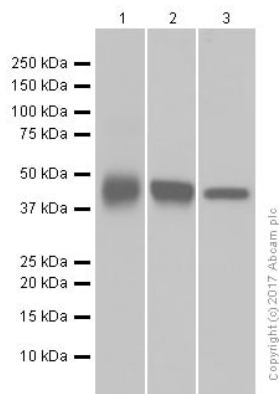
Lane 1 (input): 293T (Human embryonic kidney epithelial cell) whole cell lysate 10 µg

Lane 2 (+): ab129176 & 293T whole cell lysate

Lane 3 (-): Rabbit monoclonal IgG (**ab172730**) instead of ab129176 in 293T whole cell lysate

For western blotting, VeriBlot for IP Detection Reagent (HRP) (**ab131366**) was used at 1:1000 dilution.

Blocking and diluting buffer: 5% NFD/MTBST.



Western blot - Anti-MAT1A antibody [EPR7938]
(ab129176)

All lanes : Anti-MAT1A antibody [EPR7938] (ab129176) at 1/10000 dilution (Purified)

Lane 1 : Human fetal liver lysates

Lane 2 : Mouse liver lysates

Lane 3 : Rat liver lysates

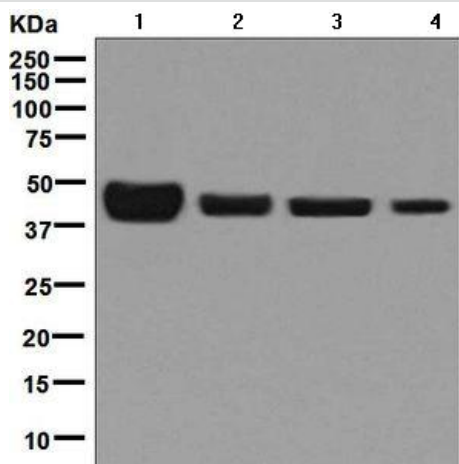
Lysates/proteins at 20 µg per lane.

Secondary

All lanes : Goat Anti-Rabbit IgG (HRP) with minimal cross-reactivity with human IgG at 1/2000 dilution

Predicted band size: 44 kDa

Observed band size: 44 kDa



Western blot - Anti-MAT1A antibody [EPR7938]
(ab129176)

All lanes : Anti-MAT1A antibody [EPR7938] (ab129176) at 1/1000 dilution (unpurified)

Lane 1 : Fetal liver lysate

Lane 2 : HepG2 cell lysate

Lane 3 : Jurkat cell lysate

Lane 4 : 293T cell lysate

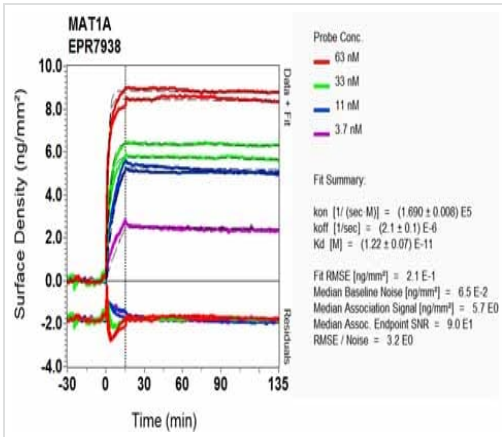
Lysates/proteins at 10 µg per lane.

Secondary

All lanes : Goat anti-rabbit HRP conjugated antibody at 1/2000 dilution

Predicted band size: 44 kDa

Observed band size: 44 kDa



SPR Scanning - Anti-MAT1A antibody [EPR7938]
(ab129176)

Equilibrium dissociation constant (K_D)

Learn more about K_D

[Click here to learn more about \$K_D\$](#)

Why choose a recombinant antibody?

Research with confidence
Consistent and reproducible results

Long-term and scalable supply
Recombinant technology

Success from the first experiment
Confirmed specificity

Ethical standards compliant
Animal-free production

Anti-MAT1A antibody [EPR7938] (ab129176)

Please note: All products are "FOR RESEARCH USE ONLY. NOT FOR USE IN DIAGNOSTIC PROCEDURES"

Our Abpromise to you: Quality guaranteed and expert technical support

- Replacement or refund for products not performing as stated on the datasheet
- Valid for 12 months from date of delivery
- Response to your inquiry within 24 hours

- We provide support in Chinese, English, French, German, Japanese and Spanish
- Extensive multi-media technical resources to help you
- We investigate all quality concerns to ensure our products perform to the highest standards

If the product does not perform as described on this datasheet, we will offer a refund or replacement. For full details of the Abpromise, please visit <https://www.abcam.co.jp/abpromise> or contact our technical team.

Terms and conditions

- Guarantee only valid for products bought direct from Abcam or one of our authorized distributors