


Anti-MAP1LC3A antibody [EP1983Y] - Autophagosome Marker ab52768

リコンビナント RabMAb

13 References [画像数 6](#)

製品の概要

製品名	Anti-MAP1LC3A antibody [EP1983Y] - Autophagosome Marker
製品の詳細	Rabbit monoclonal [EP1983Y] to MAP1LC3A - Autophagosome Marker
由来種	Rabbit
アプリケーション	適用あり: Flow Cyt (Intra), WB, IHC-P, ICC/IF
種交差性	交差種: Rat, Human 交差が予測される動物種: Mouse 
免疫原	Synthetic peptide within Human MAP1LC3A aa 100 to the C-terminus (C terminal). The exact sequence is proprietary. Database link: Q9H492
ポジティブ・コントロール	WB: Hela cell lysate IHC-P: Human breast carcinoma tissue
特記事項	This product is a recombinant monoclonal antibody, which offers several advantages including: <ul style="list-style-type: none">- High batch-to-batch consistency and reproducibility- Improved sensitivity and specificity- Long-term security of supply- Animal-free production For more information see here . Our RabMAb [®] technology is a patented hybridoma-based technology for making rabbit monoclonal antibodies. For details on our patents, please refer to RabMAb[®] patents .

製品の特性

製品の状態	Liquid
保存方法	Shipped at 4°C. Upon delivery aliquot and store at -20°C. Avoid freeze / thaw cycles.
バッファー	pH: 7.20 Preservative: 0.01% Sodium azide Constituents: 9% PBS, 40% Glycerol (glycerin, glycerine), 0.05% BSA, 50% Tissue culture supernatant
精製度	Protein A purified

ポリ/モノ	モノクローナル
クローン名	EP1983Y
アイソタイプ	IgG

アプリケーション

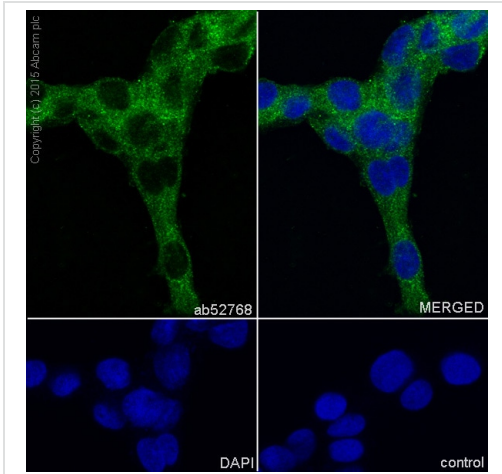
The Abpromise guarantee **Abpromise保証は、次のテスト済みアプリケーションにおけるab52768の使用に適用されず**
 アプリケーションノートには、推奨の開始希釈率がありますが、適切な希釈率につきましてはご検討ください。

アプリケーション	Abreviews	特記事項
Flow Cyt (Intra)		1/40 - 1/1000. ab172730 - Rabbit monoclonal IgG, is suitable for use as an isotype control with this antibody.
WB		1/5000 - 1/10000. Detects a band of approximately 16 kDa (predicted molecular weight: 14 kDa).
IHC-P		Use at an assay dependent concentration. Perform heat mediated antigen retrieval with citrate buffer pH 6 before commencing with IHC staining protocol.
ICC/IF		1/100 - 1/500.

ターゲット情報

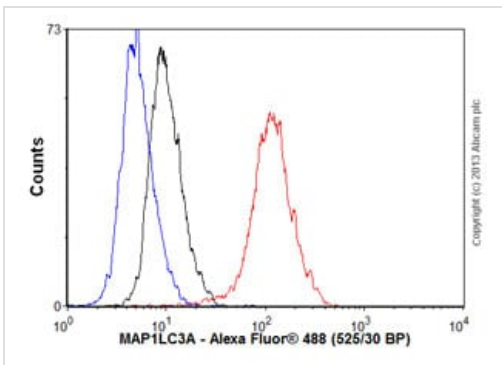
機能	Probably involved in formation of autophagosomal vacuoles (autophagosomes).
組織特異性	Most abundant in heart, brain, liver, skeletal muscle and testis but absent in thymus and peripheral blood leukocytes.
配列類似性	Belongs to the MAP1 LC3 family.
翻訳後修飾	The precursor molecule is cleaved by APG4B/ATG4B to form the cytosolic form, LC3-I. This is activated by APG7L/ATG7, transferred to ATG3 and conjugated to phospholipid to form the membrane-bound form, LC3-II.
細胞内局在	Cytoplasm > cytoskeleton. Endomembrane system. Cytoplasmic vesicle > autophagosome membrane. LC3-II binds to the autophagic membranes.

画像



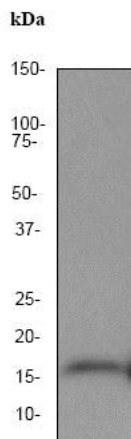
Immunocytochemistry/ Immunofluorescence - Anti-MAP1LC3A antibody [EP1983Y] - Autophagosome Marker (ab52768)

Immunocytochemistry/Immunofluorescence analysis of C6 (rat glioma) labelling MAP1LC3A with purified ab52768 at 1/500. Cells were fixed with 100% methanol. An Alexa Fluor[®] 488-conjugated goat anti-rabbit IgG (1/1000) was used as the secondary antibody (Ab150077). Nuclei counterstained with DAPI (blue).



Flow Cytometry (Intracellular) - Anti-MAP1LC3A antibody [EP1983Y] - Autophagosome Marker (ab52768)

Overlay histogram showing SHSY-5Y cells stained with ab52768 (red line). The cells were fixed with 4% paraformaldehyde (10 min) and then permeabilized with 0.1% PBS-Tween for 20 min. The cells were then incubated in 1x PBS / 10% normal goat serum / 0.3M glycine to block non-specific protein-protein interactions followed by the antibody (ab52768, 1/1000 dilution) for 30 min at 22°C. The secondary antibody used was Alexa Fluor[®] 488 goat anti-rabbit IgG (H&L) (**ab150077**) at 1/2000 dilution for 30 min at 22°C. Isotype control antibody (black line) was rabbit IgG (monoclonal) (0.1µg/1x10⁶ cells) used under the same conditions. Unlabelled sample (blue line) was also used as a control. Acquisition of >5,000 events were collected using a 20mW Argon ion laser (488nm) and 525/30 bandpass filter. This antibody gave a positive signal in SHSY-5Y cells fixed with 80% methanol (5 min)/permeabilized with 0.1% PBS-Tween for 20 min used under the same conditions.



Western blot - Anti-MAP1LC3A antibody [EP1983Y]
- Autophagosome Marker (ab52768)

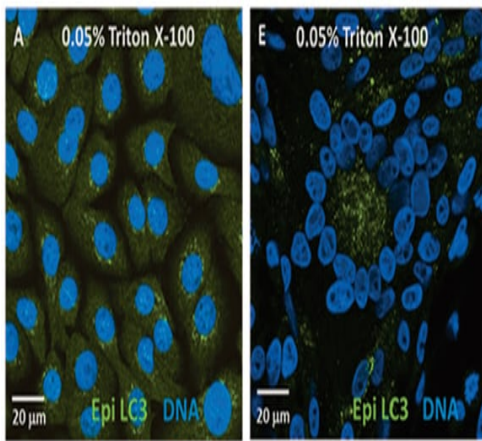
Anti-MAP1LC3A antibody [EP1983Y] - Autophagosome Marker
(ab52768) at 1/10000 dilution + HeLa cell lysate at 10 µg

Secondary

Goat anti-rabbit HRP labeled at 1/2000 dilution

Predicted band size: 14 kDa

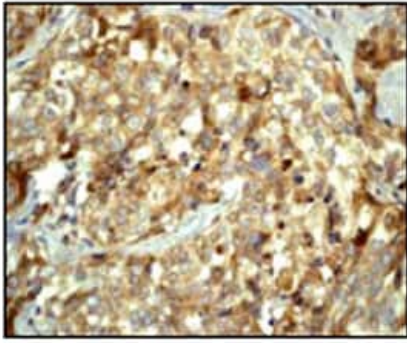
Observed band size: 16 kDa



Immunocytochemistry/Immunofluorescence analysis of human
keratinocytes (panel A) and VZV-infected melanoma cells (panel
E) labelling MAP1LC3A with ab52768.

Immunocytochemistry/ Immunofluorescence - Anti-
MAP1LC3A antibody [EP1983Y] - Autophagosome
Marker (ab52768)

Image from Buckingham EM et al., Biotechniques.
2014;57(5):241-4. Fig 1.; doi: 10.2144/000114226.



Immunohistochemical staining of MAP1LC3A in paraffin embedded human breast carcinoma using ab52768 at a 1/100 dilution.

Perform heat mediated antigen retrieval with citrate buffer pH 6 before commencing with IHC staining protocol.

Immunohistochemistry (Formalin/PFA-fixed paraffin-embedded sections) - Anti-MAP1LC3A antibody [EP1983Y] - Autophagosome Marker (ab52768)

Why choose a recombinant antibody?

 <p>Research with confidence Consistent and reproducible results</p>	 <p>Long-term and scalable supply Recombinant technology</p>
 <p>Success from the first experiment Confirmed specificity</p>	 <p>Ethical standards compliant Animal-free production</p>

Anti-MAP1LC3A antibody [EP1983Y] -
Autophagosome Marker (ab52768)

Please note: All products are "FOR RESEARCH USE ONLY. NOT FOR USE IN DIAGNOSTIC PROCEDURES"

Our Abpromise to you: Quality guaranteed and expert technical support

- Replacement or refund for products not performing as stated on the datasheet
- Valid for 12 months from date of delivery
- Response to your inquiry within 24 hours
- We provide support in Chinese, English, French, German, Japanese and Spanish
- Extensive multi-media technical resources to help you
- We investigate all quality concerns to ensure our products perform to the highest standards

If the product does not perform as described on this datasheet, we will offer a refund or replacement. For full details of the Abpromise, please visit <https://www.abcam.co.jp/abpromise> or contact our technical team.

Terms and conditions

- Guarantee only valid for products bought direct from Abcam or one of our authorized distributors