

Anti-Mannan Binding Lectin/MBL antibody [EPR18381-156] ab190834

リコンビナント **RabMAb**

画像数 5

製品の概要

製品名	Anti-Mannan Binding Lectin/MBL antibody [EPR18381-156]
製品の詳細	Rabbit monoclonal [EPR18381-156] to Mannan Binding Lectin/MBL
由来種	Rabbit
アプリケーション	適用あり: WB, IHC-P
種交差性	交差種: Mouse, Human
免疫原	Recombinant full length protein. This information is proprietary to Abcam and/or its suppliers.
ポジティブ・コントロール	WB: Mouse liver and kidney lysates; Mouse serum; Mouse Mannan Binding Lectin/MBL (aa19-244) recombinant protein. IHC-P: Mouse and human liver tissues.
特記事項	<p>This product is a recombinant monoclonal antibody, which offers several advantages including:</p> <ul style="list-style-type: none"> - High batch-to-batch consistency and reproducibility - Improved sensitivity and specificity - Long-term security of supply - Animal-free production <p>For more information see here.</p> <p>Our RabMAb[®] technology is a patented hybridoma-based technology for making rabbit monoclonal antibodies. For details on our patents, please refer to RabMAb[®] patents.</p>

製品の特性

製品の状態	Liquid
保存方法	Shipped at 4°C. Store at +4°C short term (1-2 weeks). Upon delivery aliquot. Store at -20°C long term. Avoid freeze / thaw cycle.
バッファー	<p>pH: 7.2</p> <p>Preservative: 0.01% Sodium azide</p> <p>Constituents: 0.05% BSA, 40% Glycerol (glycerin, glycerine), PBS</p>
精製度	Protein A purified
ポリ/モノ	モノクローナル
クローン名	EPR18381-156

アプリケーション

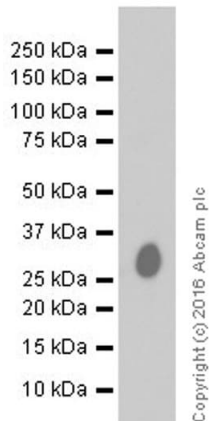
The Abpromise guarantee Abpromise保証は、次のテスト済みアプリケーションにおけるab190834の使用に適用されます
 アプリケーションノートには、推奨の開始希釈率がありますが、適切な希釈率につきましてはご確認ください。

アプリケーション	Abreviews	特記事項
WB		1/1000. Detects a band of approximately 26 kDa (predicted molecular weight: 26 kDa). This antibody is not suitable for human species in WB application due to non-specific staining and high background in human cell and tissue lysates.
IHC-P		1/800. Perform heat mediated antigen retrieval with Tris/EDTA buffer pH 9.0 before commencing with IHC staining protocol.

ターゲット情報

機能	Calcium-dependent lectin involved in innate immune defense. Binds mannose, fucose and N-acetylglucosamine on different microorganisms and activates the lectin complement pathway. Binds to late apoptotic cells, as well as to apoptotic blebs and to necrotic cells, but not to early apoptotic cells, facilitating their uptake by macrophages. May bind DNA.
組織特異性	Plasma protein produced mainly in the liver.
関連疾患	Note=There is an association between low levels of MBL2 and a defect of opsonization which results in susceptibility to frequent and chronic infections.
配列類似性	Contains 1 C-type lectin domain. Contains 1 collagen-like domain.
細胞内局在	Secreted.

画像



Western blot - Anti-Mannan Binding Lectin/MBL antibody [EPR18381-156] (ab190834)

Anti-Mannan Binding Lectin/MBL antibody [EPR18381-156] (ab190834) at 1/1000 dilution + Mouse Mannan Binding Lectin/MBL (aa19-244) recombinant protein at 0.005 µg

Secondary

Goat Anti-Rabbit IgG H&L (HRP) ([ab97051](#)) at 1/20000 dilution

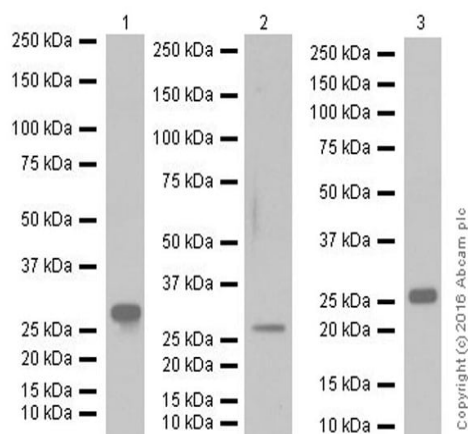
Developed using the ECL technique.

Predicted band size: 26 kDa

Observed band size: 26 kDa

Exposure time: 5 seconds

Blocking and dilution buffer: 5% NFDM/TBST.



Western blot - Anti-Mannan Binding Lectin/MBL antibody [EPR18381-156] (ab190834)

All lanes : Anti-Mannan Binding Lectin/MBL antibody [EPR18381-156] (ab190834) at 1/1000 dilution

Lane 1 : Mouse liver lysate

Lane 2 : Mouse kidney lysate

Lane 3 : Mouse serum

Lysates/proteins at 10 µg per lane.

Secondary

All lanes : Goat Anti-Rabbit IgG H&L (HRP) ([ab97051](#)) at 1/100000 dilution

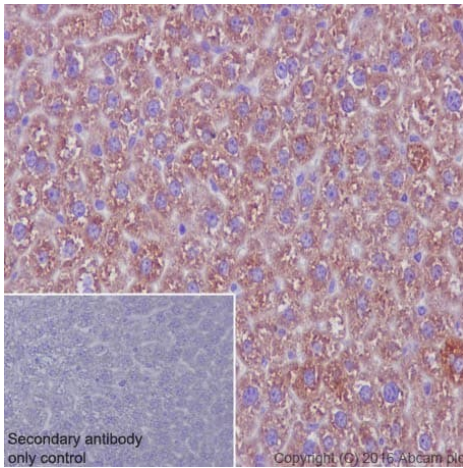
Developed using the ECL technique.

Predicted band size: 26 kDa

Observed band size: 26 kDa

Exposure time : Lane 1: 3 seconds; Lane 2: 3 minutes; Lane 3 1 second.

Blocking and dilution buffer: 5% NFDM/TBST.

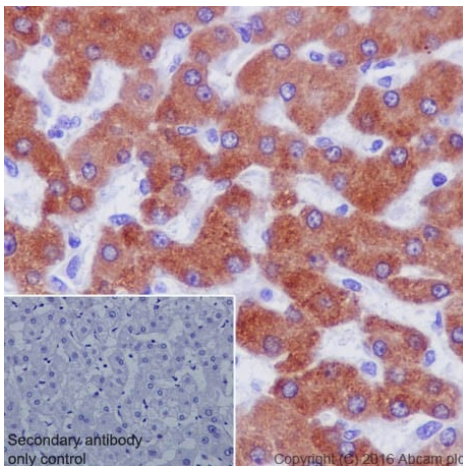


Immunohistochemistry (Formalin/PFA-fixed paraffin-embedded sections) - Anti-Mannan Binding Lectin/MBL antibody [EPR18381-156] (ab190834)

Immunohistochemical analysis of paraffin-embedded mouse liver tissue labeling Mannan Binding Lectin/MBL with ab190834 at 1/800 dilution, followed by Goat Anti-Rabbit IgG H&L (HRP) ([ab97051](#)) at 1/500 dilution. Cytoplasmic staining on mouse liver is observed. Counter stained with hematoxylin.

Secondary antibody only control: Used PBS instead of primary antibody, secondary antibody is Goat Anti-Rabbit IgG H&L (HRP) ([ab97051](#)) at 1/500 dilution.

Perform heat mediated antigen retrieval with Tris/EDTA buffer pH 9.0 before commencing with IHC staining protocol.



Immunohistochemistry (Formalin/PFA-fixed paraffin-embedded sections) - Anti-Mannan Binding Lectin/MBL antibody [EPR18381-156] (ab190834)

Immunohistochemical analysis of paraffin-embedded human liver tissue labeling Mannan Binding Lectin/MBL with ab190834 at 1/800 dilution, followed by Goat Anti-Rabbit IgG H&L (HRP) ([ab97051](#)) at 1/500 dilution. Cytoplasmic staining on human liver is observed. Counter stained with hematoxylin.

Secondary antibody only control: Used PBS instead of primary antibody, secondary antibody is Goat Anti-Rabbit IgG H&L (HRP) ([ab97051](#)) at 1/500 dilution.

Perform heat mediated antigen retrieval with Tris/EDTA buffer pH 9.0 before commencing with IHC staining protocol.

Why choose a recombinant antibody?



Research with confidence
Consistent and reproducible results



Long-term and scalable supply
Recombinant technology



Success from the first experiment
Confirmed specificity



Ethical standards compliant
Animal-free production

Anti-Mannan Binding Lectin/MBL antibody
[EPR18381-156] (ab190834)

Please note: All products are "FOR RESEARCH USE ONLY. NOT FOR USE IN DIAGNOSTIC PROCEDURES"

Our Abpromise to you: Quality guaranteed and expert technical support

- Replacement or refund for products not performing as stated on the datasheet
- Valid for 12 months from date of delivery
- Response to your inquiry within 24 hours
- We provide support in Chinese, English, French, German, Japanese and Spanish
- Extensive multi-media technical resources to help you
- We investigate all quality concerns to ensure our products perform to the highest standards

If the product does not perform as described on this datasheet, we will offer a refund or replacement. For full details of the Abpromise, please visit <https://www.abcam.co.jp/abpromise> or contact our technical team.

Terms and conditions

- Guarantee only valid for products bought direct from Abcam or one of our authorized distributors