

Anti-MALT1/MLT antibody [EPR604] ab109724

リコンビナント **RabMAb**

画像数 2

製品の概要

製品名	Anti-MALT1/MLT antibody [EPR604]
製品の詳細	Rabbit monoclonal [EPR604] to MALT1/MLT
由来種	Rabbit
アプリケーション	適用あり: WB 適用なし: Flow Cyt, IHC-P or IP
種交差性	交差種: Human
免疫原	Synthetic peptide. This information is proprietary to Abcam and/or its suppliers.
ポジティブ・コントロール	Jurkat, K562, bone marrow, and PBMC lysates
特記事項	<p>This product is a recombinant monoclonal antibody, which offers several advantages including:</p> <ul style="list-style-type: none"> - High batch-to-batch consistency and reproducibility - Improved sensitivity and specificity - Long-term security of supply - Animal-free production <p>For more information see here.</p> <p>Our RabMAb[®] technology is a patented hybridoma-based technology for making rabbit monoclonal antibodies. For details on our patents, please refer to RabMAb[®] patents.</p> <p>Mouse, Rat: We have preliminary internal testing data to indicate this antibody may not react with these species. Please contact us for more information.</p>

製品の特性

製品の状態	Liquid
保存方法	Shipped at 4°C. Upon delivery aliquot and store at -20°C. Avoid freeze / thaw cycles.
バッファー	<p>pH: 7.20</p> <p>Preservative: 0.05% Sodium azide</p> <p>Constituents: 0.1% BSA, 40% Glycerol (glycerin, glycerine), 9.85% Tris glycine, 50% Tissue culture supernatant</p>
精製度	Protein A purified
ポリ/モノ	モノクローナル

クローン名 EPR604
アイソタイプ IgG

アプリケーション

The Abpromise guarantee **Abpromise保証は、** 次のテスト済みアプリケーションにおけるab109724の使用に適用されます
アプリケーションノートには、推奨の開始希釈率がありますが、適切な希釈率につきましてはご検討ください。

アプリケーション	Abreviews	特記事項
WB		1/1000 - 1/10000. Predicted molecular weight: 92 kDa.

追加情報 Is unsuitable for Flow Cyt, IHC-P or IP.

ターゲット情報

機能 Enhances BCL10-induced activation of NF-kappa-B. Involved in nuclear export of BCL10. Binds to TRAF6, inducing TRAF6 oligomerization and activation of its ligase activity. Has ubiquitin ligase activity. MALT1-dependent BCL10 cleavage plays an important role in T-cell antigen receptor-induced integrin adhesion.

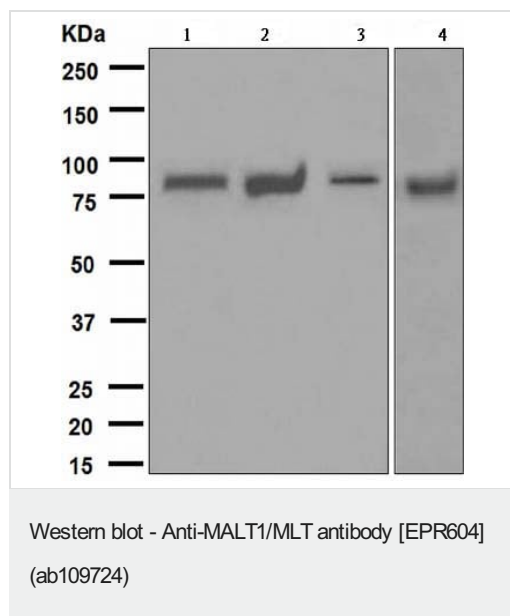
組織特異性 Highly expressed in peripheral blood mononuclear cells. Detected at lower levels in bone marrow, thymus and lymph node, and at very low levels in colon and lung.

関連疾患 Note=A chromosomal aberration involving MALT1 is recurrent in low-grade mucosa-associated lymphoid tissue (MALT lymphoma). Translocation t(11;18)(q21;q21) with BIRC2. This translocation is found in approximately 50% of cytogenetically abnormal low-grade MALT lymphoma.

配列類似性 Belongs to the peptidase C14B family.
Contains 1 death domain.
Contains 2 Ig-like C2-type (immunoglobulin-like) domains.

細胞内局在 Cytoplasm > perinuclear region. Nucleus. Shuttles between the nucleus and cytoplasm. Found in perinuclear structures together with BCL10.

画像



All lanes : Anti-MALT1/MLT antibody [EPR604] (ab109724) at 1/1000 dilution

Lane 1 : Jurkat lysate

Lane 2 : K562 lysate

Lane 3 : Bone marrow lysate

Lane 4 : PBMC lysates

Lysates/proteins at 10 µg per lane.

Secondary

All lanes : Standard HRP labelled goat anti-rabbit at 1/2000 dilution

Predicted band size: 92 kDa

Why choose a recombinant antibody?

Research with confidence
Consistent and reproducible results

Long-term and scalable supply
Recombinant technology

Success from the first experiment
Confirmed specificity

Ethical standards compliant
Animal-free production

Anti-MALT1/MLT antibody [EPR604] (ab109724)

Please note: All products are "FOR RESEARCH USE ONLY. NOT FOR USE IN DIAGNOSTIC PROCEDURES"

Our Abpromise to you: Quality guaranteed and expert technical support

- Replacement or refund for products not performing as stated on the datasheet
- Valid for 12 months from date of delivery
- Response to your inquiry within 24 hours
- We provide support in Chinese, English, French, German, Japanese and Spanish
- Extensive multi-media technical resources to help you
- We investigate all quality concerns to ensure our products perform to the highest standards

If the product does not perform as described on this datasheet, we will offer a refund or replacement. For full details of the Abpromise, please visit <https://www.abcam.co.jp/abpromise> or contact our technical team.

Terms and conditions

- Guarantee only valid for products bought direct from Abcam or one of our authorized distributors