

Anti-MAGEA11 antibody ab96236

画像 2

医薬用外劇物

製品の概要

製品名	Anti-MAGEA11 antibody
製品の詳細	Rabbit polyclonal to MAGEA11
由来種	Rabbit
特異性	It is likely that the antibody will cross-react with other proteins of the MAGE family. This information is based on BLAST homology and has not been verified experimentally. Please contact our Scientific Support for further information.
アプリケーション	適用あり: WB, IHC-P, ICC/IF
種交差性	交差種: Human
免疫原	Synthetic peptide, corresponding to a sequence corresponding to a region within amino acids 78 and 143 of MAGEA11 (NP_005357).
ポジティブ・コントロール	A431 and H1299 whole cell lysate. Ca922 Xenograft and A431 cells.
特記事項	<p>The Life Science industry has been in the grips of a reproducibility crisis for a number of years. Abcam is leading the way in addressing this with our range of recombinant monoclonal antibodies and knockout edited cell lines for gold-standard validation. Please check that this product meets your needs before purchasing.</p> <p>If you have any questions, special requirements or concerns, please send us an inquiry and/or contact our Support team ahead of purchase. Recommended alternatives for this product can be found below, along with publications, customer reviews and Q&As</p>

製品の特性

製品の状態	Liquid
保存方法	Shipped at 4°C. Upon delivery aliquot. Store at -20°C or -80°C. Avoid freeze / thaw cycle.
バッファー	pH: 7.00 Preservative: 0.01% Thimerosal (merthiolate) Constituents: 1.21% Tris, 0.75% Glycine, 10% Glycerol (glycerin, glycerine)
精製度	Immunogen affinity purified
ポリ/モノ	ポリクローナル
アイソタイプ	IgG

アプリケーション

The Abpromise guarantee Abpromise保証は、次のテスト済みアプリケーションにおけるab96236の使用に適用されず
アプリケーションノートには、推奨の開始希釈率がありますが、適切な希釈率につきましてはご検討ください。

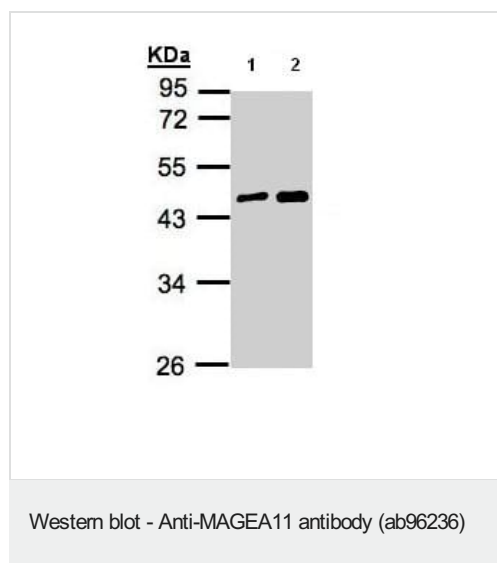
アプリケーション	Abreviews	特記事項
WB		1/500 - 1/3000. Predicted molecular weight: 48 kDa.
IHC-P		1/100 - 1/500.
ICC/IF		1/100 - 1/200.

ターゲット情報

関連性 MAGEA11 (Melanoma antigen family A, 11) is a member of the MAGEA gene family. MAGEA proteins are expressed in melanomas and other cancers. MAGEA11 acts as androgen receptor co-regulator increasing androgen receptor activity by modulating the receptors interdomain interaction.

細胞内局在 Cytoplasmic and Nuclear

画像



All lanes : Anti-MAGEA11 antibody (ab96236) at 1/5000 dilution

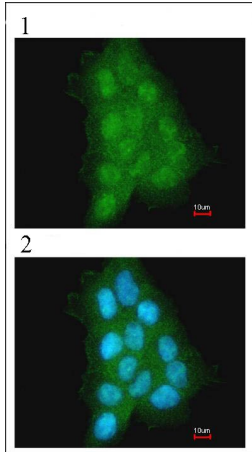
Lane 1 : A431 whole cell lysate

Lane 2 : H1299 whole cell lysate

Lysates/proteins at 30 µg per lane.

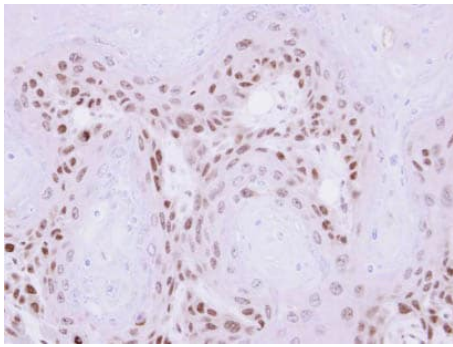
Predicted band size: 48 kDa

10% SDS PAGE



Immunofluorescence analysis of paraformaldehyde-fixed A431, using ab96236 at 1/500 dilution. (1) ab96236, (2) Merged with DNA probe.

Immunocytochemistry/ Immunofluorescence - Anti-MAGEA11 antibody (ab96236)



Immunohistochemical analysis of paraffin-embedded Ca922 xenograft, using ab96236 at 1/500 dilution.

Immunohistochemistry (Formalin/PFA-fixed paraffin-embedded sections) - Anti-MAGEA11 antibody (ab96236)

Please note: All products are "FOR RESEARCH USE ONLY. NOT FOR USE IN DIAGNOSTIC PROCEDURES"

Our Abpromise to you: Quality guaranteed and expert technical support

- Replacement or refund for products not performing as stated on the datasheet
- Valid for 12 months from date of delivery
- Response to your inquiry within 24 hours

- We provide support in Chinese, English, French, German, Japanese and Spanish
- Extensive multi-media technical resources to help you
- We investigate all quality concerns to ensure our products perform to the highest standards

If the product does not perform as described on this datasheet, we will offer a refund or replacement. For full details of the Abpromise, please visit <https://www.abcam.co.jp/abpromise> or contact our technical team.

Terms and conditions

- Guarantee only valid for products bought direct from Abcam or one of our authorized distributors