

Anti-MAGEA1 antibody ab16031

画像数 1

製品の概要

製品名	Anti-MAGEA1 antibody
製品の詳細	Rabbit polyclonal to MAGEA1
由来種	Rabbit
アプリケーション	適用あり: ICC/IF, IHC-P
種交差性	交差種: Human
免疫原	Recombinant full length protein corresponding to Human MAGEA1.
ポジティブ・コントロール	Testis and Melanoma
特記事項	<p>This product is FOR RESEARCH USE ONLY. For commercial use, please contact partnerships@abcam.com.</p> <p>The Life Science industry has been in the grips of a reproducibility crisis for a number of years. Abcam is leading the way in addressing this with our range of recombinant monoclonal antibodies and knockout edited cell lines for gold-standard validation. Please check that this product meets your needs before purchasing.</p> <p>If you have any questions, special requirements or concerns, please send us an inquiry and/or contact our Support team ahead of purchase. Recommended alternatives for this product can be found below, along with publications, customer reviews and Q&As</p>

製品の特性

製品の状態	Liquid
保存方法	Shipped at 4°C. Upon delivery aliquot and store at -20°C. Avoid repeated freeze / thaw cycles.
バッファー	pH: 7.60 Preservative: 0.1% Sodium azide Constituents: PBS, 1% BSA
精製度	Immunogen affinity purified
ポリ/モノ	ポリクローナル
アイソタイプ	IgG

アプリケーション

The Abpromise guarantee

Abpromise保証は、次のテスト済みアプリケーションにおけるab16031の使用に適用されます

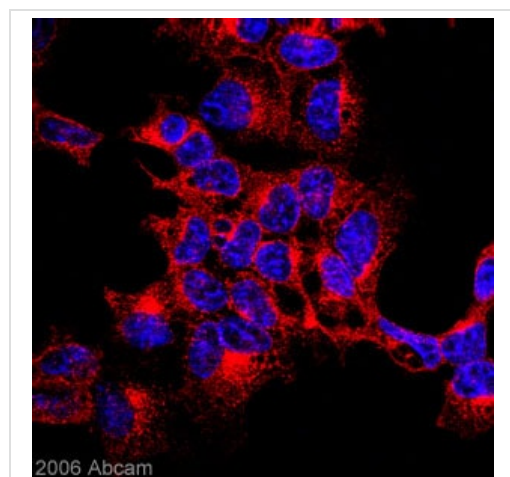
アプリケーションノートには、推奨の開始希釈率がありますが、適切な希釈率につきましてはご検討ください。

アプリケーション	Abreviews	特記事項
ICC/IF		Use at an assay dependent concentration.
IHC-P		1/200. Perform heat mediated antigen retrieval via the pressure cooker method before commencing with IHC staining protocol.

ターゲット情報

機能	May be involved in transcriptional regulation through interaction with SNW1 and recruiting histone deacetylase HDAC1. May inhibit notch intracellular domain (NICD) transactivation. May play a role in embryonal development and tumor transformation or aspects of tumor progression. Antigen recognized on a melanoma by autologous cytolytic T-lymphocytes.
組織特異性	Expressed in many tumors of several types, such as melanoma, head and neck squamous cell carcinoma, lung carcinoma and breast carcinoma, but not in normal tissues except for testes. Never expressed in kidney tumors, leukemias and lymphomas.
配列類似性	Contains 1 MAGE domain.
細胞内局在	Cytoplasm. Nucleus.

画像



Immunofluorescence staining with Mouse monoclonal [8C10] to SCAMP1+2+3 (**ab17053**; red) on Human HEK cells. Cells were fixed in methanol, no antigen retrieval step was necessary. Primary antibody was incubated for 1 hour at 5µg/ml. The confocal image shows anti-SCAMP in red and nuclear counterstain in blue.

Immunocytochemistry/ Immunofluorescence - Anti-MAGEA1 antibody (ab16031)

This image is courtesy of Randal Moldrich, CNRS UMR7637, ESPCI, France

Please note: All products are "FOR RESEARCH USE ONLY. NOT FOR USE IN DIAGNOSTIC PROCEDURES"

Our Abpromise to you: Quality guaranteed and expert technical support

- Replacement or refund for products not performing as stated on the datasheet
- Valid for 12 months from date of delivery
- Response to your inquiry within 24 hours

- We provide support in Chinese, English, French, German, Japanese and Spanish
- Extensive multi-media technical resources to help you
- We investigate all quality concerns to ensure our products perform to the highest standards

If the product does not perform as described on this datasheet, we will offer a refund or replacement. For full details of the Abpromise, please visit <https://www.abcam.co.jp/abpromise> or contact our technical team.

Terms and conditions

- Guarantee only valid for products bought direct from Abcam or one of our authorized distributors