


Anti-Mad2L2/REV7 antibody [EPR13657] ab180579

リコンビナント **RabMAb**

★★★★★ **3 Abreviews** **21 References** 画像数 6

製品の概要

製品名	Anti-Mad2L2/REV7 antibody [EPR13657]
製品の詳細	Rabbit monoclonal [EPR13657] to Mad2L2/REV7
由来種	Rabbit
アプリケーション	適用あり: Flow Cyt (Intra), IP, ICC/IF, IHC-P, WB
種交差性	交差種: Human 交差が予測される動物種: Mouse, Rat 
免疫原	Synthetic peptide. This information is proprietary to Abcam and/or its suppliers.
ポジティブ・コントロール	WB: K562, SW480, Hela, Molt-4 cell lysates. IHC-P: Human ovarian carcinoma tissue. ICC/IF: Hela cells. Flow Cyt (intra): K562 cells IP: HeLa cell lysates
特記事項	<p>This product is a recombinant monoclonal antibody, which offers several advantages including:</p> <ul style="list-style-type: none"> - High batch-to-batch consistency and reproducibility - Improved sensitivity and specificity - Long-term security of supply - Animal-free production <p>For more information see here.</p> <p>Our RabMAb[®] technology is a patented hybridoma-based technology for making rabbit monoclonal antibodies. For details on our patents, please refer to RabMAb[®] patents.</p>

製品の特性

製品の状態	Liquid
保存方法	Shipped at 4°C. Store at +4°C short term (1-2 weeks). Upon delivery aliquot. Store at -20°C long term. Avoid freeze / thaw cycle.
バッファー	Preservative: 0.01% Sodium azide Constituents: PBS, 0.05% BSA, 40% Glycerol
精製度	Protein A purified
ポリ/モノ	モノクローナル
クローン名	EPR13657
アイソタイプ	IgG

アプリケーション

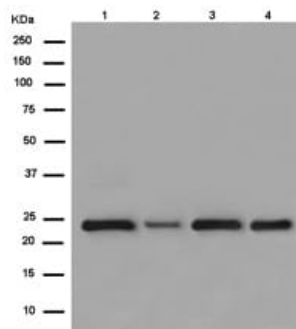
The Abpromise guarantee **Abpromise保証は、次のテスト済みアプリケーションにおけるab180579の使用に適用されます**
アプリケーションノートには、推奨の開始希釈率がありますが、適切な希釈率につきましてはご検討ください。

アプリケーション	Abreviews	特記事項
Flow Cyt (Intra)		1/70. ab172730 - Rabbit monoclonal IgG, is suitable for use as an isotype control with this antibody.
IP		1/40.
ICC/IF		1/100.
IHC-P		1/50. Perform heat mediated antigen retrieval with Tris/EDTA buffer pH 9.0 before commencing with IHC staining protocol.
WB	★★★★★ (3)	1/1000. Predicted molecular weight: 24 kDa.

ターゲット情報

機能	Adapter protein able to interact with different proteins and involved in different biological processes. Mediates the interaction between the error-prone DNA polymerase zeta catalytic subunit REV3L and the inserter polymerase REV1, thereby mediating the second polymerase switching in translesion DNA synthesis. Translesion DNA synthesis releases the replication blockade of replicative polymerases, stalled in presence of DNA lesions. May also regulate another aspect of cellular response to DNA damage through regulation of the JNK-mediated phosphorylation and activation of the transcriptional activator ELK1. Inhibits the FZR1- and probably CDC20-mediated activation of the anaphase promoting complex APC thereby regulating progression through the cell cycle. Regulates TCF7L2-mediated gene transcription and may play a role in epithelial-mesenchymal transdifferentiation.
組織特異性	Ubiquitously expressed.
配列類似性	Contains 1 HORMA domain.
細胞内局在	Nucleus. Cytoplasm > cytoskeleton > spindle. Cytoplasm.

画像



Western blot - Anti-Mad2L2/REV7 antibody [EPR13657] (ab180579)

All lanes : Anti-Mad2L2/REV7 antibody [EPR13657] (ab180579) at 1/1000 dilution

Lane 1 : K562 cell lysate

Lane 2 : SW480 cell lysate

Lane 3 : Hela cell lysate

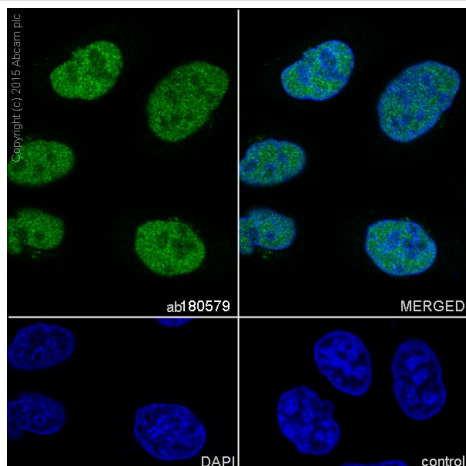
Lane 4 : Molt-4 cell lysate

Lysates/proteins at 10 µg per lane.

Secondary

All lanes : Goat Anti-Rabbit IgG, (H+L), Peroxidase conjugated at 1/1000 dilution

Predicted band size: 24 kDa

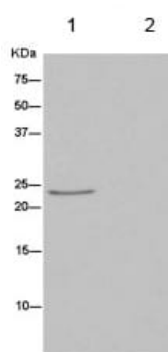


Immunocytochemistry/ Immunofluorescence - Anti-Mad2L2/REV7 antibody [EPR13657] (ab180579)

Immunocytochemistry/Immunofluorescence analysis of HeLa cells labelling Mad2L2/REV7 with **ab129199** at 1/500. Cells were fixed with 4% Paraformaldehyde. **ab150077**, an Alexa Fluor[®] 488-conjugated goat anti-rabbit IgG (1/1000) was used as the secondary antibody.

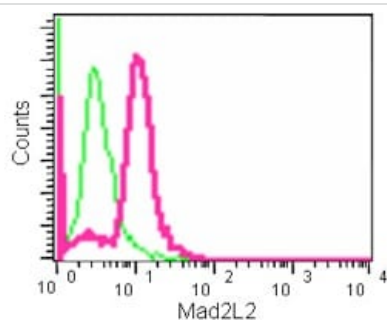
Control: PBS only.

Nuclear counter stain: DAPI.



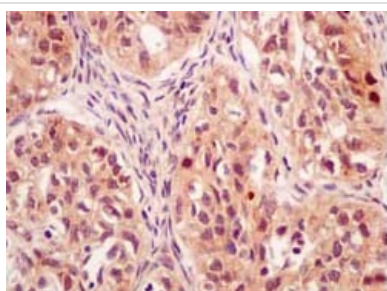
Immunoprecipitation - Anti-Mad2L2/REV7 antibody [EPR13657] (ab180579)

Immunoprecipitation of HeLa cell lysate labeling Mad2L2/REV7 using ab180579 at 1/40 dilution (lane 1) or negative control (lane 2) followed by anti-Rabbit IgG (HRP), specific to the non-reduced form of IgG at 1/1500.



Flow Cytometry (Intracellular) - Anti-Mad2L2/REV7 antibody [EPR13657] (ab180579)

Intracellular flow cytometric analysis of paraformaldehyde fixed K562 cells labeling Mad2L2/REV7 with ab180579 at 1/70 dilution and Goat anti rabbit IgG (FITC) at 1/50.



Immunohistochemistry (Formalin/PFA-fixed paraffin-embedded sections) - Anti-Mad2L2/REV7 antibody [EPR13657] (ab180579)

Immunohistochemical staining of paraffin-embedded human ovarian carcinoma tissue labeling Mad2L2/REV7 using ab180579 at a 1/50 dilution and ImmunoHistoprobe HRP Polymer for Rabbit IgG. Counterstained with hematoxylin. Heat mediated antigen retrieval was performed with EDTA buffer pH 9 before commencing with IHC staining protocol.

Why choose a recombinant antibody?



Research with confidence
Consistent and reproducible results



Long-term and scalable supply
Recombinant technology



Success from the first experiment
Confirmed specificity



Ethical standards compliant
Animal-free production

Anti-Mad2L2/REV7 antibody [EPR13657]
(ab180579)

Please note: All products are "FOR RESEARCH USE ONLY. NOT FOR USE IN DIAGNOSTIC PROCEDURES"

Our Abpromise to you: Quality guaranteed and expert technical support

- Replacement or refund for products not performing as stated on the datasheet
- Valid for 12 months from date of delivery
- Response to your inquiry within 24 hours
- We provide support in Chinese, English, French, German, Japanese and Spanish
- Extensive multi-media technical resources to help you
- We investigate all quality concerns to ensure our products perform to the highest standards

If the product does not perform as described on this datasheet, we will offer a refund or replacement. For full details of the Abpromise, please visit <https://www.abcam.co.jp/abpromise> or contact our technical team.

Terms and conditions

- Guarantee only valid for products bought direct from Abcam or one of our authorized distributors