


### Anti-Mad2L1 antibody ab97777

★★★★★ 1 Abreviews 9 References 画像数 3

医薬用外劇物

#### 製品の概要

製品名	Anti-Mad2L1 antibody
製品の詳細	Rabbit polyclonal to Mad2L1
由来種	Rabbit
アプリケーション	<b>適用あり:</b> WB, IHC-P, ICC/IF
種交差性	<b>交差種:</b> Human <b>交差が予測される動物種:</b> Rat 
免疫原	Synthetic peptide corresponding to a region within amino acids 192 and 205 of Human Mad2L1 (NP_002349).
ポジティブ・コントロール	NCIN87, U2OS, HepG2, MOLT4 and Raji cell lines; DLD-1 xenograft
特記事項	<p>The Life Science industry has been in the grips of a reproducibility crisis for a number of years. Abcam is leading the way in addressing this with our range of recombinant monoclonal antibodies and knockout edited cell lines for gold-standard validation. Please check that this product meets your needs before purchasing.</p> <p>If you have any questions, special requirements or concerns, please send us an inquiry and/or contact our Support team ahead of purchase. Recommended alternatives for this product can be found below, along with publications, customer reviews and Q&amp;As</p>

#### 製品の特性

製品の状態	Liquid
保存方法	Shipped at 4°C. Upon delivery aliquot and store at -20°C or -80°C. Avoid repeated freeze / thaw cycles.
バッファー	<p>pH: 7.00</p> <p>Preservative: 0.01% Thimerosal (merthiolate)</p> <p>Constituents: 59.99% PBS, 40% Glycerol (glycerin, glycerine)</p>
精製度	Immunogen affinity purified
ポリ/モノ	ポリクローナル
アイソタイプ	IgG

## アプリケーション

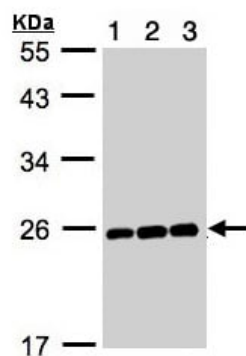
**The Abpromise guarantee**      **Abpromise保証は、**次のテスト済みアプリケーションにおけるab97777の使用に適用されます  
アプリケーションノートには、推奨の開始希釈率がありますが、適切な希釈率につきましてはご確認ください。

アプリケーション	Abreviews	特記事項
WB		1/500 - 1/1000. Predicted molecular weight: 24 kDa.
IHC-P	★★★★★ (1)	1/100 - 1/500.
ICC/IF		1/100 - 1/200.

## ターゲット情報

機能	Component of the spindle-assembly checkpoint that prevents the onset of anaphase until all chromosomes are properly aligned at the metaphase plate. Required for the execution of the mitotic checkpoint which monitors the process of kinetochore-spindle attachment and inhibits the activity of the anaphase promoting complex by sequestering CDC20 until all chromosomes are aligned at the metaphase plate.
配列類似性	Belongs to the MAD2 family. Contains 1 HORMA domain.
ドメイン	The protein has two highly different native conformations, an inactive open conformation that cannot bind CDC20 and that predominates in cytosolic monomers, and an active closed conformation. The protein in the closed conformation preferentially dimerizes with another molecule in the open conformation, but can also form a dimer with a molecule in the closed conformation. Formation of a heterotetrameric core complex containing two molecules of MAD1L1 and of MAD2L1 in the closed conformation promotes binding of another molecule of MAD2L1 in the open conformation and the conversion of the open to the closed form, and thereby promotes interaction with CDC20.
翻訳後修飾	Phosphorylated on multiple serine residues. The level of phosphorylation varies during the cell cycle and is highest during mitosis. Phosphorylation abolishes interaction with MAD1L1 and reduces interaction with CDC20.
細胞内局在	Nucleus. Chromosome > centromere > kinetochore. Cytoplasm. Recruited by MAD1L1 to unattached kinetochores (Probable). Recruited to the nuclear pore complex by TPR during interphase. Recruited to kinetochores in late prometaphase after BUB1, CENPF, BUB1B and CENPE. Kinetochore association requires the presence of NEK2. Kinetochore association is repressed by UBD.

## 画像



Western blot - Anti-Mad2L1 antibody (ab97777)

**All lanes :** Anti-Mad2L1 antibody (ab97777) at 1/1000 dilution

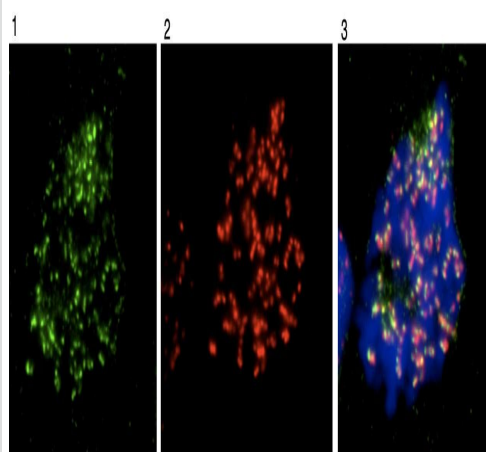
**Lane 1 :** HepG2 whole cell lysate

**Lane 2 :** MOLT4 whole cell lysate

**Lane 3 :** Raji whole cell lysate

Lysates/proteins at 30 µg per lane.

**Predicted band size:** 24 kDa



Immunocytochemistry/ Immunofluorescence - Anti-Mad2L1 antibody (ab97777)

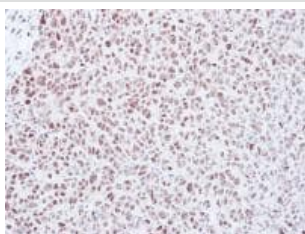
Immunofluorescence analysis of Mad2L1 in Human osteosarcoma cell line U2OS, using ab97777 at 1/1000 dilution.

1: Mad2L1

2: ACA

3: merged with DAPI

Cells were fixed with 4% PFA/PBS for 15min, RT and blocked with 2.5% BSA/PBS.



Immunohistochemistry (Formalin/PFA-fixed paraffin-embedded sections) - Anti-Mad2L1 antibody (ab97777)

Immunohistochemical analysis of Mad2L1 in paraffin embedded DLD-1 xenograft, using ab97777 at a 1/500 dilution.

**Please note:** All products are "FOR RESEARCH USE ONLY. NOT FOR USE IN DIAGNOSTIC PROCEDURES"

### **Our Abpromise to you: Quality guaranteed and expert technical support**

---

- Replacement or refund for products not performing as stated on the datasheet
- Valid for 12 months from date of delivery
- Response to your inquiry within 24 hours
- We provide support in Chinese, English, French, German, Japanese and Spanish
- Extensive multi-media technical resources to help you
- We investigate all quality concerns to ensure our products perform to the highest standards

If the product does not perform as described on this datasheet, we will offer a refund or replacement. For full details of the Abpromise, please visit <https://www.abcam.co.jp/abpromise> or contact our technical team.

### **Terms and conditions**

---

- Guarantee only valid for products bought direct from Abcam or one of our authorized distributors