

Anti-Macrophage Inflammatory Protein 1 alpha / CCL3 antibody [EPR19900-147] ab245251

リコンビナント RabMAb

画像数 3

製品の概要

製品名	Anti-Macrophage Inflammatory Protein 1 alpha / CCL3 antibody [EPR19900-147]
製品の詳細	Rabbit monoclonal [EPR19900-147] to MIP-1 alpha/CCL3
由来種	Rabbit
アプリケーション	適用あり: Flow Cyt (Intra), ICC/IF 適用なし: IHC-P or WB
種交差性	交差種: Human
免疫原	Recombinant fragment. This information is proprietary to Abcam and/or its suppliers.
ポジティブ・コントロール	ICC/IF: THP-1 cells treated with 80nM TPA overnight, then treated with 100ng/ml LPS for 3h and together with 300ng/ml BFA for another 3h. Flow: THP-1 cells treated with 80nM TPA overnight, then treated with 100ng/ml LPS for 3h and together with 300ng/ml BFA for another 3h.
特記事項	This product is a recombinant monoclonal antibody, which offers several advantages including: - High batch-to-batch consistency and reproducibility - Improved sensitivity and specificity - Long-term security of supply - Animal-free production For more information see here . Our RabMAb [®] technology is a patented hybridoma-based technology for making rabbit monoclonal antibodies. For details on our patents, please refer to RabMAb[®] patents .

製品の特性

製品の状態	Liquid
保存方法	Shipped at 4°C. Store at +4°C short term (1-2 weeks). Upon delivery aliquot. Store at -20°C long term. Avoid freeze / thaw cycle.
バッファー	pH: 7.2 Preservative: 0.01% Sodium azide Constituents: PBS, 40% Glycerol (glycerin, glycerine), 0.05% BSA
精製度	Protein A purified

ポリ/モノ モノクローナル
クローン名 EPR19900-147
アイソタイプ IgG

アプリケーション

The Abpromise guarantee **Abpromise保証は、次のテスト済みアプリケーションにおけるab245251の使用に適用されず**
アプリケーションノートには、推奨の開始希釈率がありますが、適切な希釈率につきましてはご検討ください。

アプリケーション	Abreviews	特記事項
Flow Cyt (Intra)		1/500.
ICC/IF		1/100.

追加情報 Is unsuitable for IHC-P or WB.

ターゲット情報

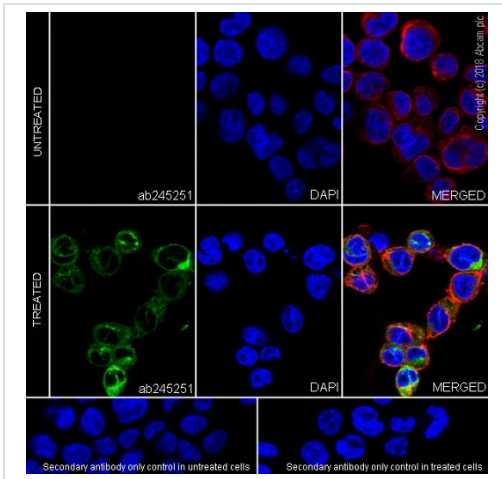
機能 Monokine with inflammatory and chemokinetic properties. Binds to CCR1, CCR4 and CCR5. One of the major HIV-suppressive factors produced by CD8+ T-cells. Recombinant MIP-1-alpha induces a dose-dependent inhibition of different strains of HIV-1, HIV-2, and simian immunodeficiency virus (SIV).

配列類似性 Belongs to the intercrine beta (chemokine CC) family.

翻訳後修飾 N-terminal processed form LD78-alpha(4-69) is produced by proteolytic cleavage after secretion from HTLV1-transformed T-cells.

細胞内局在 Secreted.

画像

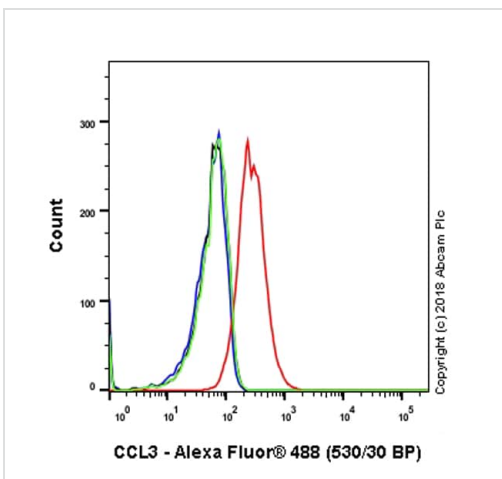


Immunocytochemistry/ Immunofluorescence - Anti-MIP-1 alpha/CCL3 antibody [EPR19900-147] (ab245251)

Immunofluorescent analysis of 4% paraformaldehyde-fixed, 0.1% Triton X-100 permeabilized THP-1 (human monocytic leukemia cell line) cells, treated with 80nM TPA overnight, then treated with 100ng/ml LPS for 3h and together with 300ng/ml BFA for another 3h or Untreated control, labeling Macrophage Inflammatory Protein 1 alpha / CCL3 with ab245251 at 1/100 dilution followed by Goat Anti-Rabbit IgG H&L (Alexa Fluor® 488) (**ab150077**) secondary antibody at 1/1000 dilution (green). Confocal image showing cytoplasmic staining on THP-1 cells treated with 80nM TPA overnight, then treated with 100ng/ml LPS for 3h and together with 300ng/ml BFA for another 3h.

The nuclear counter stain is DAPI (blue). Tubulin is detected with Anti-alpha Tubulin antibody [DM1A] - Microtubule Marker (Alexa Fluor® 594) (**ab195889**) (red) at 1/200 dilution.

Secondary antibody only control: Used PBS instead of primary antibody, secondary antibody is Goat Anti-Rabbit IgG H&L (Alexa Fluor® 488) (**ab150077**) secondary antibody at 1/1000 dilution.



Flow Cytometry (Intracellular) - Anti-MIP-1 alpha/CCL3 antibody [EPR19900-147] (ab245251)

Intracellular flow cytometric analysis of 4% paraformaldehyde-fixed, 0.1% Tween-20-permeabilized THP-1 (human monocytic leukemia cell line) cell line, treated with 80nM TPA overnight, then treated with 100ng/ml LPS for 3h and together with 300ng/ml BFA for another 3h (red) or Untreated control (green), labeling Macrophage Inflammatory Protein 1 alpha / CCL3 with ab245251 at 1/500 dilution (red) compared with a Rabbit IgG, monoclonal [EPR25A] - Isotype Control (**ab172730**) (black) and an unlabeled control (cells without incubation with primary antibody and secondary antibody) (blue). Goat Anti-Rabbit IgG H&L (Alexa Fluor® 488) (**ab150077**) at 1/2000 dilution was used as the secondary antibody.

Why choose a recombinant antibody?



Research with confidence
Consistent and reproducible results



Long-term and scalable supply
Recombinant technology



Success from the first experiment
Confirmed specificity



Ethical standards compliant
Animal-free production

Anti-MIP-1 alpha/CCL3 antibody [EPR19900-147]
(ab245251)

Please note: All products are "FOR RESEARCH USE ONLY. NOT FOR USE IN DIAGNOSTIC PROCEDURES"

Our Abpromise to you: Quality guaranteed and expert technical support

- Replacement or refund for products not performing as stated on the datasheet
- Valid for 12 months from date of delivery
- Response to your inquiry within 24 hours
- We provide support in Chinese, English, French, German, Japanese and Spanish
- Extensive multi-media technical resources to help you
- We investigate all quality concerns to ensure our products perform to the highest standards

If the product does not perform as described on this datasheet, we will offer a refund or replacement. For full details of the Abpromise, please visit <https://www.abcam.co.jp/abpromise> or contact our technical team.

Terms and conditions

- Guarantee only valid for products bought direct from Abcam or one of our authorized distributors