




Anti-MACF1 antibody ab117418

7 References [画像数 1](#)

製品の概要

製品名	Anti-MACF1 antibody
製品の詳細	Rabbit polyclonal to MACF1
由来種	Rabbit
アプリケーション	適用あり: IHC-P, ICC/IF, WB, IP, ELISA
種交差性	交差種: Mouse 交差が予測される動物種: Rat 
免疫原	Synthetic peptide corresponding to Mouse MACF1 aa 3650-3850. Database link: Q9QXZ0 <div>  Run BLAST with  Run BLAST with </div>
特記事項	<p>The Life Science industry has been in the grips of a reproducibility crisis for a number of years. Abcam is leading the way in addressing this with our range of recombinant monoclonal antibodies and knockout edited cell lines for gold-standard validation. Please check that this product meets your needs before purchasing.</p> <p>If you have any questions, special requirements or concerns, please send us an inquiry and/or contact our Support team ahead of purchase. Recommended alternatives for this product can be found below, along with publications, customer reviews and Q&As</p>

製品の特性

製品の状態	Liquid
保存方法	Shipped at 4°C. Upon delivery aliquot and store at -20°C. Avoid repeated freeze / thaw cycles.
バッファー	Constituent: Proprietary component
精製度	Immunogen affinity purified
ポリ/モノ	ポリクローナル
アイソタイプ	IgG

アプリケーション

The Abpromise guarantee **Abpromise保証は、** 次のテスト済みアプリケーションにおけるab117418の使用に適用されます
 アプリケーションノートには、推奨の開始希釈率がありますが、適切な希釈率につきましてはご検討ください。

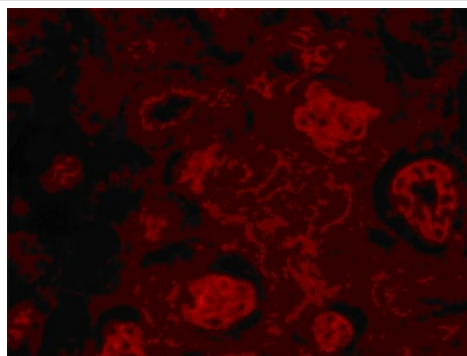
アプリケーション	Abreviews	特記事項
IHC-P		1/250.
ICC/IF		1/250.
WB		1/500. Predicted molecular weight: 838 kDa.
IP		1/200.
ELISA		1/10000.

ターゲット情報

関連性 Microtubule-actin crosslinking factor 1 (MACF1/ACF7) belongs to spectraplakins family of proteins which also includes mammalian Bpag1/dystonin, Drosophila Short Stop (Shot) and Caenorhabditis elegans Vab-10. These are large actin-microtubule linker molecules that are essential for various biological processes such as neuronal degeneration, wound healing, gastrulation. MACF1, located on mouse chromosome 4D2.2, was found to play an important role during neurogenesis- it was shown that MACF1 regulates the organization of neuronal microtubules which is essential for axon extension. Furthermore, MACF1 is required in controlling focal adhesion assembly and dynamics. MACF1 behaves as an actin-regulated ATPase and it has the ability to target microtubules that track along F-actin to focal adhesions. MACF1 was also implicated in regulating filopodia formation.

細胞内局在 Cytoplasmic, microtubule. Plasma membrane. Golgi apparatus.

画像



ab117418 at 1/250 dilution staining MACF1 in paraformaldehyde fixed Mouse kidney tissue by Immunofluorescence. Antigen retrieval was performed in a pressure cooker for 15 minutes.

Immunohistochemistry (Formalin/PFA-fixed paraffin-embedded sections) - Anti-MACF1 antibody (ab117418)

Please note: All products are "FOR RESEARCH USE ONLY. NOT FOR USE IN DIAGNOSTIC PROCEDURES"

Our Abpromise to you: Quality guaranteed and expert technical support

- Replacement or refund for products not performing as stated on the datasheet
- Valid for 12 months from date of delivery
- Response to your inquiry within 24 hours

- We provide support in Chinese, English, French, German, Japanese and Spanish
- Extensive multi-media technical resources to help you
- We investigate all quality concerns to ensure our products perform to the highest standards

If the product does not perform as described on this datasheet, we will offer a refund or replacement. For full details of the Abpromise, please visit <https://www.abcam.co.jp/abpromise> or contact our technical team.

Terms and conditions

- Guarantee only valid for products bought direct from Abcam or one of our authorized distributors