

### Anti-M-CSF antibody [EPR20948] ab233387

リコンビナント RabMAb

★★★★☆ **1 Abreviews** **6 References** 画像数 9

#### 製品の概要

製品名	Anti-M-CSF antibody [EPR20948]
製品の詳細	Rabbit monoclonal [EPR20948] to M-CSF
由来種	Rabbit
アプリケーション	<b>適用あり:</b> Flow Cyt (Intra), WB, IHC-P, ICC/IF
種交差性	<b>交差種:</b> Mouse, Rat, Human
免疫原	Synthetic peptide. This information is proprietary to Abcam and/or its suppliers.
ポジティブ・コントロール	WB: U937, P388D1, J774A.1, Jurkat, MDA-MB-231, K562, C6, PC-12 and NIH/3T3 whole cell lysates; Human tonsil, brain and kidney lysates. IHC-P: Human colon and bladder cancer tissues; Mouse and rat colon tissues. ICC/IF: Jurkat cells. Flow Cyt (intra): Jurkat cells.
特記事項	<p>This product is a recombinant monoclonal antibody, which offers several advantages including:</p> <ul style="list-style-type: none"><li>- High batch-to-batch consistency and reproducibility</li><li>- Improved sensitivity and specificity</li><li>- Long-term security of supply</li><li>- Animal-free production</li></ul> <p>For more information <a href="#">see here</a>.</p> <p>Our RabMAb<sup>®</sup> technology is a patented hybridoma-based technology for making rabbit monoclonal antibodies. For details on our patents, please refer to <a href="#">RabMAb<sup>®</sup> patents</a>.</p>

#### 製品の特性

製品の状態	Liquid
保存方法	Shipped at 4°C. Store at +4°C short term (1-2 weeks). Upon delivery aliquot. Store at -20°C long term. Avoid freeze / thaw cycle.
バッファー	pH: 7.2 Preservative: 0.01% Sodium azide Constituents: PBS, 40% Glycerol (glycerin, glycerine), 0.05% BSA
精製度	Protein A purified
ポリ/モノ	モノクローナル
クローン名	EPR20948

## アプリケーション

**The Abpromise guarantee** **Abpromise保証は、次のテスト済みアプリケーションにおけるab233387の使用に適用されず**  
アプリケーションノートには、推奨の開始希釈率がありますが、適切な希釈率につきましてはご検討ください。

アプリケーション	Abreviews	特記事項
Flow Cyt (Intra)		1/500.
WB		1/1000. Detects a band of approximately 43 kDa (predicted molecular weight: 60 kDa).
IHC-P		1/500. Perform heat mediated antigen retrieval with Tris/EDTA buffer pH 9.0 before commencing with IHC staining protocol.
ICC/IF		1/100.

## ターゲット情報

## 機能

Granulocyte/macrophage colony-stimulating factors are cytokines that act in hematopoiesis by controlling the production, differentiation, and function of 2 related white cell populations of the blood, the granulocytes and the monocytes-macrophages. CSF-1 induces cells of the monocyte/macrophage lineage. It plays a role in immunological defenses, bone metabolism, lipoproteins clearance, fertility and pregnancy.

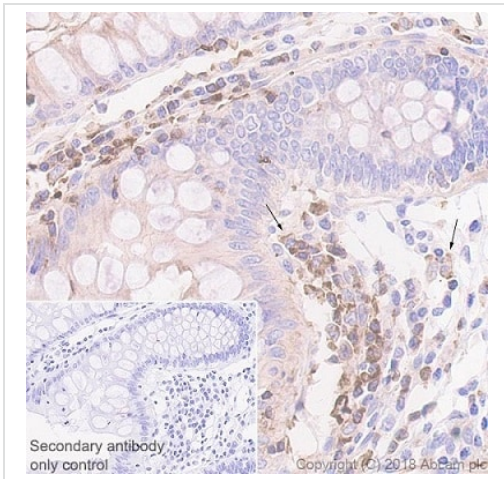
## 翻訳後修飾

Glycosylation and proteolytic cleavage yield different soluble forms. A high molecular weight soluble form is a proteoglycan containing chondroitin sulfate.  
Isoform 1 is N- and O-glycosylated. Isoform 3 is N-glycosylated.

## 細胞内局在

Cell membrane and Secreted > extracellular space.

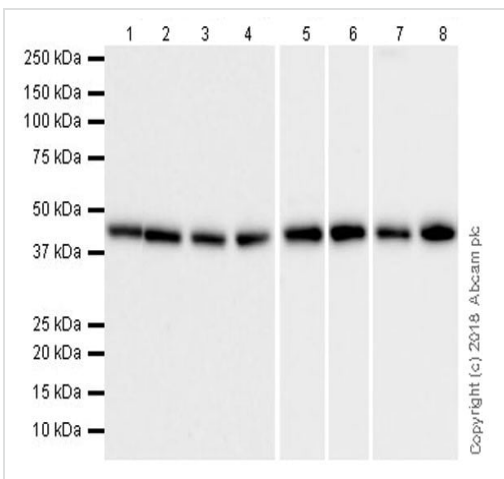
## 画像



Immunohistochemistry (Formalin/PFA-fixed paraffin-embedded sections) - Anti-M-CSF antibody [EPR20948] (ab233387)

Immunohistochemical analysis of paraffin-embedded human colon tissue labeling M-CSF with ab233387 at 1/1000 dilution, followed by Goat Anti-Rabbit IgG H&L (HRP) Ready to use. Counter stained with hematoxylin. Heat-mediated antigen retrieval using [ab93684](#) (Tris/EDTA buffer, pH 9.0). Positive staining on stromal cells (arrows) and weak staining on epithelium of human colon (PMID: 15519852; PMID: 11745698).

Secondary antibody only control: Used PBS instead of primary antibody, secondary antibody is Goat Anti-Rabbit IgG H&L (HRP) Ready to use.



Western blot - Anti-M-CSF antibody [EPR20948] (ab233387)

**All lanes** : Anti-M-CSF antibody [EPR20948] (ab233387) at 1/1000 dilution

**Lane 1** : U937 (human histiocytic lymphoma cell line) whole cell lysate

**Lane 2** : P388D1 (mouse lymphoma monocyte; macrophage cell line) whole cell lysate

**Lanes 3 & 7** : J774A.1 (mouse reticulum cell sarcoma monocyte macrophage cell line) whole cell lysate

**Lane 4** : Human tonsil lysate

**Lane 5** : Jurkat (human T cell leukemia cell line from peripheral blood) whole cell lysate

**Lane 6** : MDA-MB-231 (human breast adenocarcinoma cell line) whole cell lysate

**Lane 8** : K562 (human chronic myelogenous leukemia cell line from bone marrow) whole cell lysate

Lysates/proteins at 20 µg per lane.

### Secondary

**All lanes** : Goat Anti-Rabbit IgG H&L (HRP) ([ab97051](#)) at 1/50000 dilution

Developed using the ECL technique.

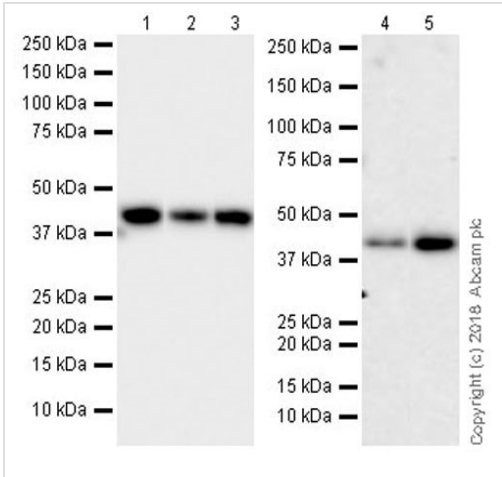
**Predicted band size:** 60 kDa

**Observed band size:** 43 kDa

**Exposure time :** Lanes 1-4: 3 minutes; Lanes 5: 6 seconds; Lanes 6-8: 26 seconds.

Blocking/Dilution buffer: 5% NFDM/TBST.

The molecular mass observed is consistent with what has been described in the literature (PMID: 21502940; PMID: 3264877).



Western blot - Anti-M-CSF antibody [EPR20948] (ab233387)

**All lanes :** Anti-M-CSF antibody [EPR20948] (ab233387) at 1/1000 dilution

**Lane 1 :** C6 (rat glial tumor cell line) whole cell lysate

**Lane 2 :** PC-12 (rat adrenal gland pheochromocytoma cell line) whole cell lysate

**Lane 3 :** NIH/3T3 (mouse embryo fibroblast cell line) whole cell lysate

**Lane 4 :** Human brain lysate

**Lane 5 :** Human kidney lysate

Lysates/proteins at 10 µg per lane.

#### Secondary

**Lanes 1-3 :** Goat Anti-Rabbit IgG H&L (HRP) ([ab97051](#)) at 1/50000 dilution

**Lanes 4-5 :** VeriBlot for IP Detection Reagent (HRP) ([ab131366](#)) at 1/2000 dilution

Developed using the ECL technique.

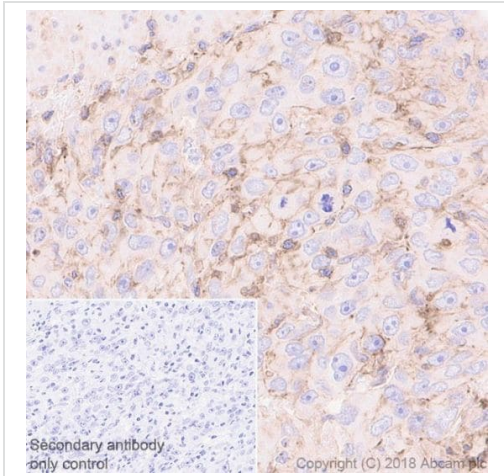
**Predicted band size:** 60 kDa

**Observed band size:** 43 kDa

**Exposure time :** Lanes 1-3: 3 minutes; Lanes 4-5:10 seconds.

Blocking/Dilution buffer: 5% NFDM/TBST.

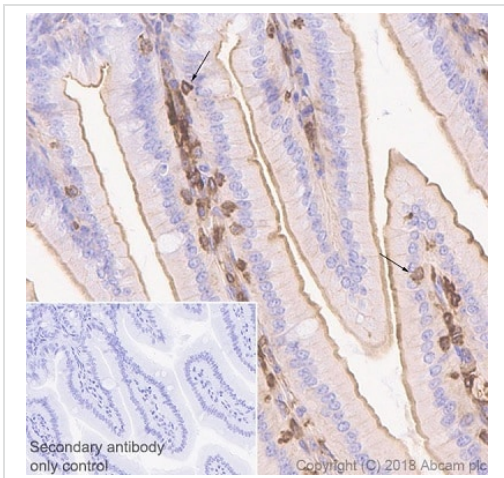
The molecular mass observed is consistent with what has been described in the literature (PMID: 21502940; PMID: 3264877).



Immunohistochemistry (Formalin/PFA-fixed paraffin-embedded sections) - Anti-M-CSF antibody [EPR20948] (ab233387)

Immunohistochemical analysis of paraffin-embedded human bladder cancer tissue labeling M-CSF with ab233387 at 1/1000 dilution, followed by Goat Anti-Rabbit IgG H&L (HRP) Ready to use. Counter stained with hematoxylin. Heat-mediated antigen retrieval using **ab93684** (Tris/EDTA buffer, pH 9.0). Membranous and weak cytoplasmic staining on human bladder cancer (PMID: 25082815; PMID: 25667468) is observed.

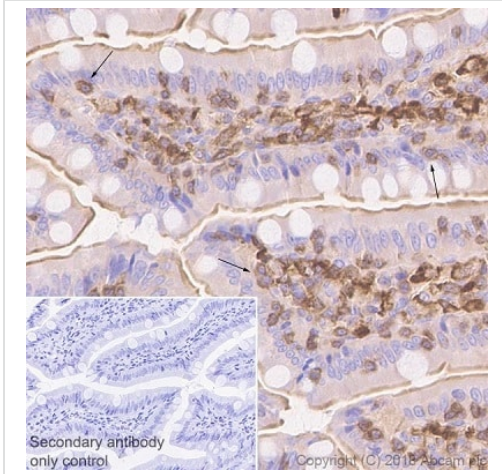
Secondary antibody only control: Used PBS instead of primary antibody, secondary antibody is Goat Anti-Rabbit IgG H&L (HRP) Ready to use.



Immunohistochemistry (Formalin/PFA-fixed paraffin-embedded sections) - Anti-M-CSF antibody [EPR20948] (ab233387)

Immunohistochemical analysis of paraffin-embedded mouse colon tissue labeling M-CSF with ab233387 at 1/1000 dilution, followed by Goat Anti-Rabbit IgG H&L (HRP) Ready to use. Counter stained with hematoxylin. Heat-mediated antigen retrieval using **ab93684** (Tris/EDTA buffer, pH 9.0). Positive staining on stromal cells (arrows) and weak staining on epithelium of mouse colon (PMID: 15519852; PMID: 11745698).

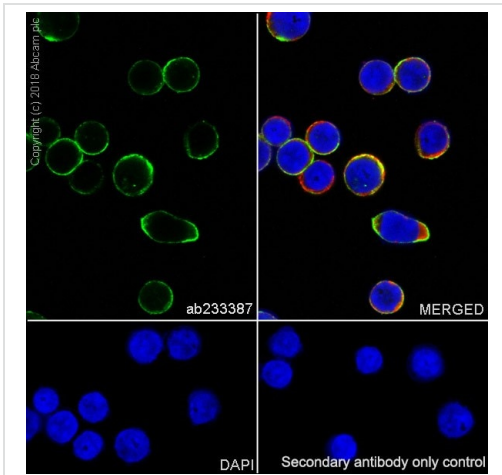
Secondary antibody only control: Used PBS instead of primary antibody, secondary antibody is Goat Anti-Rabbit IgG H&L (HRP) Ready to use.



Immunohistochemistry (Formalin/PFA-fixed paraffin-embedded sections) - Anti-M-CSF antibody [EPR20948] (ab233387)

Immunohistochemical analysis of paraffin-embedded rat colon tissue labeling M-CSF with ab233387 at 1/1000 dilution, followed by Goat Anti-Rabbit IgG H&L (HRP) Ready to use. Counter stained with hematoxylin. Heat-mediated antigen retrieval using [ab93684](#) (Tris/EDTA buffer, pH 9.0). Positive staining on stromal cells (arrows) and weak staining on epithelium of rat colon (PMID: 15519852; PMID: 11745698)

Secondary antibody only control: Used PBS instead of primary antibody, secondary antibody is Goat Anti-Rabbit IgG H&L (HRP) Ready to use.

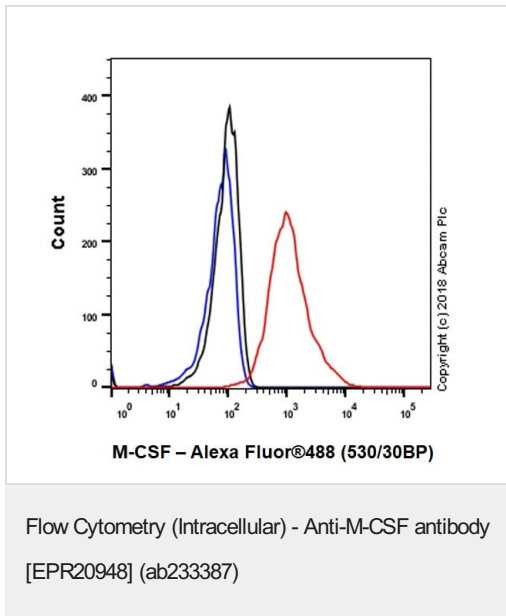


Immunocytochemistry/ Immunofluorescence - Anti-M-CSF antibody [EPR20948] (ab233387)

Immunofluorescent analysis of 100% methanol-fixed Jurkat (human T cell leukemia cell line from peripheral blood) cells labeling M-CSF with ab233387 at 1/100 dilution followed by Goat Anti-Rabbit IgG H&L (Alexa Fluor® 488) ([ab150077](#)) secondary antibody at 1/1000 dilution (green). Confocal image showing membranous staining in Jurkat cell line.





The nuclear counter stain is DAPI (blue). Tubulin is detected with Anti-alpha Tubulin antibody [DM1A] - Microtubule Marker (Alexa Fluor® 594) ([ab195889](#)) (red) at 1/200 dilution.

Secondary antibody only control: Used PBS instead of primary antibody, secondary antibody is Goat Anti-Rabbit IgG H&L (Alexa Fluor® 488) ([ab150077](#)) secondary antibody at 1/1000 dilution.



Intracellular flow cytometric analysis of 4% paraformaldehyde-fixed, 90% methanol-permeabilized Jurkat (human T cell leukemia cell line from peripheral blood) cells labeling M-CSF with ab233387 at 1/500 dilution (red) compared with a Rabbit IgG, monoclonal [EPR25A] - Isotype Control ([ab172730](#)) (black) and an unlabeled control (cells without incubation with primary antibody and secondary antibody) (blue). Goat Anti-Rabbit IgG H&L (Alexa Fluor® 488) ([ab150077](#)) at 1/2000 dilution was used as the secondary antibody.

Why choose a recombinant antibody?

 <p><b>Research with confidence</b> Consistent and reproducible results</p>	 <p><b>Long-term and scalable supply</b> Recombinant technology</p>
 <p><b>Success from the first experiment</b> Confirmed specificity</p>	 <p><b>Ethical standards compliant</b> Animal-free production</p>

Anti-M-CSF antibody [EPR20948] (ab233387)

**Please note:** All products are "FOR RESEARCH USE ONLY. NOT FOR USE IN DIAGNOSTIC PROCEDURES"

### Our Abpromise to you: Quality guaranteed and expert technical support

- Replacement or refund for products not performing as stated on the datasheet
- Valid for 12 months from date of delivery
- Response to your inquiry within 24 hours
- We provide support in Chinese, English, French, German, Japanese and Spanish
- Extensive multi-media technical resources to help you

- We investigate all quality concerns to ensure our products perform to the highest standards

If the product does not perform as described on this datasheet, we will offer a refund or replacement. For full details of the Abpromise, please visit <https://www.abcam.co.jp/abpromise> or contact our technical team.

### **Terms and conditions**

---

- Guarantee only valid for products bought direct from Abcam or one of our authorized distributors