


Anti-LysRS antibody [EPR7921] ab129080

リコンビナント RabMAb

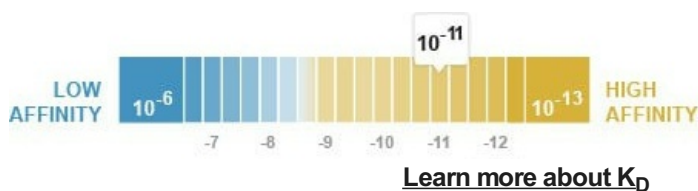
4 References 画像数 5

製品の概要

製品名	Anti-LysRS antibody [EPR7921]
製品の詳細	Rabbit monoclonal [EPR7921] to LysRS
由来種	Rabbit
アプリケーション	適用あり: WB, IHC-P, ICC/IF 適用なし: Flow Cyt
種交差性	交差種: Human 交差が予測される動物種: Mouse, Rat 
免疫原	Synthetic peptide corresponding to Human LysRS aa 550-650. Database link: Q15046
ポジティブ・コントロール	Jurkat, HeLa, 293T, HepG2, and Caco 2 cell lysates; Human colon tissue This antibody gave a positive result when used in the following methanol fixed cell lines: CACO-2
特記事項	This product is a recombinant monoclonal antibody, which offers several advantages including: <ul style="list-style-type: none"> - High batch-to-batch consistency and reproducibility - Improved sensitivity and specificity - Long-term security of supply - Animal-free production For more information see here . Our RabMAb [®] technology is a patented hybridoma-based technology for making rabbit monoclonal antibodies. For details on our patents, please refer to RabMAb[®] patents .

製品の特性

製品の状態	Liquid
保存方法	Shipped at 4°C. Store at -20°C. Stable for 12 months at -20°C.
解離定数 (K _D 値)	K _D = 1.44 x 10 ⁻¹¹ M



バッファー	pH: 7.20 Preservative: 0.01% Sodium azide Constituents: 9% PBS, 40% Glycerol (glycerin, glycerine), 0.05% BSA, 50% Tissue culture supernatant
精製度	Protein A purified
ポリ/モノ	モノクローナル
クローン名	EPR7921
アイソタイプ	IgG

アプリケーション

The Abpromise guarantee Abpromise保証は、次のテスト済みアプリケーションにおけるab129080の使用に適用されます
アプリケーションノートには、推奨の開始希釈率がありますが、適切な希釈率につきましてはご検討ください。

アプリケーション	Abreviews	特記事項
WB		1/1000 - 1/10000. Detects a band of approximately 74 kDa (predicted molecular weight: 68 kDa).
IHC-P		1/50 - 1/100. Perform heat mediated antigen retrieval with citrate buffer pH 6 before commencing with IHC staining protocol.
ICC/IF		1/100 - 1/250.

追加情報 Is unsuitable for Flow Cyt.

ターゲット情報

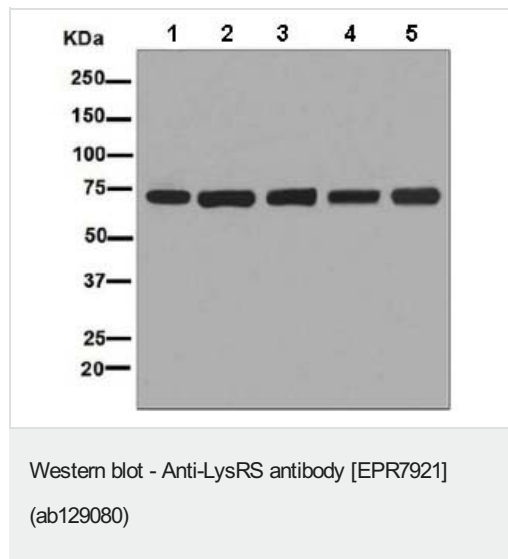
機能	Catalyzes the specific attachment of an amino acid to its cognate tRNA in a 2 step reaction: the amino acid (AA) is first activated by ATP to form AA-AMP and then transferred to the acceptor end of the tRNA. When secreted, acts as a signaling molecule that induces immune response through the activation of monocyte/macrophages. Catalyzes the synthesis of diadenosine oligophosphate (Ap4A), a signaling molecule involved in the activation of MITF transcriptional activity. Interacts with HIV-1 virus GAG protein, facilitating the selective packaging of tRNA(3) (Lys), the primer for reverse transcription initiation.
関連疾患	Defects in KARS are the cause of Charcot-Marie-Tooth disease recessive intermediate type B (CMTRIB) [MIM:613641]; also called Charcot-Marie-Tooth neuropathy recessive intermediate B. CMTRIB is a form of Charcot-Marie-Tooth disease, a disorder of the peripheral nervous system, characterized by progressive weakness and atrophy, initially of the peroneal muscles and later of the distal muscles of the arms. Recessive intermediate forms of Charcot-Marie-Tooth disease are characterized by clinical and pathologic features intermediate between demyelinating and axonal peripheral neuropathies, and motor median nerve conduction velocities ranging from 25 to 45 m/sec.
配列類似性	Belongs to the class-II aminoacyl-tRNA synthetase family.
ドメイン	The N-terminal domain (1-65) of the cytoplasmic isoform is a functional tRNA-binding domain (By similarity), is required for nuclear localization, is involved in the interaction with DARS, but has a repulsive role in the binding to EEF1A1. A central domain (208-259) is involved in homodimerization and is required for interaction with HIV-1 GAG and incorporation into virions.

細胞内局在

The C-terminal domain (452-597) is not required for interaction with AIMP2.

Mitochondrion and Cytoplasm. Nucleus. Cell membrane. Secreted. Secretion is induced by TNF- α .

画像



All lanes : Anti-LysRS antibody [EPR7921] (ab129080) at 1/1000 dilution

Lane 1 : Jurkat cell lysate

Lane 2 : HeLa cell lysate

Lane 3 : 293T cell lysate

Lane 4 : HepG2 cell lysate

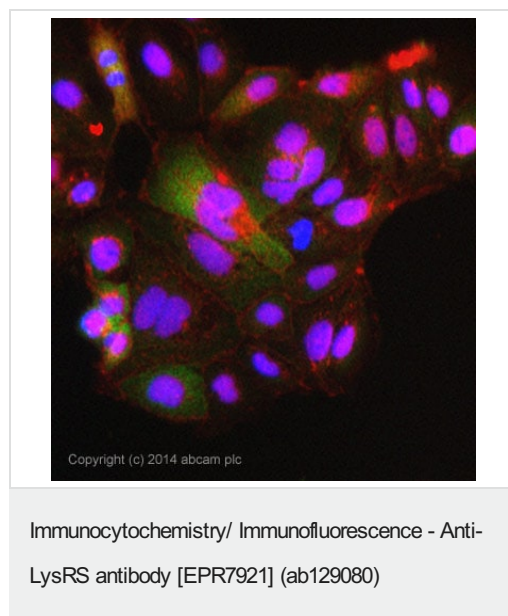
Lane 5 : Caco-2 cell lysate

Lysates/proteins at 10 μ g per lane.

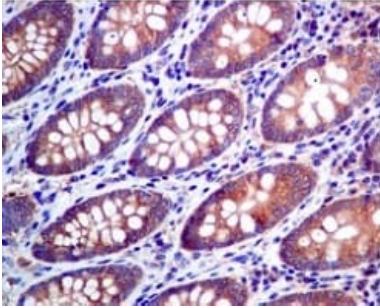
Secondary

All lanes : HRP labelled goat anti-rabbit at 1/2000 dilution

Predicted band size: 68 kDa



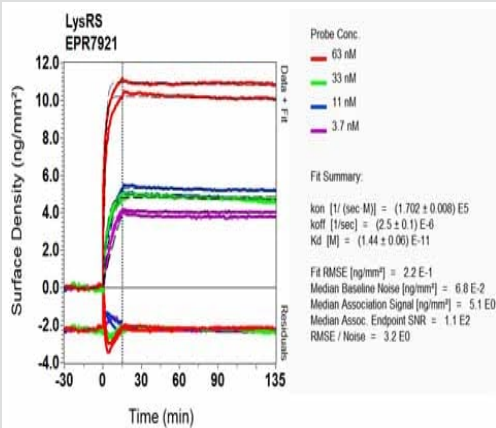
ICC/IF image of ab129080 stained CACO-2 cells. The cells were 100% methanol fixed (5 min) and then incubated in 1%BSA / 10% normal goat serum / 0.3M glycine in 0.1% PBS-Tween for 1h to permeabilise the cells and block non-specific protein-protein interactions. The cells were then incubated with the antibody ab129080 at 1/200 dilution overnight at +4°C. The secondary antibody (pseudo-colored green) was Alexa Fluor® 488 goat anti-rabbit (**ab150081**) IgG (H+L) preadsorbed, used at a 1/1000 dilution for 1h. Alexa Fluor® 594 WGA was used to label plasma membranes (pseudo-colored red) at a 1/200 dilution for 1h at room temperature. DAPI was used to stain the cell nuclei (pseudo-colored blue) at a concentration of 1.43 μ M for 1 hour at room temperature.



Immunohistochemistry (Formalin/PFA-fixed paraffin-embedded sections) - Anti-LysRS antibody [EPR7921] (ab129080)

ab129080, at a dilution of 1/50, staining LysRS in paraffin embedded Human colon tissue by immunohistochemistry.

Perform heat mediated antigen retrieval with citrate buffer pH 6 before commencing with IHC staining protocol.



Ox-LD Scanning - Anti-LysRS antibody [EPR7921] (ab129080)

Equilibrium disassociation constant (K_D)

Learn more about K_D

[Click here to learn more about \$K_D\$](#)

Why choose a recombinant antibody?



Research with confidence
Consistent and reproducible results



Long-term and scalable supply
Recombinant technology



Success from the first experiment
Confirmed specificity



Ethical standards compliant
Animal-free production

Anti-LysRS antibody [EPR7921] (ab129080)

Please note: All products are "FOR RESEARCH USE ONLY. NOT FOR USE IN DIAGNOSTIC PROCEDURES"

Our Abpromise to you: Quality guaranteed and expert technical support

- Replacement or refund for products not performing as stated on the datasheet
- Valid for 12 months from date of delivery
- Response to your inquiry within 24 hours
- We provide support in Chinese, English, French, German, Japanese and Spanish
- Extensive multi-media technical resources to help you
- We investigate all quality concerns to ensure our products perform to the highest standards

If the product does not perform as described on this datasheet, we will offer a refund or replacement. For full details of the Abpromise, please visit <https://www.abcam.co.jp/abpromise> or contact our technical team.

Terms and conditions

- Guarantee only valid for products bought direct from Abcam or one of our authorized distributors