

Anti-Lysozyme antibody [SP350] - BSA and Azide free ab242430

KO 評価済 リコンビナント RabMAb

画像数 10

製品の概要

| | |
|--------------|--|
| 製品名 | Anti-Lysozyme antibody [SP350] - BSA and Azide free |
| 製品の詳細 | Rabbit monoclonal [SP350] to Lysozyme - BSA and Azide free |
| 由来種 | Rabbit |
| アプリケーション | 適用あり: Flow Cyt (Intra), mIHC, WB, IHC-P |
| 種交差性 | 交差種: Human |
| 免疫原 | Synthetic peptide within Human Lysozyme (C terminal). The exact sequence is proprietary. Database link: P61626 |
| ポジティブ・コントロール | WB: HAP1, HepG2 and HL-60 whole cell lysate. IHC-P: Human tonsil, lung, liver, spleen, stomach adenocarcinoma and pancreatic adenocarcinoma tissues. Flow Cyt (intra): HL-60 cells. mIHC: Human duodenum tissue. |
| 特記事項 | ab242430 is the carrier-free version of ab227708 . |

Our **carrier-free** antibodies are typically supplied in a PBS-only formulation, purified and free of BSA, sodium azide and glycerol. The carrier-free buffer and high concentration allow for increased conjugation efficiency.

This conjugation-ready format is designed for use with fluorochromes, metal isotopes, oligonucleotides, and enzymes, which makes them ideal for antibody labelling, functional and cell-based assays, flow-based assays (e.g. mass cytometry) and Multiplex Imaging applications.

Use our **conjugation kits** for antibody conjugates that are ready-to-use in as little as 20 minutes with <1 minute hands-on-time and 100% antibody recovery: available for fluorescent dyes, HRP, biotin and gold.

This product is compatible with the Maxpar[®] Antibody Labeling Kit from Fluidigm, without the need for antibody preparation. Maxpar[®] is a trademark of Fluidigm Canada Inc.

This product is a recombinant monoclonal antibody, which offers several advantages including:

- High batch-to-batch consistency and reproducibility
- Improved sensitivity and specificity
- Long-term security of supply
- Animal-free production

For more information [see here](#).

This product is FOR RESEARCH USE ONLY. For commercial use, please contact partnerships@abcam.com.

製品の特性

| | |
|----------|---|
| 製品の状態 | Liquid |
| 保存方法 | Shipped at 4°C. Store at +4°C. Do Not Freeze. |
| バッファー | pH: 7.20 Constituent: PBS |
| キャリア・フリー | はい |
| 精製度 | Protein A/G purified |
| 特記事項(精製) | Purified from TCS by protein A/G. |
| ポリ/モノ | モノクローナル |
| クローン名 | SP350 |
| アイソタイプ | IgG |

アプリケーション

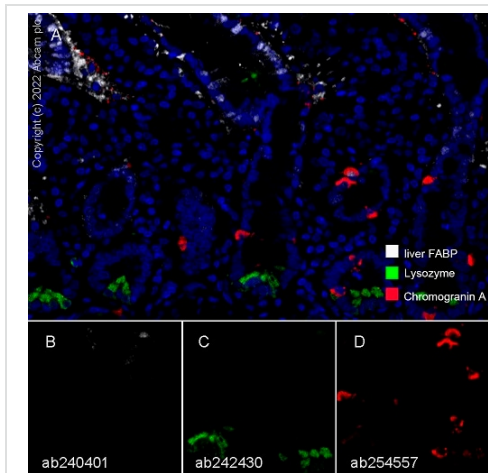
The Abpromise guarantee **Abpromise保証は、**次のテスト済みアプリケーションにおけるab242430の使用に適用されます
アプリケーションノートには、推奨の開始希釈率がありますが、適切な希釈率につきましてはご検討ください。

| アプリケーション | Abreviews | 特記事項 |
|------------------|-----------|--|
| Flow Cyt (Intra) | | Use at an assay dependent concentration. |
| mlHC | | Use at an assay dependent concentration. |
| WB | | Use at an assay dependent concentration. Predicted molecular weight: 16 kDa. |
| IHC-P | | Use at an assay dependent concentration. Perform heat mediated antigen retrieval with Tris/EDTA buffer pH 8.0 before commencing with IHC staining protocol. |

ターゲット情報

| | |
|-------|--|
| 機能 | Lysozymes have primarily a bacteriolytic function; those in tissues and body fluids are associated with the monocyte-macrophage system and enhance the activity of immunoagents. |
| 関連疾患 | Amyloidosis 8 |
| 配列類似性 | Belongs to the glycosyl hydrolase 22 family. |
| 細胞内局在 | Secreted. |

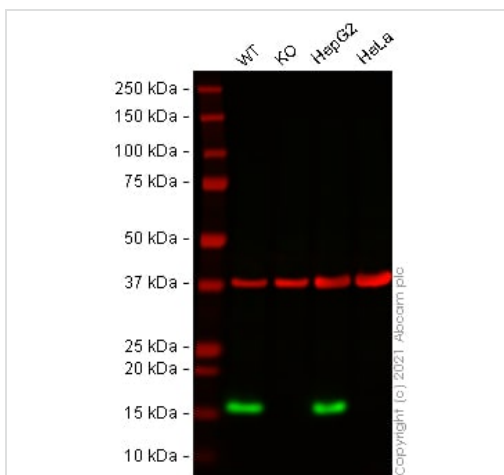
画像



Multiplex immunohistochemistry - Anti-Lysozyme antibody [SP350] - BSA and Azide free (ab242430)

Fluorescence multiplex immunohistochemical analysis of the human duodenum (Formalin/PFA-fixed paraffin-embedded sections). Panel A: merged staining of anti-liver FABP ([ab240401](#), gray; Opal™690), anti-Lysozyme ([ab242430](#), green; Opal™520) and anti-Chromogranin A ([ab254557](#), red; Opal™570) on human duodenum. Panel B: anti-liver FABP stained on enterocytes. Panel C: anti-Lysozyme stained on Paneth cells. Panel D: anti-Chromogranin A stained on neuroendocrine cells. Opal Polymer HRP Ms + Rb was used as a secondary antibody. The immunostaining was performed on a Leica Biosystems BOND® RX instrument with an Opal™ 4-color kit. The section was incubated in three rounds of staining: in the order of [ab240401](#) (1/8000 dilution), [ab242430](#) (1:250 dilution), and [ab254557](#) (1/5000 dilution) for 30 mins at room temperature. Each round was followed by a separate fluorescent tyramide signal amplification system. Heat mediated antigen retrieval with Tris-EDTA buffer (pH 9.0, epitope retrieval solution2) for 20 mins. DAPI (blue) was used as a nuclear counter stain. Image acquisition was performed with Leica SP8 confocal microscope.

This data was developed using the same antibody clone in a different buffer formulation ([ab227708](#)).



Western blot - Anti-Lysozyme antibody [SP350] - BSA and Azide free (ab242430)

All lanes : Anti-Lysozyme antibody [SP350] - C-terminal ([ab227708](#)) at 1/400 dilution

Lane 1 : Wild-type THP1 cell lysate

Lane 2 : LYZ knockout THP1 cell lysate

Lane 3 : HepG2 cell lysate

Lane 4 : HeLa cell lysate

Lysates/proteins at 20 µg per lane.

Performed under reducing conditions.

Predicted band size: 16 kDa

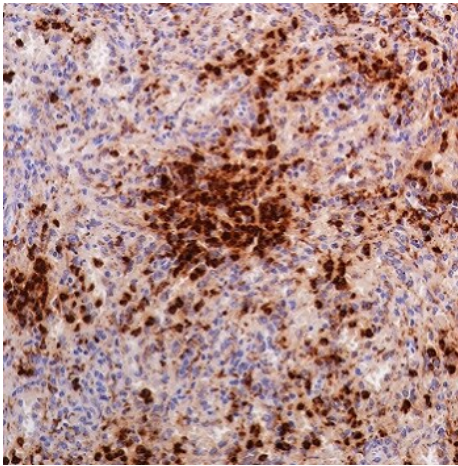
Observed band size: 16 kDa

This data was developed using the same antibody clone in a different buffer formulation ([ab227708](#)).

Lanes 1 - 4: Merged signal (red and green). Green - [ab227708](#)

observed at 16 kDa. Red - loading control **ab8245** (Mouse anti-GAPDH antibody [6C5]) observed at 37 kDa.

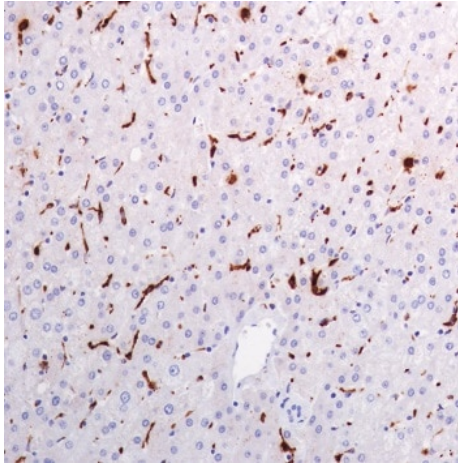
ab227708 was shown to react with Lysozyme in wild-type THP1 cells in Western blot with loss of signal observed in LYZ knockout sample. Wild-type THP1 and LYZ knockout cell lysates were subjected to SDS-PAGE. Membranes were blocked in 3 % milk in TBS-T (0.1 % Tween[®]) before incubation with **ab227708** and **ab8245** (Mouse anti-GAPDH antibody [6C5]) overnight at 4 °C at a 1 in 400 dilution and a 1 in 20000 dilution respectively. Blots were incubated with Goat anti-Rabbit IgG H&L (IRDye[®] 800CW) preabsorbed (**ab216773**) and Goat anti-Mouse IgG H&L (IRDye[®] 680RD) preabsorbed (**ab216776**) secondary antibodies at 1 in 20000 dilution for 1 h at room temperature before imaging.



Immunohistochemistry (Formalin/PFA-fixed paraffin-embedded sections) - Anti-Lysozyme antibody [SP350] - BSA and Azide free (ab242430)

Formalin-fixed, paraffin-embedded human spleen tissue stained for Lysozyme using **ab227708** at 1/100 dilution in immunohistochemical analysis.

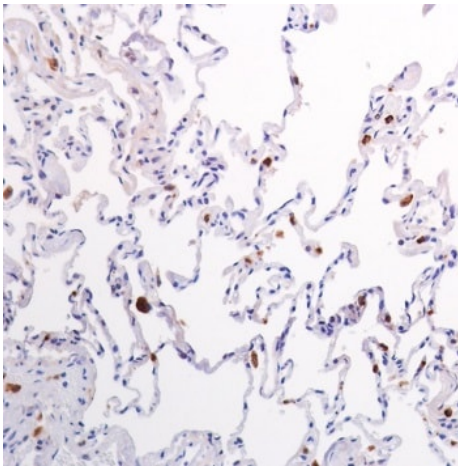
This data was developed using the same antibody clone in a different buffer formulation containing PBS, BSA, and sodium azide (**ab227708**).



Immunohistochemistry (Formalin/PFA-fixed paraffin-embedded sections) - Anti-Lysozyme antibody [SP350] - BSA and Azide free (ab242430)

Formalin-fixed, paraffin-embedded human liver tissue stained for Lysozyme using **ab227708** at 1/100 dilution in immunohistochemical analysis.

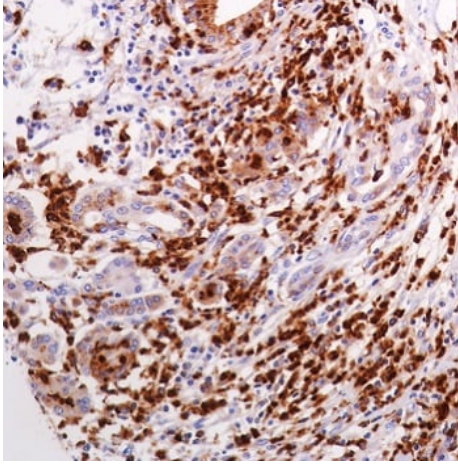
This data was developed using the same antibody clone in a different buffer formulation containing PBS, BSA, and sodium azide (**ab227708**).



Immunohistochemistry (Formalin/PFA-fixed paraffin-embedded sections) - Anti-Lysozyme antibody [SP350] - BSA and Azide free (ab242430)

Formalin-fixed, paraffin-embedded human lung tissue stained for Lysozyme using **ab227708** at 1/100 dilution in immunohistochemical analysis.

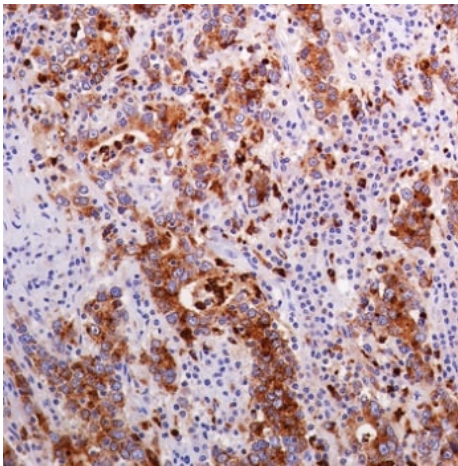
This data was developed using the same antibody clone in a different buffer formulation containing PBS, BSA, and sodium azide (**ab227708**).



Immunohistochemistry (Formalin/PFA-fixed paraffin-embedded sections) - Anti-Lysozyme antibody [SP350] - BSA and Azide free (ab242430)

Formalin-fixed, paraffin-embedded human pancreatic adenocarcinoma tissue stained for Lysozyme using **ab227708** at 1/100 dilution in immunohistochemical analysis.

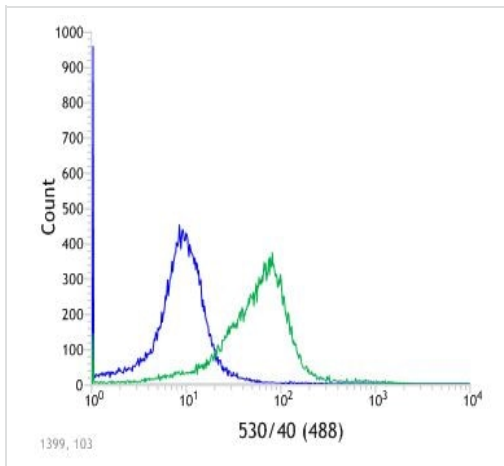
This data was developed using the same antibody clone in a different buffer formulation containing PBS, BSA, and sodium azide (**ab227708**).



Immunohistochemistry (Formalin/PFA-fixed paraffin-embedded sections) - Anti-Lysozyme antibody [SP350] - BSA and Azide free (ab242430)

Formalin-fixed, paraffin-embedded human stomach adenocarcinoma tissue stained for Lysozyme using **ab227708** at 1/100 dilution in immunohistochemical analysis.

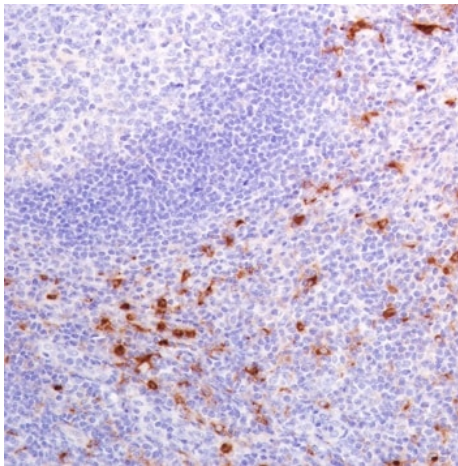
This data was developed using the same antibody clone in a different buffer formulation containing PBS, BSA, and sodium azide (**ab227708**).



Flow Cytometry (Intracellular) - Anti-Lysozyme antibody [SP350] - BSA and Azide free (ab242430)

Intracellular flow cytometric analysis of HL-60 (human promyelocytic leukemia cell line) cell line labeling Lysozyme with **ab227708** at 1/100 dilution (green) compared with a Rabbit IgG negative control (blue).

This data was developed using the same antibody clone in a different buffer formulation containing PBS, BSA, and sodium azide (**ab227708**).

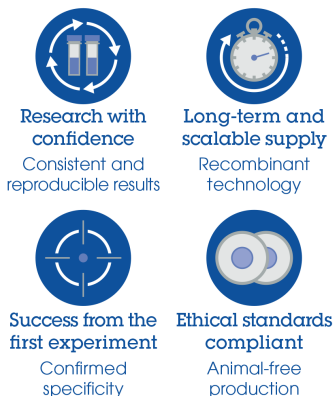


Immunohistochemistry (Formalin/PFA-fixed paraffin-embedded sections) - Anti-Lysozyme antibody [SP350] - BSA and Azide free (ab242430)

Formalin-fixed, paraffin-embedded human tonsil tissue stained for Lysozyme using **ab227708** at 1/100 dilution in immunohistochemical analysis.

This data was developed using the same antibody clone in a different buffer formulation containing PBS, BSA, and sodium azide (**ab227708**).

Why choose a recombinant antibody?



Anti-Lysozyme antibody [SP350] - BSA and Azide free (ab242430)

Please note: All products are "FOR RESEARCH USE ONLY. NOT FOR USE IN DIAGNOSTIC PROCEDURES"

Our Abpromise to you: Quality guaranteed and expert technical support

- Replacement or refund for products not performing as stated on the datasheet
- Valid for 12 months from date of delivery
- Response to your inquiry within 24 hours
- We provide support in Chinese, English, French, German, Japanese and Spanish
- Extensive multi-media technical resources to help you
- We investigate all quality concerns to ensure our products perform to the highest standards

If the product does not perform as described on this datasheet, we will offer a refund or replacement. For full details of the Abpromise, please visit <https://www.abcam.co.jp/abpromise> or contact our technical team.

Terms and conditions

- Guarantee only valid for products bought direct from Abcam or one of our authorized distributors