

# Anti-Lysozyme antibody [LZ598-10G9] ab234194

画像数 3

### 製品の概要

製品名	Anti-Lysozyme antibody [LZ598-10G9]
製品の詳細	Mouse monoclonal [LZ598-10G9] to Lysozyme
由来種	Mouse
アプリケーション	<b>適用あり:</b> Flow Cyt (Intra), ICC/IF
種交差性	<b>交差種:</b> Human
免疫原	Full length protein corresponding to Human Lysozyme. Database link: <b><u>P61626</u></b>
ポジティブ・コントロール	ICC/IF: HepG2 cells; Flow Cyt (Intra): Human peripheral blood.
特記事項	<p>The Life Science industry has been in the grips of a reproducibility crisis for a number of years. Abcam is leading the way in addressing this with our range of recombinant monoclonal antibodies and knockout edited cell lines for gold-standard validation. Please check that this product meets your needs before purchasing.</p> <p>If you have any questions, special requirements or concerns, please send us an inquiry and/or contact our Support team ahead of purchase. Recommended alternatives for this product can be found below, along with publications, customer reviews and Q&amp;As</p>

### 製品の特性

製品の状態	Liquid
保存方法	Shipped at 4°C. Store at +4°C short term (1-2 weeks). Upon delivery aliquot. Store at -20°C long term. Avoid freeze / thaw cycle.
バッファー	pH: 7.40 Preservative: 0.0975% Sodium azide Constituent: PBS
精製度	Protein A purified
特記事項 (精製)	Purity is >95% by SDS-PAGE.
ポリ/モノ	モノクローナル
クローン名	LZ598-10G9
アイソタイプ	IgG1

## アプリケーション

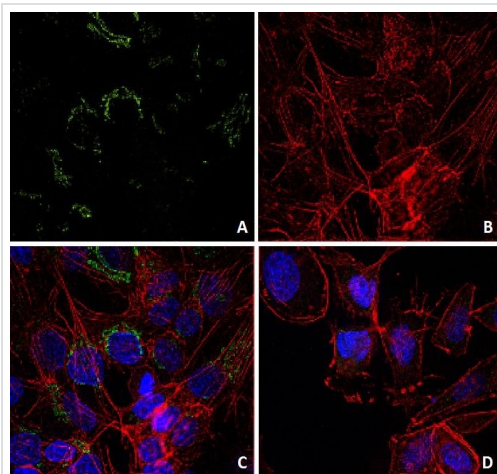
**The Abpromise guarantee** Abpromise保証は、 次のテスト済みアプリケーションにおけるab234194の使用に適用されます  
アプリケーションノートには、推奨の開始希釈率がありますが、適切な希釈率につきましてはご検討ください。

アプリケーション	Abreviews	特記事項
Flow Cyt (Intra)		Use a concentration of 1 - 12 µg/ml.
ICC/IF		Use at an assay dependent concentration.

## ターゲット情報

機能	Lysozymes have primarily a bacteriolytic function; those in tissues and body fluids are associated with the monocyte-macrophage system and enhance the activity of immunoagents.
関連疾患	Amyloidosis 8
配列類似性	Belongs to the glycosyl hydrolase 22 family.
細胞内局在	Secreted.

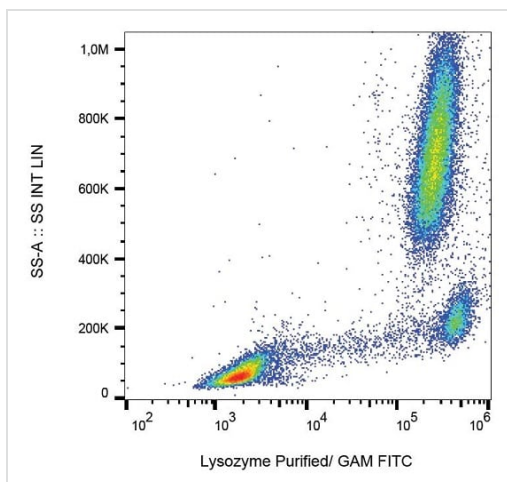
## 画像



Immunocytochemistry analysis of HepG2 (human liver hepatocellular carcinoma cell line) cells (Images A, B, C) labeling Lysozyme with ab234194. Actin decorated with phalloidin (red), DNA stained with DAPI (blue).

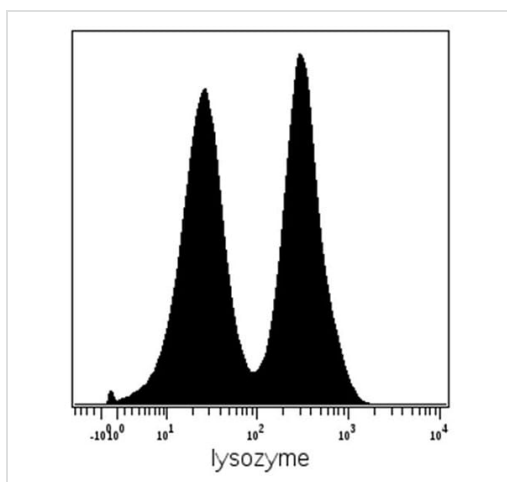
Image D: SK-BR-3 (human mammary gland adenocarcinoma cell line) cells with no expression of lysozyme, stained with ab234194 (no background signal).

Immunocytochemistry/ Immunofluorescence - Anti-Lysozyme antibody [LZ598-10G9] (ab234194)



Intracellular staining of Lysozyme in human peripheral blood with ab234194 followed by a Goat anti-mouse-FITC conjugated secondary.

Flow Cytometry (Intracellular) - Anti-Lysozyme antibody [LZ598-10G9] (ab234194)



Intracellular staining (mass cytometry) of PBMC (after Ficoll-Paque separation) with ab234194. Gated on native.

Flow Cytometry (Intracellular) - Anti-Lysozyme antibody [LZ598-10G9] (ab234194)

**Please note:** All products are "FOR RESEARCH USE ONLY. NOT FOR USE IN DIAGNOSTIC PROCEDURES"

**Our Abpromise to you: Quality guaranteed and expert technical support**

- Replacement or refund for products not performing as stated on the datasheet

- Valid for 12 months from date of delivery
- Response to your inquiry within 24 hours
- We provide support in Chinese, English, French, German, Japanese and Spanish
- Extensive multi-media technical resources to help you
- We investigate all quality concerns to ensure our products perform to the highest standards

If the product does not perform as described on this datasheet, we will offer a refund or replacement. For full details of the Abpromise, please visit <https://www.abcam.co.jp/abpromise> or contact our technical team.

#### **Terms and conditions**

---

- Guarantee only valid for products bought direct from Abcam or one of our authorized distributors