

Anti-Lyn antibody [LYN-01] ab1890

★★★★☆ **6 Abreviews** **18 References** 画像数 **4**

製品の概要

製品名	Anti-Lyn antibody [LYN-01]
製品の詳細	Mouse monoclonal [LYN-01] to Lyn
由来種	Mouse
アプリケーション	適用あり: Flow Cyt, WB
種交差性	交差種: Rat, Human
免疫原	Recombinant fragment corresponding to Human Lyn aa 1-250.

 [Run BLAST with ExPASy](#)  [Run BLAST with NCBI](#)

特記事項

Lyn is a member of the src family of non-receptor protein tyrosine kinases that is predominantly expressed in haematopoietic tissues. Like all members of the src family, lyn is thought to participate in signal transduction from cell surface receptors that lack intrinsic tyrosine kinase activity. It is associated with a number of cell surface receptors including the B cell antigen receptor and immunoglobulin E receptor (FcεRI).

The Life Science industry has been in the grips of a reproducibility crisis for a number of years. Abcam is leading the way in addressing this with our range of recombinant monoclonal antibodies and knockout edited cell lines for gold-standard validation. Please check that this product meets your needs before purchasing.

If you have any questions, special requirements or concerns, please send us an inquiry and/or contact our Support team ahead of purchase. Recommended alternatives for this product can be found below, along with publications, customer reviews and Q&As

製品の特性

製品の状態	Liquid
保存方法	Shipped at 4°C. Store at +4°C short term (1-2 weeks). Upon delivery aliquot. Store at -20°C or -80°C. Avoid freeze / thaw cycle.
バッファー	pH: 7.4 Preservative: 0.097% Sodium azide Constituent: PBS
精製度	Protein A purified
特記事項 (精製)	Purified from hybridoma culture supernatant. Purity >95% by SDS-PAGE.

一次抗体 備考

Lyn is a member of the src family of non-receptor protein tyrosine kinases that is predominantly expressed in haematopoietic tissues. Like all members of the src family, lyn is thought to participate in signal transduction from cell surface receptors that lack intrinsic tyrosine kinase activity. It is associated with a number of cell surface receptors including the B cell antigen receptor and immunoglobulin E receptor (FcεRI).

ポリモノ

モノクローナル

クローン名

LYN-01

アイソタイプ

IgG1

アプリケーション

The Abpromise guarantee

Abpromise保証は、次のテスト済みアプリケーションにおけるab1890の使用に適用されます

アプリケーションノートには、推奨の開始希釈率がありますが、適切な希釈率につきましてはご確認ください。

アプリケーション	Abreviews	特記事項
Flow Cyt	★★★★★ (1)	Use 1 µg for 10 ⁶ cells. ab170190 - Mouse monoclonal IgG1, is suitable for use as an isotype control with this antibody.
WB	★★★★★ (3)	Use a concentration of 1 - 2 µg/ml. Predicted molecular weight: 58 kDa.

ターゲット情報

機能

Down regulates expression of stem cell growth factor receptor (KIT). Acts as an effector of EpoR (erythropoietin receptor) in controlling KIT expression and may play a central role in erythroid differentiation during the switch between proliferation and maturation (By similarity). Acts as a positive regulator of cell movement while negatively regulating adhesion to stromal cells by inhibiting the ICAM-1-binding activity of beta-2 integrins. Acts as the mediator that relays suppressing signals from the chemokine receptor CXCR4 to beta-2 integrin LFA-1 in hematopoietic precursors. Involved in induction of stress-activated protein kinase (SAPK), but not ERK or p38 MAPK, in response to genotoxic agents. Induces SAPK by a MKK7- and MEKK1-dependent mechanism. The LYN -> MEKK1 -> MKK7 -> SAPK pathway is functional in the induction of apoptosis by genotoxic agents.

組織特異性

Widely expressed in a variety of organs, tissues, and cell types such as epidermoid, hematopoietic, and neuronal cells. Expressed in primary neuroblastoma tumors.

配列類似性

Belongs to the protein kinase superfamily. Tyr protein kinase family. SRC subfamily. Contains 1 protein kinase domain. Contains 1 SH2 domain. Contains 1 SH3 domain.

ドメイン

The protein kinase domain plays an important role in its localization in the cell membrane.

翻訳後修飾

Ubiquitinated. Ubiquitination is SH3-dependent.

細胞内局在

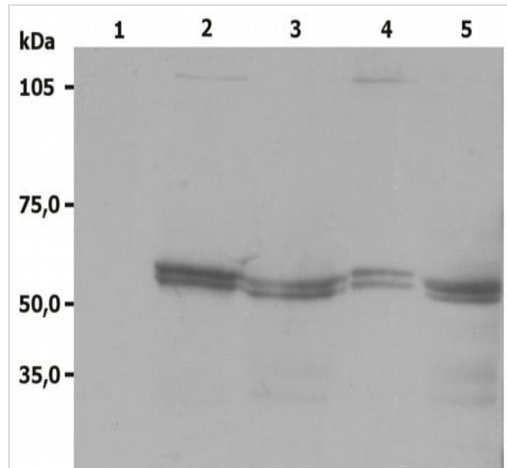
Cell membrane. Nucleus. Cytoplasm. Cytoplasm > perinuclear region. Golgi apparatus. Accumulates in the nucleus by inhibition of CRM1-mediated nuclear export. Nuclear accumulation is increased by inhibition of its kinase activity. The trafficking from the Golgi apparatus to the plasma membrane occurs in a kinase domain-dependent but kinase activity independent manner

and is mediated by exocytic vesicular transport.

製品の状態

This protein is known to be similar in amino acid sequence to HCK (P08631), LCK (P06239), FYN (P06241), YES1 (P07947), and SRC (P12931). Therefore, cross-reactivity with these homologous proteins may be observed. We would be happy to provide immunogen alignment information upon request.

画像



Western blot - Anti-Lyn antibody [LYN-01] (ab1890)

All lanes : Anti-Lyn antibody [LYN-01] (ab1890) at 1 µg/ml

Lane 1 : Negative control

Lane 2 : Rat basophilic leukemia cell line

Lane 3 : JURKAT human peripheral blood T cell leukemia cell line

Lane 4 : A-431 human epidermoid carcinoma cell line

Lane 5 : U-937 human histiocytic lymphoma cell line

Predicted band size: 58 kDa

Non reducing conditions with 60 minutes exposure time in a 12% gel



Western blot - Anti-Lyn antibody [LYN-01] (ab1890)

Anti-Lyn antibody [LYN-01] (ab1890) at 1/1000 dilution +
Recombinant human Lyn protein ([ab60306](#)) at 0.01 µg

Secondary

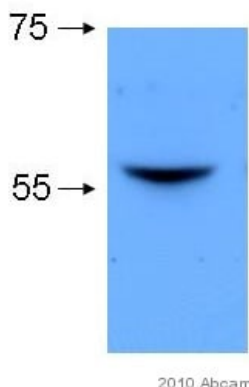
Goat Anti-Mouse IgG H&L (HRP) preadsorbed ([ab97040](#)) at
1/3000 dilution

Developed using the ECL technique.

Performed under reducing conditions.

Predicted band size: 58 kDa

Exposure time: 4 minutes



Western blot - Anti-Lyn antibody [LYN-01] (ab1890)
Image courtesy of an anonymous Abreview.

Anti-Lyn antibody [LYN-01] (ab1890) at 1/1000 dilution + HEK-293 (Human epithelial cell line from embryonic kidney) whole cell lysate at 50 µg

Secondary

HRP-conjugated anti-mouse at 1/10000 dilution

Predicted band size: 58 kDa

Observed band size: 56 kDa

Flow Cytometry - Anti-Lyn antibody [LYN-01] (ab1890)

Overlay histogram showing Ramos (Human Burkitt's lymphoma cell line) cells stained with ab1890 (red line). The cells were fixed with 80% methanol (5 min) and then permeabilized with 0.1% PBS-Tween for 20 min. The cells were then incubated in 1x PBS / 10% normal goat serum / 0.3M glycine to block non-specific protein-protein interactions followed by the antibody (ab1890, 1µg/1x10⁶ cells) for 30 min at 22°C. The secondary antibody used was DyLight® 488 goat anti-mouse IgG (H+L) ([ab96879](#)) at 1/500 dilution for 30 min at 22°C. Isotype control antibody (black line) was mouse IgG1 [ICIGG1] ([ab91353](#), 2µg/1x10⁶ cells) used under the same conditions. Acquisition of >5,000 events was performed. This antibody gave a positive signal in Ramos cells fixed with 4% paraformaldehyde (10 min)/permeabilized with 0.1% PBS-Tween for 20 min used under the same conditions.

Please note: All products are "FOR RESEARCH USE ONLY. NOT FOR USE IN DIAGNOSTIC PROCEDURES"

Our Abpromise to you: Quality guaranteed and expert technical support

- Replacement or refund for products not performing as stated on the datasheet
- Valid for 12 months from date of delivery
- Response to your inquiry within 24 hours
- We provide support in Chinese, English, French, German, Japanese and Spanish
- Extensive multi-media technical resources to help you

- We investigate all quality concerns to ensure our products perform to the highest standards

If the product does not perform as described on this datasheet, we will offer a refund or replacement. For full details of the Abpromise, please visit <https://www.abcam.co.jp/abpromise> or contact our technical team.

Terms and conditions

- Guarantee only valid for products bought direct from Abcam or one of our authorized distributors