

Anti-Ly6g + Ly6c antibody [RB6-8C5] ab25377

★★★★★ [5 Abreviews](#) [172 References](#) [画像数 1](#)

製品の概要

製品名	Anti-Ly6g + Ly6c antibody [RB6-8C5]
製品の詳細	Rat monoclonal [RB6-8C5] to Ly6g + Ly6c
由来種	Rat
アプリケーション	適用あり: IHC-Fr, Flow Cyt, IHC-P
種交差性	交差種: Mouse
免疫原	<p>This product was produced with the following immunogens:</p> <p>Tissue, cells or virus corresponding to Mouse Ly6g. Database link: P35461</p> <p>Tissue, cells or virus corresponding to Mouse Ly6c. Database link: P0CW02</p>
特記事項	<p>This product was changed from ascites to tissue culture supernatant on 2nd March 2020. Lot numbers higher than GR3218400 are from tissue culture supernatant. Please note that the dilutions may need to be adjusted accordingly. If you have any questions, please do not hesitate to contact our scientific support team.</p> <p>The Life Science industry has been in the grips of a reproducibility crisis for a number of years. Abcam is leading the way in addressing this with our range of recombinant monoclonal antibodies and knockout edited cell lines for gold-standard validation. Please check that this product meets your needs before purchasing.</p> <p>If you have any questions, special requirements or concerns, please send us an inquiry and/or contact our Support team ahead of purchase. Recommended alternatives for this product can be found below, along with publications, customer reviews and Q&As</p>

製品の特性

製品の状態	Liquid
保存方法	Shipped at 4°C. Store at +4°C short term (1-2 weeks). Upon delivery aliquot. Store at -20°C long term. Avoid freeze / thaw cycle.
バッファー	pH: 8.20 Constituent: 100% Borate buffered saline
精製度	Tissue culture supernatant

ポリ/モノ	モノクローナル
クローン名	RB6-8C5
アイソタイプ	IgG2b
軽鎖の種類	kappa

アプリケーション

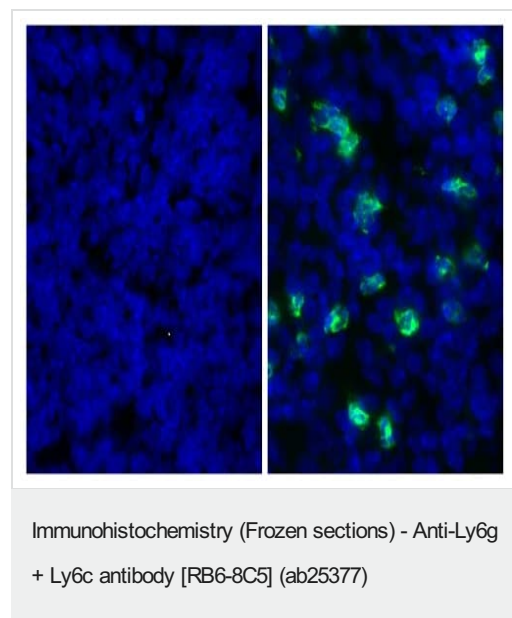
The Abpromise guarantee Abpromise保証は、次のテスト済みアプリケーションにおけるab25377の使用に適用されます
 アプリケーションノートには、推奨の開始希釈率がありますが、適切な希釈率につきましてはご検討ください。

アプリケーション	Abreviews	特記事項
IHC-Fr		Use at an assay dependent concentration.
Flow Cyt		Use at an assay dependent concentration.
IHC-P	★★★★★ (4)	Use at an assay dependent concentration. PubMed: 25126943

ターゲット情報

細胞内局在 Ly6g: Attached to the membrane by a GPI-anchor. Ly6c: Cell membrane; Lipid-anchor, GPI-anchor.

画像



Immunohistochemistry (Frozen sections) analysis of Mouse frozen spleen tissue labeling Ly6g with ab25377. Right: Rat Anti-Mouse Ly-6G-UNLB followed by Mouse Anti-Rat IgG2b-FITC. Left: Isotype Control, Rat IgG2b-UNLB followed by Mouse Anti-Rat IgG2b-FITC. Blue - DAPI.

This image was generated using the ascites version of the product.

Please note: All products are "FOR RESEARCH USE ONLY. NOT FOR USE IN DIAGNOSTIC PROCEDURES"

Our Abpromise to you: Quality guaranteed and expert technical support

- Replacement or refund for products not performing as stated on the datasheet
- Valid for 12 months from date of delivery
- Response to your inquiry within 24 hours

- We provide support in Chinese, English, French, German, Japanese and Spanish
- Extensive multi-media technical resources to help you
- We investigate all quality concerns to ensure our products perform to the highest standards

If the product does not perform as described on this datasheet, we will offer a refund or replacement. For full details of the Abpromise, please visit <https://www.abcam.co.jp/abpromise> or contact our technical team.

Terms and conditions

- Guarantee only valid for products bought direct from Abcam or one of our authorized distributors