

### Anti-Ly6c antibody [HK1.4] ab24973

★★★★☆ [2 Abreviews](#) [6 References](#) [画像数 1](#)

#### 製品の概要

製品名	Anti-Ly6c antibody [HK1.4]
製品の詳細	Rat monoclonal [HK1.4] to Ly6c
由来種	Rat
アプリケーション	<b>適用あり:</b> Flow Cyt
種交差性	<b>交差種:</b> Mouse
免疫原	Tissue, cells or virus corresponding to Ly6c. L3 cloned CTL cells
特記事項	<p>The Life Science industry has been in the grips of a reproducibility crisis for a number of years. Abcam is leading the way in addressing this with our range of recombinant monoclonal antibodies and knockout edited cell lines for gold-standard validation. Please check that this product meets your needs before purchasing.</p> <p>If you have any questions, special requirements or concerns, please send us an inquiry and/or contact our Support team ahead of purchase. Recommended alternatives for this product can be found below, along with publications, customer reviews and Q&amp;As</p>

#### 製品の特性

製品の状態	Liquid
保存方法	Shipped at 4°C. Store at +4°C short term (1-2 weeks). Upon delivery aliquot. Store at -20°C long term. Avoid freeze / thaw cycle.
バッファー	pH: 8.2
精製度	Affinity purified
ポリ/モノ	モノクローナル
クローン名	HK1.4
アイソタイプ	IgG2c
軽鎖の種類	kappa

#### アプリケーション

The Abpromise guarantee

Abpromise保証は、次のテスト済みアプリケーションにおけるab24973の使用に適用されません

アプリケーションノートには、推奨の開始希釈率がありますが、適切な希釈率につきましてはご確認ください。

アプリケーション	Abreviews	特記事項
Flow Cyt		

#### 追加情報

Cellular activation: Use at an assay dependent dilution.

Flow Cyt: Use 1 $\mu$ g for 10<sup>6</sup> cells.

IHC-Fr: Use at an assay dependent dilution.

Not yet tested in other applications.

Optimal dilutions/concentrations should be determined by the end user.

#### ターゲット情報

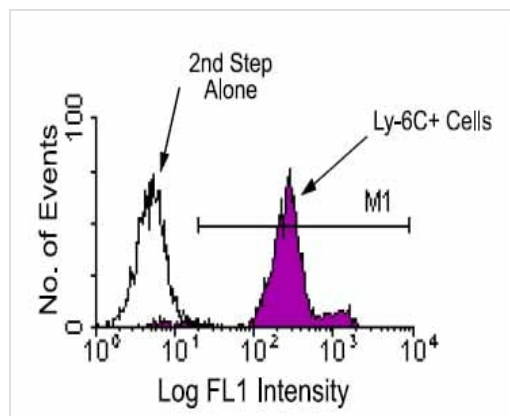
##### 関連性

Ly6C is a monocyte/macrophage and endothelial cell differentiation antigen regulated by interferon gamma, and may play a role in the development and maturation of lymphocytes. It is a member of the Ly6 multigene family of type V glycoposphatidylinositol anchored cell surface proteins. It is expressed on bone marrow cells, monocytes/macrophages, neutrophils, endothelial cells, and T cell subsets. Mice with the Ly6.2 allotype (e.g., AKR, C57BL, C57BR, C57L, DBA/2, PL, SJL, SWR, 129) have subsets of CD4+Ly6C+ and CD8+Ly6C+ cells, while Ly6.1 strains (e.g., A, BALB/c, CBA, C3H/He, DBA/1, NZB) have only CD8+Ly6C+ lymphocytes.

##### 細胞内局在

Cell membrane; Lipid-anchor, GPI-anchor.

#### 画像



Flow Cytometry - Anti-Ly6c antibody [HK1.4]  
(ab24973)

Bone marrow cells from C57BL/6 mice were labeled with ab24973 and then stained with goat anti-rat IgG-FITC. Large cells were gated and analyzed by flow cytometry.

**Please note:** All products are "FOR RESEARCH USE ONLY. NOT FOR USE IN DIAGNOSTIC PROCEDURES"

#### Our Abpromise to you: Quality guaranteed and expert technical support

- Replacement or refund for products not performing as stated on the datasheet
- Valid for 12 months from date of delivery

- Response to your inquiry within 24 hours
- We provide support in Chinese, English, French, German, Japanese and Spanish
- Extensive multi-media technical resources to help you
- We investigate all quality concerns to ensure our products perform to the highest standards

If the product does not perform as described on this datasheet, we will offer a refund or replacement. For full details of the Abpromise, please visit <https://www.abcam.co.jp/abpromise> or contact our technical team.

### **Terms and conditions**

---

- Guarantee only valid for products bought direct from Abcam or one of our authorized distributors