

Anti-LTV1 antibody ab122100

★★★★☆ [1 Abreviews](#) [2 References](#) [画像数 3](#)

製品の概要

製品名	Anti-LTV1 antibody
製品の詳細	Rabbit polyclonal to LTV1
由来種	Rabbit
アプリケーション	適用あり: IHC-P, WB, ICC/IF
種交差性	交差種: Human
免疫原	antigen sequence: LEGSIQVDSN RLQEVLNDDY KEKAENCVKL NTLEPLEDQD LPMNELDESE EEEMITVLE EAKEKWDCEG ICSTYSNLYN HPQLIKYQPK PKQ, corresponding to amino acids of Human LTV1. Run BLAST with ExPASy Run BLAST with NCBI
ポジティブ・コントロール	Human placenta tissue; RT 4, U 251 MG and Human tonsil lysates; U 251MG cells.
特記事項	<p>The Life Science industry has been in the grips of a reproducibility crisis for a number of years. Abcam is leading the way in addressing this with our range of recombinant monoclonal antibodies and knockout edited cell lines for gold-standard validation. Please check that this product meets your needs before purchasing.</p> <p>If you have any questions, special requirements or concerns, please send us an inquiry and/or contact our Support team ahead of purchase. Recommended alternatives for this product can be found below, along with publications, customer reviews and Q&As</p>

製品の特性

製品の状態	Liquid
保存方法	Shipped at 4°C. Upon delivery aliquot and store at -20°C. Avoid freeze / thaw cycles.
バッファー	pH: 7.20 Preservative: 0.02% Sodium azide Constituents: 59% PBS, 40% Glycerol (glycerin, glycerine)
精製度	Immunogen affinity purified
ポリ/モノ	ポリクローナル
アイソタイプ	IgG

アプリケーション

The Abpromise guarantee

Abpromise保証は、次のテスト済みアプリケーションにおけるab122100の使用に適用されます

アプリケーションノートには、推奨の開始希釈率がありますが、適切な希釈率につきましてはご検討ください。

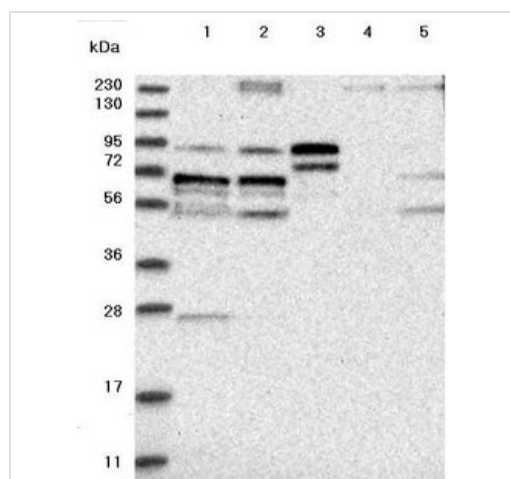
アプリケーション	Abreviews	特記事項
IHC-P		1/200 - 1/500. Perform heat mediated antigen retrieval with citrate buffer pH 6 before commencing with IHC staining protocol.
WB	★★★★★ (1)	Use a concentration of 0.04 - 0.4 µg/ml.
ICC/IF		Use a concentration of 0.25 - 2 µg/ml.

ターゲット情報

配列類似性

Belongs to the LTV1 family.

画像



Western blot - Anti-LTV1 antibody (ab122100)

All lanes : Anti-LTV1 antibody (ab122100) at 1/250 dilution

Lane 1 : RT 4 cell line lysate

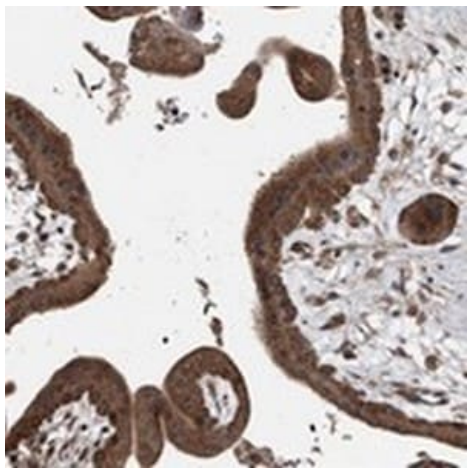
Lane 2 : U 251 MG cell line lysate

Lane 3 : Human plasma

Lane 4 : Human liver tissue lysate

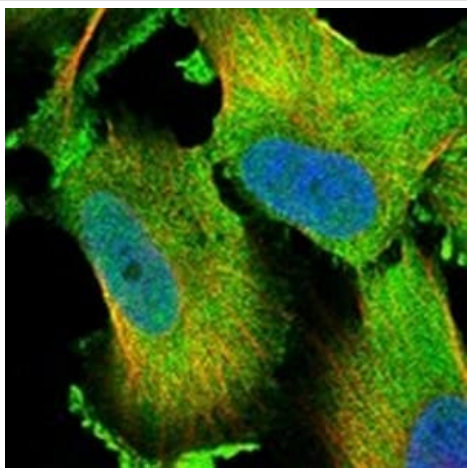
Lane 5 : Human tonsil tissue lysate

Developed using the ECL technique.



ab122100, at 1/200, staining LTV1 in paraffin embedded Human placenta tissue by Immunohistochemistry.

Immunohistochemistry (Formalin/PFA-fixed paraffin-embedded sections) - Anti-LTV1 antibody (ab122100)



ab122100, at 4 µg/ml, staining LTV1 in PFA/Triton X-100 fixed/permeabilized U 251 MG cells by Immunofluorescence (green).

Immunocytochemistry/ Immunofluorescence - Anti-LTV1 antibody (ab122100)

Please note: All products are "FOR RESEARCH USE ONLY. NOT FOR USE IN DIAGNOSTIC PROCEDURES"

Our Abpromise to you: Quality guaranteed and expert technical support

- Replacement or refund for products not performing as stated on the datasheet
- Valid for 12 months from date of delivery
- Response to your inquiry within 24 hours
- We provide support in Chinese, English, French, German, Japanese and Spanish
- Extensive multi-media technical resources to help you
- We investigate all quality concerns to ensure our products perform to the highest standards

If the product does not perform as described on this datasheet, we will offer a refund or replacement. For full details of the Abpromise, please visit <https://www.abcam.co.jp/abpromise> or contact our technical team.

Terms and conditions

- Guarantee only valid for products bought direct from Abcam or one of our authorized distributors