

Anti-LTB antibody ab64835

★☆☆☆☆ [1 Abreviews](#) [7 References](#) [画像数 2](#)

製品の概要

製品名	Anti-LTB antibody
製品の詳細	Rabbit polyclonal to LTB
由来種	Rabbit
特異性	ab64835 detects endogenous levels of total Lymphotoxin Beta protein.
アプリケーション	適用あり: ICC/IF, WB
種交差性	交差種: Human
免疫原	Synthetic peptide corresponding to Human LTB (C terminal).
特記事項	<p>The Life Science industry has been in the grips of a reproducibility crisis for a number of years. Abcam is leading the way in addressing this with our range of recombinant monoclonal antibodies and knockout edited cell lines for gold-standard validation. Please check that this product meets your needs before purchasing.</p> <p>If you have any questions, special requirements or concerns, please send us an inquiry and/or contact our Support team ahead of purchase. Recommended alternatives for this product can be found below, along with publications, customer reviews and Q&As</p>

製品の特性

製品の状態	Liquid
保存方法	Shipped at 4°C. Store at -20°C. Stable for 12 months at -20°C.
バッファー	<p>pH: 7.40</p> <p>Preservative: 0.02% Sodium azide</p> <p>Constituents: PBS, 50% Glycerol, 0.87% Sodium chloride</p> <p>Without Mg2+ and Ca2+</p>
精製度	Immunogen affinity purified
ポリ/モノ	ポリクローナル
アイソタイプ	IgG

アプリケーション

The Abpromise guarantee

Abpromise保証は、次のテスト済みアプリケーションにおけるab64835の使用に適用されます

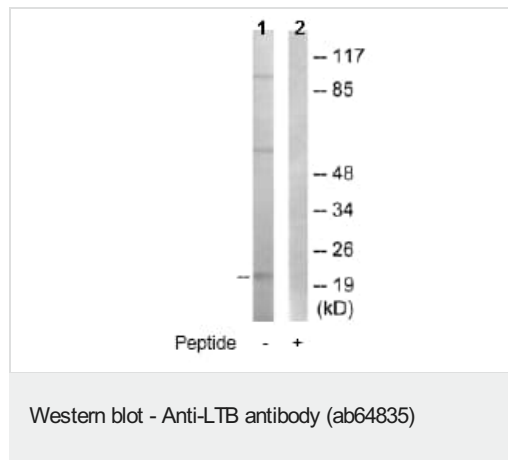
アプリケーションノートには、推奨の開始希釈率がありますが、適切な希釈率につきましてはご確認ください。

アプリケーション	Abreviews	特記事項
ICC/IF		1/500 - 1/1000.
WB		1/500 - 1/1000. Detects a band of approximately 25 kDa (predicted molecular weight: 25 kDa).

ターゲット情報

機能	Cytokine that binds to LTBR/TNFRSF3. May play a specific role in immune response regulation. Provides the membrane anchor for the attachment of the heterotrimeric complex to the cell surface. Isoform 2 is probably non-functional.
組織特異性	Spleen and thymus.
配列類似性	Belongs to the tumor necrosis factor family.
細胞内局在	Membrane.

画像



All lanes : Anti-LTB antibody (ab64835) at 1/500 dilution

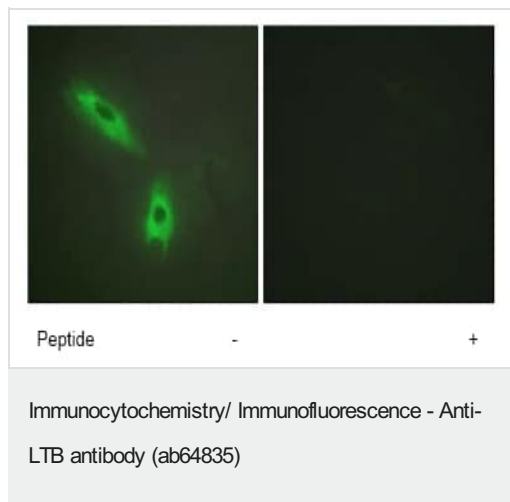
Lane 1 : HepG2 cell extract

Lane 2 : HepG2 cell extract with immunising peptide

Predicted band size: 25 kDa

Observed band size: 25 kDa

The amount of positive control loading for the WB is 5-30 ug of total protein. The amount of the peptide for the WB is 5-10 ug.



ab64835 at 1/500 - 1/1000 dilution staining Lymphotoxin Beta in HeLa cells by Immunofluorescence, in the absence (-) or presence (+) of the immunising peptide.

Please note: All products are "FOR RESEARCH USE ONLY. NOT FOR USE IN DIAGNOSTIC PROCEDURES"

Our Abpromise to you: Quality guaranteed and expert technical support

- Replacement or refund for products not performing as stated on the datasheet
- Valid for 12 months from date of delivery
- Response to your inquiry within 24 hours
- We provide support in Chinese, English, French, German, Japanese and Spanish
- Extensive multi-media technical resources to help you
- We investigate all quality concerns to ensure our products perform to the highest standards

If the product does not perform as described on this datasheet, we will offer a refund or replacement. For full details of the Abpromise, please visit <https://www.abcam.co.jp/abpromise> or contact our technical team.

Terms and conditions

- Guarantee only valid for products bought direct from Abcam or one of our authorized distributors