


Anti-LRPPRC/GP130 antibody ab97505

★★★★★ [1 Abreviews](#) [13 References](#) [画像数 4](#)

製品の概要

製品名	Anti-LRPPRC/GP130 antibody
製品の詳細	Rabbit polyclonal to LRPPRC/GP130
由来種	Rabbit
アプリケーション	適用あり: WB, IHC-P, ICC/IF
種交差性	交差種: Human 交差が予測される動物種: Rat 
免疫原	Recombinant fragment corresponding to Human LRPPRC/GP130 aa 611-907. Database link: P42704
ポジティブ・コントロール	WB: H1299, HeLa whole cell lysate. IHC-P: SW480 Xenograft, human colon cancer tissue. ICC/IF: HeLa cells
特記事項	<p>The Life Science industry has been in the grips of a reproducibility crisis for a number of years. Abcam is leading the way in addressing this with our range of recombinant monoclonal antibodies and knockout edited cell lines for gold-standard validation. Please check that this product meets your needs before purchasing.</p> <p>If you have any questions, special requirements or concerns, please send us an inquiry and/or contact our Support team ahead of purchase. Recommended alternatives for this product can be found below, along with publications, customer reviews and Q&As</p>

製品の特性

製品の状態	Liquid
保存方法	Shipped at 4°C. Store at +4°C short term (1-2 weeks). Upon delivery aliquot. Store at -20°C or -80°C. Avoid freeze / thaw cycle.
バッファー	pH: 7.00 Preservative: 0.025% Proclin 300 Constituents: 78% PBS, 1% BSA, 20% Glycerol (glycerin, glycerine)
精製度	Immunogen affinity purified
ポリ/モノ	ポリクローナル
アイソタイプ	IgG

アプリケーション

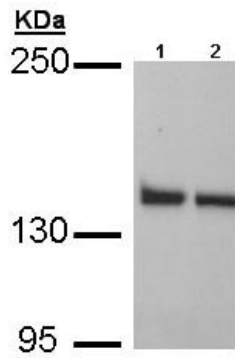
The Abpromise guarantee **Abpromise保証は、次のテスト済みアプリケーションにおけるab97505の使用に適用されず**
アプリケーションノートには、推奨の開始希釈率がありますが、適切な希釈率につきましてはご検討ください。

アプリケーション	Abreviews	特記事項
WB	★★★★★ (1)	1/500 - 1/10000. Predicted molecular weight: 158 kDa.
IHC-P		1/100 - 1/1000.
ICC/IF		1/100 - 1/1000.

ターゲット情報

機能	May play a role in RNA metabolism in both nuclei and mitochondria. In the nucleus binds to HNRPA1-associated poly(A) mRNAs and is part of nmRNP complexes at late stages of mRNA maturation which are possibly associated with nuclear mRNA export. May bind mature mRNA in the nucleus outer membrane. In mitochondria binds to poly(A) mRNA. Plays a role in translation or stability of mitochondrially encoded cytochrome c oxidase (COX) subunits. May be involved in transcription regulation. Cooperates with PPARGC1A to regulate certain mitochondrially encoded genes and gluconeogenic genes and may regulate docking of PPARGC1A to transcription factors. Seems to be involved in the transcription regulation of the multidrug-related genes MDR1 and MVP. Part of a nuclear factor that binds to the invMED1 element of MDR1 and MVP gene promoters. Binds single-stranded DNA.
組織特異性	Expressed ubiquitously. Expression is highest in heart, skeletal muscle, kidney and liver, intermediate in brain, non-mucosal colon, spleen and placenta, and lowest in small intestine, thymus, lung and peripheral blood leukocytes.
関連疾患	Leigh syndrome French-Canadian type
配列類似性	Contains 20 PPR (pentatricopeptide) repeats.
細胞内局在	Mitochondrion. Nucleus, nucleoplasm. Nucleus inner membrane. Nucleus outer membrane. Seems to be predominantly mitochondrial.

画像



Western blot - Anti-LRPPRC/GP130 antibody (ab97505)

All lanes : Anti-LRPPRC/GP130 antibody (ab97505) at 1/1000 dilution

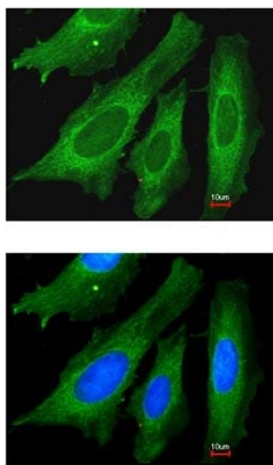
Lane 1 : H1299 whole cell lysate

Lane 2 : HeLa whole cell lysate

Lysates/proteins at 30 µg per lane.

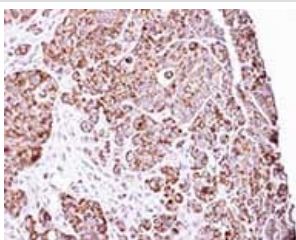
Predicted band size: 158 kDa

5% SDS-PAGE



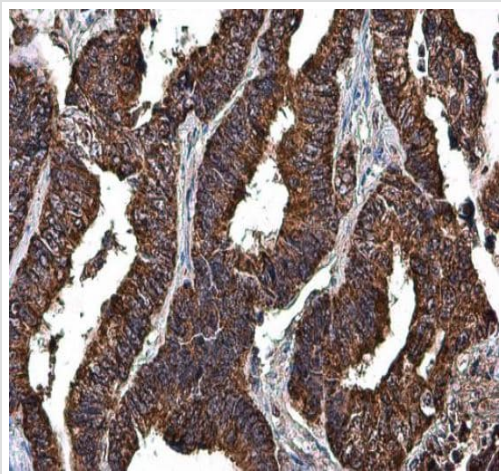
Immunocytochemistry/ Immunofluorescence - Anti-LRPPRC/GP130 antibody (ab97505)

Immunofluorescence analysis of paraformaldehyde-fixed HeLa using ab97505 at 1/200 dilution. Lower panel is also merged with DNA probe.



Immunohistochemistry (Formalin/PFA-fixed paraffin-embedded sections) - Anti-LRPPRC/GP130 antibody (ab97505)

Immunohistochemical analysis of paraffin-embedded SW480 Xenograft using ab97505 at 1/100 dilution.



Immunohistochemistry (Formalin/PFA-fixed paraffin-embedded sections) - Anti-LRPPRC/GP130 antibody (ab97505)

Paraffin embedded human colon cancer tissue stained for LRP130 using ab97505 at 1/100 at dilution in immunohistochemical analysis.

Please note: All products are "FOR RESEARCH USE ONLY. NOT FOR USE IN DIAGNOSTIC PROCEDURES"

Our Abpromise to you: Quality guaranteed and expert technical support

- Replacement or refund for products not performing as stated on the datasheet
- Valid for 12 months from date of delivery
- Response to your inquiry within 24 hours
- We provide support in Chinese, English, French, German, Japanese and Spanish
- Extensive multi-media technical resources to help you
- We investigate all quality concerns to ensure our products perform to the highest standards

If the product does not perform as described on this datasheet, we will offer a refund or replacement. For full details of the Abpromise, please visit <https://www.abcam.co.jp/abpromise> or contact our technical team.

Terms and conditions

- Guarantee only valid for products bought direct from Abcam or one of our authorized distributors