

Anti-LRP1 antibody [8G1] ab20384

★★★★☆ [2 Abreviews](#) [13 References](#) [画像数 2](#)

製品の概要

| | |
|----------|---|
| 製品名 | Anti-LRP1 antibody [8G1] |
| 製品の詳細 | Mouse monoclonal [8G1] to LRP1 |
| 由来種 | Mouse |
| アプリケーション | 適用あり: ICC/IF, Electron Microscopy |
| 種交差性 | 交差種: Rat, Human |
| 免疫原 | Full length protein corresponding to LRP1. J Biol Chem 265:17401-4 (1990). |
| 特記事項 | <p>The Life Science industry has been in the grips of a reproducibility crisis for a number of years. Abcam is leading the way in addressing this with our range of recombinant monoclonal antibodies and knockout edited cell lines for gold-standard validation. Please check that this product meets your needs before purchasing.</p> <p>If you have any questions, special requirements or concerns, please send us an inquiry and/or contact our Support team ahead of purchase. Recommended alternatives for this product can be found below, along with publications, customer reviews and Q&As</p> |

製品の特性

| | |
|--------|---|
| 製品の状態 | Liquid |
| 保存方法 | Shipped at 4°C. Upon delivery aliquot and store at -20°C. Avoid freeze / thaw cycles. |
| バッファー | pH: 6.6 Constituents: 0.82% Sodium phosphate, 0.58% Sodium chloride |
| 精製度 | Protein A purified |
| ポリ/モノ | モノクローナル |
| クローン名 | 8G1 |
| アイソタイプ | IgG1 |
| 軽鎖の種類 | kappa |

アプリケーション

The Abpromise guarantee

Abpromise保証は、次のテスト済みアプリケーションにおけるab20384の使用に適用されます

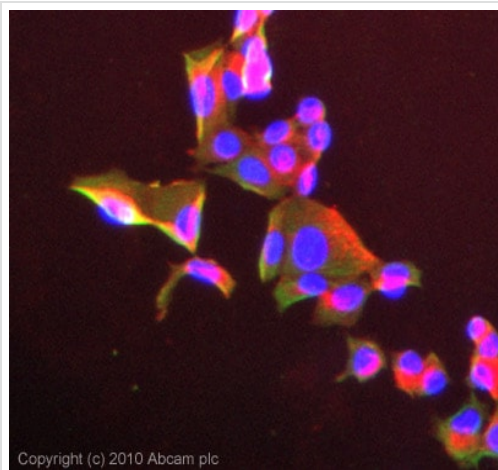
アプリケーションノートには、推奨の開始希釈率がありますが、適切な希釈率につきましてはご確認ください。

| アプリケーション | Abreviews | 特記事項 |
|---------------------|-----------|--|
| ICC/IF | ★☆☆☆☆ (1) | Use a concentration of 5 µg/ml. |
| Electron Microscopy | | Use at an assay dependent concentration. Use at dilutions of 1/400 or 1/600 for 20 mins. |

ターゲット情報

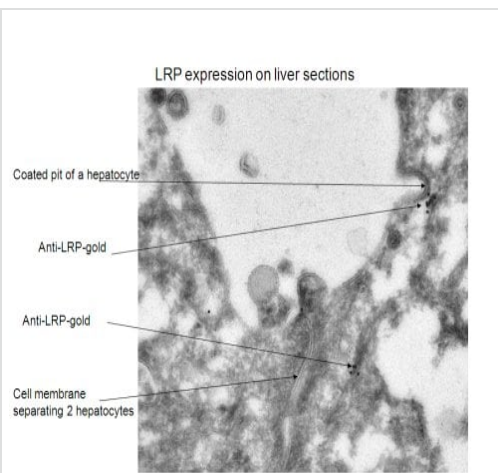
| | |
|-------|--|
| 機能 | Endocytic receptor involved in endocytosis and in phagocytosis of apoptotic cells. Required for early embryonic development. Involved in cellular lipid homeostasis. Involved in the plasma clearance of chylomicron remnants and activated LRPAP1 (alpha 2-macroglobulin), as well as the local metabolism of complexes between plasminogen activators and their endogenous inhibitors. May modulate cellular events, such as APP metabolism, kinase-dependent intracellular signaling, neuronal calcium signaling as well as neurotransmission. Functions as a receptor for Pseudomonas aeruginosa exotoxin A. |
| 組織特異性 | Most abundant in liver, brain and lung. |
| 配列類似性 | Belongs to the LDLR family. Contains 22 EGF-like domains. Contains 31 LDL-receptor class A domains. Contains 34 LDL-receptor class B repeats. |
| 翻訳後修飾 | Cleaved into a 85 kDa membrane-spanning subunit (LRP-85) and a 515 kDa large extracellular domain (LRP-515) that remains non-covalently associated. Gamma-secretase-dependent cleavage of LRP-85 releases the intracellular domain from the membrane. The N-terminus is blocked. Phosphorylated on serine and threonine residues. Phosphorylated on tyrosine residues upon stimulation with PDGF. Tyrosine phosphorylation promotes interaction with SHC1. |
| 細胞内局在 | Cytoplasm. Nucleus. After cleavage, the intracellular domain (LRPICD) is detected both in the cytoplasm and in the nucleus and Cell membrane. Membrane, coated pit. |

画像



Immunocytochemistry/ Immunofluorescence - Anti-LRP1 antibody [8G1] (ab20384)

ICC/IF image of ab20384 stained Mcf7 cells. The cells were 100% methanol fixed (5 min) and then incubated in 1%BSA / 10% normal goat serum / 0.3M glycine in 0.1% PBS-Tween for 1h to permeabilise the cells and block non-specific protein-protein interactions. The cells were then incubated with the antibody (ab20384, 5µg/ml) overnight at +4°C. The secondary antibody (green) was Alexa Fluor® 488 goat anti-mouse IgG (H+L) used at a 1/1000 dilution for 1h. Alexa Fluor® 594 WGA was used to label plasma membranes (red) at a 1/200 dilution for 1h. DAPI was used to stain the cell nuclei (blue) at a concentration of 1.43µM.



Electron Microscopy - Anti-LRP1 antibody [8G1] (ab20384)

Ab20384 staining primary rat hepatocytes cells by EM. The cells were fixed and prepared by Tokuyasu method. The cryosections of 70nm were placed on 100 mesh grids. All the following steps were done at room temperature. Blocking was carried out for 30 min with 1% fish skin gelatine (FSG). The tissue sections were placed on a drop of 5 ul of first Ab (anti-LRP 8G1) for 20 min at dilutions of 1:400 or 1:600 seemed to work the best. After incubation with the primary antibody, 3. 5 x 2 min wash was done with PBS and the sections were placed on a drop of 5 ul of secondary Ab (goat anti-mouse) for 20 min (dilution 1:150 5. 5 x 2 min wash with PBS). Samples were placed on a drop of 5 ul of PAG10 for 15 min (dilution 1:60 or 1:70) and then 5 x 2 min wash with PBS. 2 min on 1% glutaraldehyde for fixation and 4 x 2.5 min on H₂O. afterthat 1 second + 1 second + 6 min on drops of Methyl Cellulose/Uranyl Acetate (9:1) on ice. The surplus of MC/UA was removed , the slides were dried and obser

Please note: All products are "FOR RESEARCH USE ONLY. NOT FOR USE IN DIAGNOSTIC PROCEDURES"

Our Abpromise to you: Quality guaranteed and expert technical support

- Replacement or refund for products not performing as stated on the datasheet
- Valid for 12 months from date of delivery
- Response to your inquiry within 24 hours
- We provide support in Chinese, English, French, German, Japanese and Spanish
- Extensive multi-media technical resources to help you
- We investigate all quality concerns to ensure our products perform to the highest standards

If the product does not perform as described on this datasheet, we will offer a refund or replacement. For full details of the Abpromise,

please visit <https://www.abcam.co.jp/abpromise> or contact our technical team.

Terms and conditions

- Guarantee only valid for products bought direct from Abcam or one of our authorized distributors