


Anti-LOXL2 antibody ab96233

★★★★☆ **8 Abreviews** **29 References** **画像数 7**

製品の概要

製品名	Anti-LOXL2 antibody
製品の詳細	Rabbit polyclonal to LOXL2
由来種	Rabbit
アプリケーション	適用あり: ICC/IF, WB, IHC-P
種交差性	交差種: Mouse, Human 交差が予測される動物種: Rat, Cow 
免疫原	Recombinant fragment corresponding to Human LOXL2. Recombinant fragment, corresponding to a region within amino acids 454-712 of Human LOXL2. Database link: Q9Y4K0
ポジティブ・コントロール	IHC-P: Mouse ovary tissue and human esophageal cancer tissue. WB: Human samples only: MDA-MB-231 cell line, 293T, A431 and H1299 whole cell lysates, HeLa cell lysate. ICC/IF: A431 cells.
特記事項	<p>The Life Science industry has been in the grips of a reproducibility crisis for a number of years. Abcam is leading the way in addressing this with our range of recombinant monoclonal antibodies and knockout edited cell lines for gold-standard validation. Please check that this product meets your needs before purchasing.</p> <p>If you have any questions, special requirements or concerns, please send us an inquiry and/or contact our Support team ahead of purchase. Recommended alternatives for this product can be found below, along with publications, customer reviews and Q&As</p>

製品の特性

製品の状態	Liquid
保存方法	Shipped at 4°C. Upon delivery aliquot. Store at -20°C or -80°C. Avoid freeze / thaw cycle.
バッファー	pH: 7.00 Preservative: 0.025% Proclin 300 Constituents: 78% PBS, 1% BSA, 20% Glycerol (glycerin, glycerine)
精製度	Immunogen affinity purified
ポリ/モノ	ポリクローナル
アイソタイプ	IgG

アプリケーション

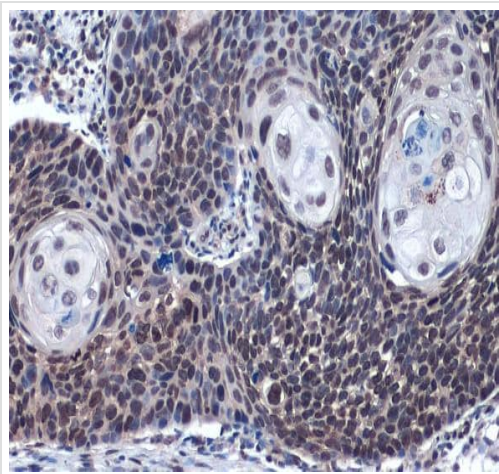
The Abpromise guarantee Abpromise保証は、次のテスト済みアプリケーションにおけるab96233の使用に適用されます
アプリケーションノートには、推奨の開始希釈率がありますが、適切な希釈率につきましてはご検討ください。

アプリケーション	Abreviews	特記事項
ICC/IF	★★★★★ (2)	1/100 - 1/1000.
WB	★★★★★ (3)	1/500 - 1/10000. Predicted molecular weight: 87 kDa. Blocking: 5% non-fat milk in TBST at room temperature 60 minutes. Please ensure to include a positive control in your experiment, examples are included on this datasheet. WB application is validated in human samples only. ab179810 can be used as an alternative product for WB using mouse samples
IHC-P	★★★★★ (2)	1/500. Perform heat mediated antigen retrieval with citrate buffer pH 6 before commencing with IHC staining protocol.

ターゲット情報

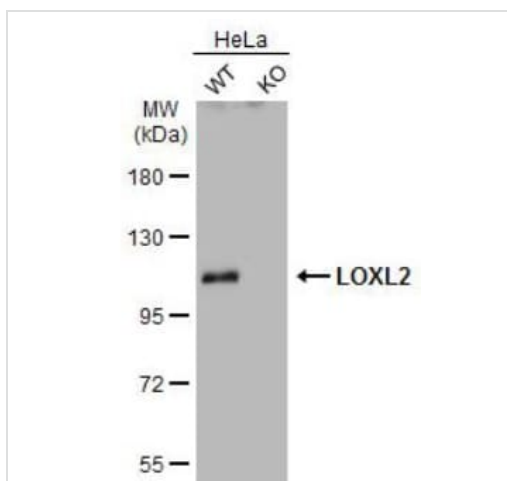
組織特異性	Expressed in many tissues. Highest expression in reproductive tissues, placenta, uterus and prostate.
配列類似性	Belongs to the lysyl oxidase family. Contains 4 SRCR domains.
翻訳後修飾	The lysine tyrosylquinone cross-link (LTQ) is generated by condensation of the epsilon-amino group of a lysine with a topaquinone produced by oxidation of tyrosine.
細胞内局在	Secreted > extracellular space.

画像



Immunohistochemistry (Formalin/PFA-fixed paraffin-embedded sections) - Anti-LOXL2 antibody (ab96233)

Immunohistochemical analysis of Paraffin-embedded human esophageal carcinoma tissue labeling LOXL2 with ab96233 at 1/3000 dilution. Antigen Retrieval: Citrate buffer, pH 6.0, 15 min (Cuisinart Electric Pressure Cooker #EPC-1200, choose "high pressure"). Endogenous peroxidase blocking: 3% H₂O₂, RT, 30min. Blocking: 1.5% goat serum (dilute goat serum by 1xPBS), RT, 30 min. Primary antibody incubation: 4°C overnight. Secondary antibody incubation: ABC HRP Kit (Rabbit IgG), 1:200, RT, 30min. Washing condition: PBS, 2 x 5 mins. Chromogen system: DAB.



Western blot - Anti-LOXL2 antibody (ab96233)

All lanes : Anti-LOXL2 antibody (ab96233) at 1/500 dilution (4? overnight)

Lane 1 : WT HeLa cell lysate at 30 µg

Lane 2 : LOXL2 knockout (KO) HeLa cell lysate

Secondary

All lanes : HRP-conjugated anti-rabbit IgG antibody at 1/10000 dilution

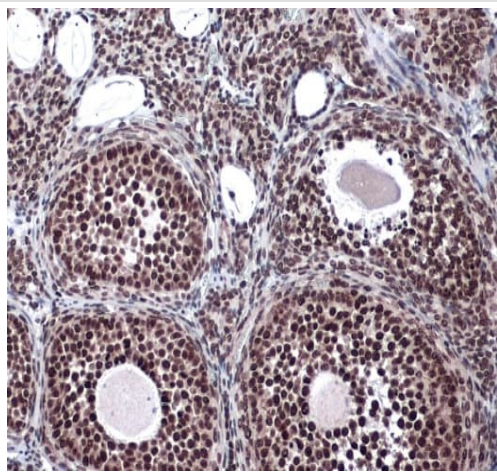
Developed using the ECL technique.

Predicted band size: 87 kDa

7.5% SDS-PAGE.

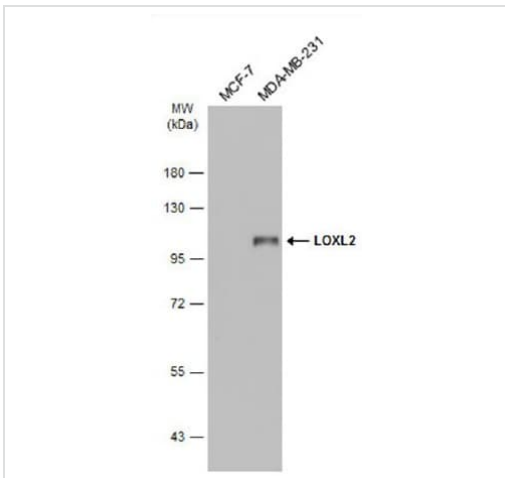
alpha Tubulin was used as a loading control and showed equal loading.

Running: 80V, 15min; 140V, 40 min. Transfer: Semi-dry, 18 V, 60 min (NC embrane). Blocking: 5% non-fat milk in TBST, RT, 60 minutes. Washing: 5 ml TBST, 4 x 5 min. ECL exposure.



Immunohistochemistry (Formalin/PFA-fixed paraffin-embedded sections) - Anti-LOXL2 antibody (ab96233)

Immunohistochemical analysis of paraffin-embedded mouse ovary tissue labeling LOXL2 with ab96233 at 1/500 dilution. Antigen Retrieval: Citrate buffer, pH 6.0, 15 min (Cuisinart Electric Pressure Cooker #EPC-1200, choose "high pressure"). Endogenous peroxidase blocking: 3% H₂O₂, RT, 30min. Blocking: 1.5% goat serum (dilute goat serum by 1xPBS), RT, 30 min. Primary antibody incubation: 4°C overnight. Secondary antibody incubation: ABC HRP Kit (Rabbit IgG), 1:200, RT, 30min. Washing condition: PBS, 2 x 5 mins. Chromogen system: DAB.



Western blot - Anti-LOXL2 antibody (ab96233)

All lanes : Anti-LOXL2 antibody (ab96233) at 1/1000 dilution

Lane 1 : MCF7 cell line

Lane 2 : MDA-MB-231 cell line

Lysates/proteins at 30 µg per lane.

Secondary

All lanes : Rabbit IgG antibody (HRP) at 1/10000 dilution

Developed using the ECL technique.

Predicted band size: 87 kDa

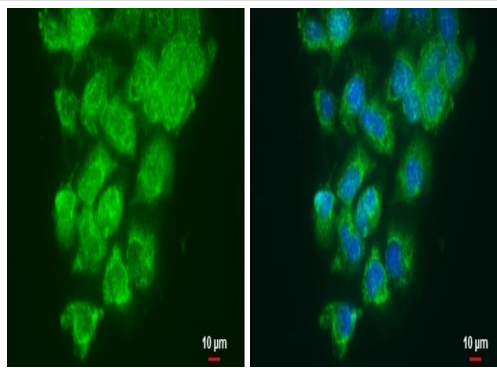
Observed band size: 105 kDa

MCF-7 lack LOXL2 expression (PMID: 19330836, PMID:12154058 and PMID: 27655685).

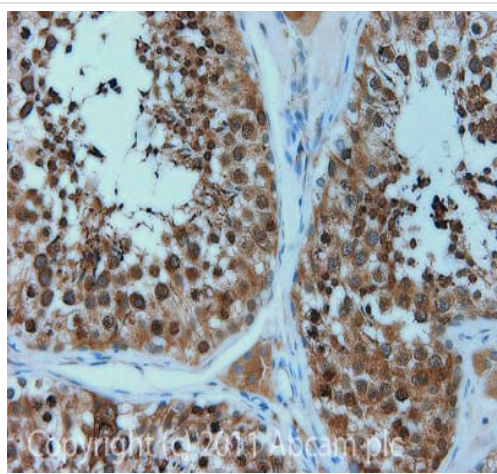
7.5% gel. Running: 80V, 15min; 140V, 40 min. Transfer: Semi-dry, 18 V, 60 min (Nitrocellulose membrane). Blocking: 5% non-fat milk in TBST, RT, 60 min. Primary antibody incubation: 4°C overnight. Washing: 5 ml TBST, 4 x 5 min. Exposure: Western blot HRP

substrate.

Immunocytochemistry/ Immunofluorescence analysis of A431 cells labeling LOXL2 with ab96233 at 1:500 (green). Cells were fixed in ice cold methanol for 5 minutes. Cells were co-stained with Hoechst 33342 (blue).



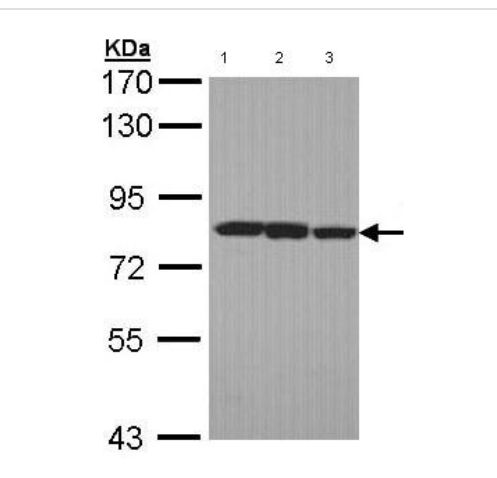
Immunocytochemistry/ Immunofluorescence - Anti-LOXL2 antibody (ab96233)



Immunohistochemistry (Formalin/PFA-fixed paraffin-embedded sections) - Anti-LOXL2 antibody (ab96233)

IHC image of ab96233 staining in human testis formalin fixed paraffin embedded tissue section, performed on a Leica Bond™ system using the standard protocol F. The section was pre-treated using heat mediated antigen retrieval with sodium citrate buffer (pH6, epitope retrieval solution 1) for 20 mins. The section was then incubated with ab96233, 1 µg/ml, for 15 mins at room temperature and detected using an HRP conjugated compact polymer system. DAB was used as the chromogen. The section was then counterstained with haematoxylin and mounted with DPX.

For other IHC staining systems (automated and non-automated) customers should optimize variable parameters such as antigen retrieval conditions, primary antibody concentration and antibody incubation times.



Western blot - Anti-LOXL2 antibody (ab96233)

All lanes : Anti-LOXL2 antibody (ab96233) at 1/1000 dilution

Lane 1 : 293T cell lysate

Lane 2 : A431 cell lysate

Lane 3 : H1299 cell lysate

Lysates/proteins at 30 µg per lane.

Predicted band size: 87 kDa

7.5% SDS-PAGE

Please note: All products are "FOR RESEARCH USE ONLY. NOT FOR USE IN DIAGNOSTIC PROCEDURES"

Our Abpromise to you: Quality guaranteed and expert technical support

- Replacement or refund for products not performing as stated on the datasheet
- Valid for 12 months from date of delivery
- Response to your inquiry within 24 hours

- We provide support in Chinese, English, French, German, Japanese and Spanish
- Extensive multi-media technical resources to help you
- We investigate all quality concerns to ensure our products perform to the highest standards

If the product does not perform as described on this datasheet, we will offer a refund or replacement. For full details of the Abpromise, please visit <https://www.abcam.co.jp/abpromise> or contact our technical team.

Terms and conditions

- Guarantee only valid for products bought direct from Abcam or one of our authorized distributors