

# Anti-Livin antibody [OT11B10] ab236500

[2 References](#) [画像数 5](#)

### 製品の概要

製品名	Anti-Livin antibody [OT11B10]
製品の詳細	Mouse monoclonal [OT11B10] to Livin
由来種	Mouse
アプリケーション	<b>適用あり:</b> WB, ICC/IF, Flow Cyt (Intra)
種交差性	<b>交差種:</b> Human, Recombinant fragment
免疫原	Recombinant full length protein corresponding to Human Livin aa 1 to the C-terminus. Produced in HEK293T cells (NP_071444). Database link: <a href="#">Q96CA5-2</a> <a href="#">Run BLAST with</a> <a href="#">Run BLAST with</a>
ポジティブ・コントロール	WB: pCMV6-ENTRY Livin cDNA transfected HEK-293T cell lysate. Flow Cyt (Intra): Jurkat and HeLa cells. ICC/IF: COS-7 cells transiently transfected by pCMV6-ENTRY Livin; HeLa cells.
特記事項	Clone OT11B10 (formerly 1B10).  The Life Science industry has been in the grips of a reproducibility crisis for a number of years. Abcam is leading the way in addressing this with our range of recombinant monoclonal antibodies and knockout edited cell lines for gold-standard validation. Please check that this product meets your needs before purchasing.  If you have any questions, special requirements or concerns, please send us an inquiry and/or contact our Support team ahead of purchase. Recommended alternatives for this product can be found below, along with publications, customer reviews and Q&As

### 製品の特性

製品の状態	Liquid
保存方法	Shipped at 4°C. Store at +4°C short term (1-2 weeks). Upon delivery aliquot. Store at -20°C long term. Avoid freeze / thaw cycle.
バッファー	pH: 7.30 Preservative: 0.02% Sodium azide Constituents: PBS, 1% BSA, 50% Glycerol
精製度	Affinity purified
特記事項 (精製)	Purified from cell culture supernatant.
ポリ/モノ	モノクローナル

クローン名 OT11B10  
アイソタイプ IgG1

#### アプリケーション

**The Abpromise guarantee** Abpromise保証は、次のテスト済みアプリケーションにおけるab236500の使用に適用されます  
アプリケーションノートには、推奨の開始希釈率がありますが、適切な希釈率につきましてはご検討ください。

アプリケーション	Abreviews	特記事項
WB		1/2000. Predicted molecular weight: 33 kDa.
ICC/IF		1/100.
Flow Cyt (Intra)		1/100.

#### ターゲット情報

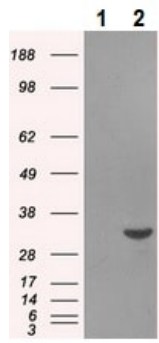
**機能** Protects against apoptosis induced by TNF or by chemical agents such as adriamycin, etoposide or staurosporine. Suppression of apoptosis is mediated by activation of MAPK8/JNK1, and possibly also of MAPK9/JNK2. This activation depends on TAB1 and NR2C2/TAK1. In vitro, inhibits caspase-3 and proteolytic activation of pro-caspase-9. Isoform 1 blocks staurosporine-induced apoptosis. Isoform 2 blocks etoposide-induced apoptosis.

**組織特異性** Isoform 1 and isoform 2 are expressed at very low levels or not detectable in most adult tissues. Detected in adult heart, placenta, lung, lymph node, spleen and ovary, and in several carcinoma cell lines. Isoform 2 is detected in fetal kidney, heart and spleen, and at lower levels in adult brain, skeletal muscle and peripheral blood leukocytes.

**配列類似性** Belongs to the IAP family.  
Contains 1 BIR repeat.  
Contains 1 RING-type zinc finger.

**細胞内局在** Nucleus. Cytoplasm. Nuclear, and in a filamentous pattern throughout the cytoplasm.

#### 画像



Western blot - Anti-Livin antibody [OT1B10] (ab236500)

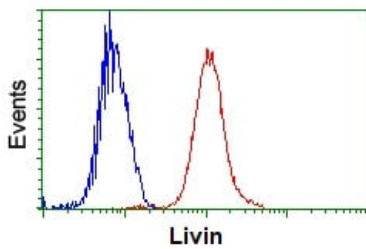
**All lanes** : Anti-Livin antibody [OT1B10] (ab236500) at 1/2000 dilution

**Lane 1** : pCMV6-ENTRY control cDNA transfected HEK-293T (human epithelial cell line from embryonic kidney transformed with large T antigen) cell lysate

**Lane 2** : pCMV6-ENTRY Livin cDNA transfected HEK-293T cell lysate

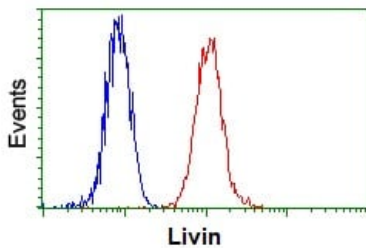
Lysates/proteins at 5 µg per lane.

**Predicted band size:** 33 kDa



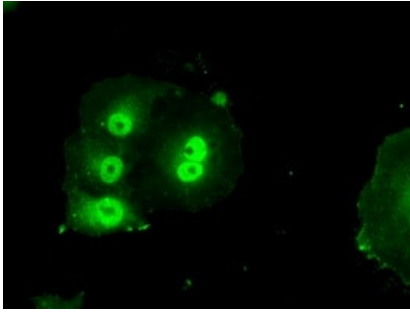
Flow Cytometry (Intracellular) - Anti-Livin antibody [OT1B10] (ab236500)

Flow cytometric analysis of Jurkat (human T cell leukemia cell line from peripheral blood) cell line labeling Livin with ab236500 at 1/100 dilution (red) compared to a nonspecific negative control antibody (blue).



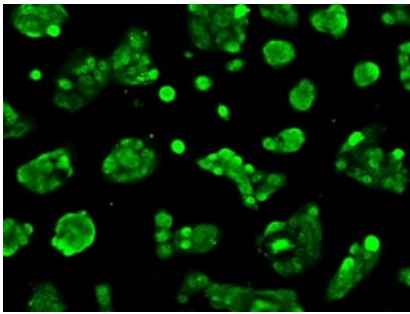
Flow Cytometry (Intracellular) - Anti-Livin antibody [OT1B10] (ab236500)

Flow cytometric analysis of HeLa (human epithelial cell line from cervix adenocarcinoma) cell line labeling Livin with ab236500 at 1/100 dilution (red) compared to a nonspecific negative control antibody (blue).



COS-7 (African green monkey kidney fibroblast-like cell line) cells transiently transfected with pCMV6-ENTRY Livin stained for Livin (green) using ab236500 at 1/100 dilution in ICC/IF.

Immunocytochemistry/ Immunofluorescence - Anti-Livin antibody [OT1B10] (ab236500)



HeLa (human epithelial cell line from cervix adenocarcinoma) cells stained for Livin (green) using ab236500 at 1/100 dilution in ICC/IF.

Immunocytochemistry/ Immunofluorescence - Anti-Livin antibody [OT1B10] (ab236500)

**Please note:** All products are "FOR RESEARCH USE ONLY. NOT FOR USE IN DIAGNOSTIC PROCEDURES"

### Our Abpromise to you: Quality guaranteed and expert technical support

---

- Replacement or refund for products not performing as stated on the datasheet
- Valid for 12 months from date of delivery
- Response to your inquiry within 24 hours
- We provide support in Chinese, English, French, German, Japanese and Spanish
- Extensive multi-media technical resources to help you
- We investigate all quality concerns to ensure our products perform to the highest standards

If the product does not perform as described on this datasheet, we will offer a refund or replacement. For full details of the Abpromise, please visit <https://www.abcam.co.jp/abpromise> or contact our technical team.

### Terms and conditions

---

- Guarantee only valid for products bought direct from Abcam or one of our authorized distributors