


Anti-Lipoamide Dehydrogenase antibody [EPR6635] ab133551

KO 評価済 リコンビナント RabMAb

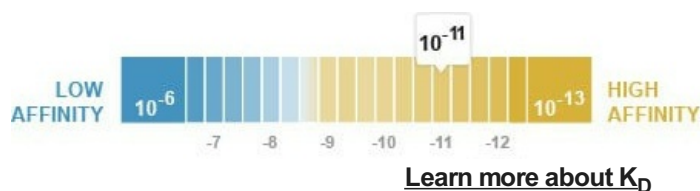
★★★★★ [1 Abreviews](#) [12 References](#) [画像数 6](#)

製品の概要

製品名	Anti-Lipoamide Dehydrogenase antibody [EPR6635]
製品の詳細	Rabbit monoclonal [EPR6635] to Lipoamide Dehydrogenase
由来種	Rabbit
アプリケーション	適用あり: WB, IHC-P 適用なし: Flow Cyt or IP
種交差性	交差種: Human 交差が予測される動物種: Mouse, Rat 
免疫原	Synthetic peptide. This information is proprietary to Abcam and/or its suppliers.
ポジティブ・コントロール	WB: Jurkat, HeLa, 293T, MCF7, and Caco-2 cell lysates. IHC-P: Human kidney and Human colon tissues
特記事項	This product is a recombinant monoclonal antibody, which offers several advantages including: <ul style="list-style-type: none"> - High batch-to-batch consistency and reproducibility - Improved sensitivity and specificity - Long-term security of supply - Animal-free production For more information see here . Our RabMAb [®] technology is a patented hybridoma-based technology for making rabbit monoclonal antibodies. For details on our patents, please refer to RabMAb[®] patents .

製品の特性

製品の状態	Liquid
保存方法	Shipped at 4°C. Store at -20°C. Stable for 12 months at -20°C.
解離定数 (K _D 値)	K _D = 1.52 x 10 ⁻¹¹ M



バッファー	pH: 7.2 Preservative: 0.05% Sodium azide Constituents: 40% Glycerol (glycerin, glycerine), 9.85% Tris glycine, 50% Tissue culture supernatant
精製度	Protein A purified
ポリ/モノ	モノクローナル
クローン名	EPR6635
アイソタイプ	IgG

アプリケーション

The Abpromise guarantee **Abpromise保証は、次のテスト済みアプリケーションにおけるab133551の使用に適用されず**
アプリケーションノートには、推奨の開始希釈率がありますが、適切な希釈率につきましてはご検討ください。

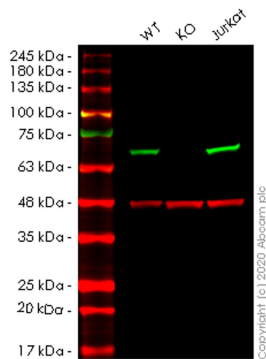
アプリケーション	Abreviews	特記事項
WB	★★★★★ (1)	1/10000 - 1/50000. Detects a band of approximately 56 kDa (predicted molecular weight: 54 kDa).
IHC-P		1/100 - 1/250. Perform heat mediated antigen retrieval with citrate buffer pH 6 before commencing with IHC staining protocol.

追加情報 Is unsuitable for Flow Cyt or IP.

ターゲット情報

機能	Lipoamide dehydrogenase is a component of the glycine cleavage system as well as of the alpha-ketoacid dehydrogenase complexes. Involved in the hyperactivation of spermatazoa during capacitation and in the spermatazoal acrosome reaction.
関連疾患	Note=Defects in DLD are involved in the development of congenital infantile lactic acidosis. Defects in DLD are a cause of maple syrup urine disease (MSUD) [MIM:248600]. MSUD is characterized by mental and physical retardation, feeding problems and a maple syrup odor to the urine. The keto acids of the branched-chain amino acids are present in the urine, resulting from a block in oxidative decarboxylation.
配列類似性	Belongs to the class-I pyridine nucleotide-disulfide oxidoreductase family.
翻訳後修飾	Tyrosine phosphorylated.
細胞内局在	Mitochondrion matrix.

画像



Western blot - Anti-Lipoamide Dehydrogenase antibody [EPR6635] (ab133551)

All lanes : Anti-Lipoamide Dehydrogenase antibody [EPR6635] (ab133551) at 1/1000 dilution

Lane 1 : Wild-type HeLa cell lysate

Lane 2 : DLD knockout HeLa cell lysate

Lane 3 : Jurkat cell lysate

Lysates/proteins at 20 µg per lane.

Secondary

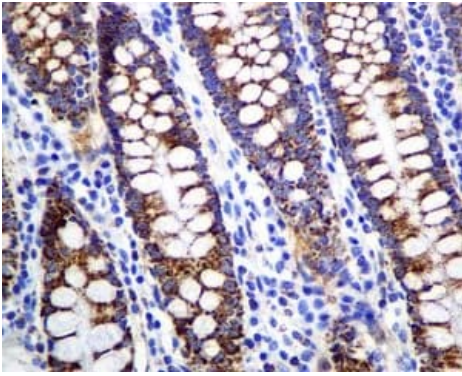
All lanes : Goat anti-Rabbit IgG H&L (IRDye® 800CW) preadsorbed ([ab216773](#)) at 1/10000 dilution

Predicted band size: 54 kDa

Observed band size: 56 kDa

Lanes 1-3: Merged signal (red and green). Green - ab133551 observed at 56 kDa. Red - loading control [ab8245](#) observed at 36 kDa.

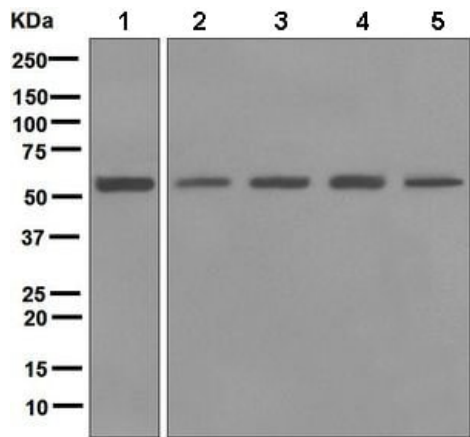
ab133551 Anti-Lipoamide Dehydrogenase antibody [EPR6635] was shown to specifically react with Lipoamide Dehydrogenase in wild-type HeLa cells. Loss of signal was observed when knockout cell line [ab265535](#) (knockout cell lysate [ab257922](#)) was used. Wild-type and Lipoamide Dehydrogenase knockout samples were subjected to SDS-PAGE. ab133551 and Anti-GAPDH antibody [6C5] - Loading Control ([ab8245](#)) were incubated overnight at 4°C at 1 in 1000 dilution and 1 in 20000 dilution respectively. Blots were developed with Goat anti-Rabbit IgG H&L (IRDye® 800CW) preadsorbed ([ab216773](#)) and Goat anti-Mouse IgG H&L (IRDye® 680RD) preadsorbed ([ab216776](#)) secondary antibodies at 1 in 20000 dilution for 1 hour at room temperature before imaging.



Immunohistochemistry (Formalin/PFA-fixed paraffin-embedded sections) - Anti-Lipoamide Dehydrogenase antibody [EPR6635] (ab133551)

Immunohistochemical analysis of paraffin embedded Human colon tissue labelling Lipoamide Dehydrogenase with ab133551 antibody at a dilution of 1/100.

Perform heat mediated antigen retrieval with citrate buffer pH 6 before commencing with IHC staining protocol.



Western blot - Anti-Lipoamide Dehydrogenase antibody [EPR6635] (ab133551)

All lanes : Anti-Lipoamide Dehydrogenase antibody [EPR6635] (ab133551) at 1/10000 dilution

Lane 1 : Jurkat cell lysate

Lane 2 : HeLa cell lysate

Lane 3 : 293T cell lysate

Lane 4 : MCF7 cell lysate

Lane 5 : Caco-2 cell lysate

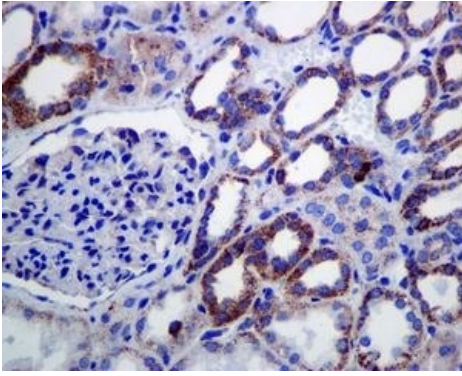
Lysates/proteins at 10 µg per lane.

Secondary

All lanes : HRP labelled goat anti-rabbit at 1/2000 dilution

Predicted band size: 54 kDa

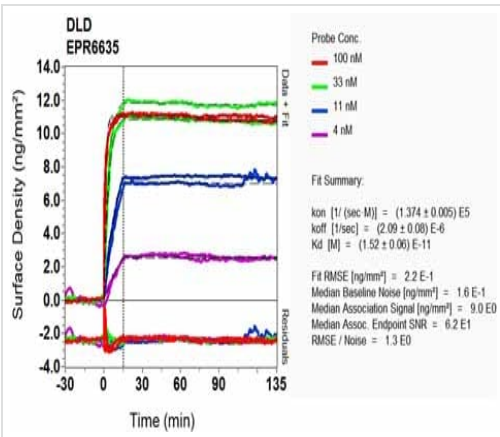
Observed band size: 56 kDa



Immunohistochemistry (Formalin/PFA-fixed paraffin-embedded sections) - Anti-Lipoamide Dehydrogenase antibody [EPR6635] (ab133551)

Immunohistochemical analysis of paraffin embedded Human kidney tissue labelling Lipoamide Dehydrogenase with ab133551 antibody at a dilution of 1/100.

Perform heat mediated antigen retrieval with citrate buffer pH 6 before commencing with IHC staining protocol.



DLI-D Scanning - Anti-Lipoamide Dehydrogenase antibody [EPR6635] (ab133551)

Equilibrium dissociation constant (K_D)

Learn more about K_D

[Click here to learn more about \$K_D\$](#)

Why choose a recombinant antibody?

- Research with confidence**
Consistent and reproducible results
- Long-term and scalable supply**
Recombinant technology
- Success from the first experiment**
Confirmed specificity
- Ethical standards compliant**
Animal-free production

Anti-Lipoamide Dehydrogenase antibody [EPR6635] (ab133551)

Please note: All products are "FOR RESEARCH USE ONLY. NOT FOR USE IN DIAGNOSTIC PROCEDURES"

Our Abpromise to you: Quality guaranteed and expert technical support

- Replacement or refund for products not performing as stated on the datasheet
- Valid for 12 months from date of delivery
- Response to your inquiry within 24 hours

- We provide support in Chinese, English, French, German, Japanese and Spanish
- Extensive multi-media technical resources to help you
- We investigate all quality concerns to ensure our products perform to the highest standards

If the product does not perform as described on this datasheet, we will offer a refund or replacement. For full details of the Abpromise, please visit <https://www.abcam.co.jp/abpromise> or contact our technical team.

Terms and conditions

- Guarantee only valid for products bought direct from Abcam or one of our authorized distributors