

### Anti-LIPF antibody [EPR5711(B)] ab124831

リコンビナント **RabMAb**

画像数 3

#### 製品の概要

製品名	Anti-LIPF antibody [EPR5711(B)]
製品の詳細	Rabbit monoclonal [EPR5711(B)] to LIPF
由来種	Rabbit
アプリケーション	<b>適用あり:</b> WB, IHC-P
種交差性	<b>交差種:</b> Mouse, Human
免疫原	Synthetic peptide within Human LIPF aa 350-450 (C terminal). The exact sequence is proprietary.
ポジティブ・コントロール	Human stomach and Mouse small intestine lysates; Human liver tissue.
特記事項	<p>This product is a recombinant monoclonal antibody, which offers several advantages including:</p> <ul style="list-style-type: none"> <li>- High batch-to-batch consistency and reproducibility</li> <li>- Improved sensitivity and specificity</li> <li>- Long-term security of supply</li> <li>- Animal-free production</li> </ul> <p>For more information <a href="#">see here</a>.</p> <p>Our RabMAb<sup>®</sup> technology is a patented hybridoma-based technology for making rabbit monoclonal antibodies. For details on our patents, please refer to <a href="#">RabMAb<sup>®</sup> patents</a>.</p> <p>Rat: We have preliminary internal testing data to indicate this antibody may not react with this species. Please contact us for more information.</p>

#### 製品の特性

製品の状態	Liquid
保存方法	Shipped at 4°C. Upon delivery aliquot and store at -20°C. Avoid repeated freeze / thaw cycles.
バッファー	<p>pH: 7.20</p> <p>Preservative: 0.05% Sodium azide</p> <p>Constituents: 40% Glycerol (glycerin, glycerine), 9.85% Tris glycine, 50% Tissue culture supernatant</p>
精製度	Protein A purified
ポリ/モノ	モノクローナル
クローン名	EPR5711(B)

アイソタイプIgG

アプリケーション

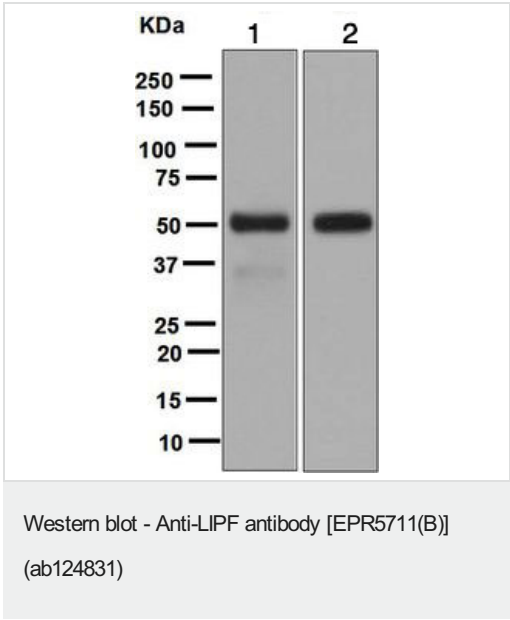
The Abpromise guarantee      **Abpromise保証は、** 次のテスト済みアプリケーションにおけるab124831の使用に適用されます  
アプリケーションノートには、推奨の開始希釈率がありますが、適切な希釈率につきましてはご検討ください。

アプリケーション	Abreviews	特記事項
WB		1/1000 - 1/10000. Detects a band of approximately 49 kDa (predicted molecular weight: 45 kDa).
IHC-P		1/250 - 1/500. Perform heat mediated antigen retrieval before commencing with IHC staining protocol. (heat up to 98 degrees C, below boiling, and then let cool for 10-20 min).

ターゲット情報

配列類似性      Belongs to the AB hydrolase superfamily. Lipase family.  
細胞内局在      Secreted.

画像



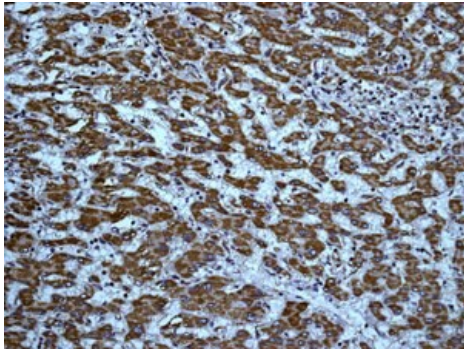
**All lanes :** Anti-LIPF antibody [EPR5711(B)] (ab124831) at 1/1000 dilution

**Lane 1 :** Human stomach lysate  
**Lane 2 :** Mouse small intestine lysate

Lysates/proteins at 10 µg per lane.

**Secondary**  
**All lanes :** HRP labelled goat anti-rabbit at 1/2000 dilution

**Predicted band size:** 45 kDa



Immunohistochemistry (Formalin/PFA-fixed paraffin-embedded sections) - Anti-LIPF antibody [EPR5711(B)] (ab124831)

ab124831, at 1/250 dilution, staining LIPF in paraffin-embedded Human liver tissue by Immunohistochemistry.

Perform heat mediated antigen retrieval before commencing with IHC staining protocol.

#### Why choose a recombinant antibody?



Anti-LIPF antibody [EPR5711(B)] (ab124831)

**Please note:** All products are "FOR RESEARCH USE ONLY. NOT FOR USE IN DIAGNOSTIC PROCEDURES"

#### Our Abpromise to you: Quality guaranteed and expert technical support

- Replacement or refund for products not performing as stated on the datasheet
- Valid for 12 months from date of delivery
- Response to your inquiry within 24 hours
- We provide support in Chinese, English, French, German, Japanese and Spanish
- Extensive multi-media technical resources to help you
- We investigate all quality concerns to ensure our products perform to the highest standards

If the product does not perform as described on this datasheet, we will offer a refund or replacement. For full details of the Abpromise, please visit <https://www.abcam.co.jp/abpromise> or contact our technical team.

#### **Terms and conditions**

---

- Guarantee only valid for products bought direct from Abcam or one of our authorized distributors