


Anti-LINE-1 ORF2p antibody ab106004

★★★★★ [1 Abreviews](#) [4 References](#) [画像数 1](#)

製品の概要

製品名	Anti-LINE-1 ORF2p antibody
製品の詳細	Chicken polyclonal to LINE-1 ORF2p
由来種	Chicken
特異性	The two synthetic immunogen peptides correspond to regions within the endonuclease domain of LINE-1 ORF2p protein. This antibody is intended for use in studying control of L1 retrotransposons.
アプリケーション	適用あり: ELISA, WB
種交差性	交差種: Human 交差が予測される動物種: Chimpanzee 
免疫原	Synthetic peptide corresponding to Human LINE-1 ORF2p conjugated to keyhole limpet haemocyanin. Two synthetic peptides conjugated to keyhole limpet hemocyanin (KLH). The peptides correspond to regions within the endonuclease domain of LINE-1 ORF2p protein. Database link: O00370
ポジティブ・コントロール	induced bacterially expressed human ORF2
特記事項	Dilute only prior to immediate use. Expiration date is one (1) year from date of opening product. ab106004 is intended for use in studying control of L1 retrotransposons. The Life Science industry has been in the grips of a reproducibility crisis for a number of years. Abcam is leading the way in addressing this with our range of recombinant monoclonal antibodies and knockout edited cell lines for gold-standard validation. Please check that this product meets your needs before purchasing. If you have any questions, special requirements or concerns, please send us an inquiry and/or contact our Support team ahead of purchase. Recommended alternatives for this product can be found below, along with publications, customer reviews and Q&As

製品の特性

製品の状態	Liquid
保存方法	Shipped at 4°C. Upon delivery aliquot and store at -20°C or -80°C. Avoid repeated freeze / thaw cycles.
バッファー	Preservative: 0.01% Sodium azide

Constituents: 0.88% Sodium chloride, 0.42% Potassium phosphate

精製度

IgY fraction

特記事項(精製)

ab106004 is an IgY fraction antibody purified from monospecific Chicken egg yolks by a multi-step process which includes selective precipitation and salt fractionation, followed by extensive dialysis against the buffer.

ポリ/モノ

ポリクローナル

アイソタイプ

IgY

アプリケーション

The Abpromise guarantee

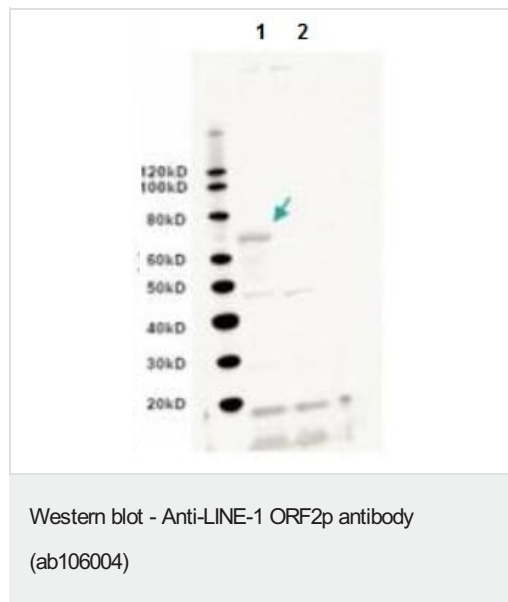
Abpromise保証は、次のテスト済みアプリケーションにおけるab106004の使用に適用されます

アプリケーションノートには、推奨の開始希釈率がありますが、適切な希釈率につきましてはご検討ください。

アプリケーション	Abreviews	特記事項
ELISA		Use at an assay dependent concentration.
WB		1/2000 - 1/10000. Predicted molecular weight: 149 kDa.

ターゲット情報

画像



All lanes : Anti-LINE-1 ORF2p antibody (ab106004) at 1/2000 dilution

Lane 1 : induced bacterially expressed human ORF2

Lane 2 : uninduced bacterially expressed human ORF2

Predicted band size: 149 kDa

Note: No specific band staining is seen in the uninduced lane (lane 2). The lower molecular weight bands represent non-specific staining. The band at ~70 kDa (arrowhead) corresponds to a Human LINE-1 ORF2p endonuclease domain fusion protein.

Please note: All products are "FOR RESEARCH USE ONLY. NOT FOR USE IN DIAGNOSTIC PROCEDURES"

Our Abpromise to you: Quality guaranteed and expert technical support

- Replacement or refund for products not performing as stated on the datasheet
- Valid for 12 months from date of delivery
- Response to your inquiry within 24 hours
- We provide support in Chinese, English, French, German, Japanese and Spanish
- Extensive multi-media technical resources to help you
- We investigate all quality concerns to ensure our products perform to the highest standards

If the product does not perform as described on this datasheet, we will offer a refund or replacement. For full details of the Abpromise, please visit <https://www.abcam.co.jp/abpromise> or contact our technical team.

Terms and conditions

- Guarantee only valid for products bought direct from Abcam or one of our authorized distributors