


### Anti-LIG1 antibody [EPR12464] ab177946

リコンビナント RabMAb

★★★★★ [2 Abreviews](#) [5 References](#) [画像数 5](#)

#### 製品の概要

製品名	Anti-LIG1 antibody [EPR12464]
製品の詳細	Rabbit monoclonal [EPR12464] to LIG1
由来種	Rabbit
アプリケーション	<b>適用あり:</b> WB, IHC-P, ICC/IF <b>適用なし:</b> Flow Cyt or IP
種交差性	<b>交差種:</b> Human <b>交差が予測される動物種:</b> Rat  <b>非交差種:</b> Mouse
免疫原	Synthetic peptide within Human LIG1 aa 1-100 (Cysteine residue). The exact sequence is proprietary. Database link: <a href="#">P18858</a>
ポジティブ・コントロール	WB: HeLa, Jurkat and Molt4 cell lysates IHC-P: Human breast and thyroid gland tissues ICC/IF: HeLa cells.
特記事項	This product is a recombinant monoclonal antibody, which offers several advantages including: <ul style="list-style-type: none"><li>- High batch-to-batch consistency and reproducibility</li><li>- Improved sensitivity and specificity</li><li>- Long-term security of supply</li><li>- Animal-free production</li></ul> For more information <a href="#">see here</a> . Our RabMAb <sup>®</sup> technology is a patented hybridoma-based technology for making rabbit monoclonal antibodies. For details on our patents, please refer to <a href="#">RabMAb<sup>®</sup> patents</a> .

#### 製品の特性

製品の状態	Liquid
保存方法	Shipped at 4°C. Store at +4°C short term (1-2 weeks). Upon delivery aliquot. Store at -20°C long term. Avoid freeze / thaw cycle.
バッファー	pH: 7.20 Preservative: 0.01% Sodium azide Constituents: 9% PBS, 40% Glycerol (glycerin, glycerine), 0.05% BSA, 50% Tissue culture supernatant

精製度	Protein A purified
ポリ/モノ	モノクローナル
クローン名	EPR12464
アイソタイプ	IgG

## アプリケーション

**The Abpromise guarantee** Abpromise保証は、次のテスト済みアプリケーションにおけるab177946の使用に適用されず  
 アプリケーションノートには、推奨の開始希釈率がありますが、適切な希釈率につきましてはご確認ください。

アプリケーション	Abreviews	特記事項
WB	★★★★★ (1)	1/1000 - 1/10000. Predicted molecular weight: 102 kDa.
IHC-P	★★★★★ (1)	1/50 - 1/100. Perform heat mediated antigen retrieval with citrate buffer pH 6 before commencing with IHC staining protocol.
ICC/IF		1/100 - 1/250.

**追加情報** Is unsuitable for Flow Cyt or IP.

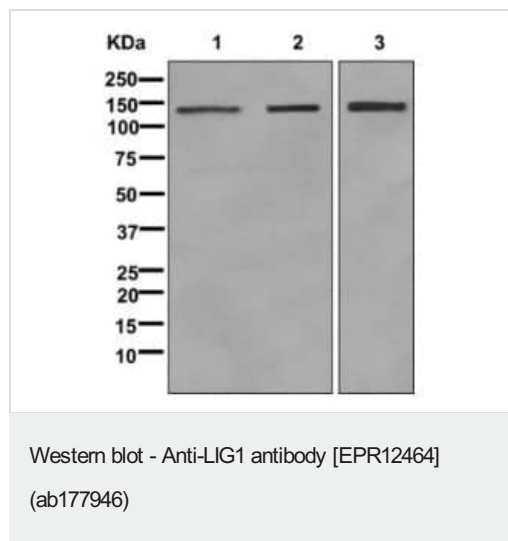
## ターゲット情報

**機能** DNA ligase that seals nicks in double-stranded DNA during DNA replication, DNA recombination and DNA repair.

**配列類似性** Belongs to the ATP-dependent DNA ligase family.

**細胞内局在** Nucleus.

## 画像



**All lanes** : Anti-LIG1 antibody [EPR12464] (ab177946) at 1/1000 dilution

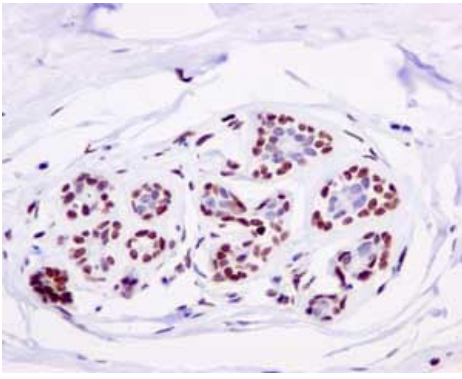
**Lane 1** : HeLa cell lysate

**Lane 2** : Jurkat cell lysate

**Lane 3** : Molt 4 cell lysate

Lysates/proteins at 10 µg per lane.

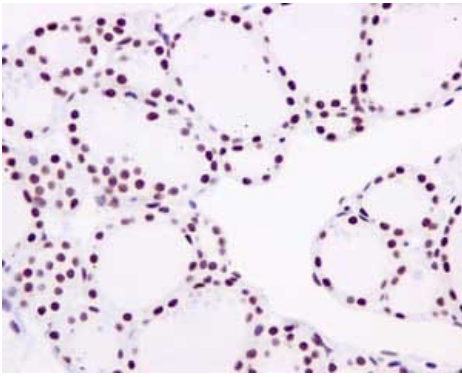
**Predicted band size:** 102 kDa



Immunohistochemistry (Formalin/PFA-fixed paraffin-embedded sections) - Anti-LIG1 antibody [EPR12464] (ab177946)

Immunohistochemical analysis of paraffin-embedded human breast tissue labeling LIG1 with ab177946 at 1/50 dilution.

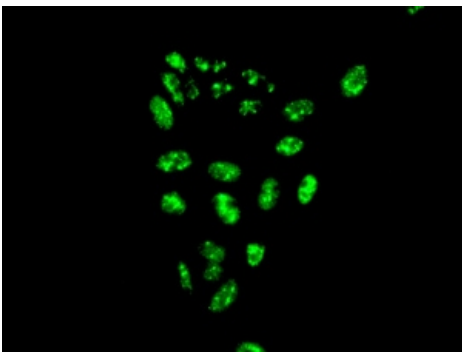
Perform heat mediated antigen retrieval with citrate buffer pH 6 before commencing with IHC staining protocol.



Immunohistochemistry (Formalin/PFA-fixed paraffin-embedded sections) - Anti-LIG1 antibody [EPR12464] (ab177946)

Immunohistochemical analysis of paraffin-embedded Human thyroid gland tissue labeling LIG1 with ab177946 at 1/50 dilution.

Perform heat mediated antigen retrieval with citrate buffer pH 6 before commencing with IHC staining protocol.



Immunocytochemistry/ Immunofluorescence - Anti-LIG1 antibody [EPR12464] (ab177946)

Immunofluorescent analysis of HeLa cells labeling LIG1 with ab177946 at 1/100 dilution.

Why choose a recombinant antibody?

**Research with confidence**  
Consistent and reproducible results

**Long-term and scalable supply**  
Recombinant technology

**Success from the first experiment**  
Confirmed specificity

**Ethical standards compliant**  
Animal-free production

Anti-LIG1 antibody [EPR12464] (ab177946)

**Please note:** All products are "FOR RESEARCH USE ONLY. NOT FOR USE IN DIAGNOSTIC PROCEDURES"

### Our Abpromise to you: Quality guaranteed and expert technical support

---

- Replacement or refund for products not performing as stated on the datasheet
- Valid for 12 months from date of delivery
- Response to your inquiry within 24 hours
- We provide support in Chinese, English, French, German, Japanese and Spanish
- Extensive multi-media technical resources to help you
- We investigate all quality concerns to ensure our products perform to the highest standards

If the product does not perform as described on this datasheet, we will offer a refund or replacement. For full details of the Abpromise, please visit <https://www.abcam.co.jp/abpromise> or contact our technical team.

### Terms and conditions

---

- Guarantee only valid for products bought direct from Abcam or one of our authorized distributors