


Anti-LHX5 antibody ab127545

画像 1

医薬用外劇物

製品の概要

製品名	Anti-LHX5 antibody
製品の詳細	Rabbit polyclonal to LHX5
由来種	Rabbit
アプリケーション	適用あり: WB
種交差性	交差種: Human 交差が予測される動物種: Mouse, Rat, Cow, Xenopus laevis, Zebrafish 
免疫原	Recombinant fragment, corresponding to a region within internal sequence amino acids 79-277 of Human LHX5 (Q9H2C1).
ポジティブ・コントロール	A431, 293T, Jurkat and Raji whole cell lysates.
特記事項	<p>The Life Science industry has been in the grips of a reproducibility crisis for a number of years. Abcam is leading the way in addressing this with our range of recombinant monoclonal antibodies and knockout edited cell lines for gold-standard validation. Please check that this product meets your needs before purchasing.</p> <p>If you have any questions, special requirements or concerns, please send us an inquiry and/or contact our Support team ahead of purchase. Recommended alternatives for this product can be found below, along with publications, customer reviews and Q&As</p>

製品の特性

製品の状態	Liquid
保存方法	Shipped at 4°C. Upon delivery aliquot. Store at -20°C or -80°C. Avoid freeze / thaw cycle.
バッファー	pH: 7.00 Preservative: 0.01% Thimerosal (merthiolate) Constituents: 1.21% Tris, 0.75% Glycine, 20% Glycerol (glycerin, glycerine)
精製度	Immunogen affinity purified
ポリ/モノ	ポリクローナル
アイソタイプ	IgG

アプリケーション

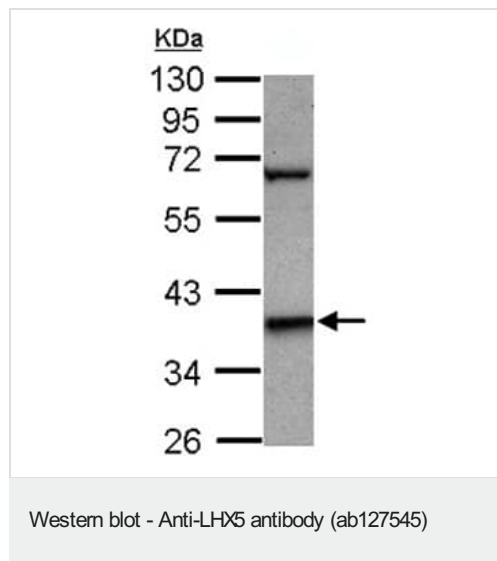
The Abpromise guarantee Abpromise保証は、次のテスト済みアプリケーションにおけるab127545の使用に適用されます
アプリケーションノートには、推奨の開始希釈率がありますが、適切な希釈率につきましてはご検討ください。

アプリケーション	Abreviews	特記事項
WB		1/500 - 1/3000. Predicted molecular weight: 44 kDa.

ターゲット情報

機能	Plays an essential role in the regulation of neuronal differentiation and migration during development of the central nervous system.
組織特異性	Expressed in fetal brain and in various regions of the adult central nervous system including the spinal cord, the thalamus, and the cerebellum.
配列類似性	Contains 1 homeobox DNA-binding domain. Contains 2 LIM zinc-binding domains.
細胞内局在	Nucleus.

画像



Anti-LHX5 antibody (ab127545) at 1/1000 dilution + A431 whole cell lysate at 30 µg

Developed using the ECL technique.

Predicted band size: 44 kDa

10% SDS PAGE

Please note: All products are "FOR RESEARCH USE ONLY. NOT FOR USE IN DIAGNOSTIC PROCEDURES"

Our Abpromise to you: Quality guaranteed and expert technical support

- Replacement or refund for products not performing as stated on the datasheet
- Valid for 12 months from date of delivery
- Response to your inquiry within 24 hours
- We provide support in Chinese, English, French, German, Japanese and Spanish
- Extensive multi-media technical resources to help you

- We investigate all quality concerns to ensure our products perform to the highest standards

If the product does not perform as described on this datasheet, we will offer a refund or replacement. For full details of the Abpromise, please visit <https://www.abcam.co.jp/abpromise> or contact our technical team.

Terms and conditions

- Guarantee only valid for products bought direct from Abcam or one of our authorized distributors