


### Anti-Leptin Receptor antibody ab104403

★★★★☆ [3 Abreviews](#) [14 References](#) [画像数 2](#)

#### 製品の概要

製品名	Anti-Leptin Receptor antibody
製品の詳細	Rabbit polyclonal to Leptin Receptor
由来種	Rabbit
特異性	From Jan 2024, QC testing of replenishment batches of this polyclonal changed. All tested and expected application and reactive species combinations are still covered by our Abcam product promise. However, we no longer test all applications. For more information on a specific batch, please contact our Scientific Support who will be happy to help.
アプリケーション	<b>適用あり:</b> WB, IHC-P <b>適用なし:</b> ICC/IF
種交差性	<b>交差種:</b> Human <b>交差が予測される動物種:</b> Macaque monkey 
免疫原	Synthetic peptide within Human Leptin Receptor aa 450-550 conjugated to keyhole limpet haemocyanin. The exact sequence is proprietary. Database link: <a href="#">P48357</a> (Peptide available as <a href="#">ab115940</a> )
ポジティブ・コントロール	WB: HepG2 whole cell lysate. IHC-P: human normal kidney.
特記事項	<p>The Life Science industry has been in the grips of a reproducibility crisis for a number of years. Abcam is leading the way in addressing this with our range of recombinant monoclonal antibodies and knockout edited cell lines for gold-standard validation. Please check that this product meets your needs before purchasing.</p> <p>If you have any questions, special requirements or concerns, please send us an inquiry and/or contact our Support team ahead of purchase. Recommended alternatives for this product can be found below, along with publications, customer reviews and Q&amp;As</p>

#### 製品の特性

製品の状態	Liquid
保存方法	Shipped at 4°C. Store at +4°C short term (1-2 weeks). Upon delivery aliquot. Store at -20°C or -80°C. Avoid freeze / thaw cycle.
バッファー	pH: 7.40 Preservative: 0.02% Sodium azide

Constituent: PBS

Batches of this product that have a concentration < 1mg/ml may have BSA added as a stabilising agent. If you would like information about the formulation of a specific lot, please contact our scientific support team who will be happy to help.

精製度 Immunogen affinity purified  
ポリ/モノ ポリクローナル  
アイソタイプ IgG

## アプリケーション

**The Abpromise guarantee** Abpromise保証は、次のテスト済みアプリケーションにおけるab104403の使用に適用されます  
アプリケーションノートには、推奨の開始希釈率がありますが、適切な希釈率につきましてはご検討ください。

アプリケーション	Abreviews	特記事項
WB	★★★★★ (2)	Use a concentration of 1 µg/ml. Detects a band of approximately 150 kDa (predicted molecular weight: 132 kDa).
IHC-P		Use a concentration of 5 µg/ml.

追加情報 Is unsuitable for ICC/IF.

## ターゲット情報

**機能** Receptor for obesity factor (leptin). On ligand binding, mediates signaling through JAK2/STAT3. Involved in the regulation of fat metabolism and, in a hematopoietic pathway, required for normal lymphopoiesis. May play a role in reproduction. Can also mediate the ERK/FOS signaling pathway.

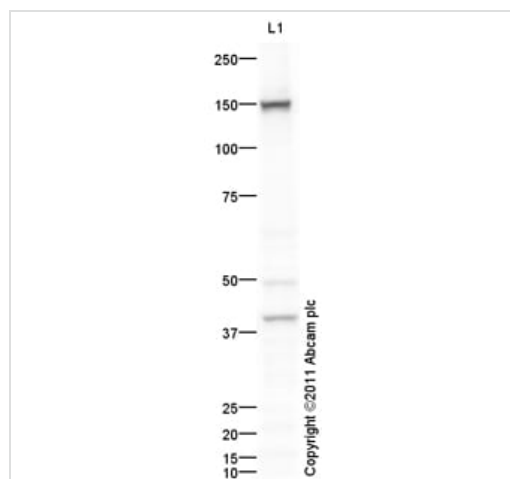
**組織特異性** Isoform A is expressed in fetal liver and in hematopoietic tissues and choroid plexus. In adults highest expression in heart, liver, small intestine, prostate and ovary. Low level in lung and kidney. Isoform B is highly expressed in hypothalamus.

**配列類似性** Belongs to the type I cytokine receptor family. Type 2 subfamily.  
Contains 4 fibronectin type-III domains.  
Contains 1 Ig-like (immunoglobulin-like) domain.

**ドメイン** The cytoplasmic domain may be essential for intracellular signal transduction by activation of JAK tyrosine kinase and STATs.  
The WSXWS motif appears to be necessary for proper protein folding and thereby efficient intracellular transport and cell-surface receptor binding.  
The box 1 motif is required for JAK interaction and/or activation.

**翻訳後修飾** On ligand binding, phosphorylated on two conserved C-terminal tyrosine residues (isoform B only) by JAK2. Tyr-986 is required for complete binding and activation of PTPN11, ERK/FOS activation and, for interaction with SOCS3 (By similarity). Phosphorylation on Tyr-1141 is required for STAT3 binding/activation.

**細胞内局在** Secreted and Cell membrane.



Western blot - Anti-Leptin Receptor antibody  
(ab104403)

Anti-Leptin Receptor antibody (ab104403) at 1 µg/ml + HepG2  
(Human hepatocellular liver carcinoma cell line) Whole Cell Lysate  
at 10 µg

### Secondary

Goat Anti-Rabbit IgG H&L (HRP) preadsorbed ([ab97080](#)) at  
1/5000 dilution

Developed using the ECL technique.

Performed under reducing conditions.

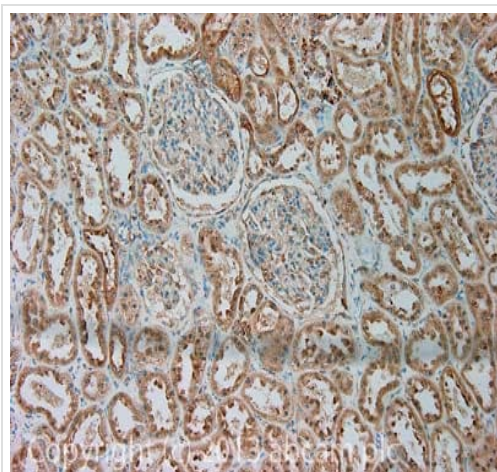
**Predicted band size:** 132 kDa

**Observed band size:** 150 kDa

**Additional bands at:** 40 kDa, 49 kDa. We are unsure as to the  
identity of these extra bands.

**Exposure time:** 1 minute

Leptin Receptor contains an extensive number of potential  
glycosylation sites (SwissProt) which may explain its migration at a  
higher molecular weight than predicted.



Immunohistochemistry (Formalin/PFA-fixed paraffin-  
embedded sections) - Anti-Leptin Receptor antibody  
(ab104403)

IHC image of aLeptin Receptor staining in Human normal kidney  
formalin fixed paraffin embedded tissue section, performed on a  
Leica Bond™ system using the standard protocol F. The section  
was pre-treated using heat mediated antigen retrieval with sodium  
citrate buffer (pH6, epitope retrieval solution 1) for 20 mins. The  
section was then incubated with ab104403, 5µg/ml, for 15 mins at  
room temperature and detected using an HRP conjugated compact  
polymer system. DAB was used as the chromogen. The section  
was then counterstained with haematoxylin and mounted with DPX.

For other IHC staining systems (automated and non-automated)  
customers should optimize variable parameters such as antigen  
retrieval conditions, primary antibody concentration and antibody  
incubation times.

### **Our Abpromise to you: Quality guaranteed and expert technical support**

---

- Replacement or refund for products not performing as stated on the datasheet
- Valid for 12 months from date of delivery
- Response to your inquiry within 24 hours
- We provide support in Chinese, English, French, German, Japanese and Spanish
- Extensive multi-media technical resources to help you
- We investigate all quality concerns to ensure our products perform to the highest standards

If the product does not perform as described on this datasheet, we will offer a refund or replacement. For full details of the Abpromise, please visit <https://www.abcam.co.jp/abpromise> or contact our technical team.

### **Terms and conditions**

---

- Guarantee only valid for products bought direct from Abcam or one of our authorized distributors