


### Anti-LDB1 antibody ab96799

★★★★★ [1 Abreviews](#) [7 References](#) [画像数 9](#)

#### 製品の概要

製品名	Anti-LDB1 antibody
製品の詳細	Rabbit polyclonal to LDB1
由来種	Rabbit
アプリケーション	<b>適用あり:</b> WB, IHC-P, ICC/IF, IP
種交差性	<b>交差種:</b> Mouse, Rat, Human <b>交差が予測される動物種:</b> Pig, Zebrafish 
免疫原	Recombinant fragment corresponding to a region within amino acids 50 and 345 of Human LDB1 (NP_003884)
ポジティブ・コントロール	WB: HEK293T, A431, HeLa, HepG2 and Raji cell lysates; Mouse brain tissue lysate. IHC-P: U87 xenograft; Mouse muscle and brain tissues. IHC-Fr: Mouse brain tissue. ICC/IF: HeLa cells. IP: HEK293T cells.
特記事項	<p>The Life Science industry has been in the grips of a reproducibility crisis for a number of years. Abcam is leading the way in addressing this with our range of recombinant monoclonal antibodies and knockout edited cell lines for gold-standard validation. Please check that this product meets your needs before purchasing.</p> <p>If you have any questions, special requirements or concerns, please send us an inquiry and/or contact our Support team ahead of purchase. Recommended alternatives for this product can be found below, along with publications, customer reviews and Q&amp;As</p>

#### 製品の特性

製品の状態	Liquid
保存方法	Shipped at 4°C. Upon delivery aliquot. Store at -20°C or -80°C. Avoid freeze / thaw cycle.
バッファー	pH: 7.00 Preservative: 0.025% Proclin 300 Constituents: 79% PBS, 20% Glycerol (glycerin, glycerine)
精製度	Immunogen affinity purified
ポリ/モノ	ポリクローナル
アイソタイプ	IgG

## アプリケーション

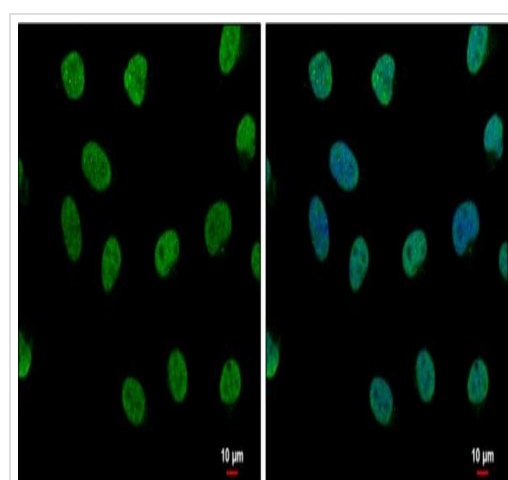
The Abpromise guarantee Abpromise保証は、 次のテスト済みアプリケーションにおけるab96799の使用に適用されます  
アプリケーションノートには、推奨の開始希釈率がありますが、適切な希釈率につきましてはご検討ください。

アプリケーション	Abreviews	特記事項
WB		1/500 - 1/3000. Predicted molecular weight: 47 kDa.
IHC-P		1/100 - 1/1000.
ICC/IF		1/100 - 1/1000.
IP		Use at an assay dependent concentration.

## ターゲット情報

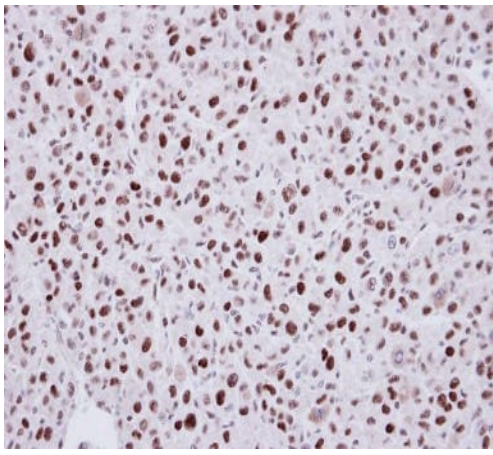
機能	Binds to the LIM domain of a wide variety of LIM domain-containing transcription factors. May regulate the transcriptional activity of LIM-containing proteins by determining specific partner interactions. May play a role in the development of motor neurons. Acts synergistically with LHX1/LIM1 in axis formation and activation of gene expression. Acts with LMO2 in the regulation of red blood cell development, maintaining erythroid precursors in an immature state.
組織特異性	Expressed in a wide range of adult tissues including brain, heart, skeletal muscle, colon, thymus, spleen, kidney, liver, small intestine, lung and peripheral blood leukocytes.
配列類似性	Belongs to the LDB family.
ドメイン	The dimerization domain is located in the N-terminus.
翻訳後修飾	Ubiquitinated by RLIM/RNF12, leading to its degradation by the proteasome.
細胞内局在	Nucleus.

## 画像



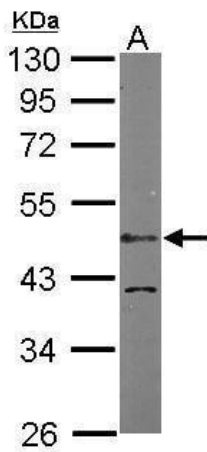
HeLa cells stained for LDB1 (green) using ab96799 at 1/500 dilution in ICC/IF.

Immunocytochemistry/ Immunofluorescence - Anti-LDB1 antibody (ab96799)



Immunohistochemistry (Formalin/PFA-fixed paraffin-embedded sections) - Anti-LDB1 antibody (ab96799)

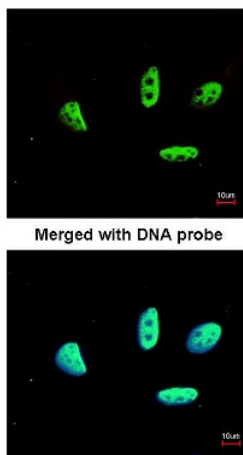
Immunohistochemical analysis of paraffin-embedded U87 xenograft using ab96799 at a dilution of 1/100.



Anti-LDB1 antibody (ab96799) at 1/1000 dilution + Mouse brain lysate at 50 µg

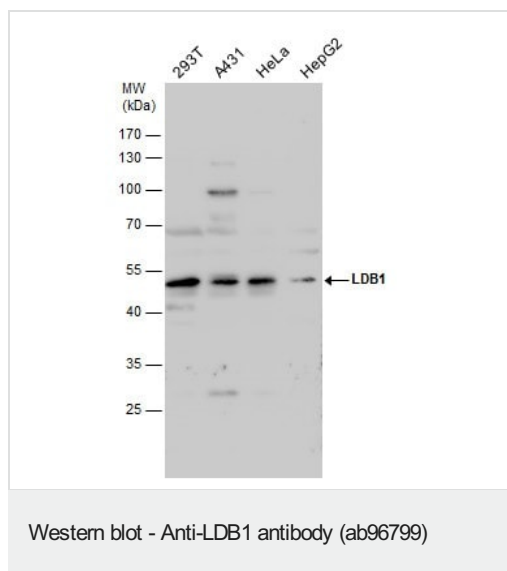
**Predicted band size: 47 kDa**

Western blot - Anti-LDB1 antibody (ab96799)



Immunofluorescence analysis of paraformaldehyde-fixed HeLa cells using ab96799 at a dilution of 1/200.

Immunocytochemistry/ Immunofluorescence - Anti-LDB1 antibody (ab96799)



**All lanes :** Anti-LDB1 antibody (ab96799) at 1/1000 dilution

**Lane 1 :** HEK-293T (human epithelial cell line from embryonic kidney transformed with large T antigen) whole cell lysate

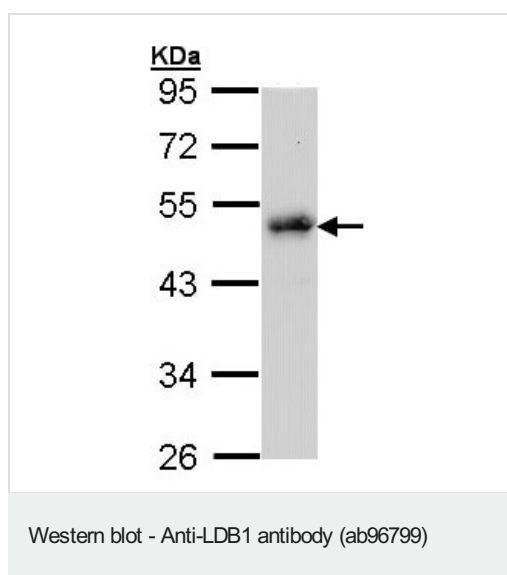
**Lane 2 :** A431 (human epidermoid carcinoma cell line) whole cell lysate

**Lane 3 :** HeLa (human epithelial cell line from cervix adenocarcinoma) whole cell lysate

**Lane 4 :** HepG2 (human liver hepatocellular carcinoma cell line) whole cell lysate

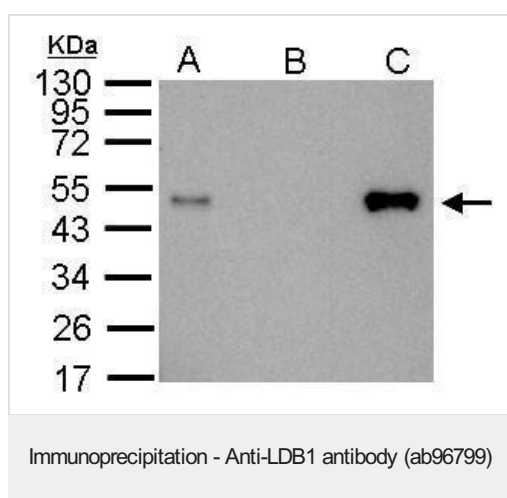
Lysates/proteins at 30 µg per lane.

**Predicted band size:** 47 kDa



Anti-LDB1 antibody (ab96799) at 1/1000 dilution + Raji whole cell lysate at 30 µg

**Predicted band size:** 47 kDa



LDB1 was immunoprecipitated from 1000 µg 293T (human epithelial cell line from embryonic kidney transformed with large T antigen) whole cell lysate with ab96799. Western blot was performed from the immunoprecipitate using 2.5 µg of ab96799 at 1/1000 dilution.

**Lane A:** 20 µg 293T whole cell lysate/extract.

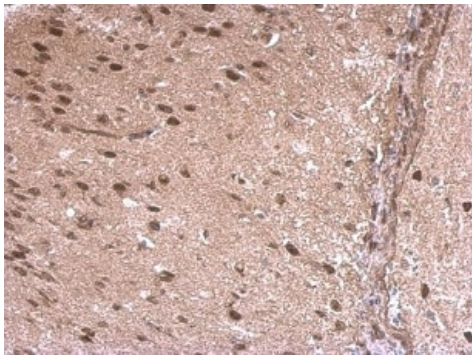
**Lane B:** Control with 2.5 µg of preimmune rabbit IgG.

**Lane C:** ab96799 IP in 293T (12% SDS-PAGE).



Paraffin-embedded mouse muscle tissue stained for LDB1 using ab96799 at 1/500 dilution in immunohistochemical analysis.

Immunohistochemistry (Formalin/PFA-fixed paraffin-embedded sections) - Anti-LDB1 antibody (ab96799)



Paraffin-embedded rat middle brain tissue stained for LDB1 using ab96799 at a/500 dilution in immunohistochemical analysis.

Immunohistochemistry (Formalin/PFA-fixed paraffin-embedded sections) - Anti-LDB1 antibody (ab96799)

**Please note:** All products are "FOR RESEARCH USE ONLY. NOT FOR USE IN DIAGNOSTIC PROCEDURES"

### Our Abpromise to you: Quality guaranteed and expert technical support

- Replacement or refund for products not performing as stated on the datasheet
- Valid for 12 months from date of delivery
- Response to your inquiry within 24 hours
- We provide support in Chinese, English, French, German, Japanese and Spanish
- Extensive multi-media technical resources to help you
- We investigate all quality concerns to ensure our products perform to the highest standards

If the product does not perform as described on this datasheet, we will offer a refund or replacement. For full details of the Abpromise, please visit <https://www.abcam.co.jp/abpromise> or contact our technical team.

## Terms and conditions

---

- Guarantee only valid for products bought direct from Abcam or one of our authorized distributors