


# Anti-LC3B antibody - N-terminal ab229327

[10 References](#) [画像数 14](#)

### 製品の概要

製品名	Anti-LC3B antibody - N-terminal
製品の詳細	Rabbit polyclonal to LC3B - N-terminal
由来種	Rabbit
アプリケーション	<b>適用あり:</b> WB, Flow Cyt, ICC/IF, IP, IHC-P
種交差性	<b>交差種:</b> Mouse, Rat, Human <b>交差が予測される動物種:</b> Cow, Chimpanzee, Zebrafish, Rhesus monkey, Medaka fish 
免疫原	Synthetic peptide within Human LC3B (N terminal). The exact sequence is proprietary. (Carrier-protein conjugated). Database link: <a href="#">Q9GZQ8</a>
ポジティブ・コントロール	ICC/IF: HeLa cells untreated and treated with 50µM Chloroquine for 24 hr; Hep G2 cells untreated and treated with 3 µM Thapsigargin for 12 hrs. WB: Huh7 whole cell lysate; NTERA-2 cl.D1 [NT2/D1], PC-3, U-87 MG and SK-N-SH whole cell extracts; Mouse and rat brain lysates; Hep G2 cell lysate untreated and treated with 3 µM Thapsigargin; HeLa whole cell extract untreated and treated with 50µM Chloroquine for 24 hr. IHC-P: Mouse brain tissue. IP: U-87 MG whole cell extract. Flow Cyt: HeLa cells.
特記事項	<p>The Life Science industry has been in the grips of a reproducibility crisis for a number of years. Abcam is leading the way in addressing this with our range of recombinant monoclonal antibodies and knockout edited cell lines for gold-standard validation. Please check that this product meets your needs before purchasing.</p> <p>If you have any questions, special requirements or concerns, please send us an inquiry and/or contact our Support team ahead of purchase. Recommended alternatives for this product can be found below, along with publications, customer reviews and Q&amp;As</p>

### 製品の特性

製品の状態	Liquid
保存方法	Shipped at 4°C. Store at +4°C short term (1-2 weeks). Upon delivery aliquot. Store at -20°C long term. Avoid freeze / thaw cycle.
バッファー	pH: 7.00 Preservative: 0.025% Proclin 300 Constituents: 78% PBS, 1% BSA, 20% Glycerol (glycerin, glycerine)

精製度	Immunogen affinity purified
ポリ/モノ	ポリクローナル
アイソタイプ	IgG

## アプリケーション

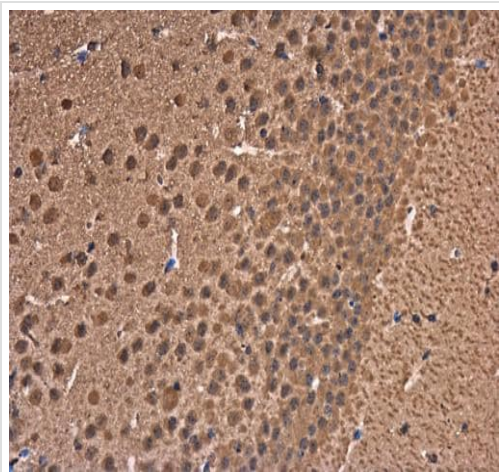
**The Abpromise guarantee**      **Abpromise保証は、次のテスト済みアプリケーションにおけるab229327の使用に適用されず**  
 アプリケーションノートには、推奨の開始希釈率がありますが、適切な希釈率につきましてはご検討ください。

アプリケーション	Abreviews	特記事項
WB		1/500 - 1/3000. Predicted molecular weight: 15 kDa.
Flow Cyt		1/50 - 1/200.
ICC/IF		1/100 - 1/1000.
IP		1/100 - 1/500.
IHC-P		1/100 - 1/1000.

## ターゲット情報

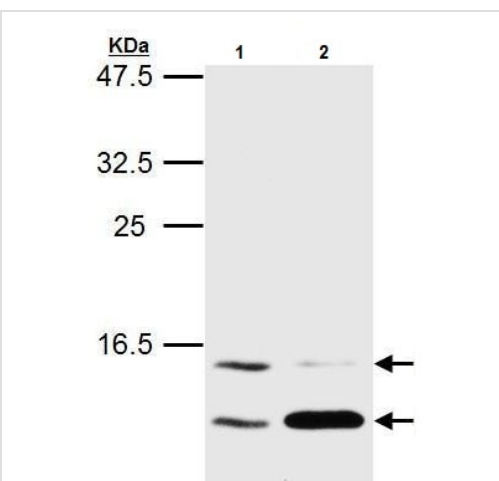
機能	Probably involved in formation of autophagosomal vacuoles (autophagosomes).
組織特異性	Most abundant in heart, brain, skeletal muscle and testis. Little expression observed in liver.
配列類似性	Belongs to the MAP1 LC3 family.
翻訳後修飾	The precursor molecule is cleaved by APG4B/ATG4B to form LC3-I. This is activated by APG7L/ATG7, transferred to ATG3 and conjugated to phospholipid to form LC3-II.
細胞内局在	Cytoplasm > cytoskeleton. Endomembrane system. Cytoplasmic vesicle > autophagosome membrane. LC3-II binds to the autophagic membranes.

## 画像



Immunohistochemistry (Formalin/PFA-fixed paraffin-embedded sections) - Anti-LC3B antibody - N-terminal (ab229327)

Paraffin-embedded mouse brain tissue stained for LC3B using ab229327 at 1/500 dilution in immunohistochemical analysis.



Western blot - Anti-LC3B antibody - N-terminal (ab229327)

**All lanes** : Anti-LC3B antibody - N-terminal (ab229327) at 1/1500 dilution

**Lane 1** : Huh7 whole cell lysate (untreated)

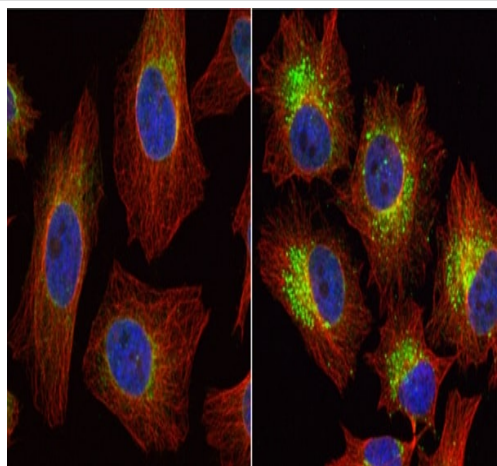
**Lane 2** : Huh7 whole cell lysate (3  $\mu$ M Thapsigargin treatment for 12 hr)

Lysates/proteins at 20  $\mu$ g per lane.

**Secondary**

**All lanes** : HRP-conjugated anti-rabbit IgG

**Predicted band size:** 15 kDa

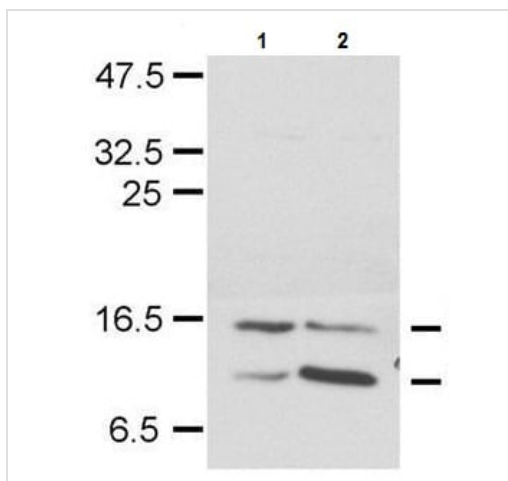


Immunocytochemistry/ Immunofluorescence - Anti-LC3B antibody - N-terminal (ab229327)

4% paraformaldehyde-fixed HeLa (human epithelial cell line from cervix adenocarcinoma) cells, mock treated (left panel) or treated with 50  $\mu$ M Chloroquine for 24 hr (right panel), stained for LC3B (green) using ab229327 at 1/2000 dilution in ICC/IF.

Red: alpha Tubulin, a cytoskeleton marker, stained by alpha Tubulin antibody at 1/1000 dilution.

Blue: Hoechst 33342 staining.



Western blot - Anti-LC3B antibody - N-terminal (ab229327)

**All lanes** : Anti-LC3B antibody - N-terminal (ab229327) at 1/1500 dilution

**Lane 1** : Huh7 whole cell lysate (un-infected)

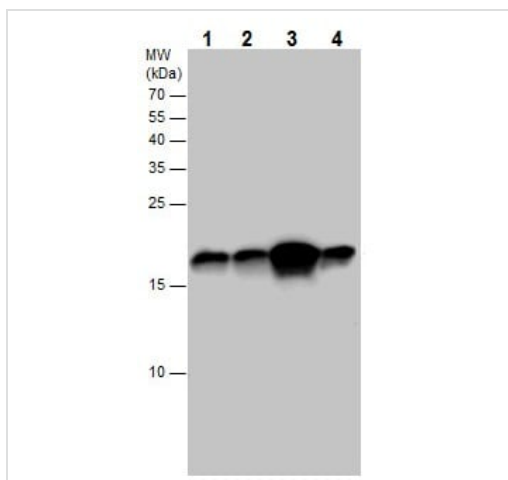
**Lane 2** : Huh7 whole cell lysate (HCV-infected)

Lysates/proteins at 20  $\mu$ g per lane.

**Secondary**

**All lanes** : HRP-conjugated anti-rabbit IgG

**Predicted band size:** 15 kDa



Western blot - Anti-LC3B antibody - N-terminal (ab229327)

**All lanes** : Anti-LC3B antibody - N-terminal (ab229327) at 1/1000 dilution

**Lane 1** : NTERA-2 cl.D1 [NT2/D1] (human malignant pluripotent embryonic carcinoma cell line) whole cell extract

**Lane 2** : PC-3 (human prostate adenocarcinoma cell line) whole cell extract

**Lane 3** : U-87 MG (human glioblastoma-astrocytoma epithelial cell line) whole cell extract

**Lane 4** : SK-N-SH (human neuroblastoma cell line) whole cell extract

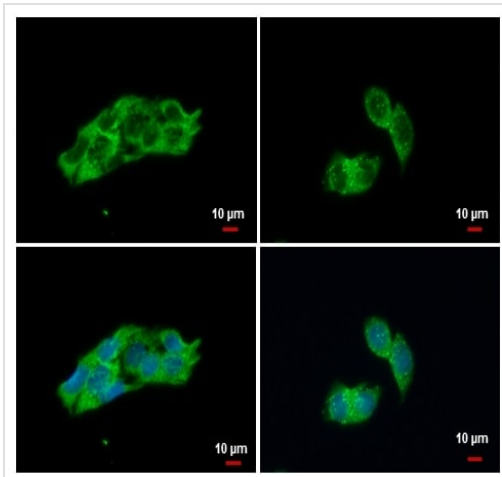
Lysates/proteins at 30  $\mu$ g per lane.

**Secondary**

**All lanes :** HRP-conjugated anti-rabbit IgG

**Predicted band size:** 15 kDa

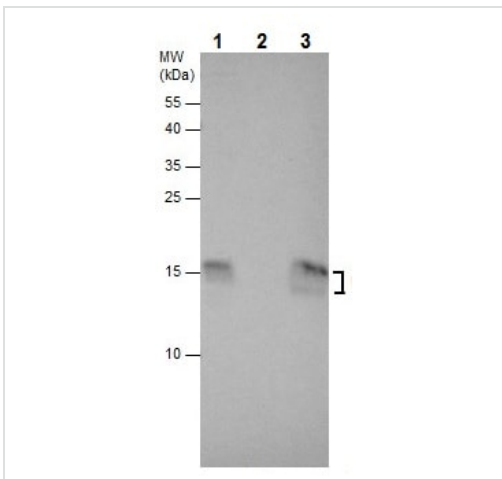
15% SDS-PAGE gel.



Immunocytochemistry/ Immunofluorescence - Anti-LC3B antibody - N-terminal (ab229327)

Ice-cold methanol-fixed, ice-cold acetone permeabilized HepG2 (human liver hepatocellular carcinoma cell line) cells, mock treated (left panels) or treated with with 3 μM Thapsigargin for 12 hrs (right panels), stained for LC3B (green) using ab229327 at 1/500 dilution in ICC/IF.

Blue: Hoechst 33342 staining.



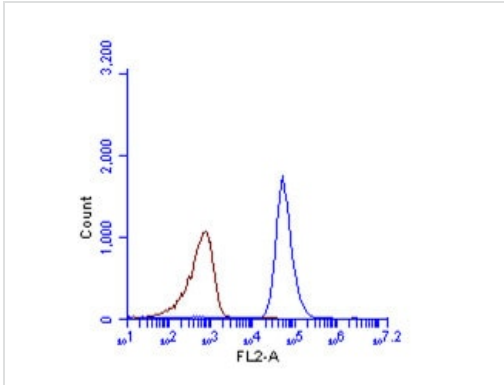
Immunoprecipitation - Anti-LC3B antibody - N-terminal (ab229327)

LC3B was immunoprecipitated from U-87 MG (human glioblastoma-astrocytoma epithelial cell line) whole cell extract (1 mg for IP, 20% of IP loaded) with 5 μg ab229327. Western blot was performed from the immunoprecipitate using ab229327. Anti-Rabbit IgG was used as a secondary reagent.

**Lane 1:** U-87 MG whole cell extract.

**Lane 2:** Control IgG IP in U-87 MG whole cell extract.

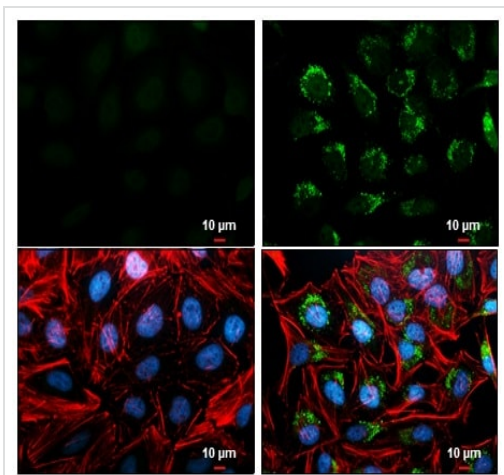
**Lane 3:** ab229327 IP in U-87 MG whole cell extract.



Flow Cytometry - Anti-LC3B antibody - N-terminal (ab229327)

Flow cytometric analysis of 4% paraformaldehyde-fixed HeLa (human epithelial cell line from cervix adenocarcinoma) cell line labeling LC3B with ab229327 at 1/100 dilution (blue) compared with an unlabelled sample (brown).

Acquisition of >20,000 events were collected using Argon ion laser (488nm) and 525/30 bandpass filter.

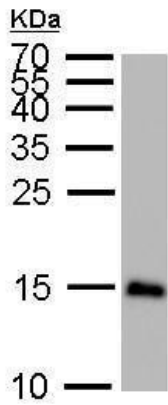


Immunocytochemistry/ Immunofluorescence - Anti-LC3B antibody - N-terminal (ab229327)

4% paraformaldehyde-fixed HeLa (human epithelial cell line from cervix adenocarcinoma) cells, mock treated (left panels) or treated with 50 µM Chloroquine for 24 hr (right panels), stained for LC3B (green) using ab229327 at 1/200 dilution in ICC/IF.

Red: phalloidin, a cytoskeleton marker, at 1/50 dilution.

Blue: Hoechst 33342 staining.



Western blot - Anti-LC3B antibody - N-terminal  
(ab229327)

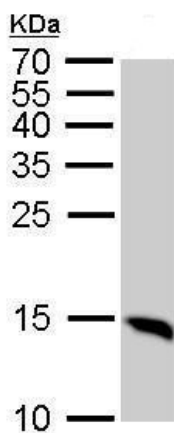
Anti-LC3B antibody - N-terminal (ab229327) at 1/1000 dilution +  
Mouse brain lysate at 50 µg

**Secondary**

HRP-conjugated anti-rabbit IgG

**Predicted band size:** 15 kDa

15% SDS-PAGE gel.



Western blot - Anti-LC3B antibody - N-terminal  
(ab229327)

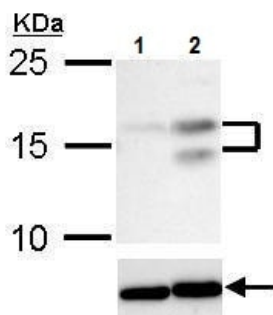
Anti-LC3B antibody - N-terminal (ab229327) at 1/1000 dilution +  
Rat brain lysate at 50 µg

**Secondary**

HRP-conjugated anti-rabbit IgG

**Predicted band size:** 15 kDa

15% SDS-PAGE gel.



Western blot - Anti-LC3B antibody - N-terminal  
(ab229327)

**All lanes :** Anti-LC3B antibody - N-terminal (ab229327) at 1/1000 dilution

**Lane 1 :** Untreated HepG2 (human liver hepatocellular carcinoma cell line) whole cell lysate

**Lane 2 :** HepG2 whole cell lysate treated with 3 µM thapsigargin for 12 hours

Lysates/proteins at 30 µg per lane.

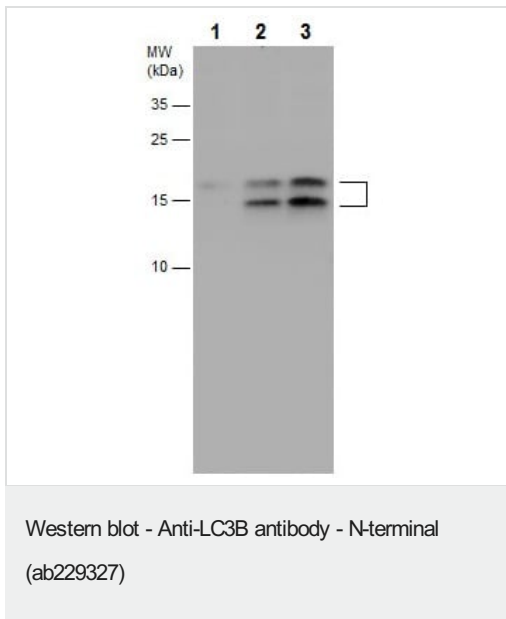
**Secondary**

**All lanes :** HRP-conjugated anti-rabbit IgG

**Predicted band size:** 15 kDa

Lower panel: Beta-actin antibody at 1/20000 dilution.

15% SDS-PAGE gel.



**All lanes** : Anti-LC3B antibody - N-terminal (ab229327) at 1/1000 dilution

**Lane 1** : Untreated HepG2 (human liver hepatocellular carcinoma cell line) whole cell extract

**Lane 2** : HepG2 whole cell extract treated with 3  $\mu$ M thapsigargin for 16 hours

**Lane 3** : HepG2 whole cell extract treated with 3  $\mu$ M thapsigargin for 24 hours

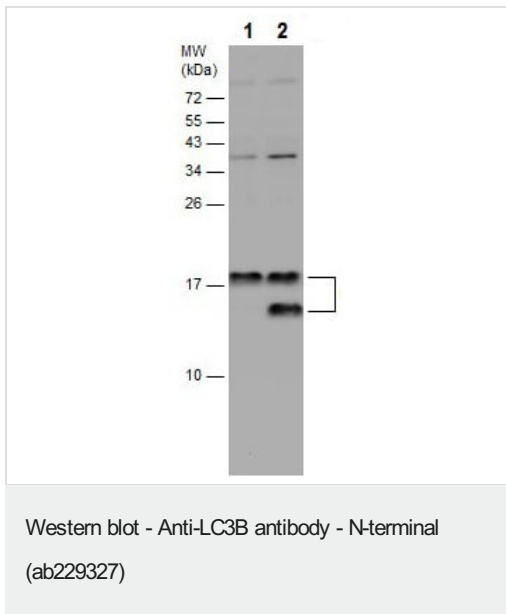
Lysates/proteins at 30  $\mu$ g per lane.

#### Secondary

**All lanes** : HRP-conjugated anti-rabbit IgG

**Predicted band size:** 15 kDa

15% SDS-PAGE gel.



**All lanes** : Anti-LC3B antibody - N-terminal (ab229327) at 1/2500 dilution

**Lane 1** : Untreated HeLa (human epithelial cell line from cervix adenocarcinoma) whole cell extract

**Lane 2** : HeLa whole cell extract treated with 50 $\mu$ M Chloroquine for 24 hours

Lysates/proteins at 30  $\mu$ g per lane.

#### Secondary

**All lanes** : HRP-conjugated anti-rabbit IgG

**Predicted band size:** 15 kDa

15% SDS-PAGE gel.



**Please note:** All products are "FOR RESEARCH USE ONLY. NOT FOR USE IN DIAGNOSTIC PROCEDURES"

### **Our Abpromise to you: Quality guaranteed and expert technical support**

---

- Replacement or refund for products not performing as stated on the datasheet
- Valid for 12 months from date of delivery
- Response to your inquiry within 24 hours
  
- We provide support in Chinese, English, French, German, Japanese and Spanish
- Extensive multi-media technical resources to help you
- We investigate all quality concerns to ensure our products perform to the highest standards

If the product does not perform as described on this datasheet, we will offer a refund or replacement. For full details of the Abpromise, please visit <https://www.abcam.co.jp/abpromise> or contact our technical team.

### **Terms and conditions**

---

- Guarantee only valid for products bought direct from Abcam or one of our authorized distributors