

Anti-LASS6/CERS6 antibody ab115539

2 References [画像数 4](#)

製品の概要

製品名	Anti-LASS6/CERS6 antibody
製品の詳細	Rabbit polyclonal to LASS6/CERS6
由来種	Rabbit
特異性	ab115539 is predicted not to cross-react with LASS5.
アプリケーション	適用あり: ELISA, WB, IHC-P
種交差性	交差種: Mouse, Rat, Human
免疫原	Synthetic peptide. This information is proprietary to Abcam and/or its suppliers.
特記事項	<p>The Life Science industry has been in the grips of a reproducibility crisis for a number of years. Abcam is leading the way in addressing this with our range of recombinant monoclonal antibodies and knockout edited cell lines for gold-standard validation. Please check that this product meets your needs before purchasing.</p> <p>If you have any questions, special requirements or concerns, please send us an inquiry and/or contact our Support team ahead of purchase. Recommended alternatives for this product can be found below, along with publications, customer reviews and Q&As</p>

製品の特性

製品の状態	Liquid
保存方法	Shipped at 4°C. Store at +4°C short term (1-2 weeks). Store at -20°C or -80°C. Avoid freeze / thaw cycle.
バッファー	<p>pH: 7.4</p> <p>Preservative: 0.02% Sodium azide</p> <p>Constituent: 99% PBS</p>
精製度	Protein A purified
ポリ/モノ	ポリクローナル
アイソタイプ	IgG

アプリケーション

The Abpromise guarantee

Abpromise保証は、次のテスト済みアプリケーションにおけるab115539の使用に適用されます

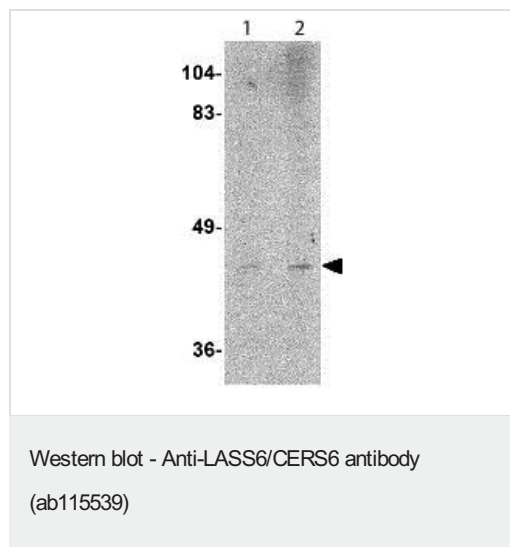
アプリケーションノートには、推奨の開始希釈率がありますが、適切な希釈率につきましてはご確認ください。

アプリケーション	Abreviews	特記事項
ELISA		Use at an assay dependent concentration.
WB		Use a concentration of 1 - 2 µg/ml. Predicted molecular weight: 45 kDa.
IHC-P		Use a concentration of 5 µg/ml. Perform heat mediated antigen retrieval with citrate buffer pH 6 before commencing with IHC staining protocol.

ターゲット情報

機能	May be involved in sphingolipid synthesis or its regulation.
配列類似性	Contains 1 homeobox DNA-binding domain. Contains 1 TLC (TRAM/LAG1/CLN8) domain.
翻訳後修飾	Glycosylation on Asn-18 is not necessary for function.
細胞内局在	Nucleus membrane. Endoplasmic reticulum membrane.

画像

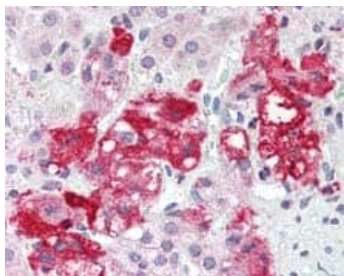


Lane 1 : Anti-LASS6/CERS6 antibody (ab115539) at 1 µg/ml

Lane 2 : Anti-LASS6/CERS6 antibody (ab115539) at 2 µg/ml

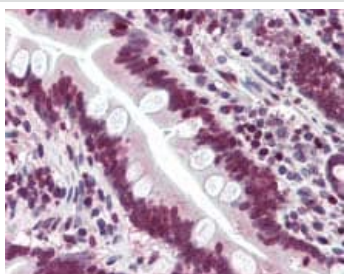
All lanes : Rat brain tissue lysate

Predicted band size: 45 kDa



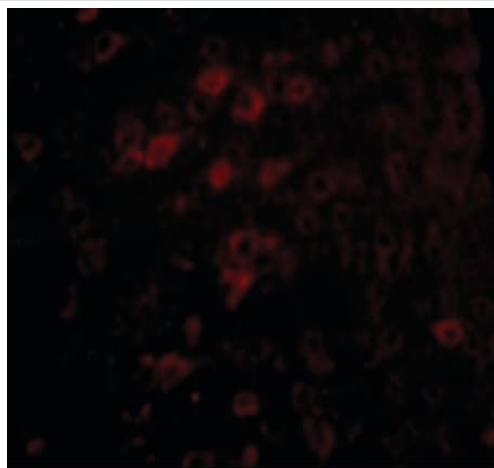
Immunohistochemistry (Formalin/PFA-fixed paraffin-embedded sections) - Anti-LASS6/CERS6 antibody (ab115539)

ab115539, at 5µg/ml, staining LASS6/CERS6 in Formalin-fixed, Paraffin-embedded Human Adrenal tissue by Immunohistochemistry followed by biotinylated secondary antibody, alkaline phosphatase-streptavidin and chromogen.



Immunohistochemistry (Formalin/PFA-fixed paraffin-embedded sections) - Anti-LASS6/CERS6 antibody (ab115539)

ab115539, at 5µg/ml, staining LASS6/CERS6 in Formalin-fixed, Paraffin-embedded Human Small intestine tissue by Immunohistochemistry followed by biotinylated secondary antibody, alkaline phosphatase-streptavidin and chromogen.



Immunohistochemistry (Formalin/PFA-fixed paraffin-embedded sections) - Anti-LASS6/CERS6 antibody (ab115539)

Immunohistochemistry (Formalin/PFA-fixed paraffin-embedded sections) analysis of mouse brain tissue labelling LASS6/CERS6 with ab115539 at 5µg/ml.

Please note: All products are "FOR RESEARCH USE ONLY. NOT FOR USE IN DIAGNOSTIC PROCEDURES"

Our Abpromise to you: Quality guaranteed and expert technical support

- Replacement or refund for products not performing as stated on the datasheet

- Valid for 12 months from date of delivery
- Response to your inquiry within 24 hours
- We provide support in Chinese, English, French, German, Japanese and Spanish
- Extensive multi-media technical resources to help you
- We investigate all quality concerns to ensure our products perform to the highest standards

If the product does not perform as described on this datasheet, we will offer a refund or replacement. For full details of the Abpromise, please visit <https://www.abcam.co.jp/abpromise> or contact our technical team.

Terms and conditions

- Guarantee only valid for products bought direct from Abcam or one of our authorized distributors