

Anti-Langerin antibody [EPR15863] ab192027

リコンビナント **RabMAb**

★★★★★ [1 Abreviews](#) [4 References](#) [画像数 3](#)

製品の概要

製品名	Anti-Langerin antibody [EPR15863]
製品の詳細	Rabbit monoclonal [EPR15863] to Langerin
由来種	Rabbit
アプリケーション	適用あり: IHC-P
種交差性	交差種: Human
免疫原	Recombinant fragment. This information is proprietary to Abcam and/or its suppliers.
ポジティブ・コントロール	IHC-P: Human skin tissue.
特記事項	<p>This product is a recombinant monoclonal antibody, which offers several advantages including:</p> <ul style="list-style-type: none"> - High batch-to-batch consistency and reproducibility - Improved sensitivity and specificity - Long-term security of supply - Animal-free production <p>For more information see here.</p> <p>Our RabMAb[®] technology is a patented hybridoma-based technology for making rabbit monoclonal antibodies. For details on our patents, please refer to RabMAb[®] patents.</p>

製品の特性

製品の状態	Liquid
保存方法	Shipped at 4°C. Store at +4°C short term (1-2 weeks). Upon delivery aliquot. Store at -20°C long term. Avoid freeze / thaw cycle.
バッファー	<p>pH: 7.2</p> <p>Preservative: 0.01% Sodium azide</p> <p>Constituents: PBS, 40% Glycerol (glycerin, glycerine), 0.05% BSA</p>
精製度	Protein A purified
ポリ/モノ	モノクローナル
クローン名	EPR15863
アイソタイプ	IgG

アプリケーション

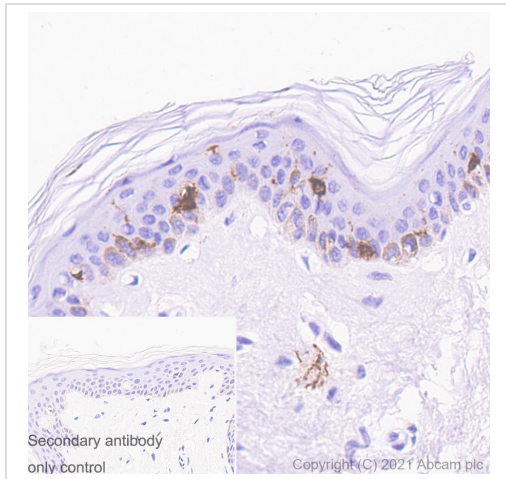
The Abpromise guarantee **Abpromise保証は、** 次のテスト済みアプリケーションにおけるab192027の使用に適用されます
アプリケーションノートには、推奨の開始希釈率がありますが、適切な希釈率につきましてはご検討ください。

アプリケーション	Abreviews	特記事項
IHC-P		1/1000. Perform heat mediated antigen retrieval with Tris/EDTA buffer pH 9.0 before commencing with IHC staining protocol.

ターゲット情報

機能	Calcium-dependent lectin displaying mannose-binding specificity. Induces the formation of Birbeck granules (BGs); is a potent regulator of membrane superimposition and zippering. Binds to sulfated as well as mannosylated glycans, keratan sulfate (KS) and beta-glucans. Facilitates uptake of antigens and is involved in the routing and/or processing of antigen for presentation to T cells. Major receptor on primary Langerhans cells for Candida species, Saccharomyces species, and Malassezia furfur. Protects against human immunodeficiency virus-1 (HIV-1) infection. Binds to high-mannose structures present on the envelope glycoprotein which is followed by subsequent targeting of the virus to the Birbeck granules leading to its rapid degradation.
組織特異性	Exclusively expressed by Langerhans cells. Expressed in astrocytoma and malignant ependymoma, but not in normal brain tissues.
関連疾患	Defects in CD207 are the cause of Birbeck granule deficiency (BIRGD) [MIM:613393]. It is a condition characterized by the absence of Birbeck granules in epidermal Langerhans cells. Despite the lack of Birbeck granules Langerhans cells are present in normal numbers and have normal morphologic characteristics and antigen-presenting capacity.
配列類似性	Contains 1 C-type lectin domain.
ドメイン	The C-type lectin domain mediates dual recognition of both sulfated and mannosylated glycans.
細胞内局在	Membrane. Found in Birbeck granules (BGs), which are organelles consisting of superimposed and zippered membranes.

画像



Immunohistochemistry (Formalin/PFA-fixed paraffin-embedded sections) - Anti-Langerin antibody [EPR15863] (ab192027)

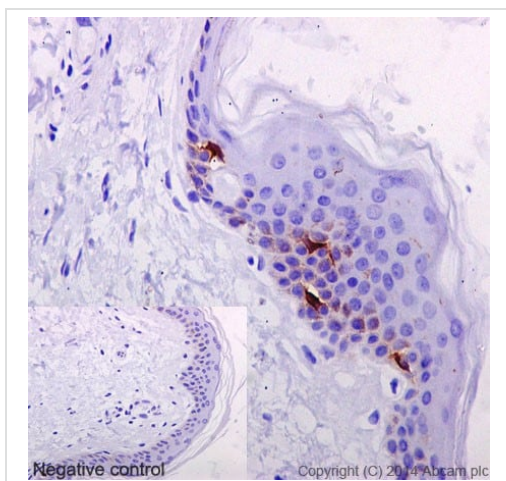
Immunohistochemical analysis of Paraffin-embedded sections of human skin tissue labelling Langerin with ab192027 at 1/1000 dilution, followed by Rabbit specific IHC polymer detection kit HRP/DAB (**ab209101**). Positive staining on the Langerhans cells in the human skin is observed. Counter-stained with Hematoxylin.

Secondary antibody only control: Used PBS instead of primary antibody, secondary antibody is Rabbit specific IHC polymer detection kit HRP/DAB (**ab209101**).

Heat mediated antigen retrieval using Bond™ Epitope Retrieval Solution 2 (pH 9.0) for 20 minutes.

The section was incubated with ab192027 for 30 mins at room temperature.

The immunostaining was performed on a Leica Biosystems BOND® RX instrument.



Immunohistochemistry (Formalin/PFA-fixed paraffin-embedded sections) - Anti-Langerin antibody [EPR15863] (ab192027)

Immunohistochemical analysis of paraffin-embedded human skin tissue labeling Langerin with ab192027 at 1/1000 dilution, followed by prediluted HRP Polymer for Rabbit/Mouse IgG. Counter stained with Hematoxylin. The negative control utilized PBS instead of primary antibody.

Perform heat mediated antigen retrieval with Tris/EDTA buffer pH 9.0 before commencing with IHC staining protocol.

Why choose a recombinant antibody?



Research with confidence
Consistent and reproducible results



Long-term and scalable supply
Recombinant technology



Success from the first experiment
Confirmed specificity



Ethical standards compliant
Animal-free production

Anti-Langerin antibody [EPR15863] (ab192027)

Please note: All products are "FOR RESEARCH USE ONLY. NOT FOR USE IN DIAGNOSTIC PROCEDURES"

Our Abpromise to you: Quality guaranteed and expert technical support

- Replacement or refund for products not performing as stated on the datasheet
- Valid for 12 months from date of delivery
- Response to your inquiry within 24 hours
- We provide support in Chinese, English, French, German, Japanese and Spanish
- Extensive multi-media technical resources to help you
- We investigate all quality concerns to ensure our products perform to the highest standards

If the product does not perform as described on this datasheet, we will offer a refund or replacement. For full details of the Abpromise, please visit <https://www.abcam.co.jp/abpromise> or contact our technical team.

Terms and conditions

- Guarantee only valid for products bought direct from Abcam or one of our authorized distributors